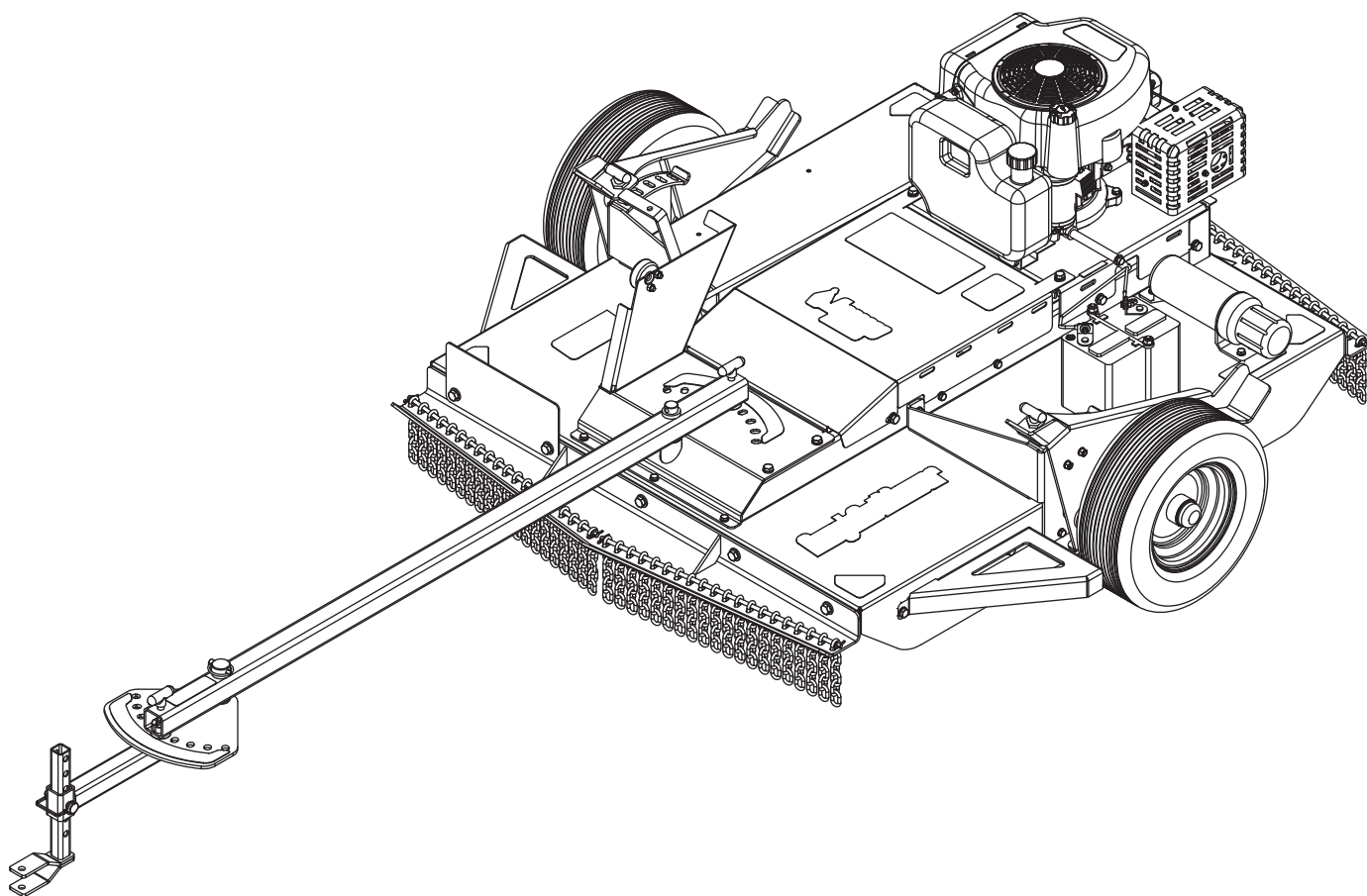




Operator's Manual  
**Rough Cut Mower**

SN



Includes model:

RC4420

RC4422

RC4432

Get parts online at  
**[www.acreageimplements.com](http://www.acreageimplements.com)**



P/N: 24189  
ECN: 11058  
REV1: 02/22/2015  
© 2016 Ardisam, Inc.  
All Rights Reserved

## INTRODUCTION

Congratulations on your investment in quality. Thank you for purchasing an Acreage™ Rough Cut Mower. We have worked to ensure that the mower meets the highest standards for usability and durability. With proper care, your Rough Cut Mower will provide many years of service.

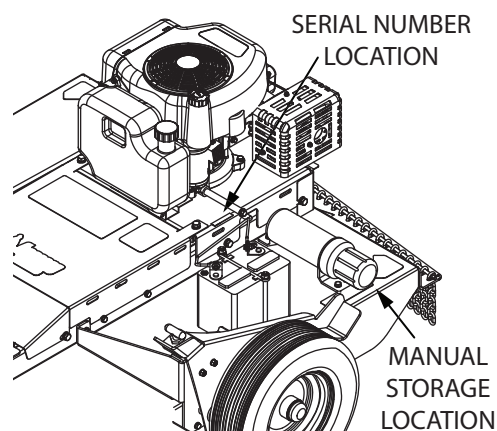
**NOTE:** Please read this entire manual before installation and use. Acreage™ reserves the right to change, alter or improve the product and this document at any time without prior notice.

## CONTENTS

Registration .....	2
Warnings and Safety Precautions.....	3-6
Features .....	7-8
Assembly .....	9-10
Operation .....	10-12
Maintenance, Service and Storage .....	13-17
Servicing and Adjustment .....	13
Maintenance .....	14
Storage .....	15
Troubleshooting .....	16
Slope Guide .....	17
Illustrated Parts Breakdown.....	18-26
Warranty .....	27

## REGISTRATION, SERVICE AND MAINTENANCE LOG

Record the model number and serial number (**SEE FIGURE 1**) in the space provided for easy reference. Warranty is valid only if the completed registration is received by Acreage™ within 30 days of purchase. You can register your warranty online by visiting [www.acreageimplements.com](http://www.acreageimplements.com). If you do not have a computer, call our customer service department at (800) 345-6007 Mondays through Fridays from 8 a.m. to 5 p.m. CST.



**FIGURE 1:** Serial Number & Manual Location

OWNERSHIP RECORDS		
Owner's Name:		
Owner's Address:		
City:	State/Province:	Zip Code/Postal Code:
Model Number:	Serial Number:	
Date of Purchase:		
Notes:		

This instruction book contains information for the RC4420 Rough Cut Mower. Read and keep this book for future reference. This book contains important information on SAFETY, ASSEMBLY, OPERATION, AND MAINTENANCE. The owner must be certain that all the product information is included with the unit. This information includes the INSTRUCTION BOOKS, the REPLACEMENT PARTS and the WARRANTIES. This information must be included to make sure state laws and other laws are followed. We reserve the right to Change, Modify, Discontinue, or Improve this product without notice or obligation to the purchaser. This manual was written to the descriptions and specifications current at time of printing.

## WARNINGS AND SAFETY PRECAUTIONS

### Owner's Responsibility

Accurate assembly and safe and effective use of the mower is the owner's responsibility.

- Read and follow all safety instructions.
- Carefully follow all assembly instructions.
- Maintain the machine according to directions and schedule included in this Acreage™ operator's manual.
- Ensure that anyone who uses the mower is familiar with this manual, all controls and safety precautions.
- Ensure this manual is stored with the machine and all operators are aware of its location. **SEE FIGURE 1**

### Special Messages

Your manual contains special messages to bring attention to potential safety concerns, machine damage as well as helpful operating and servicing information. Please read all the information carefully to avoid injury and machine damage.

**NOTE:** *General information is given throughout the manual that may help the operator in the operation or service of the machine.*

### Important Safety Precautions

**Please read this section carefully.** Operate the mower according to the safety instructions and recommendations outlined here and inserted throughout the text. Anyone who uses this mower must read the instructions and be familiar with the controls.



**THIS SYMBOL POINTS OUT IMPORTANT SAFETY INSTRUCTIONS WHICH IF NOT FOLLOWED COULD ENDANGER YOUR PERSONAL SAFETY. READ AND FOLLOW ALL INSTRUCTIONS IN THIS MANUAL BEFORE ATTEMPTING TO OPERATE THIS EQUIPMENT.**

- Do not allow children to operate this mower. Keep small children away from the area being mowed. Do not allow adults to operate the mower without proper instruction.



### WARNING

**WARNING INDICATES A HAZARD WHICH, IF NOT AVOIDED, COULD RESULT IN DEATH OR SERIOUS INJURY AND/OR PROPERTY DAMAGE.**



### CAUTION

**CAUTION INDICATES YOUR EQUIPMENT CAN BE DAMAGED IF THE SAFETY INSTRUCTIONS THAT FOLLOW THIS SIGNAL WORD ARE NOT OBEYED.**



### IMPORTANT

**INDICATES HELPFUL INFORMATION FOR PROPER ASSEMBLY, OPERATION, OR MAINTENANCE OF YOUR EQUIPMENT.**



### WARNING

#### CALIFORNIA PROPOSITION 65 WARNING

**ENGINE EXHAUST FROM THIS PRODUCT CONTAINS CHEMICALS KNOWN TO THE STATE OF CALIFORNIA TO CAUSE CANCER, BIRTH DEFECTS, OR OTHER REPRODUCTIVE HARM.**



### WARNING

**YOU MUST READ, UNDERSTAND AND COMPLY WITH ALL SAFETY AND OPERATING INSTRUCTIONS IN THIS MANUAL BEFORE ATTEMPTING TO SETUP AND OPERATE YOUR MACHINE.**

**FAILURE TO COMPLY WITH ALL SAFETY AND OPERATING INSTRUCTIONS CAN RESULT IN LOSS OF MACHINE CONTROL, SERIOUS PERSONAL INJURY TO YOU AND/OR BYSTANDERS, AND RISK OF EQUIPMENT AND PROPERTY DAMAGE. THE TRIANGLE IN THE TEXT SIGNIFIES IMPORTANT CAUTIONS OR WARNINGS WHICH MUST BE FOLLOWED.**

### GENERAL Safety Rules

- Read, understand, and follow all instructions on the machine and in the manual(s). Be thoroughly familiar with the controls and the proper use of the mower before starting.
- Familiarize yourself with all of the safety and operating decals on this equipment and on any of its attachments or accessories.
- Do not put hands or feet near or under rotating parts.
- Only allow responsible individuals, who are familiar with the instructions, to operate the mower.
- Thoroughly inspect the area where the machine is to be used and remove all foreign objects. Your equipment can propel small objects at high speed causing personal injury or property damage. Stay away from breakable objects, such as house windows, automobile, greenhouses, etc.
- Keep the area of operation clear of all persons, particularly small children, and pets.

- Wear appropriate clothing such as a long-sleeved shirt or jacket. Also wear long trousers or slacks. Do not wear shorts.
- Do not wear loose clothing or jewelry. They can get caught in moving parts.
- Always wear safety goggles or safety glasses with side shields when operating mower to protect your eyes from foreign objects which can be thrown from the unit.
- Always wear work gloves and sturdy footwear. Wear footwear that will improve footing on slippery surfaces. Leather work shoes or short boots work well for most people. These will protect the operator's ankles and shins from small sticks, splinters, and other debris.
- It is advisable to wear protective headgear to prevent the possibility of being struck by small flying particles, or being struck by low hanging branches, twigs, or other objects which may be unnoticed by the operator.
- Do not operate the mower without proper guards or other safety protective devices in place.
- Use this equipment for its intended purpose only.
- See manufacturer's instructions for proper operation and installation of accessories. Only use accessories approved by the manufacturer.
- Operate only in daylight or good artificial light.
- Do not operate product when fatigued or under the influence of alcohol, drugs or other medication which can cause drowsiness or affect your ability to operate this machine safely.
- Never operate mower in wet grass. Always be sure of your vehicle's traction; keep a steady pace and do not exceed the recommended maximum speed in this manual.
- Before each use, inspect the throttle control lever and cable. Make sure that the cable is free and not damaged. Also check the cable linkage running to the carburetor for kinks, loose fittings, and obstructions. Verify that the control lever is working properly.
- Stop the rotating mower head when crossing gravel drives, walks, or roads. Wait for the cutting blades to stop rotating.
- Watch for traffic when operating near, or when crossing roads.
- Stop the engine (motor) whenever you leave the equipment, before cleaning, repairing or inspecting the unit, be sure the mower and all moving parts have stopped. Let the engine cool, disconnect the spark plug wire, move it away from the spark plug and remove the ignition key.
- If the equipment should start to vibrate abnormally, stop the engine (motor), disconnect the spark plug wire, prevent it from touching the spark plug and remove the ignition key. Check immediately for cause. Vibration is generally a warning of trouble.
- After striking a foreign object, stop the engine (motor). Remove the wire from the spark plug and remove the ignition key. Inspect the mower for damage. If damaged, repair before starting and operating the mower.
- Never leave the mower unattended when the engine is running. Remove the wire from the spark plug and remove the ignition key.
- Regularly inspect the mower. Make sure parts are not bent, damaged or loose.
- Allow muffler and engine areas to cool before touching.
- Never operate or have engine running without having mower attached to suitable tow vehicle.
- Prolonged exposure to noise and vibration from gasoline engine powered equipment should be avoided. Take intermittent breaks and/or wear ear protection from engine noise.
- Check local regulations for age restrictions on use of this machine.
- If the noise or vibrations of the machine increase, stop immediately and perform an inspection.
- The fuel used in this machine is considered extremely flammable and should be handled with care. When storing extra fuel be sure that it is in an appropriate container and away from any fire hazards.

### Slope Operation

Slopes are a major factor related to slip-and-fall or roll-over accidents which can result in severe injury. All slopes require extra caution. If you feel uneasy on a slope, do not mow it. Do mow up and down; never across the face of slopes. Do not mow excessively steep slopes (maximum 20 degrees) or areas where the ground is very rough. See the "Slope Guide" in the back of this manual to check a slope. Exercise extreme caution when changing direction on slopes.

Remove objects such as rocks, tree limbs, etc.

Watch for holes, ruts, or bumps. Tall grass can hide obstacles.

### IMPORTANT NOTES:

***Do not mow near drop-offs, ditches, or embankments. The towing vehicle could lose traction or balance.***

***Do not mow excessively steep slopes.***

***Do not mow on wet grass. Reduced traction could cause slipping or roll-over. Wet piles of grass can also cause fire due to spontaneous combustion.***

## Children

Tragic accidents can occur if the operator is not alert to the presence of children. Children are often attracted to the mower and the mowing activity. Never assume that children will remain where you last saw them.

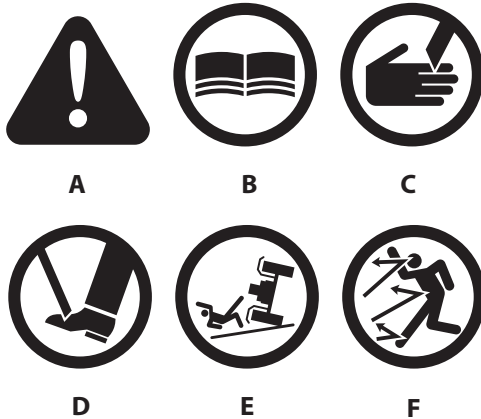
- Keep children out of the mowing area and under the watchful care of a responsible adult that is not performing mower operation.
- Be alert and turn mower off if children enter the area.
- Before and while moving backwards, look behind and down for small children.
- Never allow children to operate the mower or be a passenger on the tow vehicle.
- Use extra care when approaching blind corners, shrubs, trees, or other objects that may obscure vision.

## Service

- Use extra care in handling gasoline and other fuels. They are flammable and vapors are explosive.
- Use only an approved container.
- Never remove gas cap or add fuel with the engine running. Allow engine to cool before refueling. Do not smoke while refueling.
- Fill fuel tank outdoors with extreme care. Never fill fuel tank indoors or near appliances with pilot lights, heaters, or other ignition sources. Replace fuel cap securely. If fuel is spilled, do not start the engine but move product and fuel container from area. Clean up spilled fuel and allow to evaporate.
- Never store the machine or fuel container inside where there is an open flame (such as a water heater), or other ignition source.
- If the fuel has to be drained, this should be done outdoors. The drained fuel should be stored in a container specifically designed for fuel storage or it should be disposed of carefully and according to local regulations.
- Engines give off carbon monoxide, an odorless, colorless, poison gas. Breathing carbon monoxide can cause nausea, fainting or death. Always start and run engine outdoors. Do not start or run engine in an enclosed area, even if doors or windows are open.
- Never make adjustments or repairs with the engine (motor) running. Disconnect the spark plug wire, keep the wire away from the plug to prevent accidental starting, and remove the ignition key. Always wear eye protection when you make adjustments or repairs.
- Check the mower head and engine mounting bolts at frequent intervals for proper tightness.
- Keep all nuts and bolts tight and keep equipment in good condition. Check mounting hardware on mower prior to each use.
- Never tamper with safety devices. Check their proper operation regularly.
- When servicing or repairing the mower, do not tip the machine over or up unless specifically instructed to do so in this manual. Service and repair procedures can be done with the mower in an upright position. Some procedures will be easier if the machine is lifted on a raised platform or working surface.
- To reduce fire hazard, keep mower free of grass, leaves, or other debris build-up. Clean up oil or fuel spillage. Allow mower to cool before storing.
- Stop and inspect the equipment if you strike an object. Repair, if necessary, before restarting.
- Always disconnect spark plug wire and remove the ignition key before cleaning, repairing, or adjusting.
- Do not change the engine governor setting or over-speed the engine.
- Clean and replace safety and instruction decals as necessary.
- To guard against engine over-heating, always have engine debris filter mounted and clean.
- Inspect cooling fins on engine.
- Inspect mower before storage. When not in use, disconnect spark plug lead, remove ignition key and store indoors in a dry place locked or otherwise inaccessible to children.
- Use only original equipment or authorized replacement parts.
- Always follow the manufacturers instructions on operation of the tow vehicle.

## SAFETY DECALS AND WARNINGS

Pictured below are safety and hazard symbols on the unit or in this manual. Before you operate your unit, learn and understand the purpose for each symbol.



### Hazard Symbols and Meanings

- A: Warning!
- B: Read Owner's Manual Before Operating Machine
- C: Keep Hands Clear, Contact Can Injure
- D: Keep Feet Clear, Contact Can Injure
- E: Go Up And Down Slopes, Not Across Slopes Sideways
- F: Remove Objects That Could Be Thrown By The Blade

Should any of the safety labels become unreadable because of being worn, faded, or otherwise damaged during the use of your mower, please use the part number information provided to order a replacement label.



Part Number: 21430  
Decal Mower Warnings



Part Number: 21429  
Decal Danger Keep Hands And Feet Away



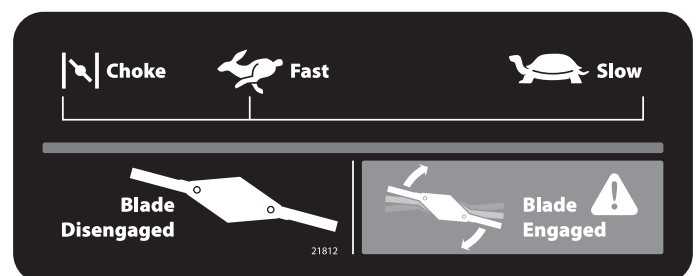
Part Number: 21432  
Decal Caution Do Not Exceed 5 MPH



Part Number: 21433  
Decal Danger Spinning Blades

## CONTROL AND OPERATING SYMBOLS

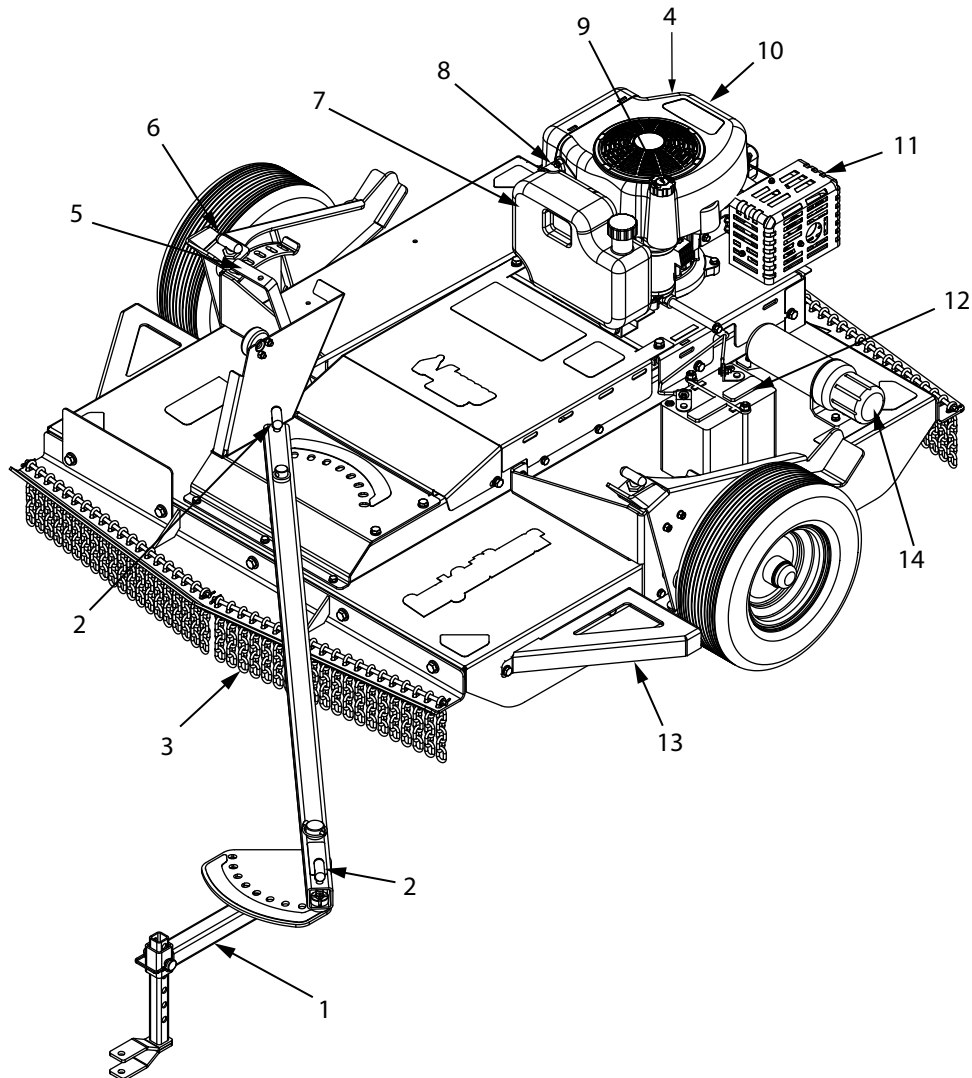
Pictured below are control and operating symbols on the unit or in this manual. Before you operate your unit, learn and understand the purpose for each symbol.



Part Number: 21812  
Decal Throttle And Blade Control

## FEATURES

Read this owner's manual and safety rules before operating your mower. Take time to compare the following illustration with the mower to familiarize yourself with the product and its controls. **SEE FIGURE 2**

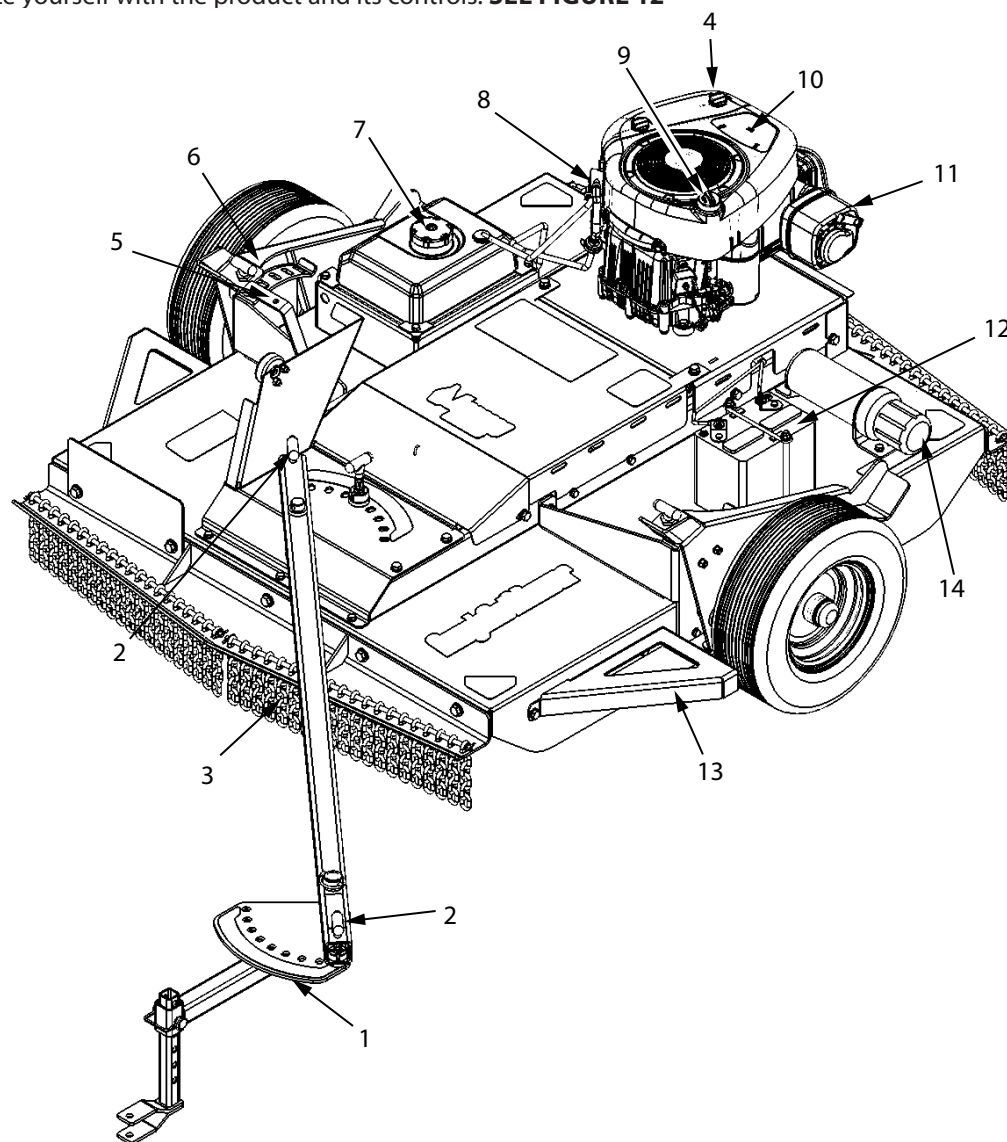


**FIGURE 2:** RC4422 Rough Cut Mower Features

KEY	FEATURE	KEY	FEATURE
1	TOOL-LESS ADJUSTABLE TANDEM TOW-BAR (9 TOWING POSITIONS)	8	FUEL PUMP
2	TOW-BAR LOCKING PIN	9	OIL FILL PORT
3	FRONT AND REAR CHAIN GUARDS	10	340CC ELECTRIC START VIPER ENGINE
4	KEY START IGNITION	11	EXHAUST MUFFLER
5	BLADE CONTROL LEVER	12	BATTERY
6	TOOL-LESS STEP-AND-DROP WHEEL ADJUSTERS (5 POSITIONS)	13	WHEEL BRUSH GUARD
7	1.06 GALLON FUEL TANK	14	MANUAL CANISTER

## FEATURES

Read this owner's manual and safety rules before operating your mower. Take time to compare the following illustration with the mower to familiarize yourself with the product and its controls. **SEE FIGURE 12**



**FIGURE 12:** RC4432 Rough Cut Mower Features

KEY	FEATURE	KEY	FEATURE
1	TOOL-LESS ADJUSTABLE TANDEM TOW-BAR (9 TOWING POSITIONS)	8	FUEL PUMP
2	TOW-BAR LOCKING PIN	9	OIL FILL PORT
3	FRONT AND REAR CHAIN GUARDS	10	500CC ELECTRIC START BRIGGS & STRATTON ENGINE
4	KEY START IGNITION	11	EXHAUST MUFFLER
5	BLADE CONTROL LEVER	12	BATTERY
6	TOOL-LESS STEP-AND-DROP WHEEL ADJUSTERS (5 POSITIONS)	13	WHEEL BRUSH GUARD
7	1.72 GALLON FUEL TANK	14	MANUAL CANISTER

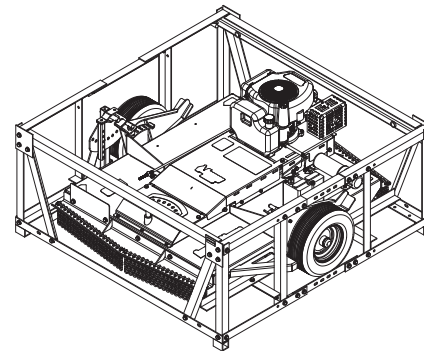
## ⚠ WARNING

**USE THE CORRECT PERSONAL PROTECTION. WEAR SAFETY GLASSES OR FACE SHIELDS WHILE ASSEMBLING OR OPERATING THE MOWER.**

**BE CAREFUL OF SHARP EDGES. THE CUTTER BLADE ASSEMBLY CAN ROTATE AS THE DECK IS MANEUVERED. WEAR GLOVES WHEN HANDLING THE MOWER DECK AND CUTTER BLADES.**

**REMOVE SPARK PLUG WIRE FROM SPARK PLUG AND KEY FROM IGNITION BEFORE DOING ANY ASSEMBLY OR MAINTENANCE TO THE MOWER.**

**TWO MAN LIFT REQUIRED. THE RC4420 MOWER WEIGHS 525 LBS. DO NOT TRY TO LIFT ALONE.**



**FIGURE 3:** *Your New Mower As It Is Shipped To You*

## ⚠ WARNING

**USE THE CORRECT PERSONAL PROTECTION. GASOLINE AND ENGINE OIL ARE HAZARDOUS TO YOUR HEALTH.**

**ALWAYS USE A SAFETY APPROVED GASOLINE CONTAINER.**

**DO NOT SMOKE WHEN ADDING GASOLINE TO THE ENGINE.**

**DO NOT FILL WITH GASOLINE WHEN INSIDE AN ENCLOSURE. ALWAYS MOVE OUTDOORS WHERE FUEL VAPORS WILL NOT COLLECT.**

**THE ENGINE AND MUFFLER CAN BE VERY HOT AND CAUSE BURNS. BEFORE YOU ADD GASOLINE, STOP THE ENGINE. LET THE ENGINE COOL FOR SEVERAL MINUTES.**

### Engine Preparation

See the engine manufacturer's instructions for the type of gasoline and oil to use. Before you use the unit, read the information on safety, operation, maintenance, and storage.

### Fill Crankcase With Oil

See page 12 of this manual for oil fill instructions.

### Fill Fuel Tank With Gasoline

See the engine manufacturer's instructions for the type of gasoline to use.

### Battery Preparation

The Rough Cut Mower is supplied with a 12 volt, maintenance free lead acid battery. When the battery is properly maintained and charged, it will provide years of dependable service.

1. The Rough Cut Mower is shipped with the negative battery terminal disconnected. This is to prevent battery discharge while in shipping. If necessary, connect the terminal and charge the battery.

## ASSEMBLY

### Tools Required:

- Wrenches
- Tire Pressure Gauge
- Sidecutter or Industrial Scissors
- Safety Goggles and Gloves
- ATV/UTV

### Remove the Mower from the Shipping Crate:

1. Remove any loose parts or packaging, from the crate.  
**SEE FIGURE 3**
2. Remove the bolts securing the sections of the container together, cut all zip ties and disassemble shipping crate.
3. Raise the cutter deck to its highest height position (*see cutter height adjustment on Page 10*) to clear the crate. The mower can now be rolled off the shipping crate.
4. Remove any additional packaging material and inspect the mower.
5. Assemble the adjustable tandem tow draw bar to the mower using included hardware.

**NOTE:** *Refer to the Illustrated Parts Breakdown for part identification and location.*

## ⚠ CAUTION

**ENGINE DOES NOT CONTAIN OIL OR GASOLINE WHEN SHIPPED FROM THE FACTORY. YOU MUST SERVICE THE ENGINE BEFORE OPERATION.**

**FOLLOW THE ENGINE MANUFACTURER'S INSTRUCTIONS FOR THE TYPE OF GASOLINE AND OIL TO USE.**

 **WARNING**

USE THE CORRECT PERSONAL PROTECTION. BATTERY CONTAINS SULFURIC ACID AND IS CORROSIVE. YOU MUST WEAR SAFETY GOGGLES AND GLOVES WHEN SERVICING THE BATTERY.

DO NOT DROP THE BATTERY. BATTERY IS HEAVY AND CAN CAUSE DAMAGE TO EQUIPMENT OR CAUSE PERSONAL INJURY IF DROPPED.

USE THE CORRECT CHARGER AND ALWAYS INSPECT THE BATTERY AND TERMINALS FOR DAMAGE OR WEAR. REPLACE ANY DAMAGED OR WORN ITEMS.

DO NOT LIFT OR CARRY THE BATTERY BY THE TERMINALS OR CABLES. DO NOT SHORT CIRCUIT THE BATTERY TERMINALS. DAMAGE TO THE BATTERY OR FIRE CAN OCCUR. SERIOUS INJURY OR DEATH CAN RESULT.

**Wheel Preparation**

Use a tire pressure gauge to check the tire pressure. Fill tires to a maximum of 28 psi.

 **WARNING**

MAKE SURE YOU READ AND UNDERSTAND THE OPERATORS MANUAL BEFORE ATTEMPTING TO OPERATE THIS MACHINE. KNOW HOW TO QUICKLY SHUT DOWN THE MOWER AND TOW VEHICLE BEFORE ATTEMPTING TO OPERATE THIS MACHINE.

BE CAREFUL AROUND MOVING PARTS. THE MOWER HEAD WILL CONTINUE TO ROTATE FOR SEVERAL SECONDS AFTER THE ENGINE HAS STOPPED.

DO NOT ATTEMPT TO CRANK OR START THE ENGINE BEFORE IT HAS BEEN PROPERLY SERVICED WITH THE RECOMMENDED OIL. THIS MAY RESULT IN AN ENGINE FAILURE.

DO NOT MODIFY, REMOVE, CUT, BEND, OR WELD THE PARTS OF THE MOWER OR THE SHIELD GUARDS. MODIFICATION OF YOUR MACHINE WILL VOID YOUR WARRANTY AND CAN CAUSE PROPERTY DAMAGE, SERIOUS INJURY AND/OR DEATH.

ALWAYS BE AWARE OF THE MOWER POSITION. THE MOWER CAN BE TOWED AT AN OFF SET AND MAY NOT ALWAYS BE DIRECTLY BEHIND THE TOW VEHICLE.

 **WARNING**

IF DURING OPERATION THE MOWER MAKES UNUSUAL NOISES OR VIBRATIONS, SHUT OFF THE TOW VEHICLE THEN SHUT OFF THE ROUGH CUT MOWER ENGINE. WAIT FOR THE ENGINE AND MOWER PARTS TO COOL. REMOVE THE SPARK PLUG AND KEY FROM IGNITION BEFORE INSPECTING THE MOWER.

INSPECT MOWER FOR LOOSE, WORN, DAMAGED, OR MISSING HARDWARE. REPAIR OR REPLACE ANY DAMAGED PARTS BEFORE OPERATION OF THE MOWER. ALWAYS USE APPROVED REPLACEMENT PARTS AND HARDWARE.

CLEAR ALL OBSTRUCTIONS FROM THE MOWER DECK, AIR FILTER, AND EXHAUST MUFFLER AREAS.

MOWER BLADES ARE SHARP. MAKE SURE YOU WRAP THE BLADES OR USE GLOVES WHEN SERVICING.

DO NOT ALLOW PEOPLE OR PETS TO RIDE ON THE MOWER WHEN RUNNING OR STOPPED.

DISENGAGE THE MOWER BLADES AND USE EXTREME CAUTION WHEN CROSSING DRIVEWAYS, SIDEWALKS, OR ROADWAYS. BE ALERT FOR TRAFFIC AND HIDDEN ROAD HAZARDS.

NEVER LEAVE TOW VEHICLE OR MOWER RUNNING UNATTENDED. MAKE SURE TO SHUT DOWN THE TOW VEHICLE PER MANUFACTURERS INSTRUCTIONS. SET THE PARKING BRAKE AND REMOVE THE KEY. DISENGAGE THE MOWER CUTTING BLADES, SHUT DOWN THE ROUGH CUT MOWER ENGINE AND REMOVE THE KEY.

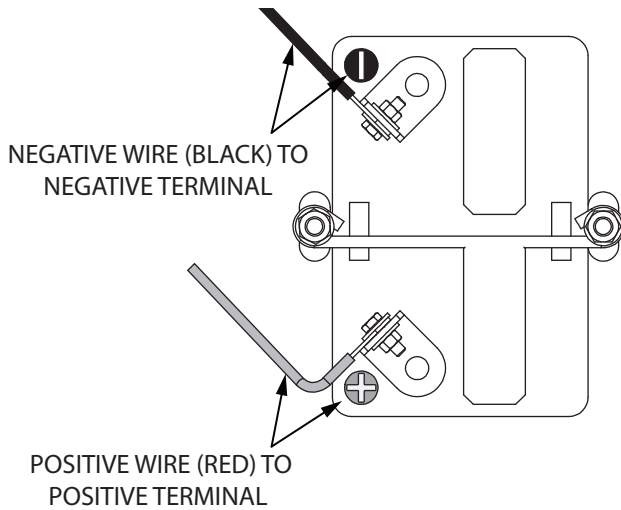
SHUT OFF ENGINE BEFORE ADJUSTING DECK HEIGHT. KEEP HANDS AND FEET FROM UNDER THE DECK. MAKE SURE BLADES ARE STOPPED. THE MOWER IS HEAVY AND COULD CAUSE INJURY.

DO NOT PLACE HANDS OR FEET UNDER DECK OF MOWER WHEN ENGINE IS RUNNING OR BLADES ARE TURNING.

FAILURE TO FOLLOW WARNINGS CAN RESULT IN SERIOUS INJURY OR DEATH.

**OPERATION****How to Start the Mower**

1. Make sure the battery is plugged in and grounded.  
**SEE FIGURE 4**
2. Make sure the blade control lever is in the DISENGAGED position.
3. For cold starts, put the throttle control lever to the CHOKE position.



**FIGURE 4:** Battery Wire Routing.

**NOTE: If starting a warm engine, place the throttle control lever to the run POSITION.**

4. Turn the key switch to the center position RUN position and then to the START position for no more than 5 seconds. Repeat up to 3 times until the engine starts. (If engine fails to start after 3 attempts, refer to Trouble Shooting Guide). When the engine starts, release the key to the RUN position.
5. Slowly adjust the throttle to the RUN position as the engine warms up. For best performance, operate the engine with the throttle in the RUN position.

#### How to Stop the Mower

1. Push the blade control lever to the DISENGAGED position.
2. Move the throttle control to the IDLE position.
3. Turn the key to the STOP position. Always remove the key for safety.

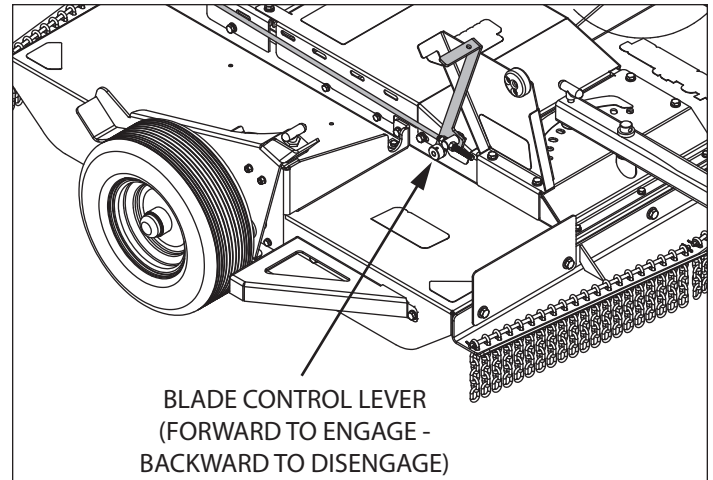
**NOTE: Do not use the CHOKE position to stop the engine. Engine back fire can occur and can cause engine damage.**

#### Engage/Disengage the Cutter Blades

1. Engage the cutter blades by pulling the blade control lever towards the front of the mower. **SEE FIGURE 5**
2. Disengage the cutter blades by pushing the blade control lever towards the rear of the mower.

#### Cutter Deck Height Adjustment

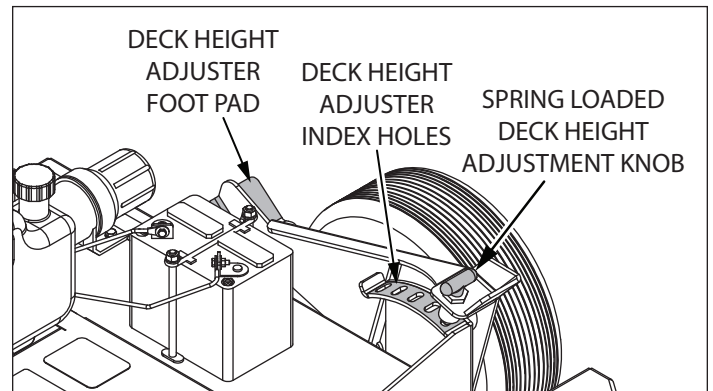
1. To adjust the cutting height:
  - a. Apply foot pressure to the deck height adjuster foot pad. **SEE FIGURE 6**
  - b. While holding foot pressure on the foot pad, lift the spring loaded deck height adjustment knob to disengage and allow movement of the deck height adjuster.



**FIGURE 5:** Cutter Blade Control Lever.

- c. Apply or release foot pressure on the deck height adjuster foot pad to align the index holes on the top deck height adjuster to achieve the desired height.
  - d. Release the spring loaded deck height adjustment knob into the appropriate hole to secure the mower deck at the required height.
2. Repeat Steps 1 a. - d. to adjust the other side.

**NOTE: Make sure the left and right sides of the mower deck height adjustment is the same on both sides. Cutting height is between 3.5 to 7.5 inches.**



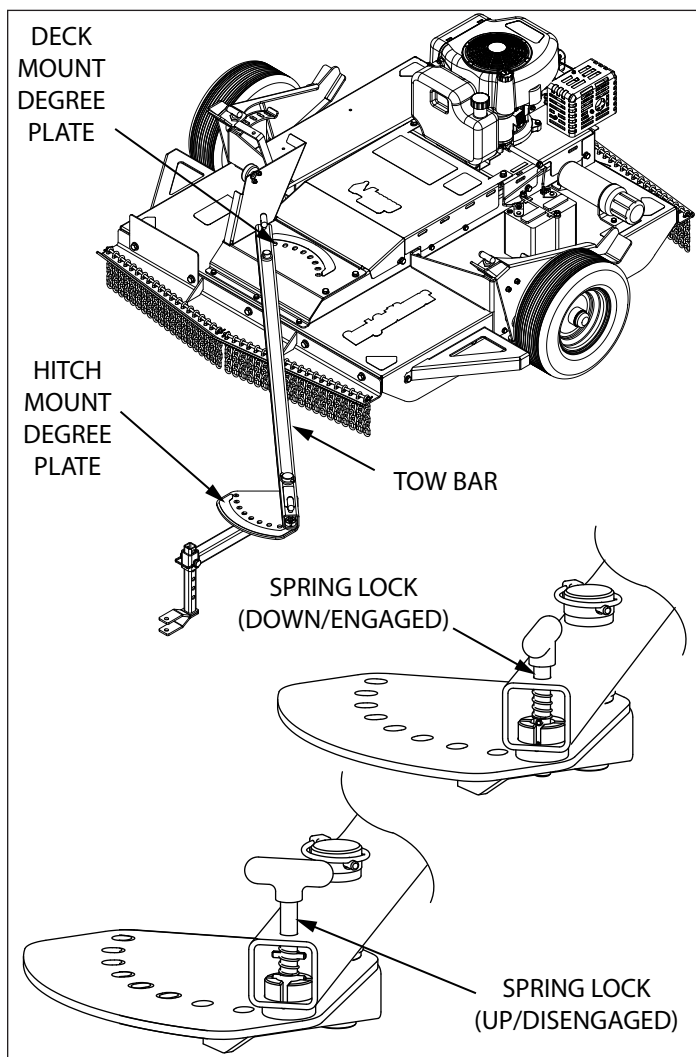
**FIGURE 6:** Cutter Deck Height Adjustment.

#### Tow Bar Offset Adjustment

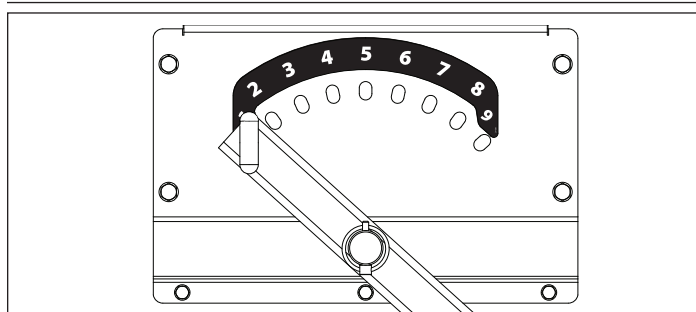
1. Offset the tow bar deck mount degree plate and tow bar hitch degree plates as follows:
  - a. Lift the spring loaded tow bar locking pin knob and turn 90 degrees to lock in the up/disengaged position. **SEE FIGURE 7**
  - b. Position the tow bar at the desired numbered offset hole on the deck mount degree plate. **SEE FIGURE 8 AND TABLE 1**

- c. Lift the spring loaded tow bar locking pin knob and turn 90 degrees to lock in the down/engaged position. Make sure the pin engages completely.
2. Repeat Steps 1 a. - c. to adjust the hitch degree plate.

**NOTE:** Make sure both the hitch and deck mount degree plates are indexed into the same numbered hole.



**FIGURE 7:** Tow Bar Offset Adjustment



**FIGURE 8:** Tow Bar Offset Position Guide



## WARNING

**DO NOT LEAVE MOWER UNATTENDED WHILE ENGINE OR TOW VEHICLE IS RUNNING. SET THE TOW VEHICLE PARKING BRAKE, SHUT OFF THE TOW VEHICLE. DISENGAGE THE MOWER CUTTING BLADES, SHUT OFF THE ROUGH CUT MOWER ENGINE. WAIT FOR THE MOWER BLADES TO STOP ROTATING.**

**NEVER RUN THE ENGINE INDOORS OR IN A POORLY VENTILATED AREA. ENGINE EXHAUST CONTAINS CARBON MONOXIDE, AN ODORLESS AND DEADLY GAS.**

**KEEP HANDS, FEET, HAIR AND LOOSE CLOTHING AWAY FROM THE MOWER AND ANY MOVING PARTS ON THE ENGINE.**

**DO NOT TOUCH THE MUFFLER OR SURROUNDING AREAS. TEMPERATURES MAY EXCEED 150 DEGREES FAHRENHEIT.**

**DEBRIS SUCH AS STICKS, GRAVEL OR ROCKS CAN BE THROWN WITH SUFFICIENT FORCE TO CAUSE PERSONAL INJURY OR PROPERTY DAMAGE.**

**CHECK THE TOW VEHICLE OWNERS MANUAL TO DETERMINE THE TOWING CAPACITY ON SLOPES AND HILLS. USE EXTREME CAUTION WHEN OPERATING THE MOWER HILLY, UNEVEN, OR WET TERRAIN. MAKE SURE YOU FOLLOW RECOMMENDATIONS SO YOU DO NOT TIP THE MOWER OVER.**

**NEVER USE THE MOWER ON SLOPES GREATER THAN 20 DEGREES.**

**FOR BETTER CONTROL ON SLOPES, MOW UP AND DOWN AND NEVER ACROSS THE SLOPE.**

**TABLE 1. TOW BAR OFFSET GUIDE**

Position	Offset (in)
1	27.5 LEFT
2	20.0 LEFT
3	11.5 LEFT
4	10.0 LEFT
5	0.00
6	10.0 RIGHT
7	11.5 RIGHT
8	20.0 RIGHT
9	27.5 RIGHT

### Mower Tips:

- Never operate outside of tow vehicle recommendations.
- If the weeds or grass are tall and thick, operate the mower at a slower towing speed.
- Frequently clean the underside of the mower to remove any grass build up. See the "Maintenance, Service and Storage" section for details.
- Do not mow on excessively steep slopes. Never use the mower on slopes greater than 20 degrees using any type of tow vehicle. Do not mow on slopes when the ground is slippery or wet. Mow up and down the face of the slope, not across.
- Do not operate tow vehicle over 5 mph on flat terrain, or 4 mph on rough terrain while towing the mower.
- When cutting larger wooded sections like small saplings, allow the mower to ride up over the material slowly. Use a slower speed to adjust for various conditions.
- After the first pass of cutting large saplings, mow the section again to clean additional debris. Mow from the trunk towards the top as the brush lays on the ground.
- When cutting heavy brush in off set mowing, keep the offset by 10 inches (Position 4 or Position 6).
- Do not use a commercial or non-commercial automobile, truck, sport utility vehicle (SUV) or motorcycle, as defined by the Wisconsin Department of Motor Vehicles, to tow the Rough Cut Mower. These vehicles make it difficult to see and control the mower. Use of these tow vehicle types will void the warranty.

### Tow Vehicle Recommendations:

Acreage™ recommends a tow vehicle be either two or four wheel drive. Some suitable suggestions are listed below:

- Compact or Sub-compact tractor,
- Utility Vehicle (UTV)
- All-Terrain Vehicle (ATV)
- Lawn/Garden Tractor (17 HP and above and weighing at least 500 lbs.)
- Riding lawn mowers with engines under 17 HP and weighing less than 500 lbs. are not suitable for use on slopes greater than 5 degrees.

**NOTE: Do not operate the tow vehicle out side of the manufacturers recommended operating instructions or conditions.**

**Lawn and garden tractors work best as tow vehicles when the cutting deck is removed.**

## MAINTENANCE, SERVICE, AND STORAGE

### SERVICE AND ADJUSTMENT

#### How to Change Engine Oil

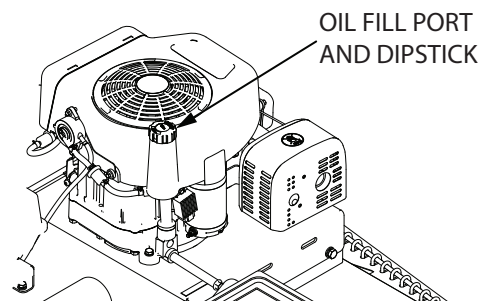
Be sure the engine is not operating and is located on a level surface before checking or refilling oil. Engine should be warm for easy removal of oil.

1. Detach spark plug wire, move away from spark plug and remove key from ignition.
2. Position machine on flat, level surface.
3. Open fill port and prop dipstick. **SEE FIGURE 9**
4. Remove drain plug from extension tube. Use a wrench to hold extension tube during removal of drain plug.
5. Empty oil into a suitable oil container and dispose of oil properly per local regulations.
6. Reinsert drain plug to its original position and fill engine with appropriate oil to the top marking on the dipstick (**SEE FIGURE 10**). **DO NOT OVERFILL.** For proper oil capacity and specification, see the engine manufacturer's instructions.
7. Reinsert dipstick and tighten.

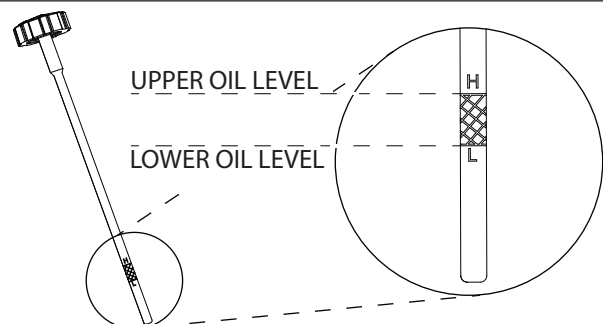


### WARNING

**BEFORE YOU INSPECT, CLEAN OR SERVICE THE MOWER, STOP THE ENGINE. MAKE SURE THAT ALL MOVING PARTS HAVE STOPPED. DISCONNECT THE WIRE FROM THE SPARK PLUG AND REMOVE KEY FROM THE IGNITION.**



**FIGURE 9: Oil Dipstick Location.**



**FIGURE 10: Dipstick And Oil Levels.**

## Maintenance Schedule

**NOTE:** Maintenance, replacement or repair of the emissions control devices and systems may be performed by any non-road engine repair establishment or individuals. However, items must be serviced by an authorized dealer to obtain "no charge" emissions control service. Good maintenance is essential to help reduce air pollution and for safe, economical and trouble-free operation.

Service Records	Before Each Use	Every 25 Hours	As Noted	Service Date
Check Engine Oil Level	x			
Check Mower Blades	x			
Check Tire Pressure	x			
Engine/Machine Cleaning	x		1	
Check Nuts And Bolts	x			
Check Spark Plug		x		
Change Engine Oil		x		
Service Air Filter		x	2	
Lubricate Cutter Head Assembly SEE FIGURE 11		x		

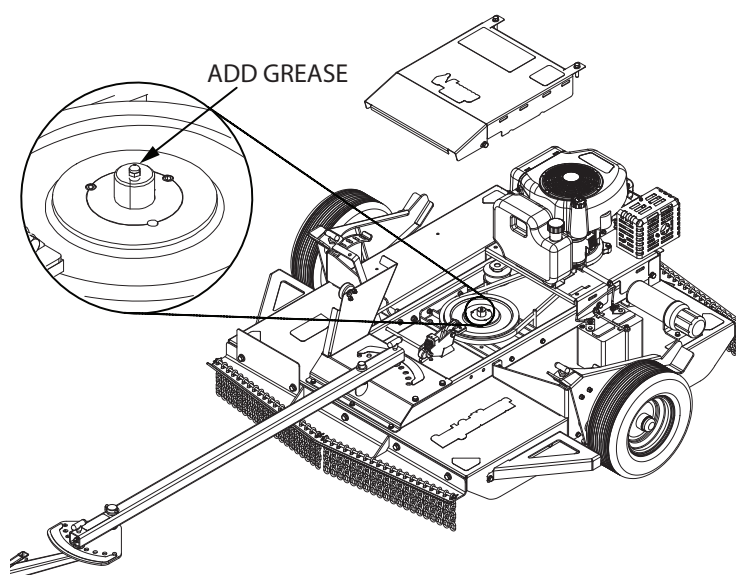
**Note 1 - Clean daily if used in extremely dusty or dirty conditions.**

**Note 2 - Change more often if used in extremely dusty or dirty conditions.**

### General Recommendations

The warranty on this mower does not cover items that have been subjected to operator abuse or negligence. To receive full value from the warranty, the operator must maintain the mower as instructed in this manual.

Some adjustments must be made periodically to properly maintain your mower. All adjustments in the "Service and Adjustments" section of this manual must be checked at least once each season.



**FIGURE 11:** Cutter Head Assembly Lubrication Location

## STORAGE

When the mower is put in storage for thirty days or more, follow the steps below to make sure the mower is in good condition the following season.

### Mower:

#### Completely Clean The Mower

Store the mower in a building that is well-ventilated.

**NOTE: A yearly check-up or tune-up at an authorized service dealer will ensure that the mower will provide maximum performance for the next season.**

### Engine:

#### IMPORTANT NOTE:

***It is important to prevent gum deposits from forming in fuel system parts such as the carburetor, fuel filter, fuel hose, and tank during storage. Also, using alcohol blended fuels (called gasohol, ethanol or methanol) can attract moisture which leads to separation and formation of acids during storage. Acidic gas can damage the fuel system of an engine while in storage.***

1. Drain all gasoline from the fuel tank. Let the engine run until it is out of gasoline. If you do not want to remove gasoline, add a fuel stabilizer to any gasoline left in the tank. A fuel stabilizer will minimize the formation of gum deposits and acids. If the tank is almost empty, mix the fuel stabilizer with fresh gasoline in a separate container and add the mixture to the tank. Always follow the instructions on the stabilizer container. Run the engine at least ten minutes after stabilizer is added to allow the mixture to reach the carburetor.
2. Drain the oil from a warm engine. Fill the engine crankcase with new oil.
3. Remove the spark plug from the cylinder. Pour one ounce of oil into the cylinder. Slowly pull the recoil starter handle so that the oil will protect the cylinder. Install a new spark plug in the cylinder.
4. Completely clean the mower, including dirt and debris from the cylinder cooling fins and the engine housing.
5. Fully charge battery. After complete charge, disconnect negative battery terminal and move away from battery post.
6. When not in use, disconnect spark plug lead, remove key from ignition and store in a well-ventilated area inaccessible to children.



## WARNING

**DO NOT REMOVE GASOLINE WHILE INSIDE A BUILDING, NEAR A FIRE, OR WHILE YOU SMOKE. GASOLINE FUMES CAN CAUSE AN EXPLOSION OR A FIRE.**

## TROUBLESHOOTING & REPAIR

At Acreage™, we build quality and durability into the design of our products; but no amount of careful design by us, and careful maintenance by you, can guarantee a repair-free life for your Rough Cut Mower. Most repairs will be minor, and easily fixed by following the suggestions in the troubleshooting guide in this section.

The guide will help you pinpoint the causes of common problems and identify remedies.

For more complicated repairs, you may want to rely on an authorized service center. A parts breakdown is located toward the end of this manual.

We will always be glad to answer any questions you have, or help you find suitable assistance. To order parts or inquire about warranty, call or email us using the contact information found below.

### Ordering Replacement Parts

Parts can be obtained from the store where the rough cut mower was purchased or direct from the factory. To order parts visit [www.acreageimplements.com](http://www.acreageimplements.com) or call 1-800-345-6007.

For other general questions, you can e-mail us at [info@acreageimplements.com](mailto:info@acreageimplements.com).

Please include the following information with your order:

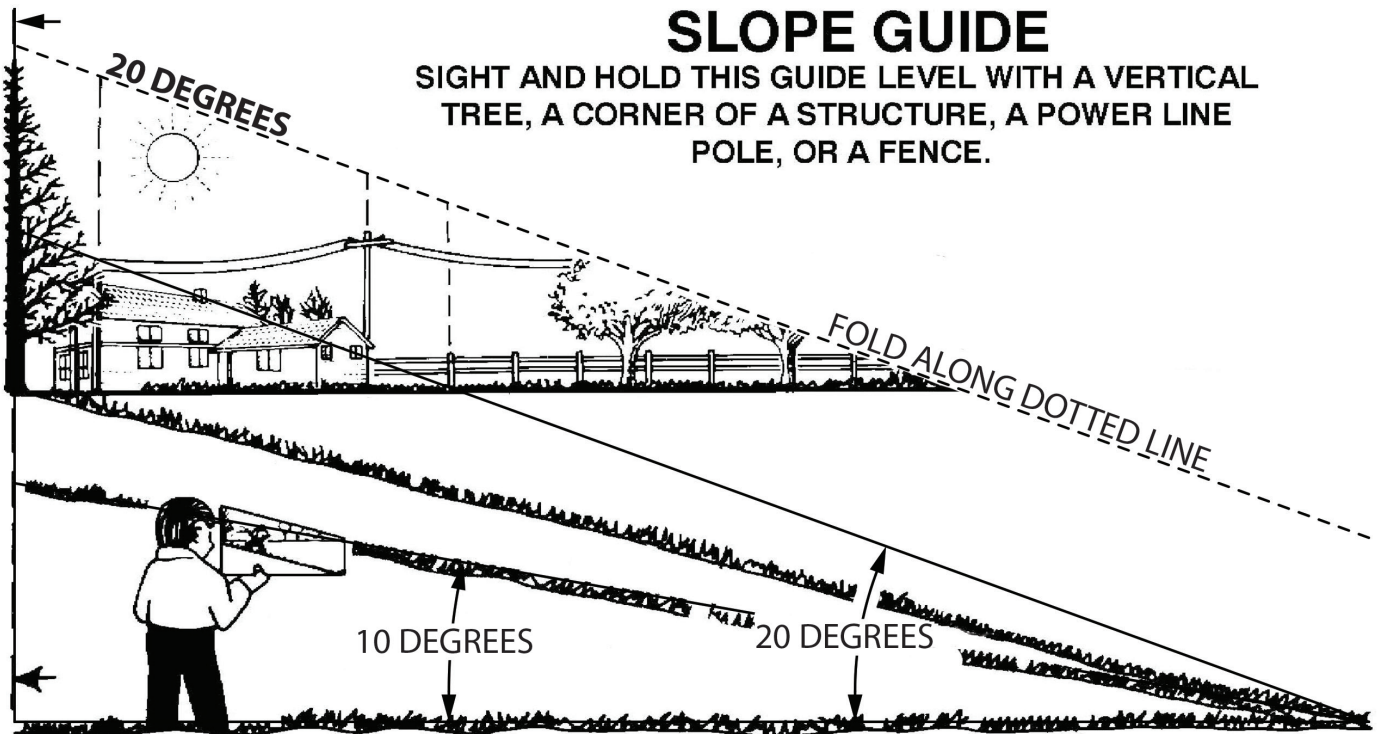
- 1) Part numbers
- 2) Part description
- 3) Quantity
- 4) Model number and serial number

**TROUBLESHOOTING GUIDE**

Trouble	Cause	Correction
Engine does not start	Spark plug wire disconnected	Connect spark plug wire
	Engine not primed	Prime engine
	Defective or incorrectly gapped spark plug	Inspect or replace spark plug
	Fuel tank empty	Add fuel
	Dirty carburetor or fuel line	Clean carburetor or fuel line
	Dirty air filter	Replace air filter
	Carburetor out of adjustment	For carburetor adjustment, take the unit to an authorized service center
	Engine flooded	Wait several minutes before starting
	Throttle control lever in incorrect position	Move throttle lever to <b>FAST</b> or <b>START</b> position
	Stale gasoline	Drain old gasoline and add fresh gas
	Defective throttle control lever or wire	Inspect lever and wire. Replace if damaged or defective
	Defective ignition	Inspect ignition and replace if damaged or defective
	Battery has no charge	Charge and replace if dead, damaged, or defective
Engine runs poorly	Bad spark plug	Replace spark plug
	Dirty air filter	Replace air filter
	Carburetor out of adjustment	For carburetor adjustment, take the unit to an authorized service center
	Stale gasoline	Drain old gasoline and add fresh gas
	Engine cooling system clogged	Clean debris screen and engine cooling fins
Engine overheats	Engine cooling system clogged	Clean debris screen and engine cooling fins
	Carburetor out of adjustment	For carburetor adjustment, take the unit to an authorized service center
	Oil level is low	Add oil
Engine will not stop running	Ignition failed	Inspect and replace damaged parts
	Wire disconnected from ignition	Inspect, repair, or replace damaged parts
Poor Mower performance	Cutter Blades Dull	Sharpen mower cutter blades,
Mower vibrates	Loose nuts or bolts	Check all bolts and nuts, including engine bolts
	Broken mower head	Replace broken part

**NOTE: Please see the engine manual for a full troubleshooting guide for any engine issues.**

## SLOPE GUIDE



Use this guide to determine slope angle.

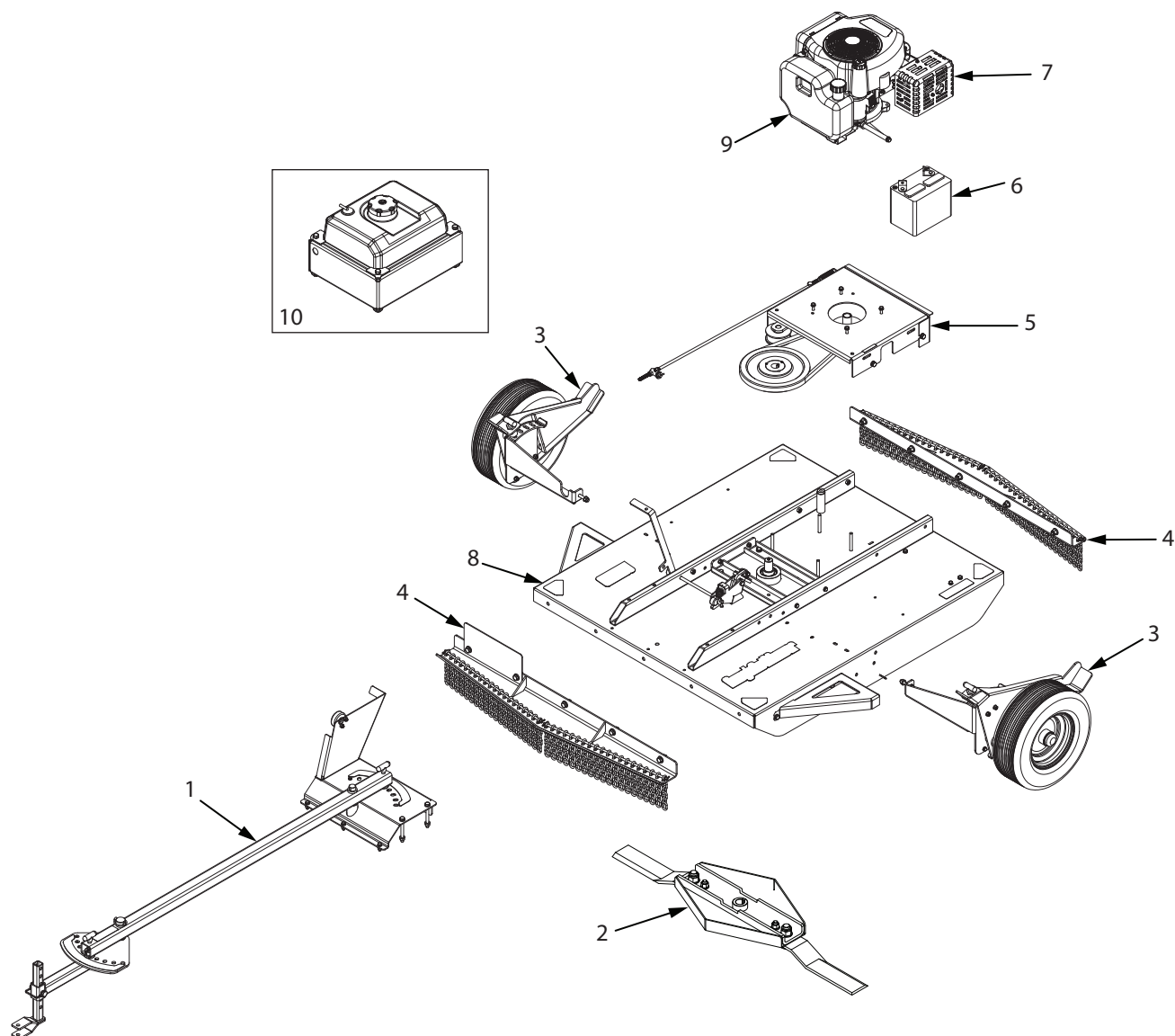
**Do Not mow on a slope greater than 20 degrees.**

- A 10 degree slope is a hill that increases in height at approximately 1.76 feet (53.6 cm) in 10 feet (304.5 cm).
- A 20 degree slope is a hill that increases in height at approximately 3.64 feet (110.9 cm) in 10 feet (304.5 cm).

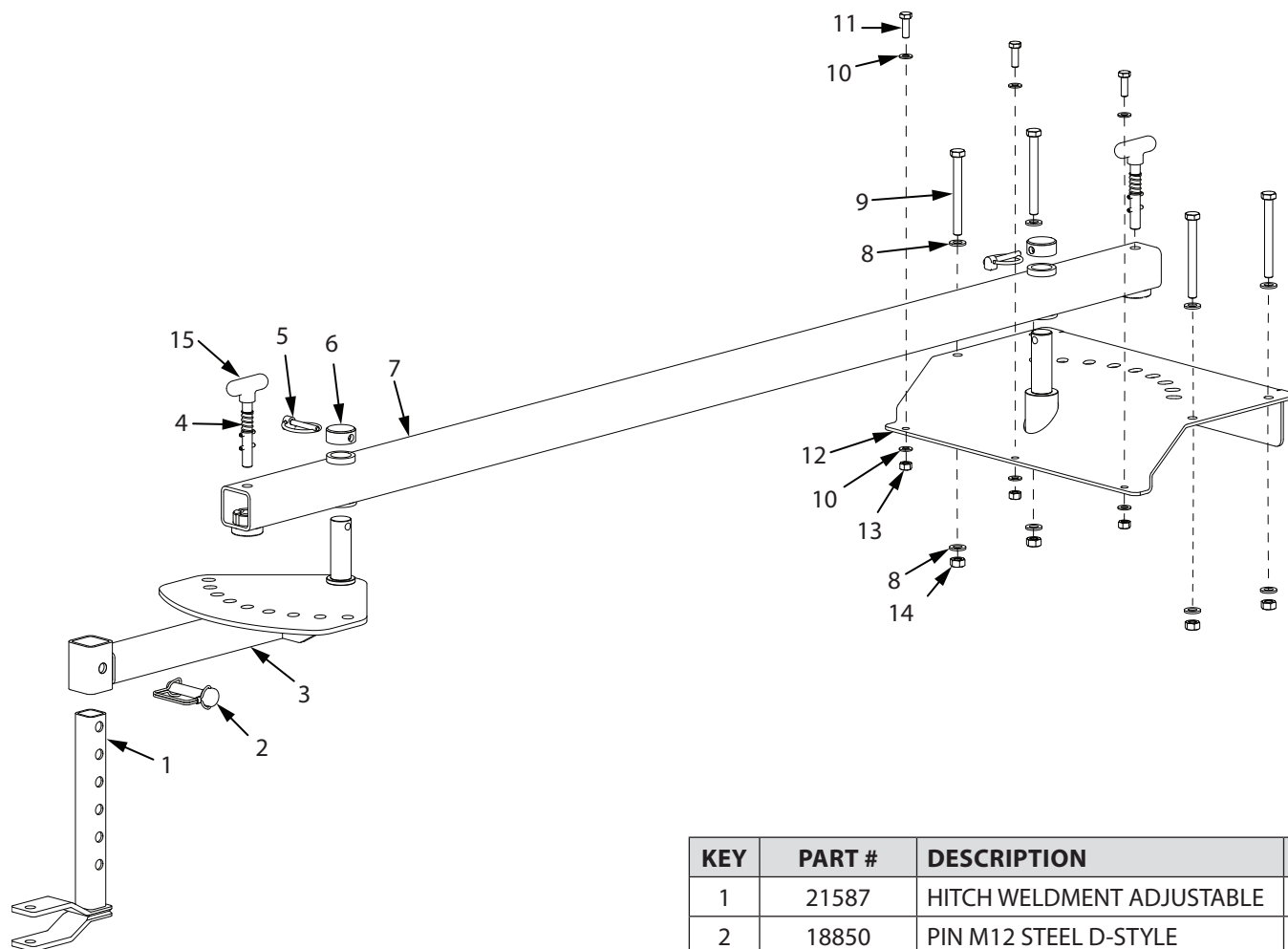


### WARNING

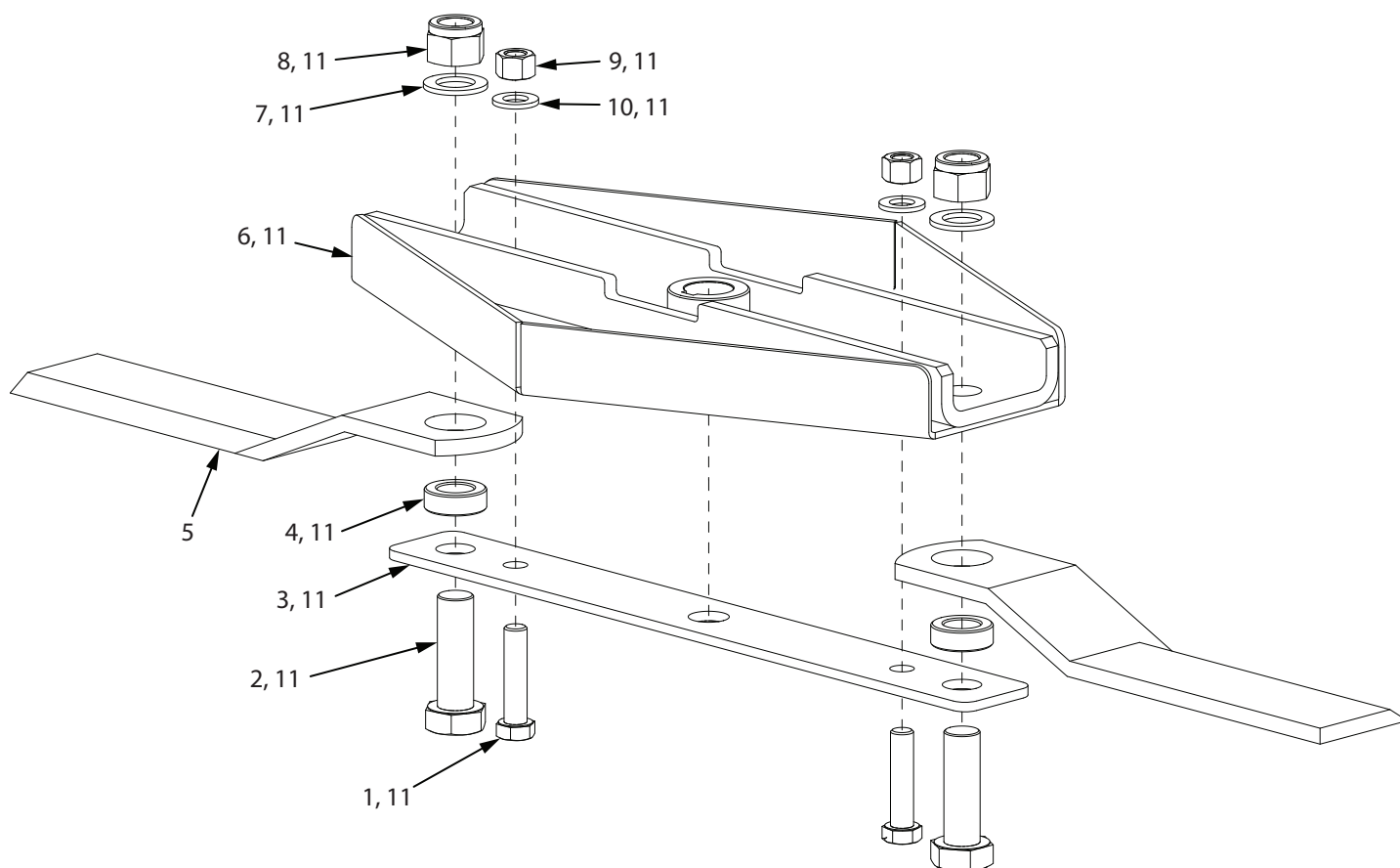
**USE EXTREME CARE AT ALL TIMES AND AVOID SUDDEN TURNS OR MANEUVERS. FOLLOW OTHER INSTRUCTIONS IN THIS MANUAL FOR SAFETY IN MOWING ON SLOPES. OPERATE A MOWER UP AND DOWN SLOPES, NEVER ACROSS SLOPES. USE EXTRA CARE WHEN OPERATING ON OR NEAR SLOPES AND OBSTRUCTIONS.**

**ILLUSTRATED PARTS BREAKDOWN - Rough Cut Mower**


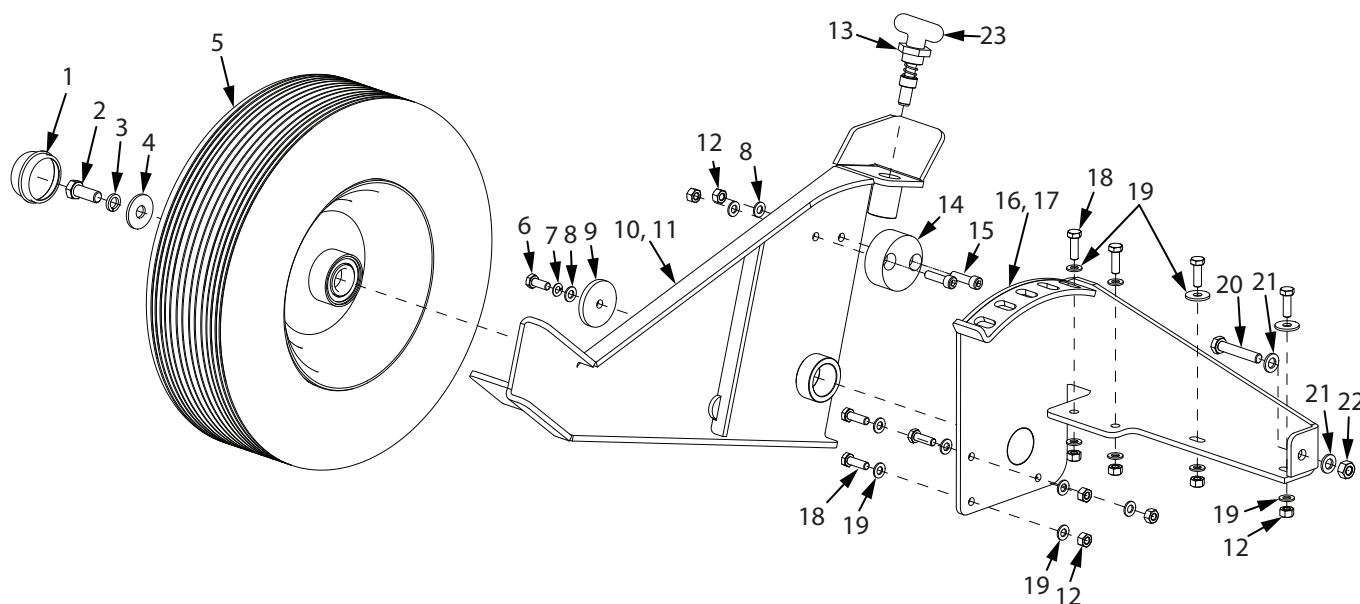
KEY	PART #	DESCRIPTION	QTY.
1	SEE PAGE 18	TOW BAR MOUNT GROUP	1
2	SEE PAGE 19	BLADE MOUNT GROUP	1
3	SEE PAGE 20	WHEEL MOUNTS GROUP	2
4	SEE PAGE 21	BRUSH GUARDS GROUP	2
5	SEE PAGE 22	ENGINE MOUNT GROUP	1
6	21574	BATTERY LEAD ACID 165CCA	1
7	21198	ENGINE 340CC VIPER VERTICAL	1
8	SEE PAGES 24 - 25	MOWER DECK GROUP	1
9	SEE PAGE 25	GAS TANK (RC4422 ONLY)	1
10	SEE PAGE 25	GAS TANK KIT (RC4432 ONLY)	1

**ILLUSTRATED PARTS BREAKDOWN - Tow Bar Mount Group**


KEY	PART #	DESCRIPTION	QTY.
1	21587	HITCH WELDMENT ADJUSTABLE	1
2	18850	PIN M12 STEEL D-STYLE	1
3	21086	DEGREE PLATE WELDMENT	1
4	21813	KIT TONGUE LATCH PIN	2
5	18847	LOCK PIN RING	2
6	21647	CAP SHAFT MOUNT	2
7	21575	TOW BAR WELDMENT	1
8	2431	WASHER M10 X 20 X 2 FLAT	8
9	21642	BOLT M10 X 1.5 X 100 HEX	4
10	400024	WASHER M8 X 16 X 1.6 FLAT	6
11	13826	BOLT M8 X 1.25 X 25 HEX	3
12	21592	DECK MOUNT TOW BAR	1
13	13508	NUT M8 NYLOC	3
14	W1265V0903	NUT M10 NYLOC	4
15	21624	HANDLE PIN	4

**ILLUSTRATED PARTS BREAKDOWN - Blade Mount Group**


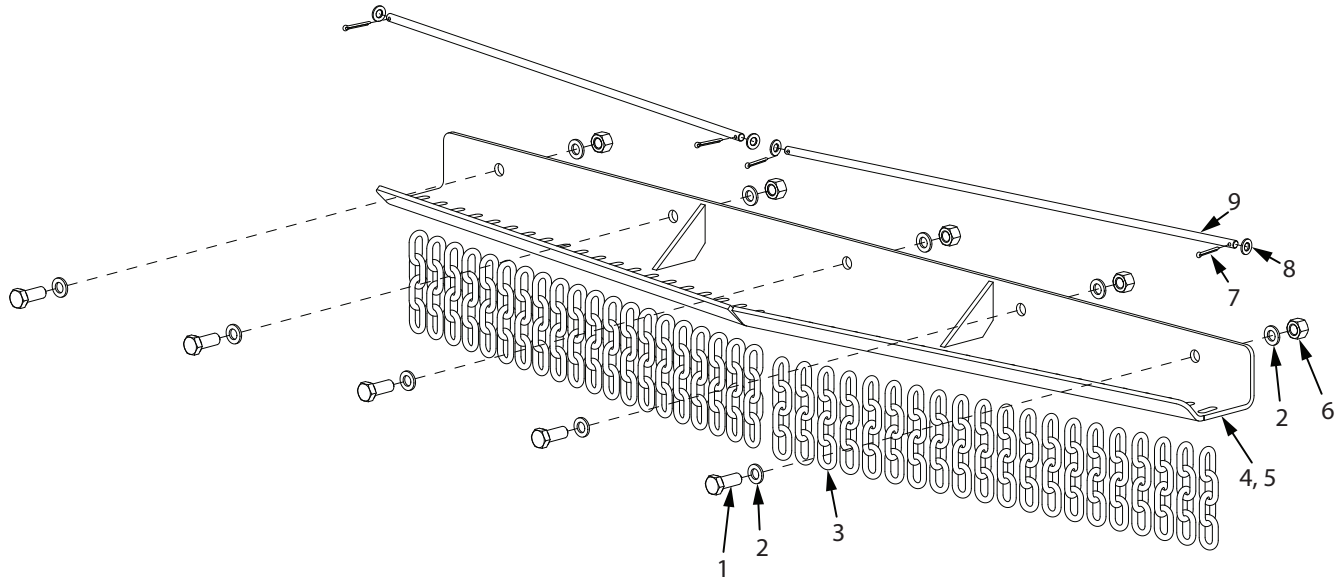
KEY	PART #	DESCRIPTION	QTY.
1	21668	BOLT M14 X 60 HEX	2
2	21669	BOLT M22 X 70 HEX	2
3	21665	BOTTOM BRACE BLADE MOUNT	1
4	21667	BUSHING BLADE MOUNT	2
5	21666	BLADE ROUGH CUT MOWER	2
6	21664	BLADE MOUNT WELDMENT	1
7	21674	WASHER M22 X 39 X 3 FLAT	2
8	21671	NUT M22 X 1.5 NYLOC	2
9	21670	NUT M14 X 1.5 NYLOC	2
10	21673	WASHER M14 X 28 X 2.8 FLAT	2
11	21873	BLADE MOUNT ASSEMBLY	1

**ILLUSTRATED PARTS BREAKDOWN - Wheel Mounts Group**


KEY	PART #	DESCRIPTION	QTY.
1	21611	WHEEL CAP	1
2	21613	BOLT M12 X 1.75 X 30 HEX	1
3	21615	WASHER M12 SPRING LOCK	1
4	21614	WASHER M12 X 37 X 3 FLAT	1
5	21610	WHEEL AND TIRE ASSEMBLY	1
6	18106	BOLT M8 X 1.25 X 20 HEX	1
7	21640	WASHER M8 SPRING LOCK	1
8	400024	WASHER M8 X 16 X 1.6 FLAT	3
9	21641	BUSHING RETAINER	1
10	21623*	WHEEL HUB BATTERY BOX SIDE	1
11	21602*	WHEEL HUB GAS TANK SIDE	1
12	13508	NUT M8 NYLOC	9
13	21811	WHEEL LATCH PIN ASSEMBLY	1
14	21616	WHEEL HUB SPACER	1
15	21618	BOLT M8 X 1.25 X 30 SOCKET	2
16	21635*	DECK HEIGHT ADJUSTER BATTERY BOX SIDE	1
17	21634*	DECK HEIGHT ADJUSTER ENGAGE LEVER SIDE	1
18	13826	BOLT M8 X 1.25 X 25 HEX	7
19	3245	WASHER M8 X 24 X 2.2 FLAT	14
20	21600	BOLT M10 X 1.5 X 55 HEX	1
21	2431	WASHER M10 X 20 X 2 FLAT	2
22	W1265V0903	NUT M10 NYLOC	1
23	21624	Handle Pin	4

\*Order Wheel Hubs and Deck Height Adjusters according to their description. If you require assistance, please call Acreage™ at 1-800-345-6007.

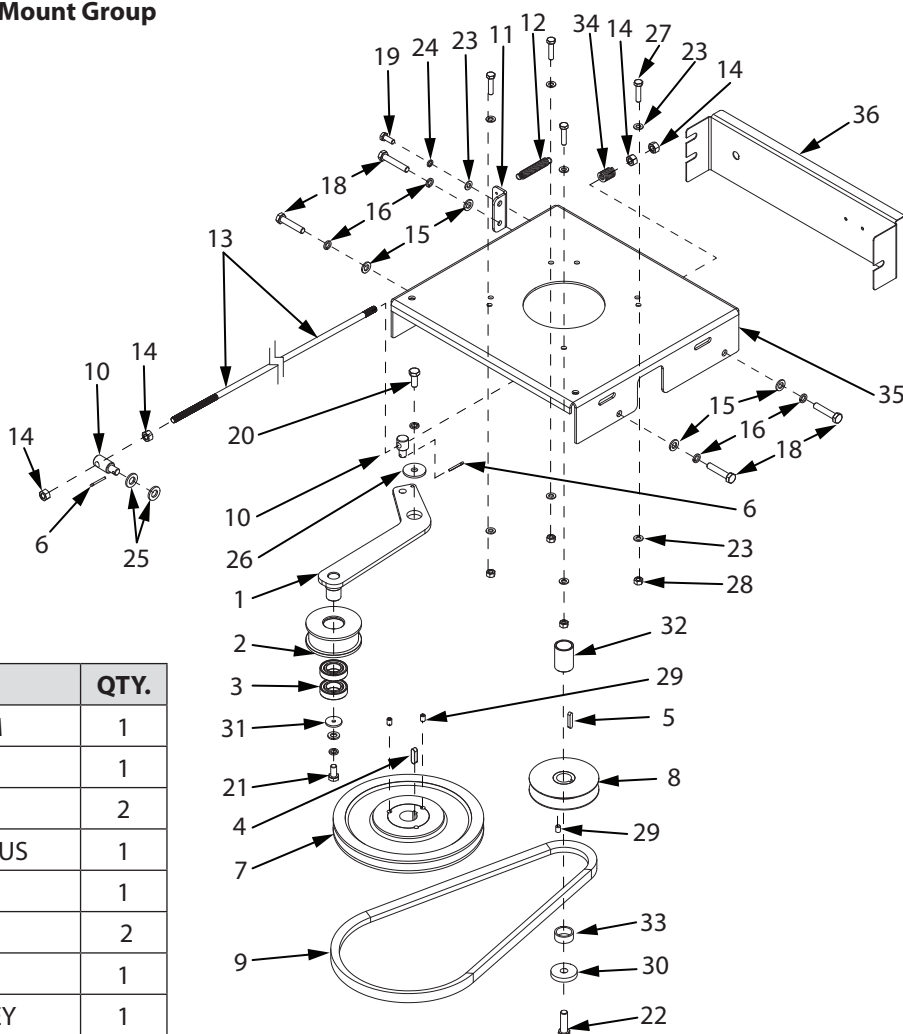
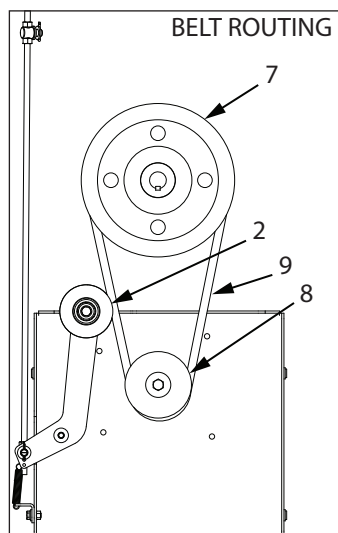
**ILLUSTRATED PARTS BREAKDOWN - Brush Guards Group**



KEY	PART #	DESCRIPTION	QTY.
1	21613	BOLT M12 X 1.75 X 30 HEX	5
2	21632	WASHER M12 X 24 X 2.5 FLAT	10
3	21354	CHAIN ASSEMBLY	40
4	21361*	BRUSH GUARD TOW BAR SIDE	1
5	21332*	BRUSH GUARD ENGINE SIDE	1
6	18274	NUT M12 NYLOC	5
7	21304	COTTER PIN	4
8	400024	WASHER M8 X 16 X 1.6 FLAT	4
9	21374	ROD CHAIN MOUNT	2

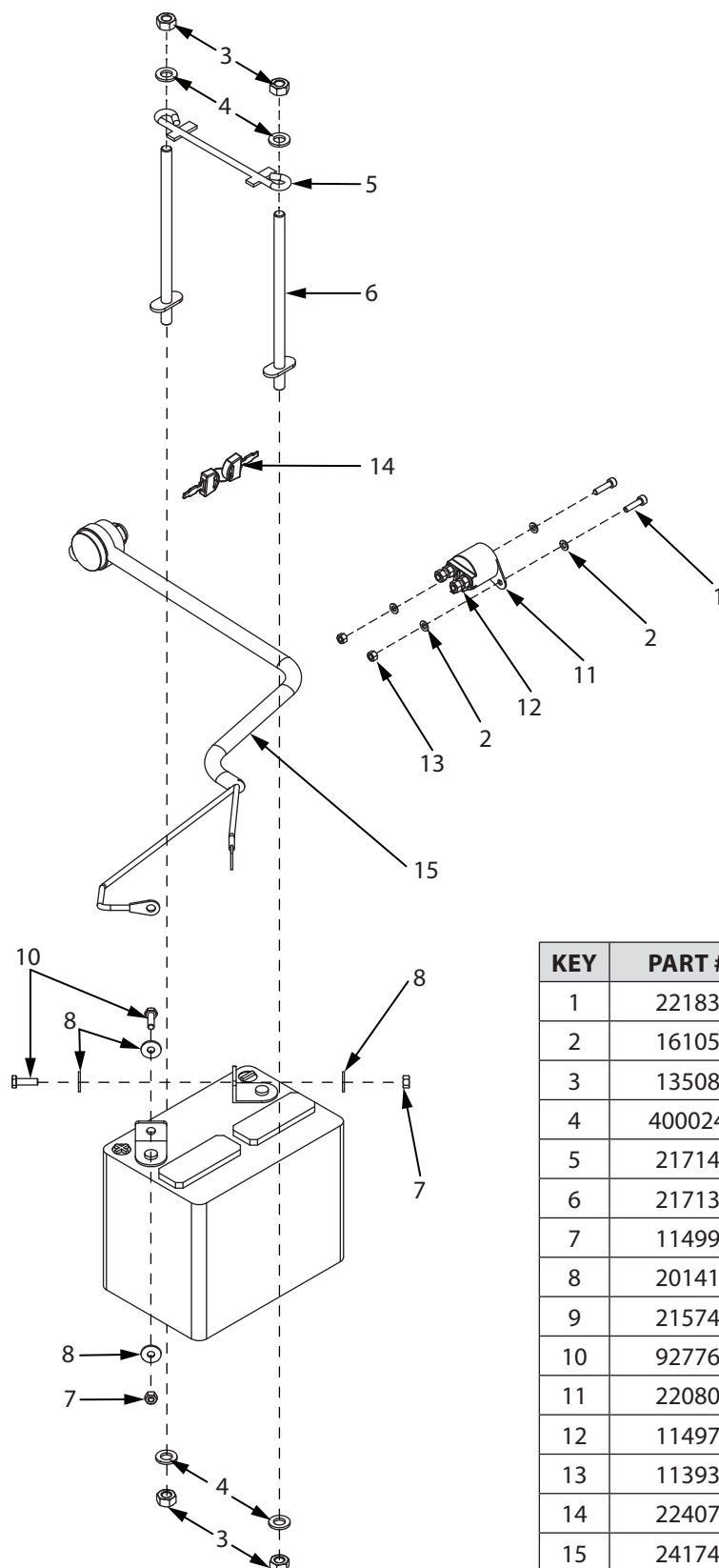
\*Order Brush Guards according to their description. If you require assistance, please call Acreage™ at 1-800-345-6007.

## ILLUSTRATED PARTS BREAKDOWN - Engine Mount Group



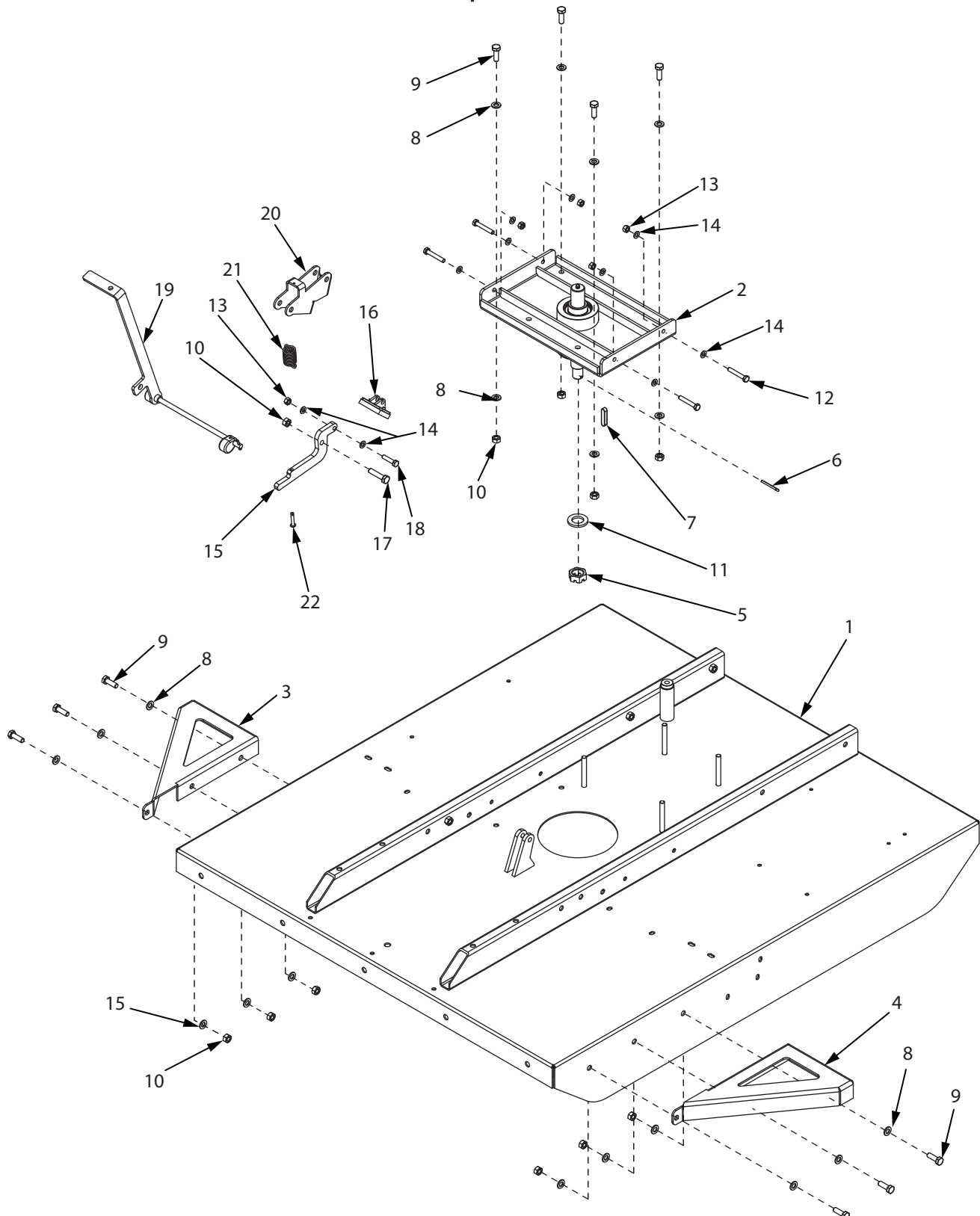
KEY	PART #	DESCRIPTION	QTY.
1	21699	IDLER PULLEY PIVOT ARM	1
2	21700	PULLEY 85MM	1
3	21702	BEARING	2
4	21691	KEY 30 X 7 8MM X 4 RADIUS	1
5	21694	KEY CRANK SHAFT	1
6	21304	COTTER PIN	2
7	21693	PULLEY 236.4MM	1
8	22077	ASSEMBLY ENGINE PULLEY WITH SET SCREW	1
9	21701	BELT	1
10	21598	MOUNT ENGAGE ROD	2
11	21659	MOUNT ROD	1
12	21660	SPRING 20.5MM X 19 COILS X 3MM WIRE	1
13	23427	ENGAGE ROD	1
14	3235	NUT M10 X 1.5 HEX	4
15	2431	WASHER M10 X 20 X 2 FLAT	5
16	21656	WASHER 1/4" SPRING LOCK	6
17	20145	BOLT M10 X 1.5 X 50 HEX	3
18	21600	BOLT M10 X 1.5 X 55 HEX	1
19	18106	BOLT M8 X 1.25 X 20 MM HEX	1
20	19124	BOLT M10 X 1.5 X 25 HEX	1
21	3238	BOLT M10 X 1.5 X 20 HEX	1
22	21722	BOLT M12 X 1.75 X 40 HEX	1

KEY	PART #	DESCRIPTION	QTY.
23	400024	WASHER M8 X 16 X 1.6 FLAT	9
24	21640	WASHER 1/4" SPRING LOCK	1
25	21632	WASHER M10 X 20 X 2 FLAT	2
26	10811	WASHER M10 X 37 X 1.5 FLAT	1
27	20816	BOLT M8 X 1.25 X 35 HEX	4
28	13508	NUT M8 HEX	4
29	3313	SET SCREW M8 X 1.25 X 12 MM	2
30	21721	RETAINER CRANK SHAFT	1
31	21595	RETAINER BELT ENGAGE IDLER	5
32	22044	SPACER 32 X 26.3 X 45 MM	1
33	22547	SPACER 32 X 26.3 X 13 MM	1
34	23419	BELT TENSION SPRING	1
35	23470	PANEL ENGINE MOUNT	1
36	23421	KEY PANEL	1

**ILLUSTRATED PARTS BREAKDOWN - Battery Box Group**


KEY	PART #	DESCRIPTION	QTY.
1	22183	BOLT M5 X 0.8 X 20 HEX HEAD	2
2	16105	WASHER M5 X 10 X 1.0 FLAT	4
3	13508	NUT M8 NYLOC	4
4	400024	WASHER M8 X 16 X 1.6 FLAT	4
5	21714	BRACKET BATTERY TIE DOWN	1
6	21713	POST BATTERY TIE DOWN	2
7	11499	NUT M6 NYLOC	2
8	20141	WASHER M6 X 12 X 1.6 FLAT	6
9	21574	BATTERY LEAD ACID 165 CCA	1
10	92776	BOLT M6 X 1.0 X 20 HEX HEAD	2
11	22080	SOLENOID WIRE MOUNT	1
12	11497	NUT M6 X 1.0 HEX	4
13	11393	NUT M5 NYLOC	2
14	22407	KEY SET	1
15	24174	WIRE HARNESS	1

**ILLUSTRATED PARTS BREAKDOWN - Mower Deck Group**

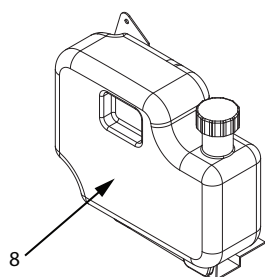


KEY	PART #	DESCRIPTION	QTY.
1	23407	DECK	1
2	21690	ASSEMBLY DRIVE SHAFT MOWER	1
3	21371	WHEEL GUARD GAS TANK SIDE	1
4	21367	WHEEL GUARD BATTERY SIDE	1
5	21716	M24 CASTLE NUT	1
6	21715	PIN COTTER 4 X 44MM LONG	1
7	21692	KEY 45 X 8 X 10 MM X 5 RADIUS	1
8	2431	WASHER M10 X 20 X 2 FLAT	20
9	21247	BOLT M10 X 1.5 X 30 HEX HEAD	10
10	W1265V0903	NUT M10 HNYLK	11
11	21717	WASHER M24 X 44 X 4.6 FLAT	1

KEY	PART #	DESCRIPTION	QTY.
12	23498	BOLT M8 X 44 X 4.6 FLAT	1
13	13508	NUT M8 1.0 HSF	5
14	400024	WASHER M8 8.4 X 16 X 1.6 FLAT	10
15	23410	PIVOT BRAKE ARM	1
16	21704	ASSEMBLY DRIVE BRAKE	1
17	21872	BOLT M10 X 1.5 X 45	1
18	20816	BOLT M8 X 1.25 35 HEX	1
19	23411	ASSEMBLY CAM	1
20	23417	CAM ROD BRACKET	1
21	24114	BRAKE SPRING	1
22	24115	BRAKE PIN	1

\* Deck cannot be replaced, please contact Acreage at 1-800-345-6007 for details.

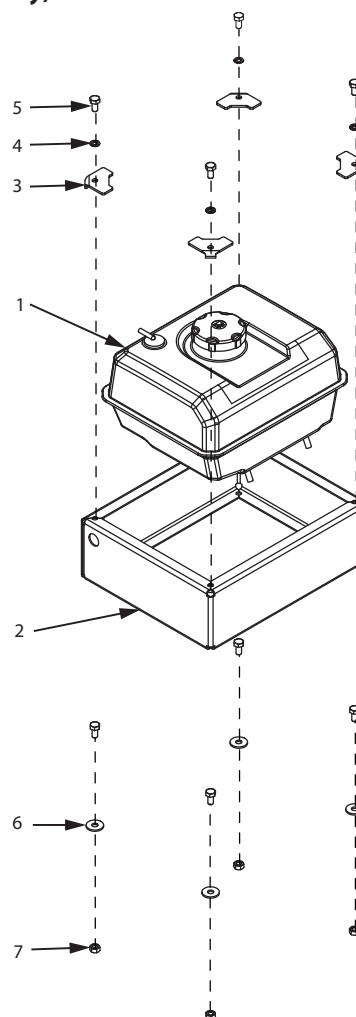
### ILLUSTRATED PARTS BREAKDOWN - Gas Tank Kit (RC4422 Only)



KEY	PART #	DESCRIPTION	QTY.
1	21654	GAS TANK RC4432	1
2	23424	ASSEMBLY GAS TANK BOX	1
3	23426	CUSTOM WASHER	4
4	W1200114	WASHER M8 X 1.9 SPRLK BLK OX HIGH COLLAR	4
5	17984	BOLT M8 X 1.25 X 16 HEX	8
6	3245	WASHER M8 8.4MM X 24MM X 2.2MM ZN	4
7	W1265V0900	NUT M8 X 1.25 HNYLK GR8.8 ZN	4

KEY	PART #	DESCRIPTION	QTY.
8	24552	GAS TANK RC4422	1

### ILLUSTRATED PARTS BREAKDOWN - Gas Tank Kit (RC4432 Only)



**WARRANTY TERMS AND CONDITIONS****PRODUCT WARRANTY: 5-YEAR LIMITED WARRANTY – 03/11/2015**

Ardisam, Inc. (Ardisam), a manufacturing company, warrants this product to be free from defects in the material or workmanship for a period of five years from the date of purchase. If there is insufficient evidence of the purchase date, the effective date of this warranty will begin on the rough cut mower's date of manufacture. During the five-year warranty of this product, Ardisam will furnish, at their discretion, parts and labor to correct any defect caused by faulty material or workmanship. In no event shall recovery of any kind be greater than the amount of the purchase price of the product sold. Ardisam reserves the right to inspect any incoming units returned under warranty to determine if the warranty applies before performing any warranty related work (including parts and components). Any unit used in a commercial application, or producing income is covered for a period of 90 days after purchase. This warranty applies to the original owner with a proof of purchase and is not transferable. For the warranty to be valid, the product must be registered online, or the warranty card must be filled out and received by Ardisam, within 30 days of purchase. This warranty excludes parts due to normal wear, wear items such as belts, bearings, bushings, cables, springs, wheels, tires, blades, debris deflector chain, routine maintenance items such as batteries, filter elements, o-rings, seals, lubricants, and tune-ups, accessory parts such as manual canister and battery box. Negligent use such as running dry (without oil), or below minimum oil levels, damage to tow bar caused by over cornering, using the rough cut mower for a purpose other than for which it was designed and manufactured, using the rough cut mower in violation of local codes, ordinances and good trade practices voids this warranty. \*These warranties apply only to products which have not been subjected to negligent use, abuse, misuse, overload, improper installation, alteration, accident, acts of God (or other events beyond Ardisam's control), vandalism, unauthorized parts, failure to use proper fuel and oil, or if repairs have been performed at a non-authorized service facility. These warranties shall not cover damage from normal wear and tear, normal maintenance parts and services, lightning; nor improper installation, operation, storage, or maintenance; nor operating the equipment above recommended maximums as stated in this manual and the accompanying engine manual. These warranties supersede all other warranties either expressed or implied and all other obligations or liabilities on the part of Ardisam. Ardisam, does not assume, and does not authorize any other person to assume for Ardisam, any liability in connection with the sale of Ardisam products. ***To be at "No Charge," warranty work must be sent directly to and performed by Ardisam or an Ardisam Authorized Warranty Service Facility.*** To obtain warranty service and/or replacement instructions, contact the Ardisam Customer Service Department at 800-345-6007. If you choose to ship your product to Ardisam for warranty repair, you must first have prior approval from Ardisam by calling the Ardisam Customer Service Department for a return material authorization number (RMA#). Under these circumstances, all items must be shipped prepaid. Ardisam will at no charge, repair or replace, at the discretion of Ardisam, any defective part which falls under the conditions stated above. Ardisam retains the right to change models, specifications and price without notice. Ardisam shall not be obligated to ship any repair or replacement product to any location outside of the United States of America or Canada. Some states and countries do not allow the limitations on how long an implied warranty lasts, or the exclusion or limitation of incidental or consequential damages, so the above limitation may not apply to you. This warranty gives you specific legal rights, and you may also have other rights which vary from state to state and country to country.

**SEE ENGINE MANUAL FOR ENGINE WARRANTY**

P/N: 22124  
REV1: 031115  
© 2015 Ardisam, Inc.  
All Rights Reserved.

Acreage™, Division of Ardisam, Inc.  
1160 8th Avenue; P.O. Box 666  
Cumberland, Wisconsin 54829  
800-345-6007 · Fax (715) 822-4180  
E-mail: [info@acreageimplements.com](mailto:info@acreageimplements.com)



## This image shows a single sheet of white paper with horizontal ruling lines. The lines are evenly spaced and run across the width of the page. There are no margins, text, or other markings on the paper.



Acreage™, Division of Ardisam, Inc.  
1160 8th Avenue, PO Box 666  
Cumberland, WI 54829  
800-345-6007 | Fax 715-822-2223  
E-mail: [info@acreageimplements.com](mailto:info@acreageimplements.com)

All weights, specifications and features are approximate and are subject to change without notice. Due to continuous product improvements, product images may not be exact. Items used for props not included. Some assembly may be required.

Check for parts online at [www.acreageimplements.com](http://www.acreageimplements.com) or call 800-345-6007 M-F 8-5