

Product information presented here reflects conditions at time of publication. Consult factory regarding discrepancies or inconsistencies.



PUMP COMPANY

Zoeller Family of Water Solutions™

MAIL TO: P.O. BOX 16347 • Louisville, KY 40256-0347
SHIP TO: 3649 Cane Run Road • Louisville, KY 40211-1961
(502) 778-2731 • 1 (800) 928-PUMP • FAX (502) 774-3624

visit our web site:
www.zoeller.com

SECTION: 2.60.090

FM2193

0614

Supersedes

0513



THE ZOELLER® Oil Guard® SYSTEM

FOR SUBMERSIBLE DEWATERING APPLICATIONS

APPLICATIONS:

Designed to help protect the environment and equipment from the dispersion of oils and/or hydrocarbons.

- Elevator Sumps
- Transformer Vaults
- Manufacturing Facilities

SYSTEMS:

- Operation of the Zoeller® Oil Guard® System has been independently verified by OnSpeX, div. of CSA, when installed in accordance with our instructions.
- Choose from four model pumps. Includes pump, Oil Smart® switch and alarm (optional control panel).
- Control systems are ASME A17.1 compliant.

Oil Smart® SWITCH AND ALARM PANEL FEATURES:

- NEMA-4X alarm panel enclosure
- Audible, light alarms and dry contacts
- Preset "on" and "off" points differentiate oil and water and alerts maintenance personnel of high water or oil detected conditions
- 20 ft. piggyback electrical supply cord
- 20 amp internal relay
- Alarm test and silence switches
- 304 stainless steel probes
- UL508 approved switch



Model 940-0011 shown. Product may not be exactly as shown.

PUMP FEATURES:

- Pumps are durable cast iron construction with powder coated epoxy finish and all stainless steel fittings. See back page for a list of pump catalog sheets
- Tested to UL Standard UL778 and Certified to CSA Standard CSA 22.2 No. 108

SIMPLEX PANEL FEATURES:

- Oil Smart® liquid alarm switch
- Oil Smart® pump switch (10-2282)
- 115 volts, single phase
- NEMA 4X watertight enclosure with lockable latch
- 30 amp motor start relay
- Pump HOA switch
- Top-mounted red alarm beacon light
- 81 - 84 decibel rated alarm horn
- Horn silence and alarm test switches
- Alarm automatically resets
- Dry auxiliary alarm contacts
- Separate circuit protection for alarm
- Circuit breaker protection
- Pump "Run" indicator light



Model 10-2149



DUPLEX ALTERNATING PANEL FEATURES:

- Oil Smart® liquid alarm switch
- Oil Smart® pump switch (10-2283)
- Oil Smart® high water alarm switch for high demand two pump operation
- 115 volts, single phase
- NEMA 4X watertight enclosure with lockable latch
- Two 30 amp motor start relays
- Pump HOA switches
- Top mounted red alarm beacon light
- 81 - 84 decibel rated alarm horn
- Horn silence and alarm test switches
- Alarm automatically resets
- Dry auxiliary alarm contacts
- Separate circuit protection for alarm
- Pump "Run" indicator light



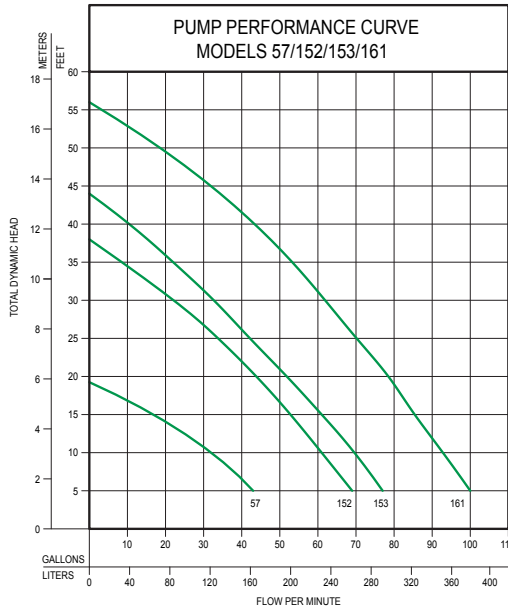
Model 10-2150



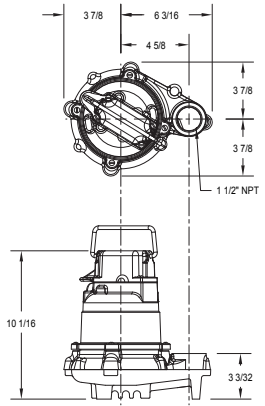
**TOTAL DYNAMIC HEAD/FLOW PER MINUTE
EFFLUENT AND DEWATERING**

MODEL		57		152		153		161	
Feet	Meters	Gal.	Liters	Gal.	Liters	Gal.	Liters	Gal.	Liters
5	1.5	43	163	69	261	77	291	100	379
10	3.0	34	129	61	231	70	265	93	352
15	4.6	19	72	53	201	61	231	85	322
20	6.1	--	--	44	167	52	197	79	299
25	7.6	--	--	34	129	42	159	70	265
30	9.1	--	--	23	87	33	125	62	235
35	10.7	--	--	--	--	22	83	54	204
40	12.2	--	--	--	--	11	42	45	170
50	15.2	--	--	--	--	--	--	20	76
Shut-off Head:		19.25 ft (5.9 m)		38 ft (11.6 m)		44 ft (13.4 m)		56 ft (17 m)	

018939

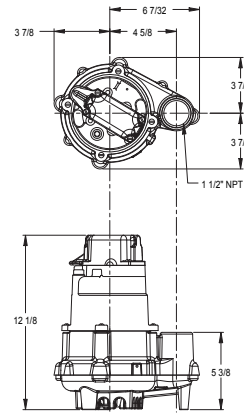


Model 57



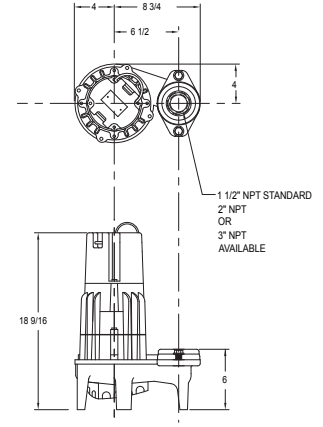
(See FM0493)

Model 152/153



(See FM1919)

Model 161



(See FM0460)

COMPONENTS:

Part Number	Description	Alarm Panel	Oil Smart® Pump Switch	Oil Smart® High Liquid Alarm Switch	Oil Smart® High Liquid Switch
10-1526	Oil Smart® Alarm Panel	✓	---	✓	---
10-1528	Oil Smart® Pump Switch	---	✓	---	---
10-1727	Oil Smart® Pump Switch w/o Plug	---	✓	---	---
10-2149	Oil Smart® Simplex Panel	✓	✓	✓	---
10-2150	Oil Smart® Duplex Panel	✓	✓	✓	✓
10-2516	Oil Smart® Simplex Panel w/ Mtr. Cont.	✓	✓	*	---

✓ INCLUDED * VARIABLE LEVEL FLOAT SWITCH

These systems are not designed for Explosion Proof Environments. Please consult factory for special options and requirements.

CAUTION

All installation of controls, protection devices and wiring should be done by a qualified licensed electrician. All electrical and safety codes should be followed including the most recent National Electrical Code (NEC) and the Occupational Safety and Health Act (OSHA).

CHOOSE A PREPACKAGED SYSTEM:

Part Number	Description	Alarm Panel	Oil Smart® Pump Switch	Nonauto Pump	Pump Part Number	Voltage	HP	Amps	Elevator System
940-0005	Oil Guard® Pump Switch and Panel	10-1526	10-1528	N57	57-0002	115	3/10	9.7	---
940-0006	Oil Guard® Pump Switch and Panel	10-1526	10-1528	N152	152-0002	115	4/10	8.5	---
940-0007	Oil Guard® Pump Switch and Panel	10-1526	10-1528	N153	153-0002	115	1/2	10.5	---
940-0008	Oil Guard® Pump Switch and Panel	10-1526	10-1528	N161	161-0002	115	1/2	15.0	---
940-0011	Oil Guard® Pump Switch and Panel	10-1526	10-1528	*N57	57-0070	115	3/10	9.7	✓**
940-0012	Oil Guard® Pump Switch and Panel	10-1526	10-1528	*N152	*152-0028	115	4/10	8.5	✓
940-0013	Oil Guard® Pump Switch and Panel	10-1526	10-1528	*N153	*153-0027	115	1/2	10.5	✓
940-0014	Oil Guard® Pump Switch and Panel	10-1526	10-1528	*N161	*161-0090	115	1/2	15.0	✓

* 6' SO JACKETED CORD FOR OIL-RESISTANCE

NOTE: BUILD YOUR OWN SYSTEM. CONTACT FACTORY FOR SPECIFICATIONS.

** DOES NOT MEET ELEVATOR CODE FOR ELEVATORS WITH FIREFIGHTER EMERGENCY OPERATION. DOES NOT PROVIDE 50 GPM.