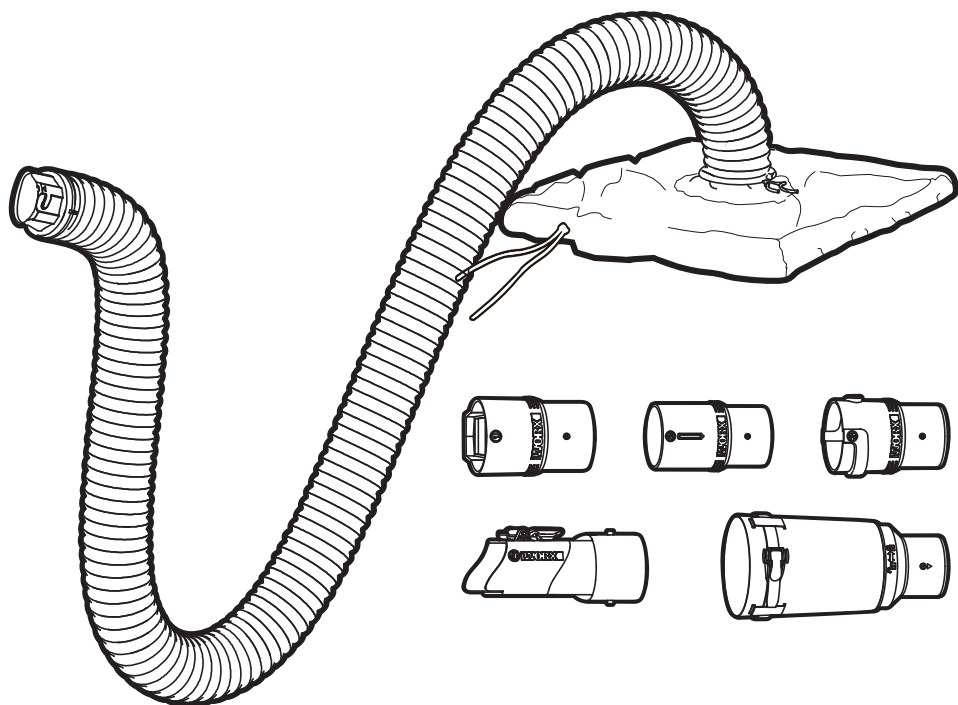


WORX[®]

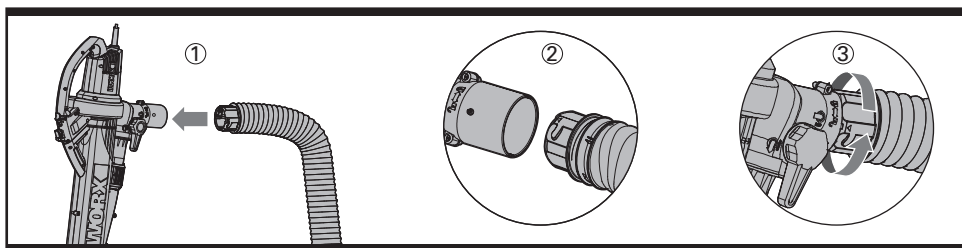


LEAFPRO[™]

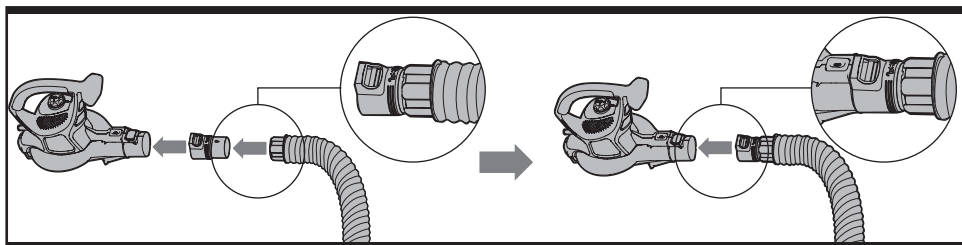


HELPLINE NUMBER
1-866-354-WORX (9679)

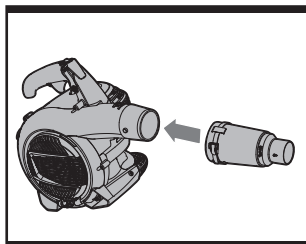
WA4054 / WA4054.1



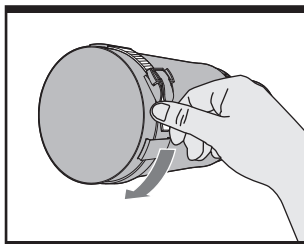
A1



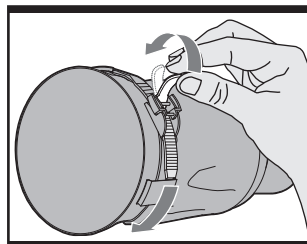
A2



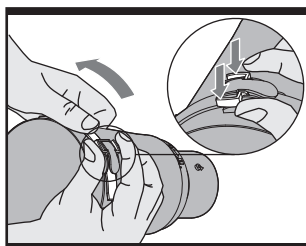
B1



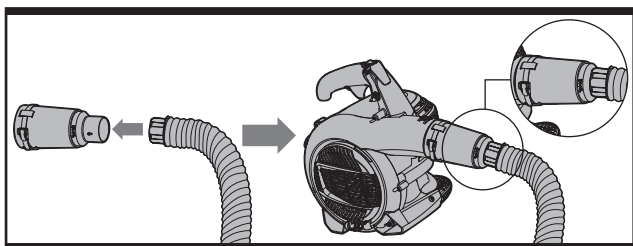
B2



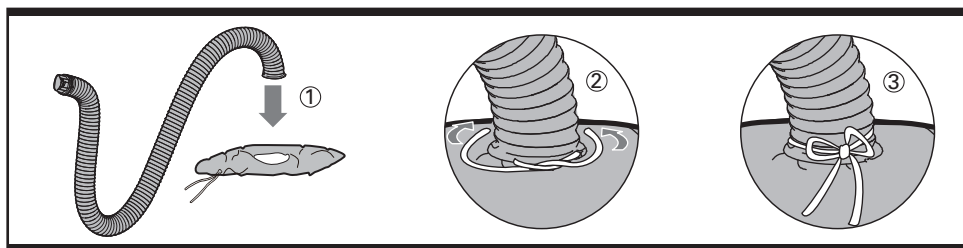
B3



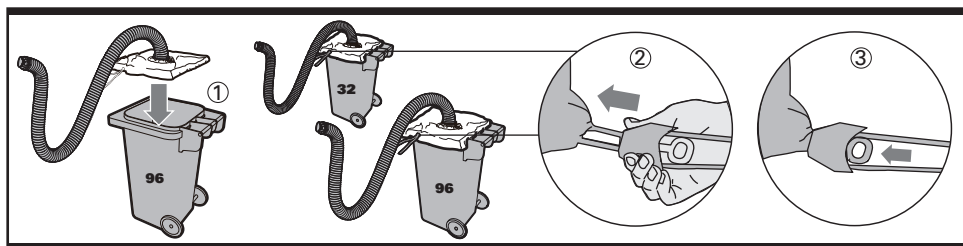
B4



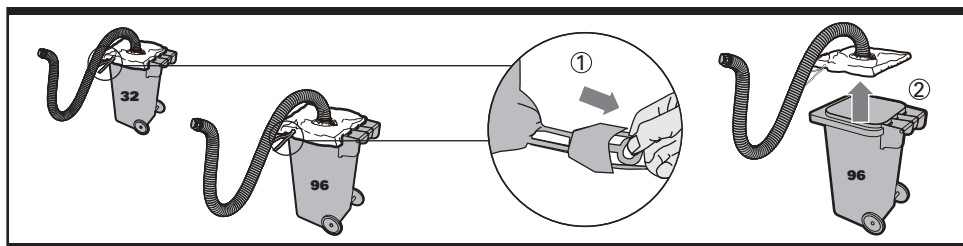
B5



C



D



E

WORX LEAF PRO™ High Capacity Universal Leaf Collection System

The following compatible brands are trademarks owned by third parties which may be registered by their respective owners: Black & Decker®, Poulan Pro®, Murray®, Husqvarna®, Craftsman®, Ryobi®, and Toro®.

Table of Contents:

Section 1: Blower/Vac Model Adapter List

Section 2: TRIVAC® - Universal Collection System Assembly

Section 3: Popular Brand Models - Universal Collection System Assembly

Section 4: Other Brand Models - Universal Collection System Assembly

Section 5: Container Installation - LEAF PRO™ Universal Collection

Section 6: Specifications

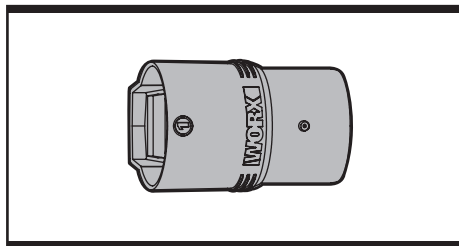
Section 7: Troubleshooting

WARNING: This product maybe contains lead, phthalate or other chemicals known to the State of California to cause cancer, birth defects and other reproductive harm. Please wash your hands after use.

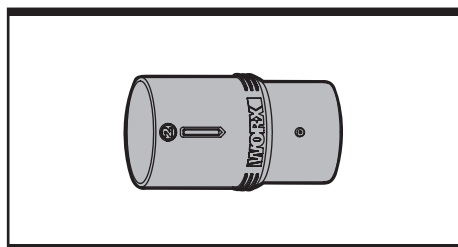
SECTION 1

Blower/Vac Model Adapter List

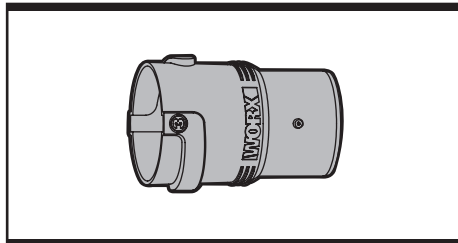
① Fits popular Black & Decker® models



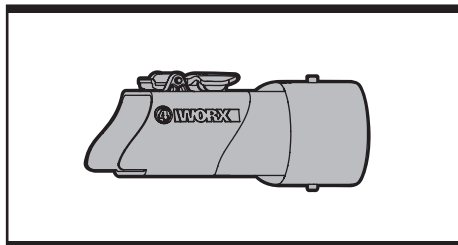
② Fits popular Poulan Pro®, Murray®, Husqvarna® and Craftsman® models



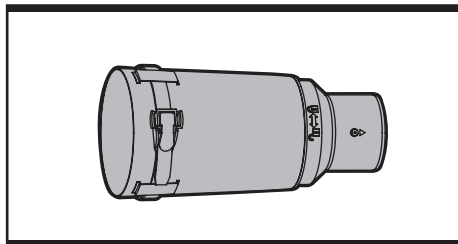
③ Fits popular Ryobi® models



④ Fits popular Toro® models



⑤ Fits other Blower/Vac brands



SECTION 2

Assembly: TRIVAC® - Universal Collection System

If your blower/vac is not a WORX TRIVAC®, then please proceed to Section 3. Align the arrow, on the Collection System adapter, to the smaller Locking Peg on the TRIVAC® vacuum outlet. Then slide the Collection System adapter over the aligned Locking Pegs and turn clockwise to lock, ensuring they are fully secured. No additional adapter is needed. (Please refer to step A1). To remove the Universal Collection System, simply reverse the installation steps.

SECTION 3

Assembly: Popular Brand Models - Universal Collection System

Black & Decker®, Poulan Pro®, Murray®, Husqvarna®, Craftsman®, Ryobi®, and Toro®. If your blower/vac will not fit any of the “Engineered Fit” adapters, then please proceed to Section 4.

Please refer to the Blower/Vac Model Adapter List in Section 1. Choose the correct “Engineered Fit” adapter and place it into the Vacuum Outlet shown in A2. Align the collection system Hose Inlet with the Locking Pegs on the adapter as shown in A2. Then slide the Collection System adapter over the aligned Locking Pegs and turn clockwise to lock, ensure they are fully secured (Please refer to step A2).

To remove the Universal Collection System, simply reverse the installation steps.

SECTION 4

Assembly: Other Brand Models - Universal Collection System

Other Brand Models – Choose the “Universal Fit” adapter (5) and place it onto the Vacuum Outlet. Please refer to step B1-B5

1. Place the fabric side of the Universal Adapter over the Vacuum Outlet and slide it on as far as possible (B1)

2. Check to make sure the strap is threaded

through the locking mechanism. Then pull to tighten the strap (B2). Increase the tension by pulling the latch up and down to tighten (B3). To loosen, simply press the two outside latches down and then pull the strap out from other side (B4).

3. Test that the Universal Adapter will not slide off of the blower/vac outlet

4. If further tightening is needed, then pull the middle latch up and down until the adapter is tight. Please recheck if it will slide off of the blower/vac outlet (B3). Realign and repeat these steps if needed. To loosen, simply press the two outside latches down and then pull the strap out from other side. (B4)

5. Slide the Collection System adapter over the aligned Locking Pegs and turn clockwise to lock, ensure they are fully secured (Please refer to step B5).

Please note: The Universal Adapter may have space between the Vacuum Outlet and Adapter Outlet after installation.

To remove the adapter, simply press the two outside latches down and loosen the strap to remove it from the Vacuum Outlet (B4).

SECTION 5

Assembly: Container Installation - LEAF PRO™ Universal Collection

SECTION 6

SPECIFICATIONS

- 8 ft hose with up to 16 ft of surrounding reach

- 4 factory fit connectors + 1 universal connector fits all major brand blower/vacs up to 5” in diameter

SECTION 7

TROUBLESHOOTING (WA4054)

If you are having a hard time keeping the cover on the trash can please try the following: Cut a notch between the handle and trash can rim to create a groove for the cover to rest in.