

Manufacture’s Limited Warranty for
 *Precision*
 Pull Behind Accessories

The limited warranty set forth below is given by Precision Products Incorporated with respect to new merchandise purchased and used in the United States, its possessions and territories.

Precision Products Incorporated warranties the product (s) listed against defects in material and workmanship, and will at our option, repair or replace, free of charge, any part found to be defective in materials or workmanship. This limited warranty shall only apply if this product has been assembled, operated, and maintained in accordance with the owner’s manual furnished with the product, and has not been subject to misuse, abuse, neglect, accident, improper maintenance, alteration, vandalism, theft, fire, water, or damage because of other peril or natural disaster.

Normal wear parts or components thereof are subject to separate terms as follows: All normal wear parts or component failures will be covered on the product for a period of one year. Parts found to be defective within the warranty period will be replaced at our expense. Our obligation under this warranty is expressly limited to the replacement or repair, at our option, of parts found to be defective in material and workmanship.

Contacting Service

Warranty parts replacements are available, ONLY WITH PROOF OF PURCHASE, through our Customer Service Department.

Call **1 (800) 225-5891**

This limited warranty does not provide coverage in the following cases:

- 1. Routine maintenance items such as lubricants and filters.
- 2. Normal deterioration of the exterior finish due to use or exposure.
- 3. Transportation and/or labor charges.

No implied warranty, including any implied warranty of merchantability of fitness for a particular purpose, applies after the applicable period of express written warranty above as to the part as identified below. No other expressed warranty, whether written or oral, except as mentioned above, given by any person or entity, including a dealer or retailer, with respect to any product, shall bind Precision Products Inc. during the period of the warranty, the exclusive remedy is repair or replacement of the product as set forth above. The provisions as set forth in this warranty provide the sole and exclusive remedy arising from the purchase.

Precision Products Inc. will not be liable for incidental or consequential loss or damage including, without limitation, expenses incurred for substitute or replacement lawn care services, or for rental expenses to temporarily replace a warranted product.

Some states do not allow the exclusion or limitation of incidental or consequential damages, or limitations on how long an implied warranty lasts, so the above exclusions or limitations may not apply to you.

During the warranty period, the exclusive remedy is replacement of the part. In no event shall recovery of any kind be greater that the amount of the purchase price of the product sold. Alteration of safety features of the product shall void this warranty. You assume the risk and liability for loss, damage, or injury to you and your property and/or to others and their property arising out of the misuse or inability to use this product.

This limited warranty shall not extend to anyone other than the original purchaser or to the person for whom it was purchased as a gift.

Local Law to this Warranty

This limited warranty gives you specific legal rights, and you may also have other rights which vary from state to state.

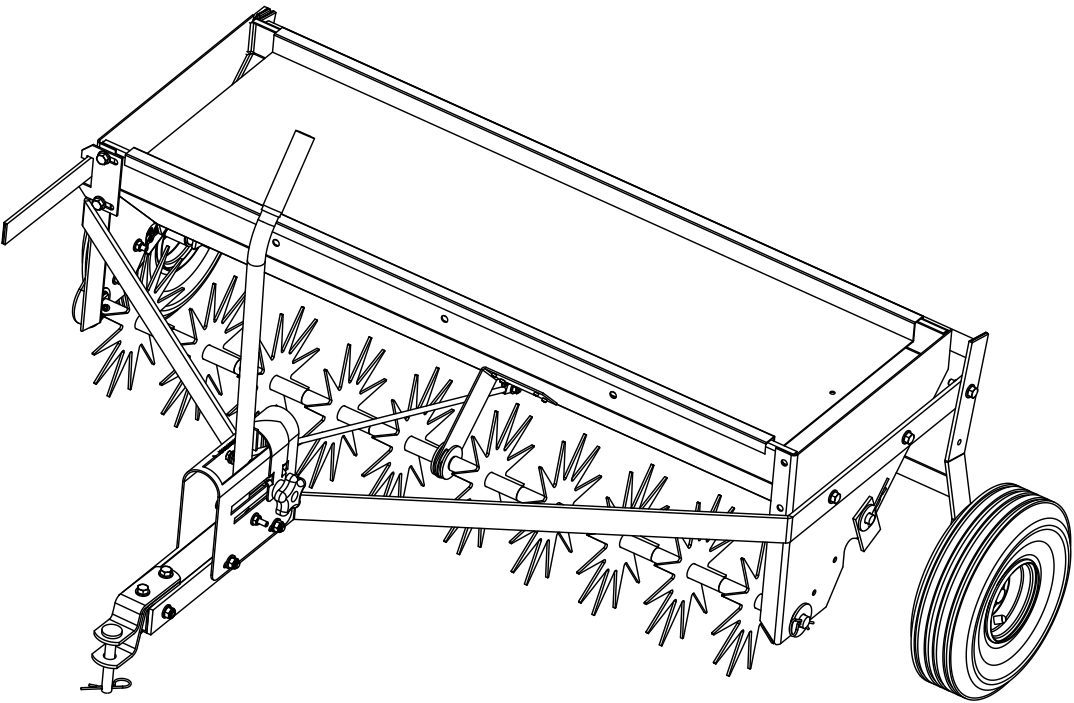
Warranty Period

The warranty period stated below begins with the **Proof of Purchase**. Without the proof of purchase, the warranty period begins from the date of manufacture, determined by the serial number’s manufacturing date.

Product Warranty Period

The warranty period for this product is as follows: All parts are covered for 1 year.

*Precision*
 42” Spike Aerator /  
 Owner’s Manual | TDSA42PT | Drop Spreader Combo



Tread pattern on tires may vary.

Manual Contents

Safety Instructions .....	2
Assembly.....	4-5
Operation.....	5
Maintenance.....	5
Parts.....	6-7
Warranty.....	8

Your New Spike Aerator

**Congratulations** on your purchase of a new Precision Products Inc. Spike Aerator/Drop Spreader Combo. Your aerator/drop spreader combo has been engineered and built to give you the most dependable and best performing product possible.

If you experience any problem you can not easily resolve, please feel free to contact our knowledgeable and helpful customer service department toll-free at **1 (800) 225-5891**.

**Caution:** Read all Safety Instructions and Operating Instructions Carefully.

**! Safety Instructions**

All power equipment can cause injury or property damage if operated improperly. Please read and observe the following safety rules and exercise caution at all times when operating equipment.

- Read and understand your tractor’s owner manual and towing safely rules. Know how to operate your tractor before using any attachment.
- Never allow children to operate the towing vehicle. Do not allow adults to operate the vehicle without having read the owner’s manual or receiving proper instruction.
- Do not allow anyone to ride or sit on tow behind equipment during operation.
- Keep adults, children and animals at a safe distance.
- Always wear substantial footwear. Do not wear loose fitting clothing that may get caught in moving parts.
- This unit may have sharp points. Handle with care.
- Keep your eyes and mind on your tractor/attachment and area being covered. Do not let yourself be distracted.
- Stay alert for holes in the terrain and other hidden hazards.
- Tractor braking and stability may be affected with the attachment of this unit. Be aware of changing conditions on slopes. Refer to safety rules in your tractor owner’s manual concerning safe operation on slopes. **Stay Off Steep Slopes.**
- Always operate up and down a slope, never across the face of a slope.
- Do not operate close to creeks, ditches or public highways.
- Always begin with the transmission in first (low) gear and engine at low speed, and gradually increase speed as conditions permit.
- Keep the tractor and attachment in good operating condition and keep safety devices in place.
- Keep all nuts, bolts and screws tight to be sure the equipment is in safe working condition.
- The vehicle and attachment should be stopped and inspected for damage after striking a foreign object. Any damage should be repaired before restarting and operating the equipment.
- Follow the maintenance instructions as outlined in this owner’s manual.
- Should not be towed at more than 3-4 miles per hours.

**Carton Contents**

1. Weight Tray

2. Wheel Bracket Assembly

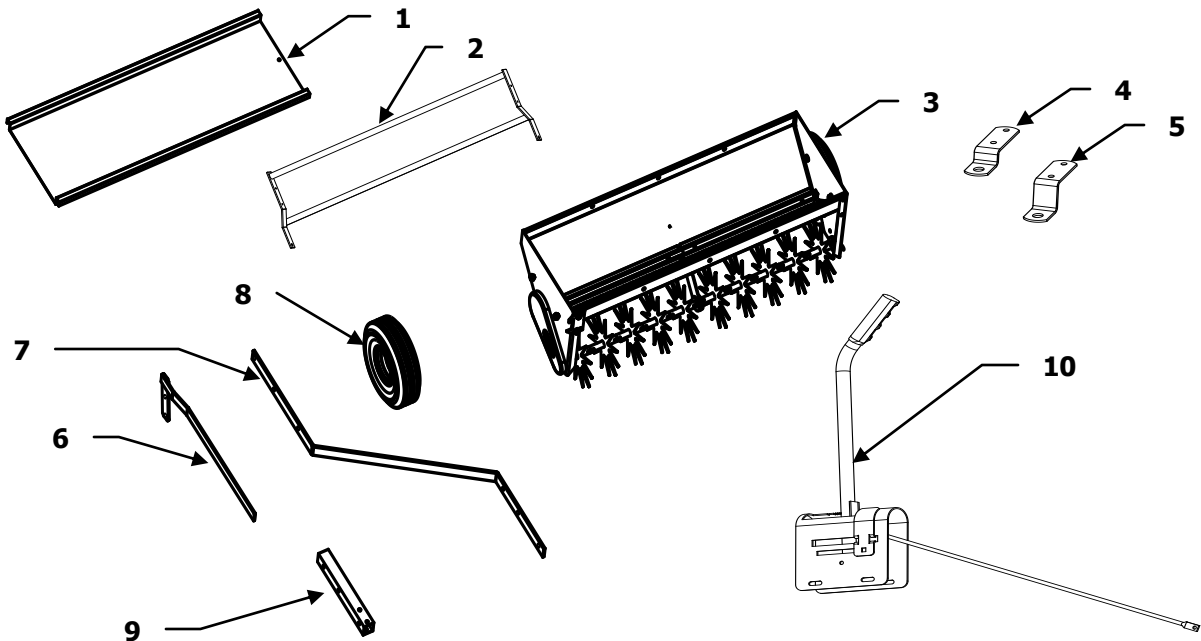
3. Hopper Assembly
4. Clevis Plate #2

5. Clevis Plate #1

6. Wheel Engagement Bar
7. Tow Bar Side (2)

8. Wheel

9. Tow Bar Tube
10. Control Housing



**TDSA42PT**

Ref No.	Part No.	Qty.	Description
1	3339A	2	Wheel
2	4265GY	1	Clevis Plate
3	4266GY	1	Clevis Plate
4	4152	1	Wheel Bracket Assembly
5	4164	2	Tow Bar Side
6	4165	1	Tow Bar Tube
7	4156	10	Blade (star) Assembly
8	1061	2	1/4" x 1' Hex Head Bolt
9	1817	21	1/4" Flat Washer
10	1807	6	1/4" Lock Washer
11	2311	2	1/2" Nylock Nut
12	4324	2	1/2" Jam Nut
13	4224	2	1/2" x 3-1/2" Hex Head Bolt
14	1506	7	1/2" Flat Washer
15	1558	7	1/4" Nylock Nut
16	1441	3	5/16" x 2-1/2" Hex Head Bolt
17	1314	1	5/16" x 3/4" Carriage Bolt
18	1044	10	5/16" Flat Washer
19	3738	5	5/16" x 1" Hex Head Bolt
20	3414	2	1/2" Lock Washer
21	1278	1	3/8" Flat Washer
22	3980	3	7/8" E—Clip
23	1646	8	5/8" Flat Washer
24	3982	4	#6-32 x 1/2" SHCS
25	3983	8	#6-32 x 3/4" SHCS
26	3984	8	#6-32 MSH Nut
27	3985	8	#6 Lock Washer
28	3986	2	#10-24 x 1" SHCS
29	3987	2	#10-24 MSH Nut
30	1647	1	1/4" x 1-1/2" Hex Head Bolt
31	4170	1	Chain

Ref No.	Part No.	Qty.	Description
32	4150	1	Chain Cover
33	4151	1	Hopper Assembly
34	4153	1	Agitator Bar Assembly
35	4154	1	Axle Gear Assembly
36	4155	1	Slide Plate Assembly
37	4158	3	5/8" Metal Bushing
38	4159	2	Agitator Blade
39	4160	1	Lock Plate
40	4161	1	Center Brace
41	4162	1	Control Rod
42	4163	2	1/2" Metal Bushing
43	4157	1	Wheel Engagement Bar
44	4168	1	Engagement Bar Grip
45	3977	1	Control Housing
46	3976	1	Control Handle
47	2163	1	Calibrator Strip
48	3967	1	Control Strip
49	2158	1	Control Knob
50	2157	1	Compression Spring
51	2178	1	5/16" x 5/16" Rubber Roller
52	1029	1	7/8" Handle Grip
53	2179	1	1/4" - 20 x 3" Hex Head Bolt
54	2172	16	5/16" Fender Washer
55	4281	2	5/16" - 18 x 1-1/4" Hex Head Bolt
56	1707	2	5/16" - 18 x 2-3/4" Hex Head Bolt
57	1749	14	5/16" - 18 Nylock Nut
58	3979	1	Spring
59	4289	1	Clevis Pin 5/8" x 2"
60	1042	1	Hitch Pin Clip #14
61	3974	1	Weight Tray.
62	3191	2	3/32" x 1-1/4" Cotter Pin

Not all parts shown. **This a parts list for all parts used in this unit. Parts used by customer for assembly can be found on page 3.**

**Parts and Support**



**Please do not return this product to the store prior to contacting Precision.**

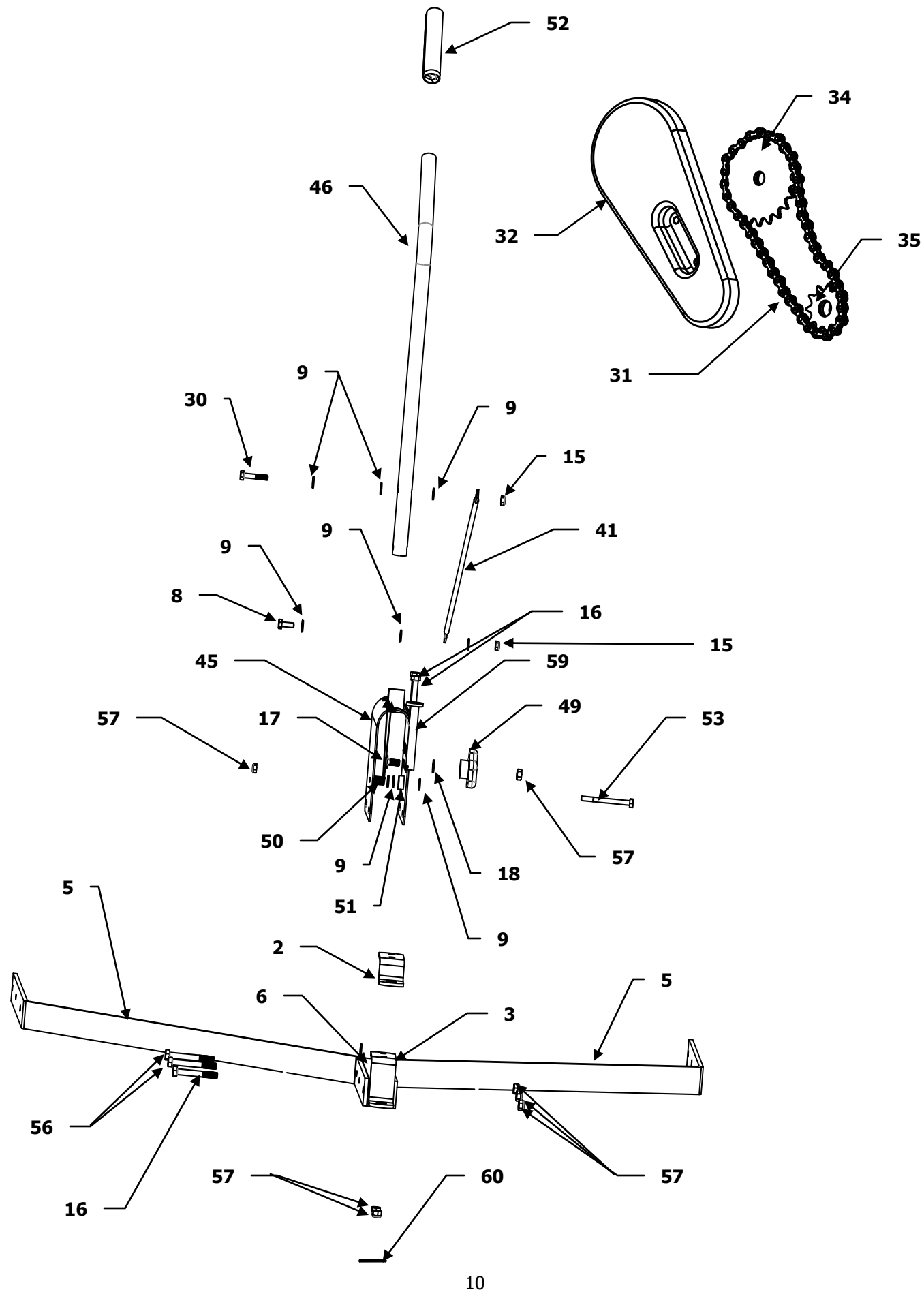
At Precision Products Inc. our goal is to deliver quality, value and outstanding service. If for any reason our product does not meet your expectations, please contact us and we will take care of any problem you may have with this unit.

When ordering replacement parts please have the model number, part description, part number, inspector number and date on box, available so that we can best serve you.

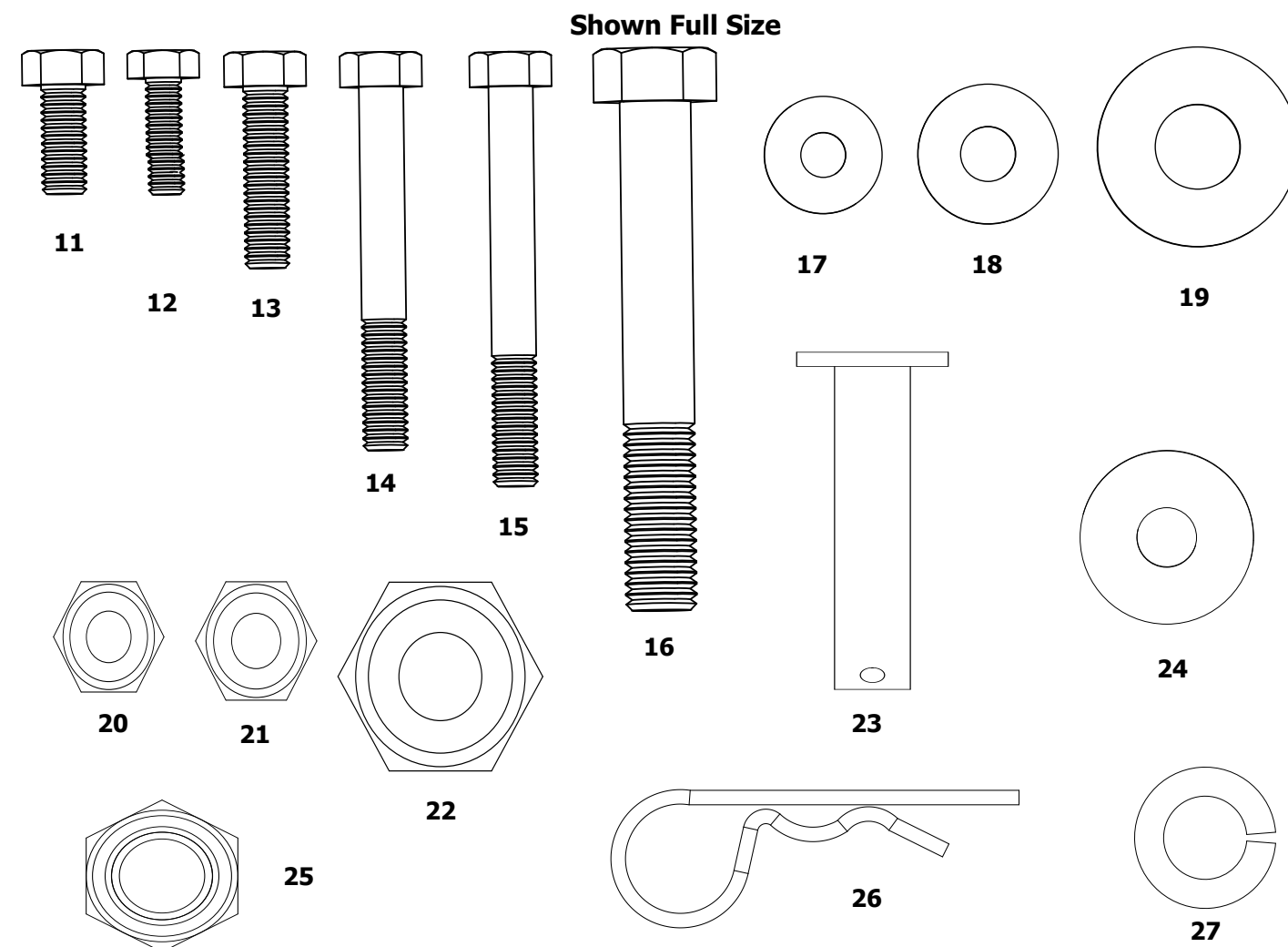
**1 (800) 225-5891**

**www.precisionprodinc.com**

**Precision Products Inc.  
316 Limit St.  
Lincoln IL 62656**



## Parts Used in Hardware Sack



Ref.	Qty.	Description
11	6	5/16" x 1" Hex Head Bolt
12	1	1/4" x 1" Hex Head Bolt
13	2	5/16" x 1-1/4" Hex Head Bolt
14	3	5/16" x 2-1/2" Hex Head Bolt
15	2	5/16" x 2-3/4" Hex Head Bolt
16	2	1/2" x 3-1/2" Hex Head Bolt
17	3	1/4" Flat Washer
18	14	5/16" Flat Washer
19	6	1/2" Flat Washer
20	1	1/4" Nylock Nut
21	14	5/16" Nylock Nut
22	2	1/2" Nylock Nut
23	1	1/2" x 2" Clevis Pin
24	2	5/16" Fender Washer
25	2	1/2" Jam Nut
26	1	#14 Hitch Pin Clip
27	2	1/2" Lock Washer

## Having Problems?

Installation Questions?

Missing Parts?

Replacement Parts?



**Don't go back to the store!**  
Let us help you!

Please call our helpful Customer Service Department  
Toll-Free at **(800) 225-5891** We will be happy to  
assist you.

**Assembly Instructions**

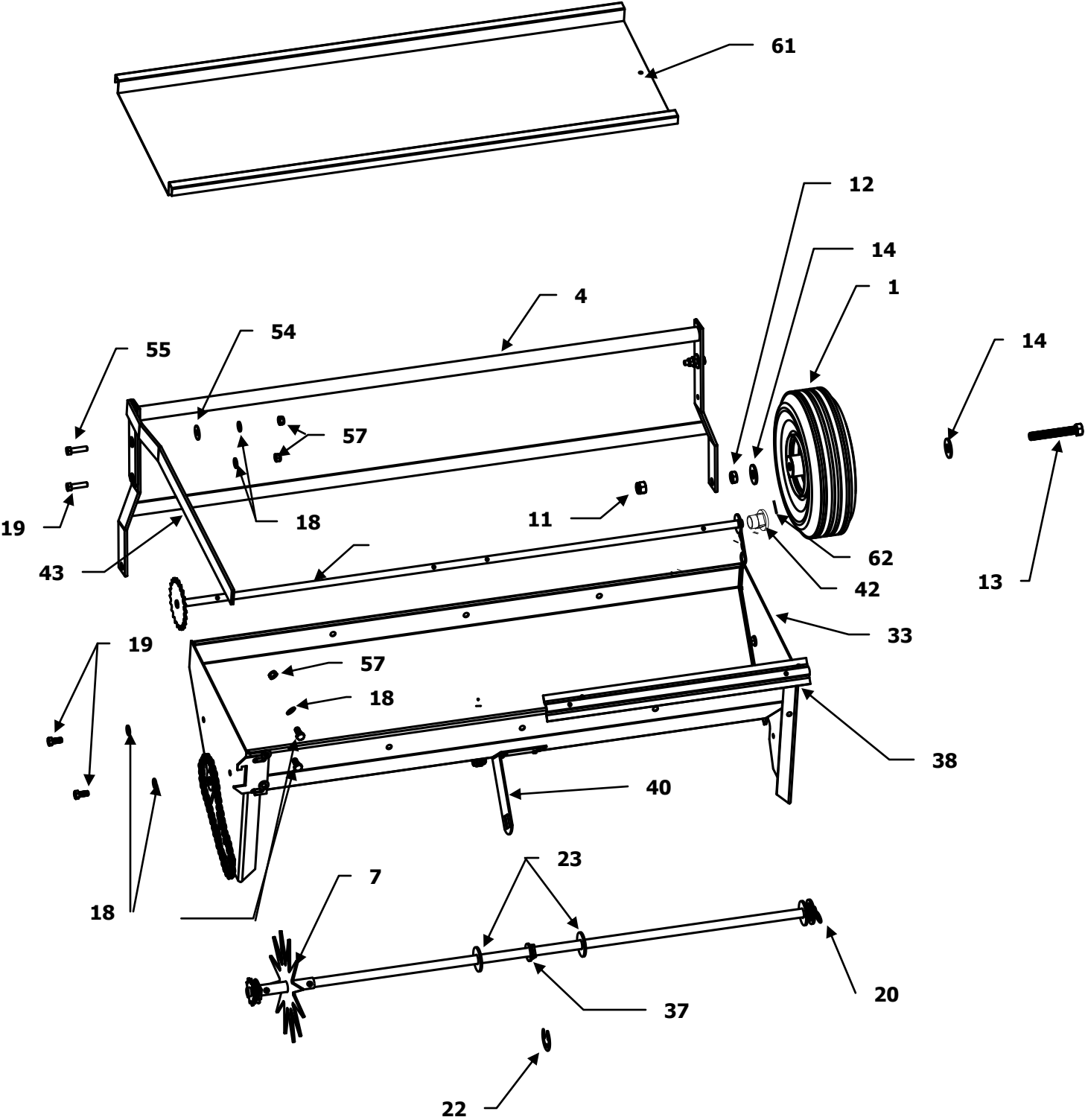
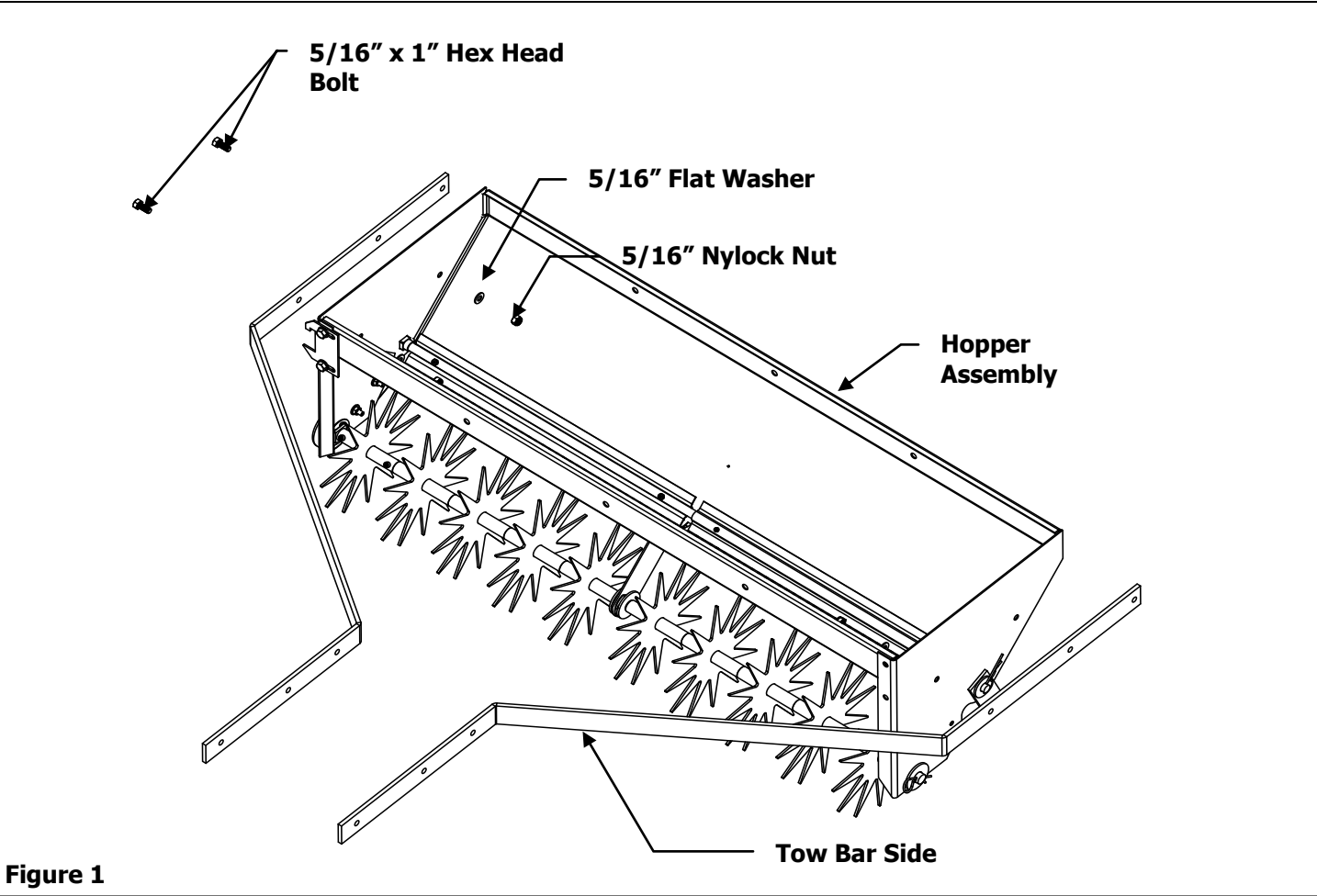
**Tools Required for Assembly**

- Minimum  
(1) 1/2" Wrench  
(1) 3/4" Wrench  
(1) Adjustable Wrench

**Remove from Carton**

Remove all parts and hardware packages from the carton. Lay out all parts and hardware and identify them using the illustrations on pages 2 and 3.

1. Both side bars are the same, attach one to each side of the hopper. You will need four of the 5/16" x 1" Hex Head Bolts, four 5/16" Flat Washers and four 5/16" Nylock Nuts. Push the bolt through the bars as shown in figure 1. There are two holes in each end of the hopper, line up bolts with the hole in the hopper. Attach a 5/16" Flat Washer and a 5/16" Nut, onto each bolt. See Figure 1.



Operation

Raising/Lowering your Spike Aerator/Drop Spreader Combo

- 1. Attach the unit to your tractor on a level surface using the provided hitch pin and hitch pin clip.
- 2. Once you enter the grassy surface, to lower the aerator for operation, move the handle to the side and push back to engage the spikes.
- 3. When complete, pull handle forward and lock to raise the unit and engage the wheels.

Using the Spreader/Spike Aerator

Aerating involves cutting small holes into the soil to create small reservoirs allowing air, fertilizer, and water to reach the grass or plant's roots. The following lawn preparation and aerator operation is recommended for optimal performance.

Mow the lawn and remove grass clippings prior to using the spike aerator. Your spike aerator should be attached to your rider or tractor on a level surface such as a driveway or garage floor with wheels engaged.

Once you are on the grass, have the tractor in the lowest forward speed and then disengage the wheels by moving the handle out of the locked position. This will allow the spikes to enter the ground. Speed can be increased as conditions permit. On slopes, always operate in an up and down direction only. Overlapping passes can be done to increase the density of the spike point pattern.

**DO NOT** make sharp turns while the spike points are engaged in the ground as this will damage the lawn. Weight can be placed on the top plate to increase the depth of spike point penetration. Weight may be needed for many applications, but **DO NOT** exceed the maximum weight of 175 lbs. The plate has been designed to hold concrete blocks. Secure the blocks with suitable binding material such as rubber tie down straps or wire. Not for use with Zero Turn Radius Mowers.

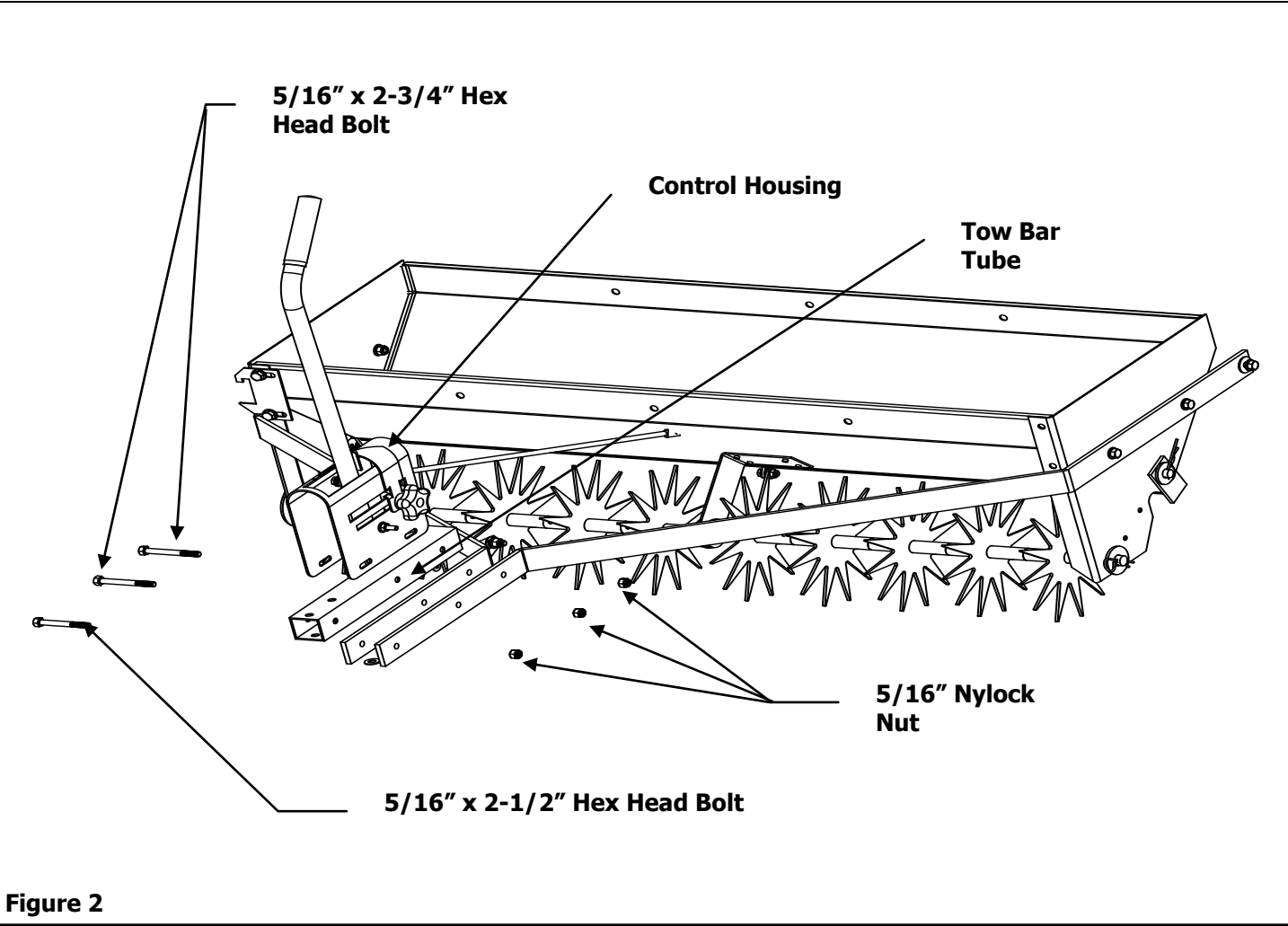
Maintenance

- 1. Before each use, check all nuts and bolts for tightness.
- 2. Clean after each use to prevent rust. The key to years of trouble-free service is to keep your unit clean and dry.
- 3. If rust should develop, sand lightly and then paint area with enamel.
- 4. Periodically check all moving parts for free movement and if necessary, lubricate with oil.
- 5. Sharpening spike points will allow you to maintain good soil penetration.

Storage

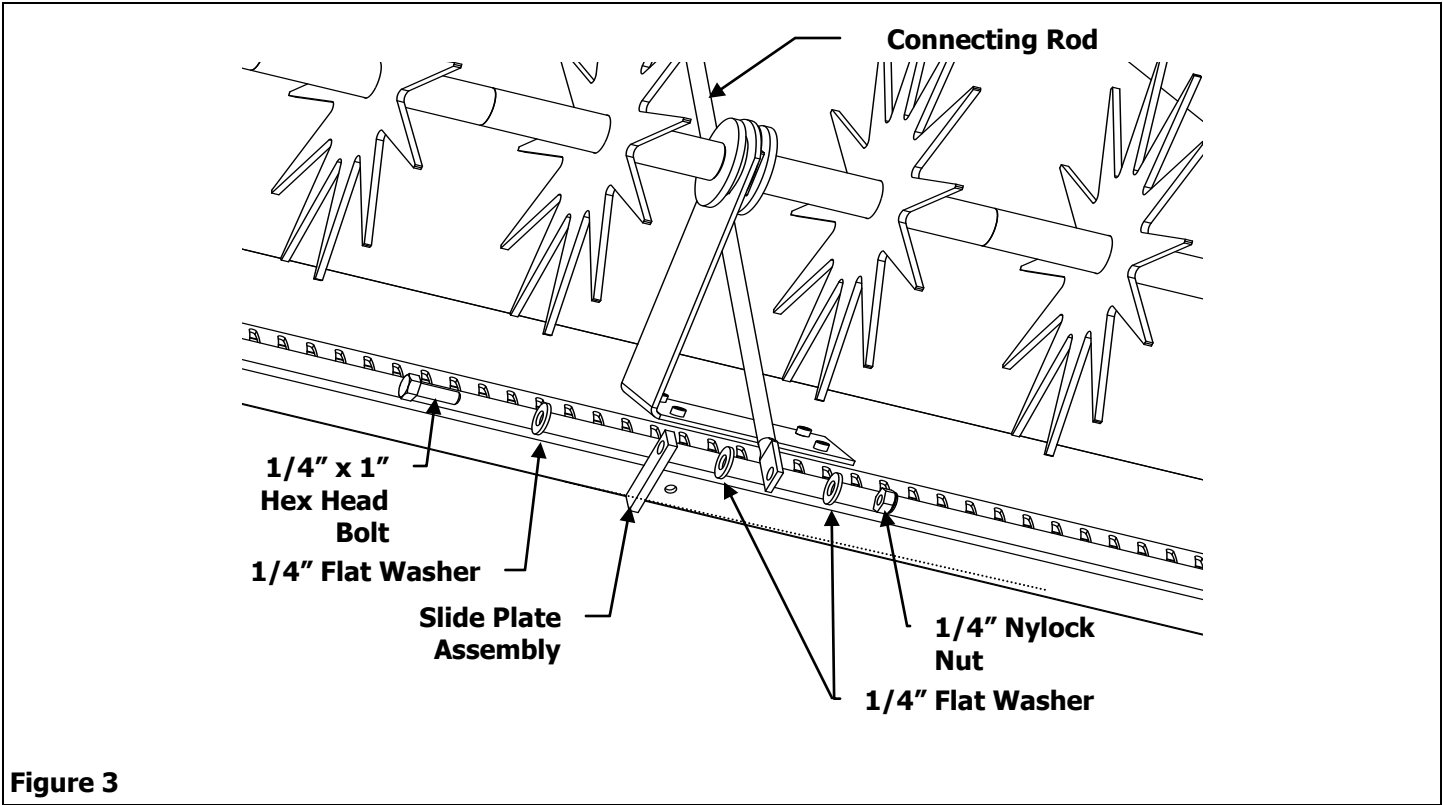
- 1. Be careful to store your spike aerator with the spikes towards the floor or a wall. Spikes are sharp and can cause considerable damage.
- 2. Always store your spike aerator in a dry area, and coat exposed metal with light oil when not in use.

- 2. Attach the Tow Bar Tube by placing the tube between the side bars. Insert a 5/16" x 2-1/2" Hex Head Bolt and push the bolt through the end hole of the Tow Bar Side and Tow Bar Tube. Place a 5/16" Nylock Nut onto each bolt. Attach the Control Housing by lining up the other two holes in the out outside of the Tow Bar Sides. Using two 5/16" x 2-3/4" Hex Head Bolts, and two 5/16' Nylock Nuts. Line up the holes in the housing, then secure with a Nylock Nut. (Do not tighten the Nylock Nuts until after you adjust the Control Housing. The Control Housing should come fully assembled with the Control Rod and Handle mounted to the housing as shown in Figure 2.



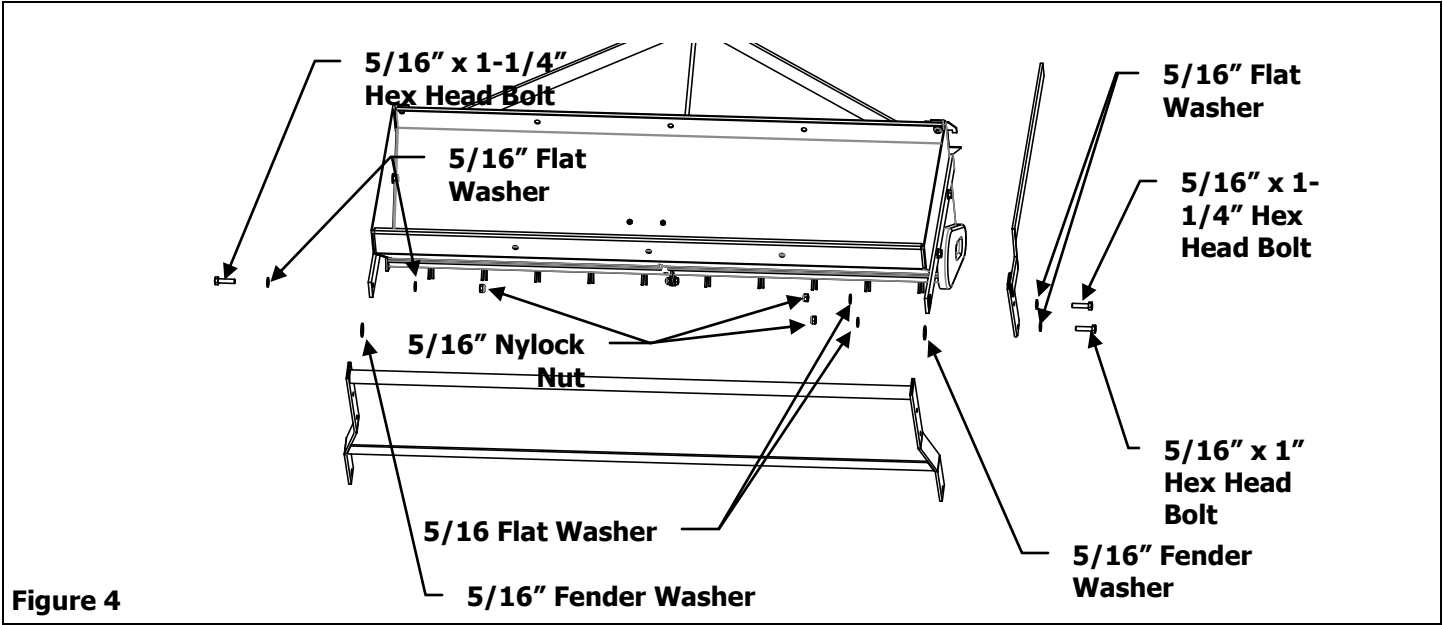
- 3. Do not adjust the Control Housing until after you have attached the Control Rod.

- 4. You will need to turn the unit over to attach the Control Rod to the Slide Plate Assembly. Take a 1/4" x 1" Hex Head Bolt, three 1/4" Flat Washers and a 1/4" Nylock Nut. Attach a 1/4" Flat Washer to the bolt. Line up the hole to the Control Rod insert bolt and add another 1/4" Flat Washer, insert the bolt through the Slide Plate, add one more 1/4" Flat Washer and secure with a 1/4" Nylock Nut. See Figure 3.

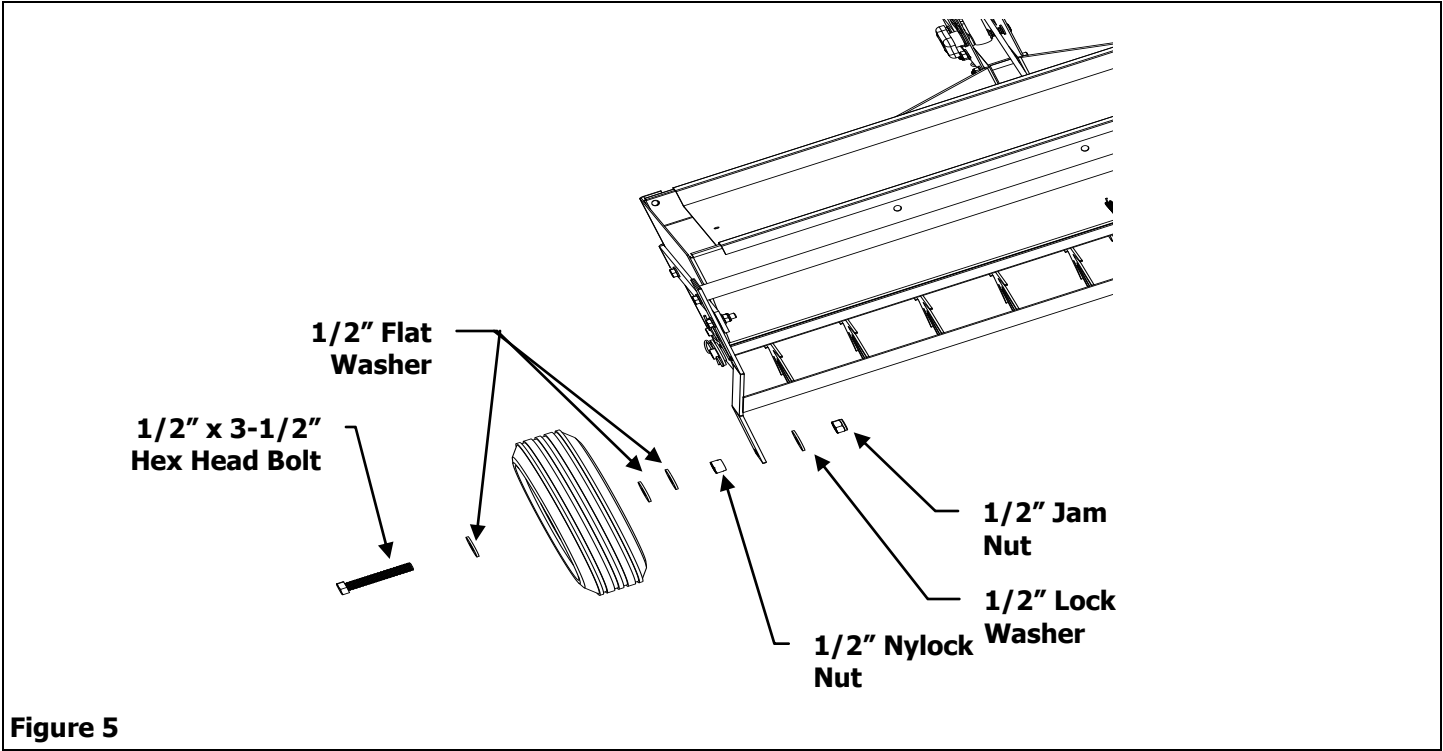


5. Turn the unit back over, once this is completed. Place the Handle in the fully closed notch, look and see if the holes into the hopper are covered. Then place the Handle in the fully open notch, make sure the holes are uncovered to adjust, slide the Control Housing forward or backwards and then tighten the 5/16" Nylock nut.

6. Place the Wheel Bracket over the outside of the Tow Bar Sides. Line up the top holes with the holes in the end of Tow Bar Sides and the top hole in the Engagement Bar as shown in Figure 4. Use a 5/16" x 1-1/4" Hex Head Bolt with a 5/16" Flat Washer, push bolt through the Wheel Engagement Bar and the Wheel Bracket, add a 5/16" Fender Washer and then push through the Tow Bar Side, add one more 5/16" Flat Washer and then secure with a 5/16" Nylock Nut. Use a 5/16" x 1" Hex Head Bolt with a 5/16" Flat Washer to go through the bottom hole of the Engagement Bar and Wheel Bracket. Add a 5/16" Flat Washer and secure with a 5/16" Nylock Nut on the inside. On the right side use a 5/16" x 1" Hex Head Bolt with a 5/16" Flat Washer, push through Wheel Bracket and add a 5/16" Fender Washer, then push bolt through Tow Bar Side. Add a 5/16" Flat Washer and secure with a 5/16" Nylock Nut. See Figure 4.



7. Attach Wheels to the Wheel Bracket, using two 1/2" x 3-1/2" Hex Head Bolts, six 1/2" Flat Washers, two 1/2" Nylock Nuts and two 1/2" Jam Nuts. Place a 1/2" Flat Washer on a 3-1/2" Hex Head Bolt, then place the Wheel on the bolt, add two more 1/2" Flat Washer, then screw on the Nylock Nut. Place the bolt through the hole in the Wheel Bracket and then secure with a 1/2" Lock Washer and a 1/2" Jam Nut. See Figure 5.



8. To attach the Clevis Plates to the Tow Bar Attachment, you will need two 5/16" X 2-1/2" Hex Head Bolts, four and two 5/16" Nylock Nuts. Place the Clevis Plates as shown in Figure 6. Push the bolts through the holes in the Clevis Plate and Tow Bar add a 5/16" Nylock Nut to each bolt. Insert the 1/2" x 2" Clevis Pin into the first hole and secure with a #14 Hitch Pin Clip.

