

How To Use The McDaniel Metals CATALOG and PRODUCT GUIDE

1

●

ACCESSORY
SELECTION TABLES

section

1

1

page

2

●

CURBS

section

2

1

page

3

●

ECONOMIZERS

section

3

1

page

4

●

CONCENTRICS

section

4

1

page

5

●

DAMPERS/MISC.

section

5

1

page

6

●

FILTER HOUSINGS

section

6

1

page



McDANIEL METALS McDANIEL METALS McDANIEL METALS

"Hello, and Thank You from McDaniel Metals"

2004 - 2005 •

Please note the following:

- 1 New PGC -, PCC - and GPG -, APG - Accessories**
- 2 PGB, PHB Accessories Obsolete**
- 3 Filter Bases and Other Accessories Available**
- 4 New GPG -, APG - Selection Table**
- 5 Accessory Description, Weights And UPS Suitability**

If you have any questions or ideas on how we may better serve you,
please do not hesitate to call me.

Sincerely,



Bill McDaniel
Owner/McDaniel Metals

ACCESSORY SELECTION TABLE AND CHASSIS IDENTIFICATION FOR GOODMAN 7 1/2 - 10 TON PACKAGE ROOFTOP UNITS

MODEL	DESCRIPTION	CHASSIS	
		#5A	#5B
PGED090/102-5A	DOWNFLOW ECONOMIZER	.	
PGED120/180-5A	DOWNFLOW ECONOMIZER		.
PGC-5	ROOF CURB	.	.
PGP-5	4' PLENUM DROPS WITH CAPS	.	.
PGEH090/102-5	HORIZONTAL ECONOMIZER	.	
PGEH120/180-5	HORIZONTAL ECONOMIZER		.
SQRP090-5	SQUARE TO ROUND CONVERTER	.	
CDK90	CONCENTRIC CONVERTER	.	
CDK120	CONCENTRIC CONVERTER		.
PGCT120-5	CONCENTRIC TRANSITION		.
PGHDK090/102-5A	HORIZONTAL DUCT KIT	.	
PGHDK120/180-5A	HORIZONTAL DUCT KIT		.

ACCESSORY SELECTION TABLE AND CHASSIS IDENTIFICATION FOR GOODMAN 7 1/2 - 15 TON PACKAGE ROOFTOP UNITS (CON'T)

	CHASSIS #5A	CHASSIS #5B
		PGB120XXX
	PGB090XXX	PGB150XXX
PGB/PCB SERIES	PGB102XXX	PGB180XXX
	PCB090	PCB120
	PCB102	PCB150
		PCB180

XXX - ALL HEATING INPUTS

	CHASSIS #5A	CHASSIS #5B
PGC-/PCC- SERIES	PGC090XXX	PGC120XXX
	PGC102XXX	PCC120XXX
	PCC090XXX	
	PCC102XXX	

ACCESSORY SELECTION TABLE FOR GOODMAN/AMANA GPG-/APG- PACKAGE ROOFTOP UNITS

GPG CHASSIS SIZES

SMALL	MEDIUM	LARGE
GPG1024XXX1A	GPG1036XXX1A	GPG1036XXX3A
GPG1030XXX1A	GPG1042XXX1A	GPG1048XXX1A
GPG1224XXX1A	GPG1236XXX1A	GPG1048XXX3A
GPG1230XXX1A	GPG1242XXX1A	GPG1060XXX1A
	GPG1324XXX1A	GPG1060XXX3A
	GPG1330XXX1A	GPG1248XXX1A
	GPG1336XXX1A	GPG1260XXX1A
		GPG1342XXX1A
		GPG1348XXX1A
		GPG1360XXX1A

XXX - ALL HEAT INPUTS

APG CHASSIS SIZES

SMALL	MEDIUM	LARGE
APG1024XXX1A	APG1036XXX1A	APG1036XXX3A
APG1030XXX1A	APG1042XXX1A	APG1048XXX1A
APG1224XXX1A	APG1236XXX1A	APG1048XXX3A
APG1230XXX1A	APG1242XXX1A	APG1060XXX1A
	APG1324XXX1A	APG1060XXX3A
	APG1330XXX1A	APG1248XXX1A
	APG1336XXX1A	APG1260XXX1A
		APG1342XXX1A
		APG1348XXX1A
		APG1360XXX1A

XXX - ALL HEAT INPUTS

ACCESSORIES

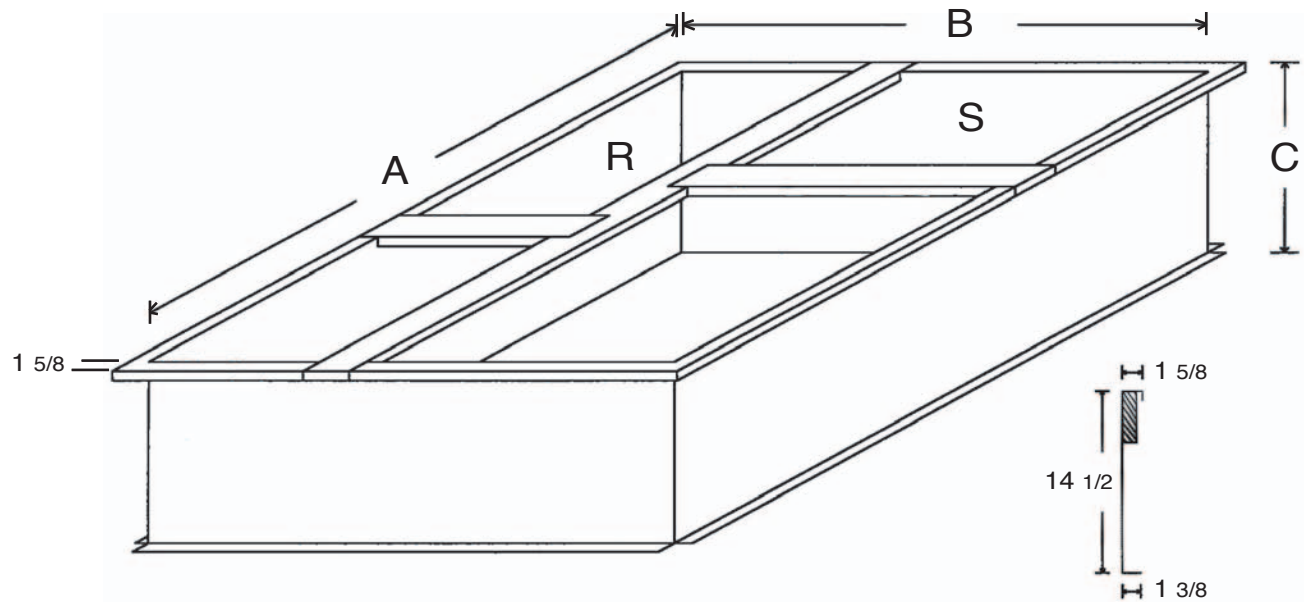
	SMALL	MEDIUM	LARGE
ROOF CURB	PGC101/102/103	PGC101/102/103	PGC101/102/103
DOWNFLOW ECONOMIZER	PGED101/102	PGED101/102	PGED103
HORIZONTAL ECONOMIZER	PGEH101/102	PGEH101/102	PGEH103
DOWNFLOW MANUAL DAMPER	PGMDD101/102	PGMDD101/102	PGMDD103
HORIZONTAL MANUAL DAMPER	PGMDH101	PGMDH102	PGMDH103
FILTER RACK	PGFR101/102/103	PGFR101/102/103	PGFR101/102/103
DOWNFLOW SQUARE TO ROUND	SQRP101/102	SQRP101/102	SQRP103
HORIZONTAL SQUARE TO ROUND	SQRP101/102	SQRP101/102	SQRP103
CONCENTRIC DUCT KIT	CDK1-2	CDK3	CDK3

MODEL #	DESCRIPTION	WEIGHT
PGC-5	ROOF CURB	109*
PGP-5	4" PREMIUM DRAIN	13*
PGED 090/102-5A	DOWNFLOW ECONOMIZER	78
PGED 120/180-5A	DOWNFLOW ECONOMIZER	101
PGEH 090/102-5	HORIZONTAL ECONOMIZER	90
PGEH 120/180-5	HORIZONTAL ECONOMIZER	115
PGC101/102/103	ROOF CURB	60*
PGED101/102	DOWNFLOW ECONOMIZER	50
PGED103	DOWNFLOW ECONOMIZER	52
PGEH101/102	HORIZONTAL ECONOMIZER	45
PGEH103	HORIZONTAL ECONOMIZER	50
PGMDD101/102	DOWNFLOW FRESH AIR DAMPER	9*
PGMDD103	DOWNFLOW FRESH AIR DAMPER	10*
PGMDH101	HORIZONTAL FRESH AIR DAMPER	17*
PGMDH102	HORIZONTAL FRESH AIR DAMPER	19*
PGMDH103	HORIZONTAL FRESH AIR DAMPER	23*
PGMDMD101/102	DOWNFLOW MOTORIZED FRESH AIR DAMPER	21*
PGMDMD103	DOWNFLOW MOTORIZED FRESH AIR DAMPER	22*
PGMDMH101	HORIZONTAL MOTORIZED FRESH AIR DAMPER	30*
PGMDMH102	HORIZONTAL MOTORIZED FRESH AIR DAMPER	32*
PGMDMH103	HORIZONTAL MOTORIZED FRESH AIR DAMPER	35*
SQRPG101/102	DOWNFLOW SQUARE TO ROUND ADAPTER	9*
SQRPG103	DOWNFLOW SQUARE TO ROUND ADAPTER	9*
SQRPGH101/102	HORIZONTAL SQUARE TO ROUND ADAPTER	7*
SQRPGH103	HORIZONTAL SQUARE TO ROUND ADAPTER	7*
PGFR101/102/103	DOWNFLOW FILTER RACK	5*
CDK 1-2	CONCENTRIC DUCT KIT	35*
CDK-3	CONCENTRIC DUCT KIT	35*
CDK 90	CONCENTRIC DUCT KIT	55
CDK 120	CONCENTRIC DUCT KIT	160
CDK 150	CONCENTRIC DUCT KIT	190
CDK 180	CONCENTRIC DUCT KIT	225
PGHDK090/102-5A	HORIZONTAL DUCT KIT	37*
PGHDK120/180-5A	HORIZONTAL DUCT KIT	40*
SQRPG090-5	SQUARE TO ROUND CONVERTER	25*
PGCT-5	CONCENTRIC TRANSITION	12



* CAN BE SHIPPED BY UNITED PARCEL SERVICE

ROOF CURBS FOR GOODMAN / AMANA GPG/APG024-060 PACKAGE UNITS



	A	B	C	RETURN	SUPPLY
PGC101/102/103	46 1/4	39 3/8	14 1/2	12 1/2 X 23	15 X 22 1/2

DIMENSIONS ARE I.D.

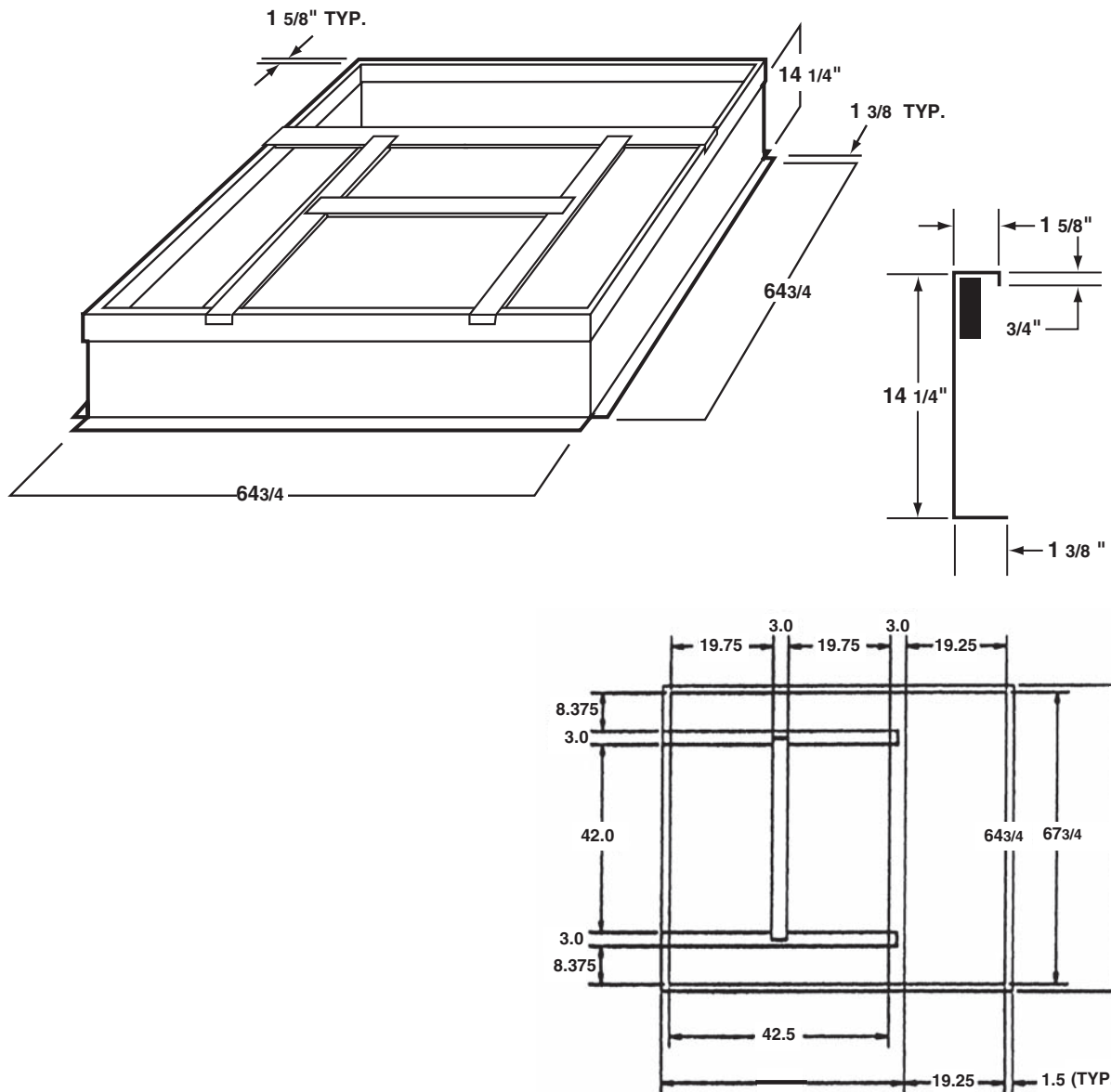
ROOF CURB

Constructed of minimum, 18 gauge galvanized steel
Features a 1" x 4" wood runner permanently attached to the top of the curb.
Shipped unassembled with all hardware and instructions necessary for installation.



NOTE: DUCT SIZE SHOULD BE 3/8" LESS THAN O.D. OF DUCT OPENING.

PGC-5 ROOF CURB FOR GOODMAN PGC(PCC) 090-120 PACKAGE UNITS



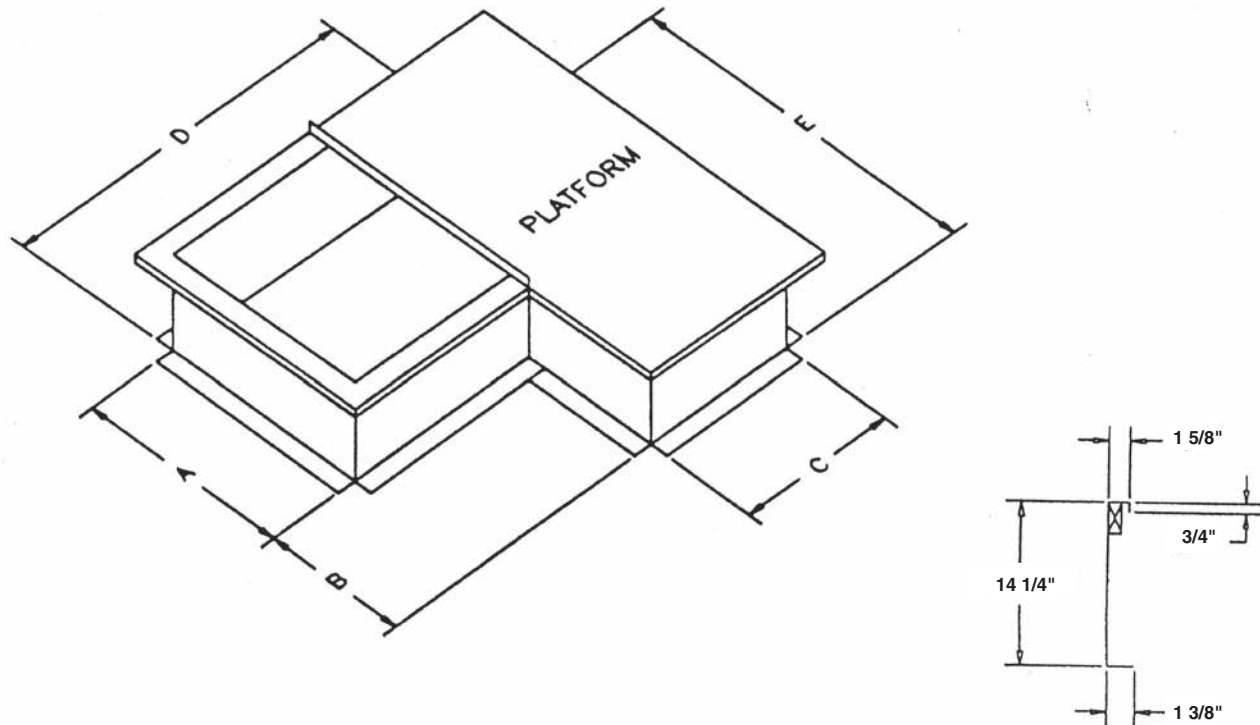
SPECIFICATIONS:

- 1) Constructed of 16 gauge galvanized steel.
- 2) Features a 1" x 4" wood runner permanently attached to the top of the curb.
- 3) Curb is square, duct supports fit in any direction. Unit can be positioned on curb in four directions.
- 4) Shipped unassembled with all hardware and instructions necessary for installation.



NOTE: DUCT SIZE SHOULD BE 1/2" LESS THAN O.D. OF DUCT OPENING.
RECOMMENDED DUCT SIZE: 41-1/2" X 19-1/4".

CURB & PLATFORM FOR GOODMAN PCK/PHK 024-060



MODEL	A	B	C	D	E	PLATFORM
PCCP-1	24.625	21.5	18.25	47.375	45.75	48.75 X 21
PCCP 2-3	30.375	22.5	26.25	55 3/8	52.5	55.5 X 29

ROOF CURB

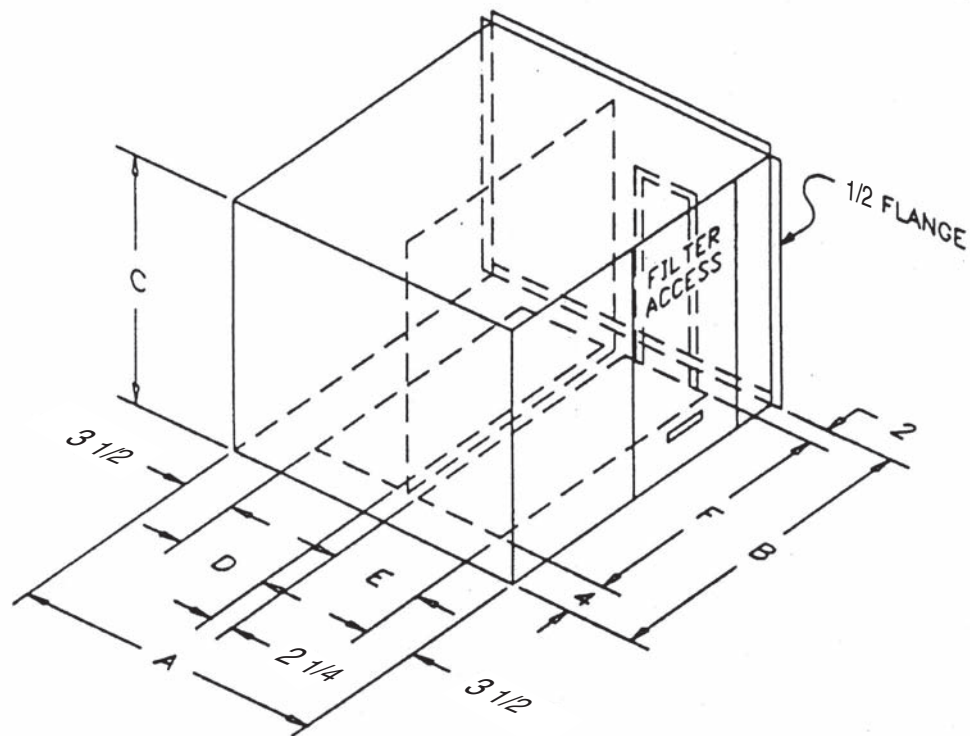
Constructed of minimum, 18 gauge galvanized steel

Features a 1" x 4" wood runner permanently attached to the top of the curb.

Shipped unassembled with all hardware and instructions necessary for installation.

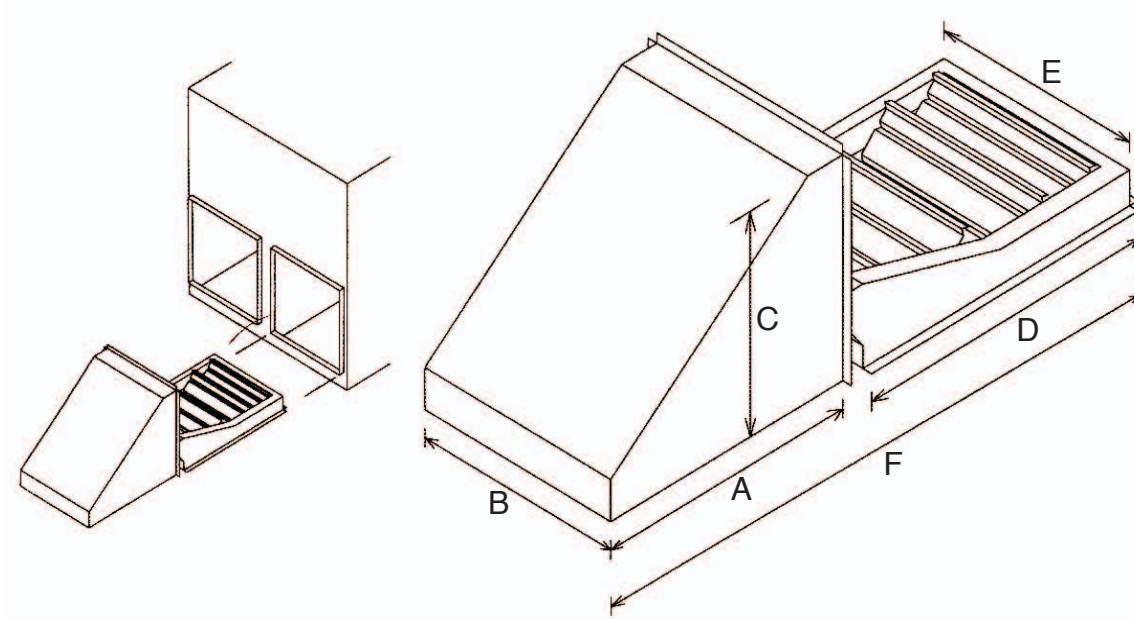
**PCP-1, PCP 2-3
PLENUM FOR PCK & PHK 024-060**

APPLICATION: For Use With PCCP Curb & Platform



MODEL	A	B	C	D	E	F	FILTER
PCP-1	28.5	30	25.75	8	11.5	24	16 X 20
PCP 2-3	34.5	30	30	11	14.5	24	20 X 25

DOWNFLOW ECONOMIZER FOR GOODMAN / AMANA GPG -, APG - 024-060 PACKAGE UNITS



MODEL	A	B	C	D	E	F
PGED101/102	20	16.25	16	23.5	12.5	45.75
PGED103	20	16.25	18	23.5	12.5	45.75

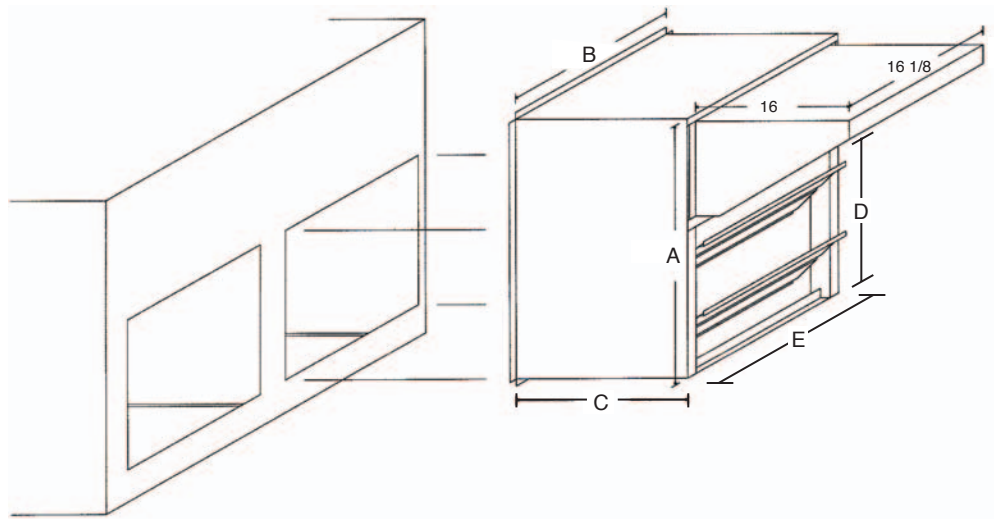
SPECIFICATIONS:

1. Fully modulating Economizer Package with 24 VAC damper motor and spring return.
2. Provides up to 100% fresh air.
3. Fully assembled and factory wired.
4. Integral barometric relief. (25%)
5. Painted to match unit.
6. Adjustable enthalpy type.
7. Adjustable mixed air temperature and minimum fresh air.
8. All installation hardware and instructions included.

**PGEH-101, -102, -103
HORIZONTAL ECONOMIZER
FOR GOODMAN / AMANA GPG- ,APG- 024 - 60 PACKAGE UNITS**

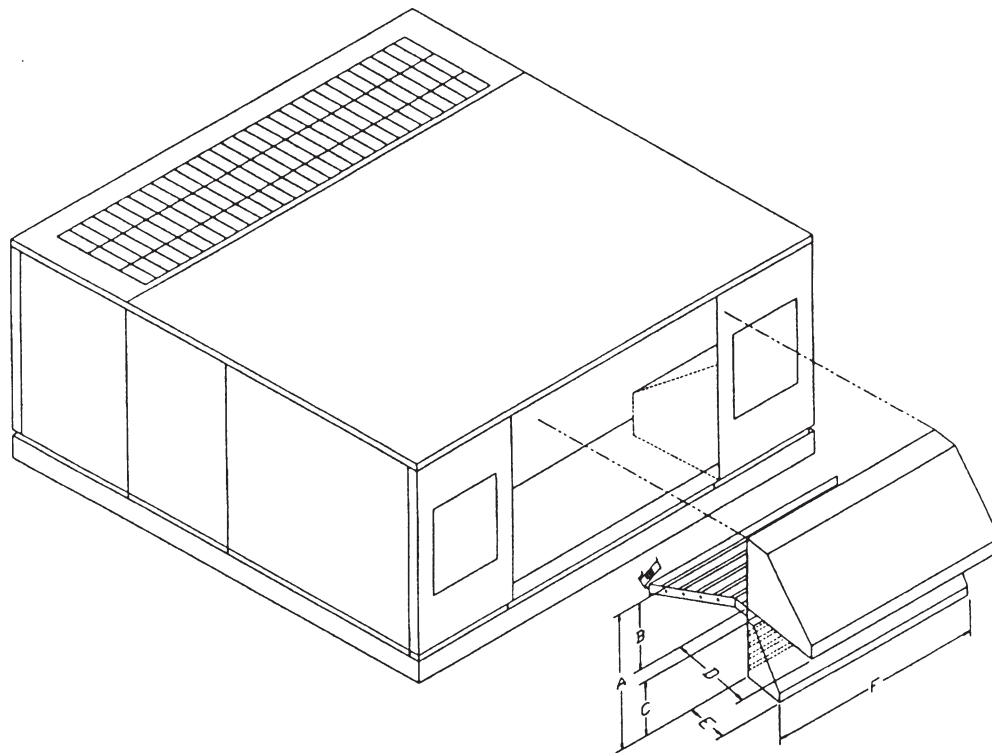
SPECIFICATIONS:

1. Fully modulating spring return 24 VAC motor.
2. Provides up to 100% fresh air.
3. Fully assembled and factory wired.
4. Adjustable enthalpy type.
5. Adjustable mixed air temperature and minimum fresh air.
6. All installation hardware and instructions included.



	A	B	C	D	E	FILTER
PGEH-101/102	25 1/4	18 1/8	18	13 3/4	16 1/8	16 x 25 x 1
PGEH-103	35 1/4	18 1/8	18	18 1/4	16 1/8	16 x 25 x 1

**PGED090/102-5A & PGED120/180-5A
DOWNFLOW ECONOMIZERS
FOR GOODMAN PGC(PCC) 090-120 PACKAGE UNITS**

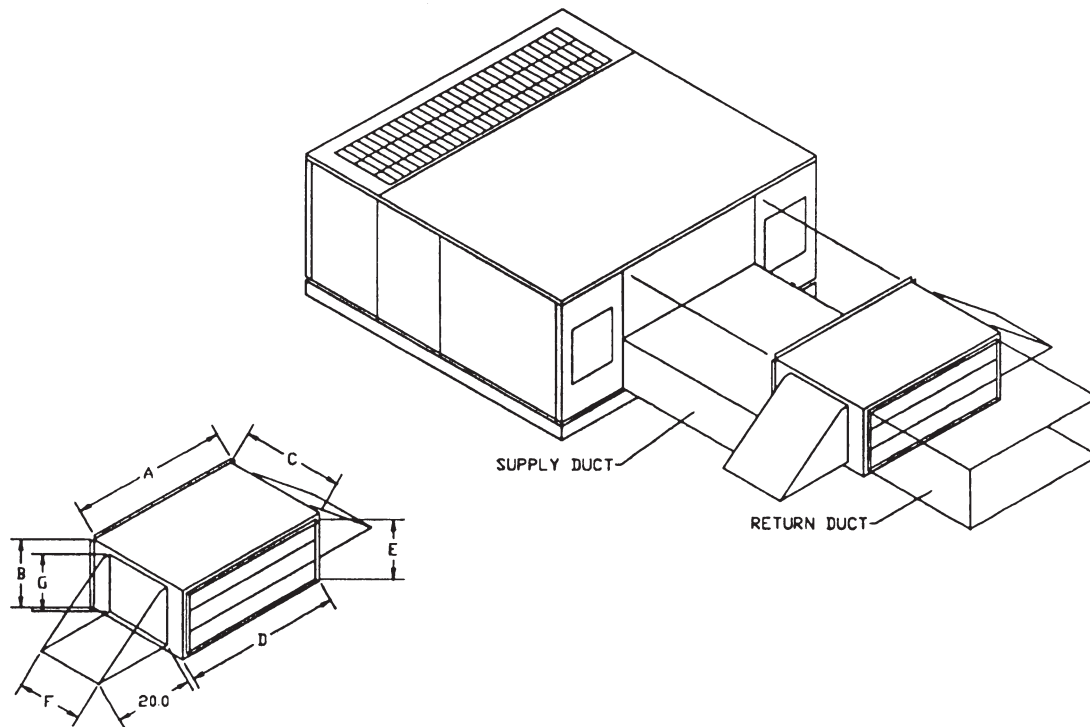


MODEL	A	B	C	D	E	F
PGED090/102-5A	32	15.625	13.375	16	8	40
PGED120/180-5A	48	21.875	23.250	19	10.375	40

SPECIFICATIONS:

1. Fully modulating Economizer Package with 24 VAC damper motor and spring return.
2. Provides up to 100% fresh air.
3. Fully assembled and factory wired.
4. Integral barometric relief. (100%)
5. Painted to match unit.
6. Adjustable enthalpy type.
7. Adjustable mixed air temperature and minimum fresh air.
8. Plugs into receptacle in unit.
9. Replaces center access panel.
10. All installation hardware and instructions included.

**PGEH090/102-5 & PGEH120/180-5
HORIZONTAL ECONOMIZERS
FOR GOODMAN PGC(PCC) 090-120 PACKAGE UNITS**



MODEL	A	B	C	D	E	F	G
PGEH090/102-5	40.125	17.5	26	38.125	15.5	18	15
PGEH120/180-5	40.125	25.75	26	38.125	23.375	18	18

SPECIFICATIONS:

1. Fully modulating Economizer Package with 24 VAC damper motor and spring return.
2. Provides up to 100% fresh air.
3. Fully assembled and factory wired.
4. Adjustable enthalpy type.
5. Adjustable mixed air temperature and minimum fresh air.
6. Plugs into receptacle in unit.
7. Replaces center access panel after unit has been converted to horizontal discharge.
8. All installation hardware and instructions included.

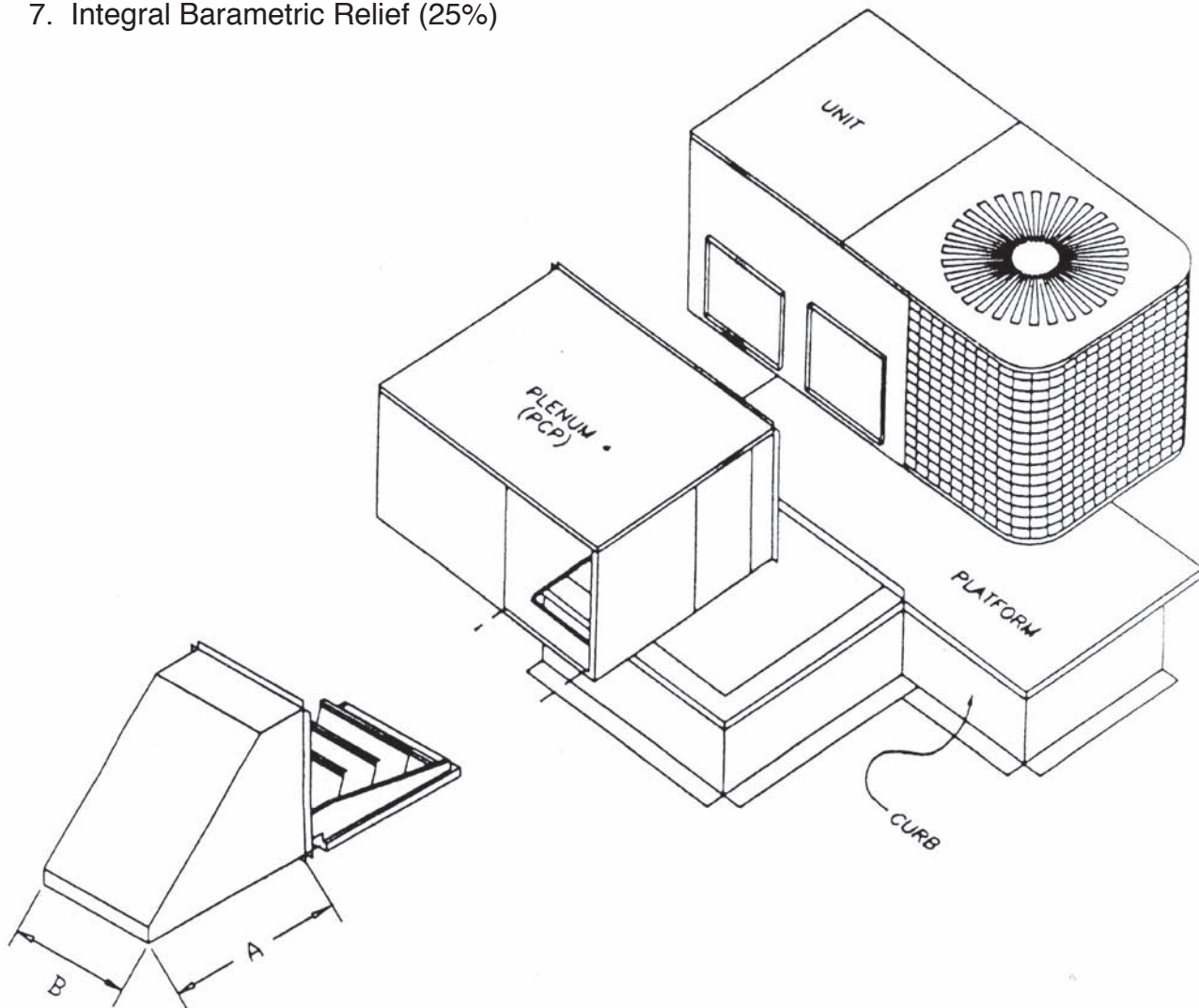


NOTE: Requires Horizontal Conversion Kit (PGHDK).

PCE-1, PCE 2-3 ECONOMIZER FOR GOODMAN PCK/PHK 024-060 UNITS

SPECIFICATIONS:

1. Fully modulating spring return 24 VAC motor.
2. Provides up to 100% fresh air.
3. Adjustable enthalpy type.
4. Adjustable mixed air temperature and minimum fresh air.
5. All installation hardware and instructions included.
6. Fully assembled and factory wired.
7. Integral Barometric Relief (25%)

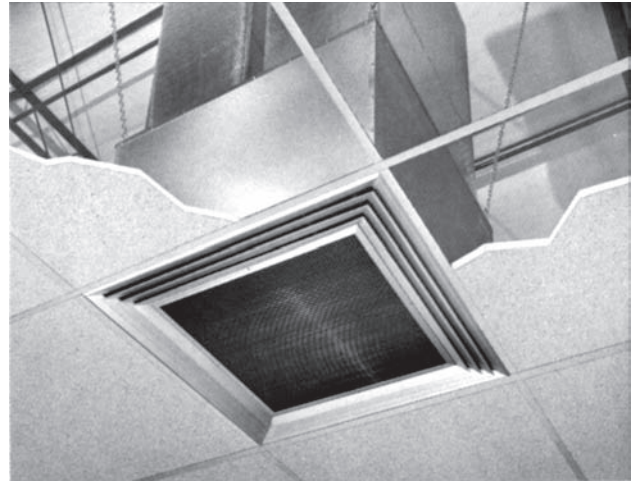


MODEL	A	B
PCE-1	20	143/4
PCE 2-3	20	183/4

510 SERIES - FLUSH MOUNT CONCENTRIC DIFFUSER SYSTEM



LIGHT COMMERCIAL
"T" BAR CEILING



COMMERCIAL
"T" BAR CEILING

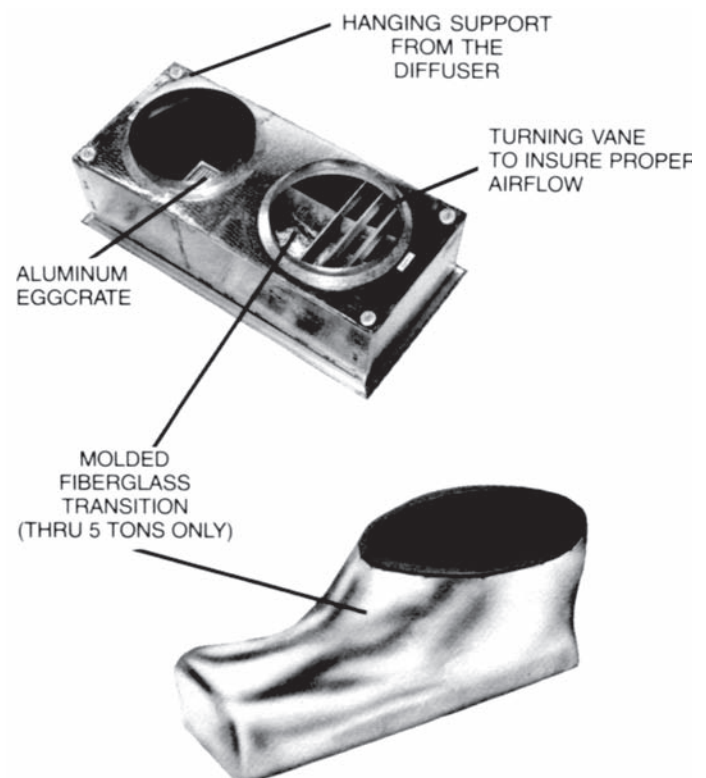
510 SERIES concentric diffuser systems are designed to provide a single point air distribution system. The systems may be used with either a "T-Bar" ceiling or a plaster ceiling.

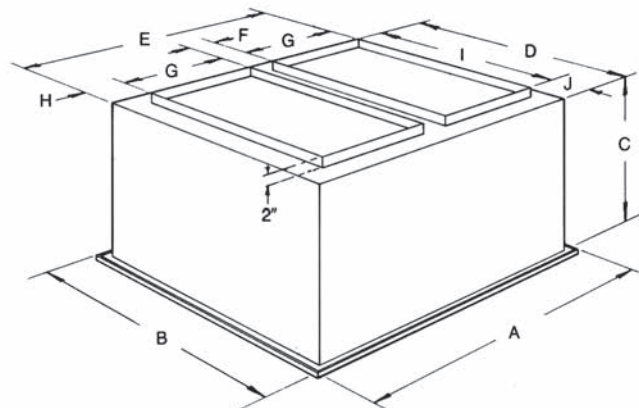
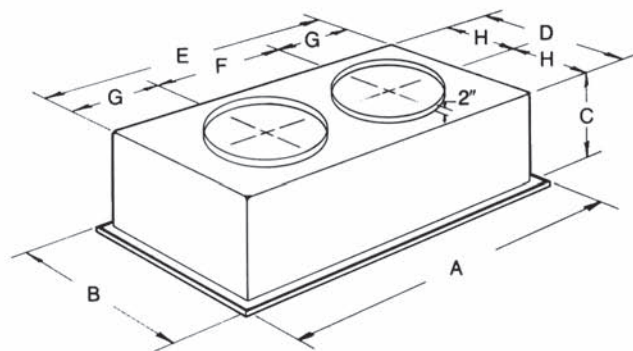
Standard features include:

1. All aluminum diffuser with aluminum return air eggcrate.
2. Built-in Anti-Sweat gasket.
3. Molded Fiberglass Transition (through five tons).
4. Built-in hanging supports.
5. Diffuser box constructed of fiberglass ductboard (through 7.5 tons) or sheetmetal.

Standard benefits include:

1. Even four (4) way airflow.
2. Lightweight design.
3. Factory assembled and sealed.
4. Guaranteed not to "sweat".
5. Guaranteed not to recirculate air flow (short cycle).
6. Return air eggcrate is easily removed.
7. Units are fully insulated (both supply and return).

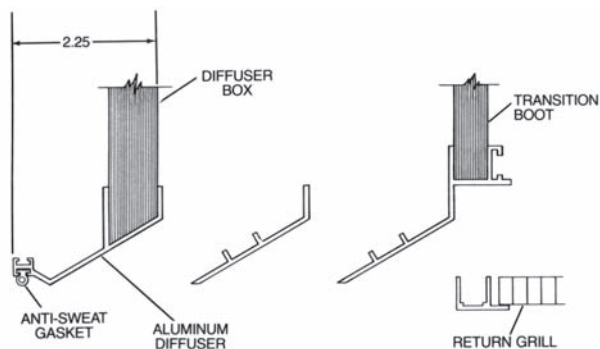




DIMENSIONAL DATA

MODEL NO	A	B	C	D	E	F	G	H	I	J	DUCT SIZE
CDK 1-2-510	47 ^{5/8}	23 ^{5/8}	13 ^{1/2}	21	45	22 ^{1/2}	11 ^{1/4}	10 ^{1/2}	—	—	16RD
CDK 3-510	47 ^{5/8}	23 ^{5/8}	13 ^{1/2}	21	45	22 ^{1/2}	11 ^{1/4}	10 ^{1/2}	—	—	18RD
CDK 90-510	47 ^{5/8}	29 ^{5/8}	16 ^{5/8}	27	45	22 ^{1/2}	11 ^{1/4}	13 ^{1/2}	—	—	20RD

MODEL NO	A	B	C	D	E	F	G	H	I	J	DUCT SIZE
CDK 120-510	47 ^{5/8}	35 ^{5/8}	23 ^{1/4}	33	45	4 ^{1/2}	18	2 ^{1/4}	28	2 ^{1/2}	18x28
CDK 150-510	47 ^{5/8}	41 ^{5/8}	29 ^{1/4}	39	45	4 ^{1/2}	18	2 ^{1/4}	32	3 ^{1/4}	18x32
CDK180-510	47 ^{5/8}	47 ^{5/8}	29 ^{1/4}	45	45	4 ^{1/2}	18	2 ^{1/4}	36	4 ^{1/2}	18x36
CDK 140-510	59 ^{5/8}	59 ^{5/8}	35 ^{1/4}	57	57	4 ^{1/2}	24	2 ^{1/4}	48	4 ^{1/2}	24x48
CDK 300-510	59 ^{5/8}	59 ^{5/8}	35 ^{1/4}	57	57	4 ^{1/2}	24	2 ^{1/4}	54	1 ^{1/2}	24x54



TYPICAL SPECIFICATIONS

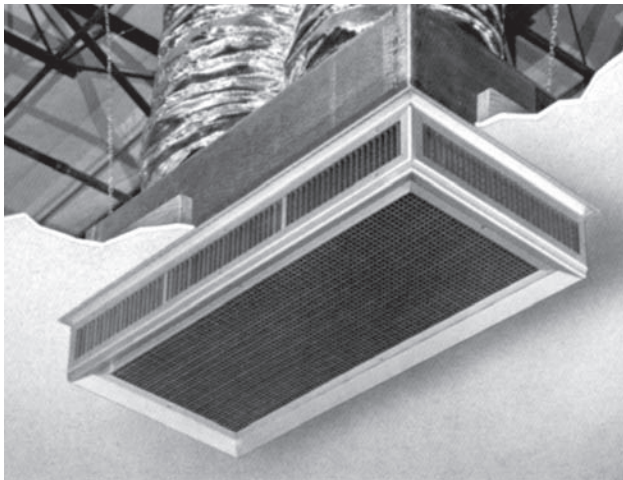
Furnish and install McDaniel Metals, Inc. "510 SERIES"concentric diffuser systems. The system shall consist of an aluminum supply diffuser with an aluminum eggcrate return. It shall also have a permanent (not adhesive) anti-sweat gasket and hanging supports. All units that are five (5) tons and smaller shall have a molded fiberglass interior transition.

510 SERIES CONCENTRIC DIFFUSER ENGINEERING DATA

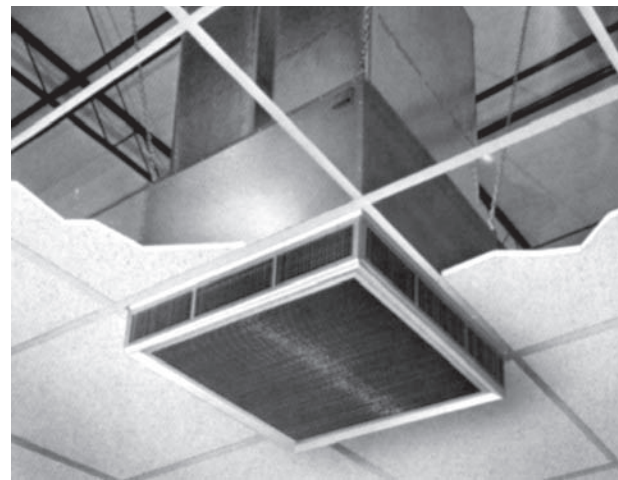
PART No	CFM	Statistic Pressure	Throw Feet	Neck Vel.	Jet Vel.	Noise Level
CDK 1-2 510	600	.09	10-14	234	417	18
	800	.11	12-18	313	556	20
	1000	.14	15-20	391	694	20
	1200	.17	16-22	469	833	25
	1400	.20	17-24	547	972	30
CDK 3-510	1000	.14	15-20	391	694	20
	1200	.17	16-22	469	833	25
	1400	.20	17-24	547	972	30
	1600	.24	18-25	625	1111	30
	1800	.30	20-28	703	1250	35
	2000	.36	21-29	781	1389	40
	2200	.40	22-30	859	1528	40
CDK 90-510	2600	.17	19-24	663	1294	30
	2800	.20	20-28	714	1393	35
	3000	.25	21-29	765	1492	35
	3200	.31	22-29	816	1592	40
	3400	.37	22-30	867	1692	40
CDK 120-510	3600	.17	22-29	844	1646	35
	3800	.18	22-30	891	1737	40
	4000	.21	24-33	938	1829	40
	4200	.24	26-35	985	1920	40
	4400	.27	28-37	1032	2011	40
CDK 150-510	4600	.31	25-34	922	1795	40
	4800	.32	26-35	962	1873	40
	5000	.34	27-36	1002	1951	40
	5200	.36	30-39	1043	2029	45
	5400	.39	32-41	1083	2107	45
CDK 180-510	5600	.36	28-37	1000	2082	45
	5800	.39	29-38	1036	2156	45
	6000	.42	40-50	1071	2230	45
	6200	.46	42-51	1107	2308	50
	6400	.50	43-52	1143	2379	50
CDK 240-510	6600	.54	45-56	1179	2454	50
	7200	.39	26-35	996	2093	45
	7400	.41	28-37	1024	2151	45
	7600	.43	29-38	1051	2209	45
	7800	.47	40-50	1079	2276	45
	8000	.50	42-51	1107	2326	50
	8200	.53	43-52	1134	2384	50
	8400	.56	44-54	1162	2442	50
	8600	.59	46-57	1189	2500	50
	8800	.63	48-59	1217	2558	50
CDK 300-510	9400	.39	30-40	1014	2114	45
	9600	.41	32-41	1036	2159	45
	9800	.43	35-43	1057	2204	45
	10000	.45	37-46	1079	2249	45
	10200	.47	40-50	1101	2294	45
	10400	.50	42-51	1122	2339	50
	10600	.53	43-53	1144	2384	50

Notes: 1. All data is based on the Air Diffusion Council Guidelines
2. Throw data is based on Terminal Velocities of 75 FPM using isothermal air
3. Actual noise levels are less than those shown.

530 SERIES - SIDE DISCHARGE CONCENTRIC DIFFUSER SYSTEM



**LIGHT COMMERCIAL
PLASTER CEILING**



**COMMERCIAL
"T" BAR CEILING**

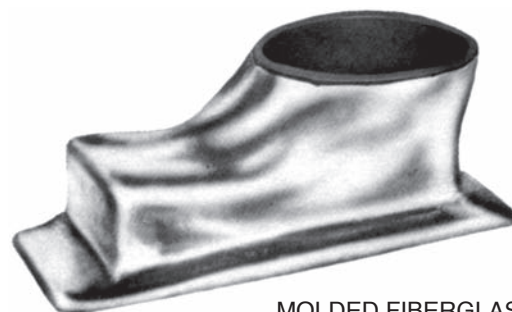
530 SERIES concentric diffuser systems are designed to provide a single point air distribution system with the added benefit of having directional air control. The systems may be used with either a "T-Bar" ceiling or a plaster ceiling.

Standard features include:

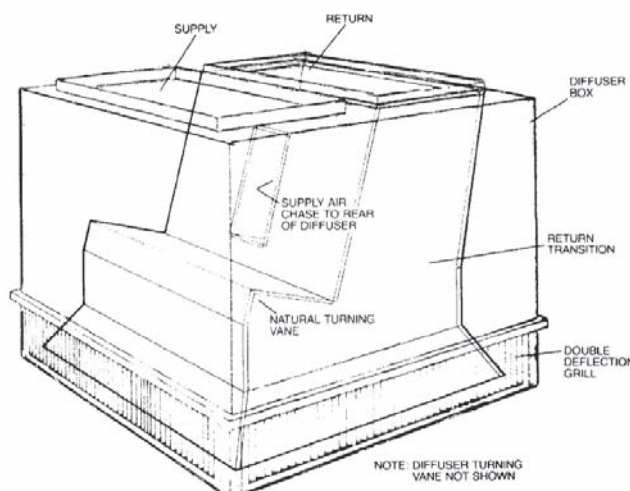
1. All aluminum diffuser with aluminum return air eggcrate.
2. Double deflection diffuser with the blades secured by spring steel.
3. Built-in Anti-Sweat gasket.
4. Molded Fiberglass Transition (through five tons).
5. Built-in hanging supports.
6. Diffuser box constructed of fiberglass ductboard (through 7.5 tons) or sheetmetal.

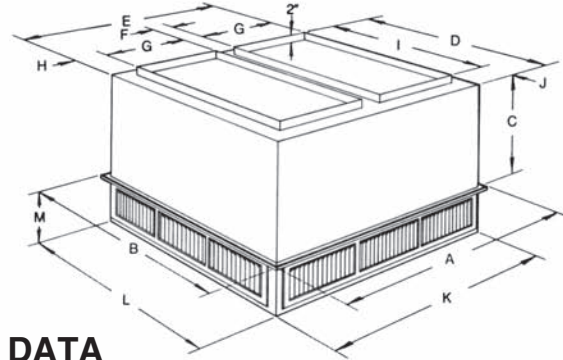
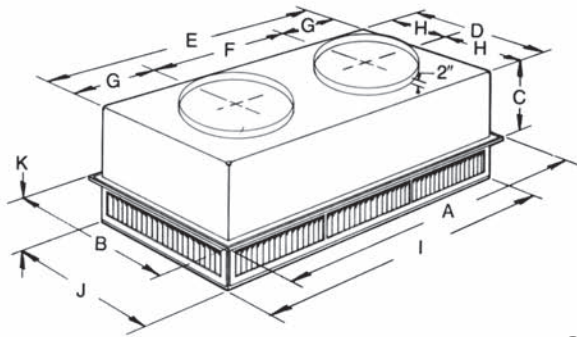
Standard benefits include:

1. Even four (4) way airflow.
2. All exposed surfaces (below ceiling) are brushed aluminum.
3. Factory assembled and sealed.
4. Guaranteed not to "sweat".
5. Guaranteed not to recirculate air flow (short cycle).
6. Return air eggcrate is easily removed.
7. Units are fully insulated (both supply and return).
8. Lightweight design.



**MOLDED FIBERGLASS
TRANSITION
(THRU 5 TONS ONLY)**



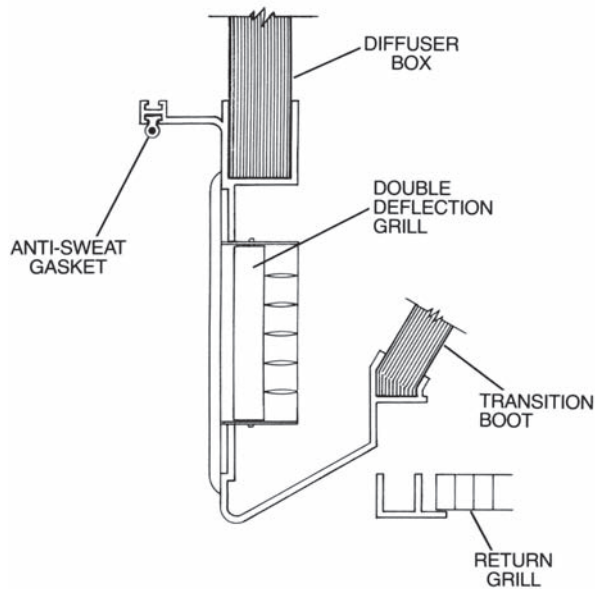


DIMENSIONAL DATA

MODEL No	A	B	C	D	E	F	G	H	I	J	K	L	M	DUCT SIZE
CDK 1-2 -530	47 ⁵ / ₈	23 ⁵ / ₈	11 ³ / ₈	21 ¹ / ₂	45	22 ¹ / ₂	11 ¹ / ₂	10 ³ / ₄	45 ¹ / ₂	21 ¹ / ₂	7 ¹ / ₈	-	-	16RD
CDK 3-530	47 ⁵ / ₈	23 ⁵ / ₈	11 ³ / ₈	21 ¹ / ₂	45	22 ¹ / ₂	11 ¹ / ₂	10 ³ / ₄	45 ¹ / ₂	21 ¹ / ₂	7 ¹ / ₈			18RD
CDK 90-530	47 ⁵ / ₈	29 ⁵ / ₈	14 ³ / ₈	27 ¹ / ₂	45	22 ¹ / ₂	11 ¹ / ₂	13 ³ / ₄	45 ¹ / ₂	27 ¹ / ₂	8 ¹ / ₈			20RD

MODEL No	A	B	C	D	E	F	G	H	I	J	K	L	M	DUCT SIZE
CDK 120-530	47 ⁵ / ₈	35 ⁵ / ₈	20 ⁵ / ₈	33 ¹ / ₂	45 ¹ / ₂	4 ¹ / ₂	18	2 ¹ / ₂	28	2 ³ / ₄	45 ¹ / ₂	33 ¹ / ₂	9 ¹ / ₈	18x28
CDK 180-530	47 ⁵ / ₈	47 ⁵ / ₈	24 ⁵ / ₈	45 ¹ / ₂	45 ¹ / ₂	4 ¹ / ₂	18	2 ¹ / ₂	36	4 ³ / ₄	45 ¹ / ₂	45 ¹ / ₂	10 ¹ / ₈	18x36
CDK 240-530	59 ⁵ / ₈	59 ⁵ / ₈	30 ⁵ / ₈	57 ¹ / ₂	57 ¹ / ₂	4 ¹ / ₂	24	2 ¹ / ₂	48	4 ³ / ₄	57 ¹ / ₂	57 ¹ / ₂	11 ¹ / ₈	24x48

530 SERIES CONCENTRIC DIFFUSER ENGINEERING DATA



TYPICAL SPECIFICATIONS

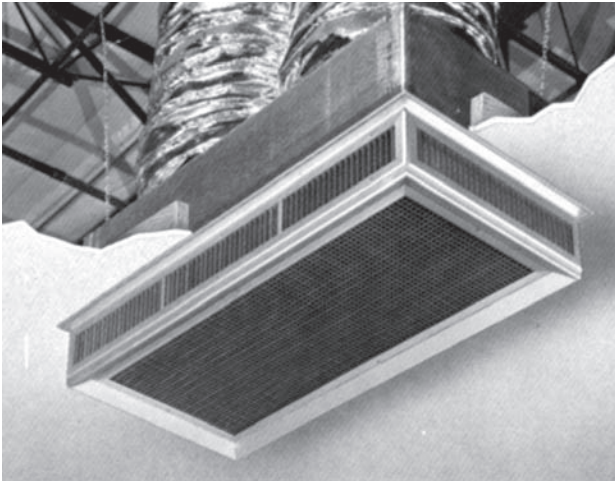
Furnish and install McDaniel Metals, Inc. "530 SERIES" concentric diffuser systems. The system shall consist of an aluminum double supply diffuser with an aluminum eggcrate return. ALL EXPOSED SURFACES (BELOW CEILING) MUST BE BRUSHED ALUMINUM. It shall also have a permanent (not adhesive) anti-sweat gasket and hanging supports.

All units that are five (5) tons and smaller shall have a molded fiberglass interior transition.

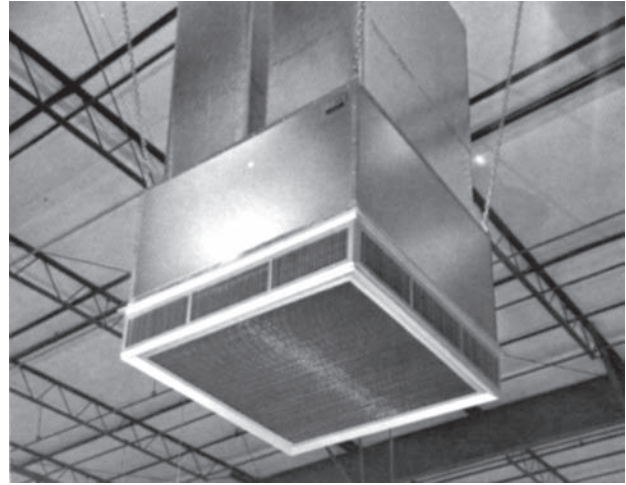
PART No	CFM	Statistic Pressure	Throw Feet	Neck Vel.	Jet Vel.	Noise Level
CDK 1-2 -530	600	.09	8-15	210	210	20
	800	.11	9-16	281	281	20
	1000	.14	10-17	351	351	20
	1200	.17	11-18	421	421	20
	1400	.20	12-19	491	491	20
CDK 3-530	1000	.14	10-17	351	351	20
	1200	.17	11-18	421	421	20
	1400	.20	12-19	491	491	20
	1600	.24	12-20	561	561	20
	1800	.30	13-21	632	632	20
	2000	.36	14-23	702	702	20
	2200	.40	16-25	772	772	20
CDK 90-530	2600	.17	24-29	669	669	20
	2800	.20	25-30	720	720	25
	3000	.25	27-33	772	772	25
	3200	.31	28-35	823	823	25
	3400	.37	30-37	874	874	30
CDK 120-530	3600	.17	25-33	851	851	30
	3800	.18	27-35	898	898	30
	4000	.21	29-37	946	946	30
	4200	.24	32-40	993	993	30
	4400	.27	34-42	1040	1040	30
CDK 180-530	5600	.36	39-49	920	920	30
	5800	.39	42-51	954	954	30
	6000	.42	44-54	1022	1022	30
	6200	.46	45-55	1056	1056	30
	6400	.50	46-55	1090	1090	30
	6600	.54	47-56	1124	1124	30
CDK 240-530	7200	.39	33-38	827	827	25
	7400	.41	35-40	850	850	25
	7600	.43	36-41	873	873	25
	7800	.47	38-43	896	896	30
	8000	.50	39-44	918	918	30
	8200	.53	41-46	941	941	30
	8400	.56	43-49	964	964	30
	8600	.59	44-50	987	987	30
	8800	.63	47-55	1010	1010	30

- Notes:
1. All data is based on the Air Diffusion Council Guidelines
 2. Throw data is based on Terminal Velocities of 75 FPM using isothermal air
 3. Actual noise levels are less than those shown.
 4. Throw is based on diffuser blades being directed in a straight pattern.

535 SERIES - SIDE DISCHARGE CONCENTRIC DIFFUSER WITH FILTER GRILL



**LIGHT COMMERCIAL
PLASTER CEILING**



**COMMERCIAL
NO CEILING**

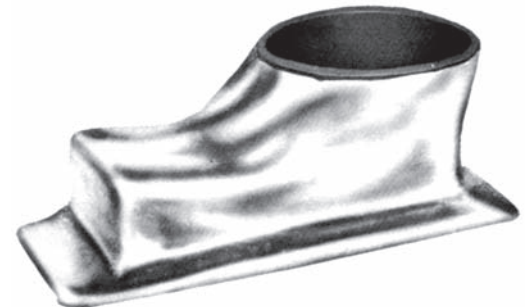
535 SERIES concentric diffuser systems are designed to provide a single point air distribution system with the added benefit of having directional air control and a return air filter. The systems may be used with either a "T-Bar" ceiling or a plaster ceiling or with no ceiling at all.

Standard features include:

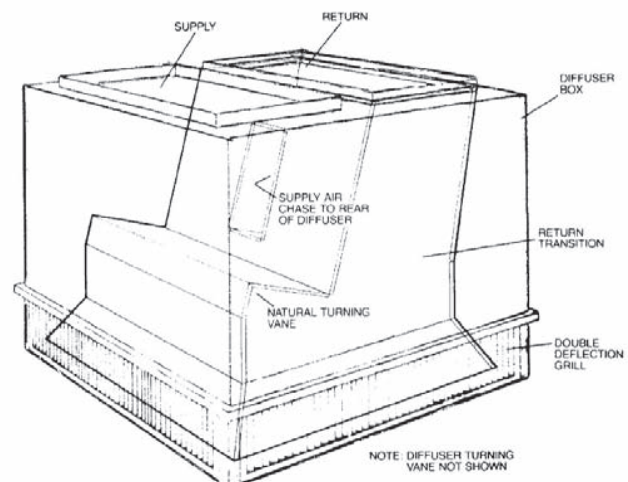
1. All aluminum diffuser with aluminum return air eggcrate.
2. Return air filter grill.
3. Double deflection diffuser with the blades secured by spring steel.
4. Built-In Anti Sweat Gasket.
5. Molded Fiberglass Transition (through five tons).
6. Built-in hanging supports.
7. Diffuser box constructed of fiberglass ductboard (through 7.5 tons) or sheetmetal.

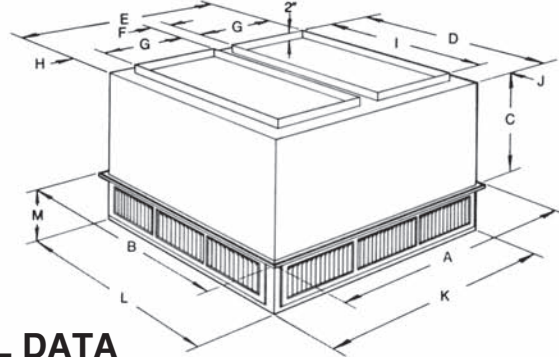
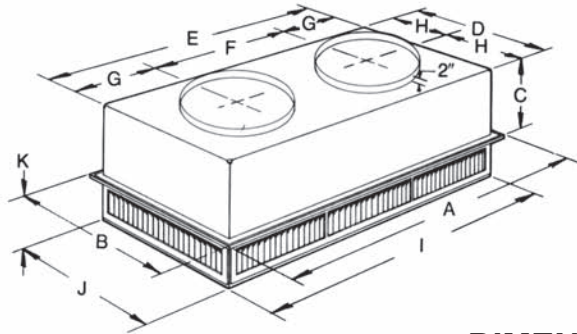
Standard benefits include:

1. Even four (4) way airflow.
2. All exposed surfaces (below ceiling) are brushed aluminum.
3. Factory assembled and sealed.
4. Guaranteed not to "sweat"
5. Guaranteed not to recirculate air flow (short cycle).
6. Filter is removed from inside the conditioned space.
7. Return air eggcrate is easily removed.
8. Units are fully insulated (both supply and return).
9. Lightweight design.



**MOLDED CORE
(THRU 5 TONS ONLY)**



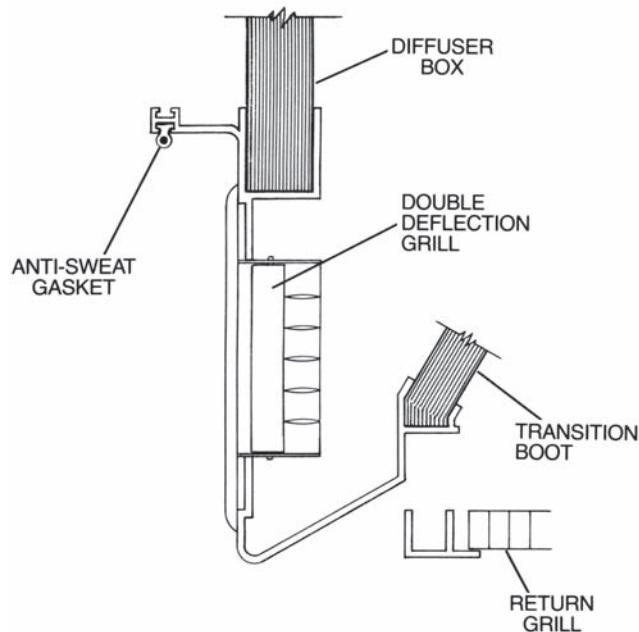


DIMENSIONAL DATA

MODEL No	A	B	C	D	E	F	G	H	I	J	K	L	M	DUCT SIZE
CDK 1-2 -535	47 ⁵ / ₈	23 ⁵ / ₈	11 ³ / ₈	21 ¹ / ₂	45 ¹ / ₂	22 ¹ / ₂	11 ¹ / ₂	10 ³ / ₄	45 ¹ / ₂	21 ¹ / ₂	7 ¹ / ₈	-	-	16RD
CDK 3-535	47 ⁵ / ₈	23 ⁵ / ₈	11 ³ / ₈	21 ¹ / ₂	45 ¹ / ₂	22 ¹ / ₂	11 ¹ / ₂	10 ³ / ₄	45 ¹ / ₂	21 ¹ / ₂	7 ¹ / ₈	-	-	18RD
CDK 90-535	47 ⁵ / ₈	29 ⁵ / ₈	14 ³ / ₈	27 ¹ / ₂	45 ¹ / ₂	22 ¹ / ₂	11 ¹ / ₂	13 ³ / ₄	45 ¹ / ₂	27 ¹ / ₂	8 ¹ / ₈	-	-	20RD

MODEL No	A	B	C	D	E	F	G	H	I	J	K	L	M	DUCT SIZE
CDK 120-535	47 ⁵ / ₈	35 ⁵ / ₈	20 ⁵ / ₈	33 ¹ / ₂	45 ¹ / ₂	4 ¹ / ₂	18	2 ¹ / ₂	28	2 ³ / ₄	45 ¹ / ₂	33 ¹ / ₂	9 ¹ / ₈	18x28
CDK 180-535	47 ⁵ / ₈	47 ⁵ / ₈	24 ⁵ / ₈	45 ¹ / ₂	45 ¹ / ₂	4 ¹ / ₂	18	2 ¹ / ₂	36	4 ³ / ₄	45 ¹ / ₂	45 ¹ / ₂	10 ¹ / ₈	18x36
CDK 240-535	59 ⁵ / ₈	59 ⁵ / ₈	30 ⁵ / ₈	57 ¹ / ₂	57 ¹ / ₂	4 ¹ / ₂	24	2 ¹ / ₂	48	4 ³ / ₄	57 ¹ / ₂	57 ¹ / ₂	11 ¹ / ₈	24x48

530 SERIES CONCENTRIC DIFFUSER ENGINEERING DATA



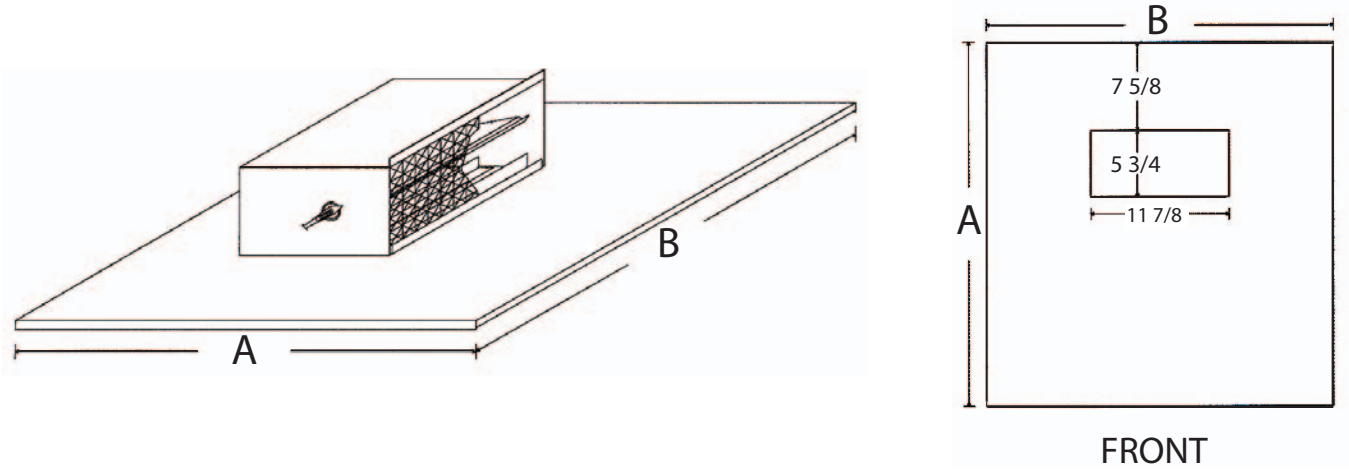
PART No	CFM	Statistic Pressure	Throw Feet	Neck Vel.	Jet Vel.	Noise Level
CDK 1-2 -535	600	.17	8-15	210	210	20
	800	.19	9-16	281	281	20
	1000	.24	10-17	351	351	20
	1200	.28	11-18	421	421	20
	1400	.30	12-19	491	491	20
CDK 3-535	1000	.24	10-17	351	351	20
	1200	.28	11-18	421	421	20
	1400	.30	12-19	491	491	20
	1600	.35	12-20	561	561	20
	1800	.42	13-21	632	632	20
	2000	.49	14-23	702	702	20
	2200	.54	16-25	772	772	20
CDK 90-535	2600	.28	24-29	669	669	20
	2800	.30	25-30	720	720	25
	3000	.36	27-33	772	772	25
	3200	.43	28-35	823	823	25
CDK 120-535	3400	.50	30-37	874	874	30
	3600	.28	25-33	851	851	30
	3800	.29	27-35	898	898	30
	4000	.31	29-37	946	946	30
	4200	.35	32-40	993	993	30
CDK 180-535	4400	.39	34-42	1040	1040	30
	5600	.49	39-49	920	920	30
	5800	.52	42-51	954	954	30
	6000	.56	44-54	1022	1022	30
	6200	.60	45-55	1056	1056	30
	6400	.64	46-55	1090	1090	30
CDK 240-535	6600	.69	47-56	1124	1124	30
	7200	.52	33-38	827	827	25
	7400	.55	35-40	850	850	25
	7600	.57	36-41	873	873	25
	7800	.61	38-43	896	896	30
	8000	.64	39-44	918	918	30
	8200	.68	41-46	941	941	30
	8400	.70	43-49	964	964	30
	8600	.74	44-50	987	987	30
	8800	.80	47-55	1010	1010	30

Notes: 1. All data is based on the Air Diffusion Council Guidelines.
2. Throw data is based on Terminal Velocities of 75 FPM using isothermal air
3. Actual noise levels are less than those shown.
4. Throw is based on diffuser blades being directed in a straight pattern.

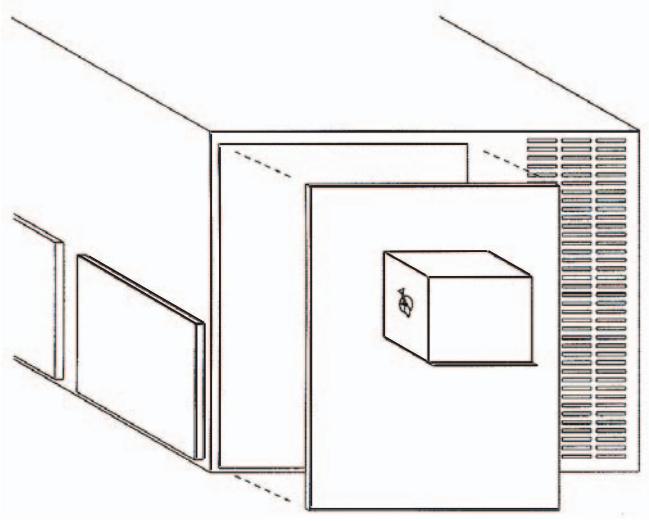
TYPICAL SPECIFICATIONS

Furnish and install McDaniel Metals, Inc. "535 SERIES" concentric diffuser systems. The system shall consist of an aluminum double deflection supply diffuser with an aluminum eggcrate filter grill return. ALL EXPOSED SURFACES (BELOW CEILING) MUST BE BRUSHED ALUMINUM. It shall also have a permanent (not adhesive) anti-sweat gasket and hanging supports. All units that are five (5) tons and smaller shall have molded fiberglass interior transition.

PGMDH-, PGMDMH- MOTORIZED / MANUAL FRESH AIR
DAMPERS FOR GOODMAN / AMANA GPG-, APG- 024-060
PACKAGE UNITS - HORIZONTAL APPLICATION



MODEL	A	B
PGMDH101	26.5	29.75
PGMDH102	31.5	29.75
PGMDH103	39	29.75



MANUAL DAMPER

SPECIFICATIONS:

- 1) Provides from 0 to 25% outside air.
2) Locking selection knob to maintain constant opening.

MOTORIZED DAMPER

SPECIFICATIONS:

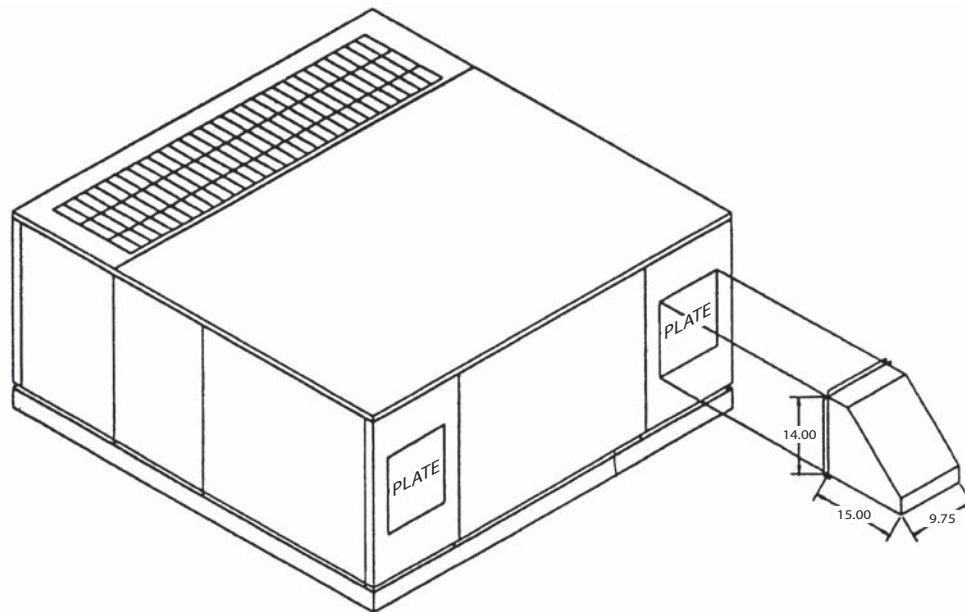
- 1) 24 VAC damper motor with spring return
2) Fully assembled and factory wired.

GENERAL

SPECIFICATIONS:

- 1) Painted to match unit.
2) All installation hardware and instructions included.

**PGMDM-5 & PGMD-5
MOTORIZED / MANUAL FRESH AIR DAMPER
FOR PGC(PCC) 090-120 PACKAGE UNITS**



MANUAL DAMPER

SPECIFICATIONS:

- 1) Provides from 0 to 25% outside air.
- 2) Locking selection knob to maintain constant opening.

MOTORIZED DAMPER

SPECIFICATIONS:

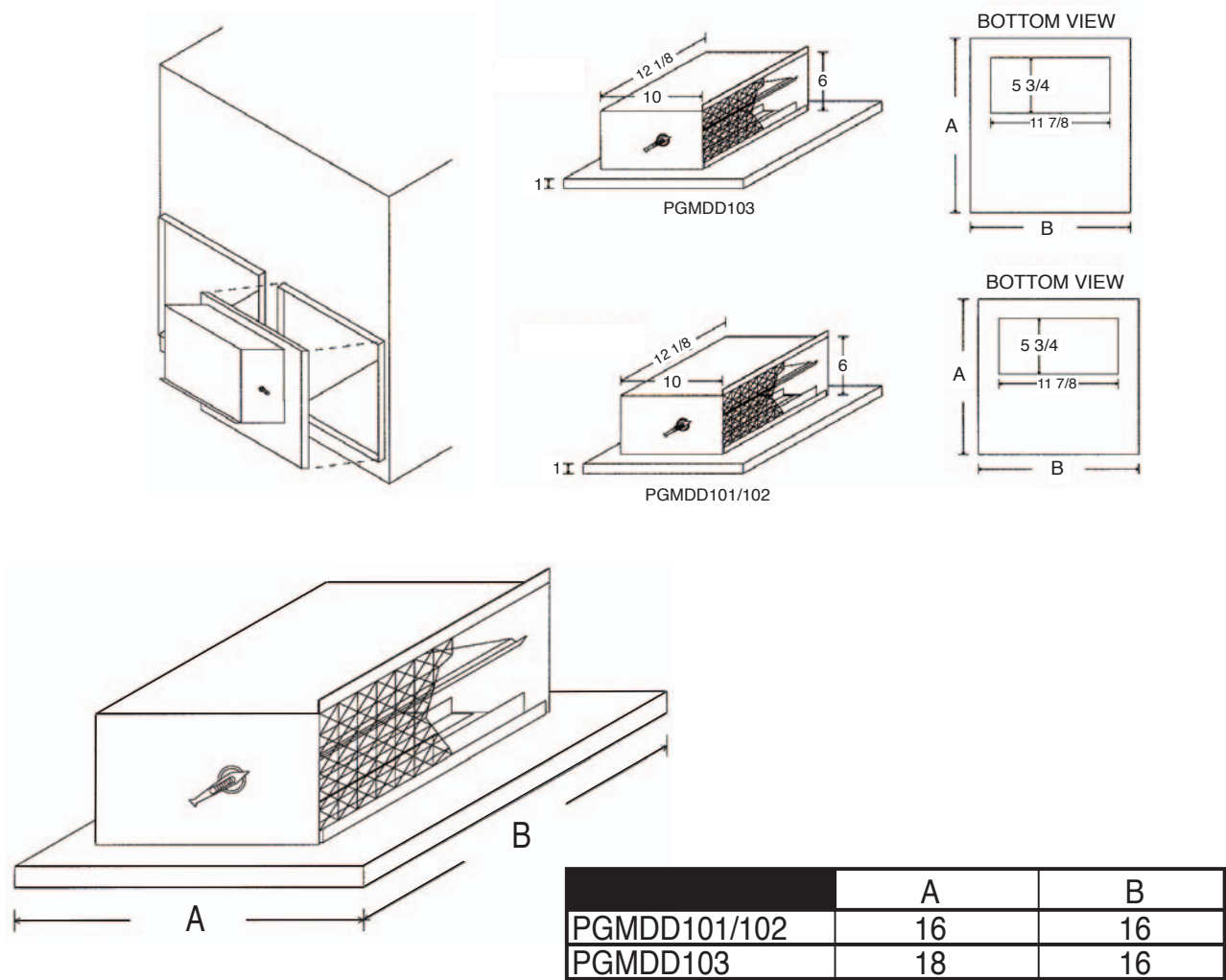
- 1) 24 VAC damper motor with spring return
- 2) Fully assembled and factory wired.
- 3) When installing one motorized fresh air damper, use the damper opening on the evaporator motor drive side of the equipment.

GENERAL

SPECIFICATIONS:

- 1) One manual or motorized fresh air damper can be used for 0 to 25% outside air. Two accessories can be used for up to 50% outside air.
- 2) Painted to match unit.
- 3) All installation hardware and instructions included.
- 4) Permanent Filter size - 14" x 9 1/2"

PGMDD-, PGMDMD- MOTORIZED / MANUAL FRESH AIR DAMPER
FOR GOODMAN /AMANA GPG-, APG-, 024-060
PACKAGE UNITS DOWNFLOW APPLICATION



MANUAL DAMPER
SPECIFICATIONS:

- 1) Provides from 0 to 25% outside air.
2) Locking selection knob to maintain constant opening.

MOTORIZED DAMPER
SPECIFICATIONS:

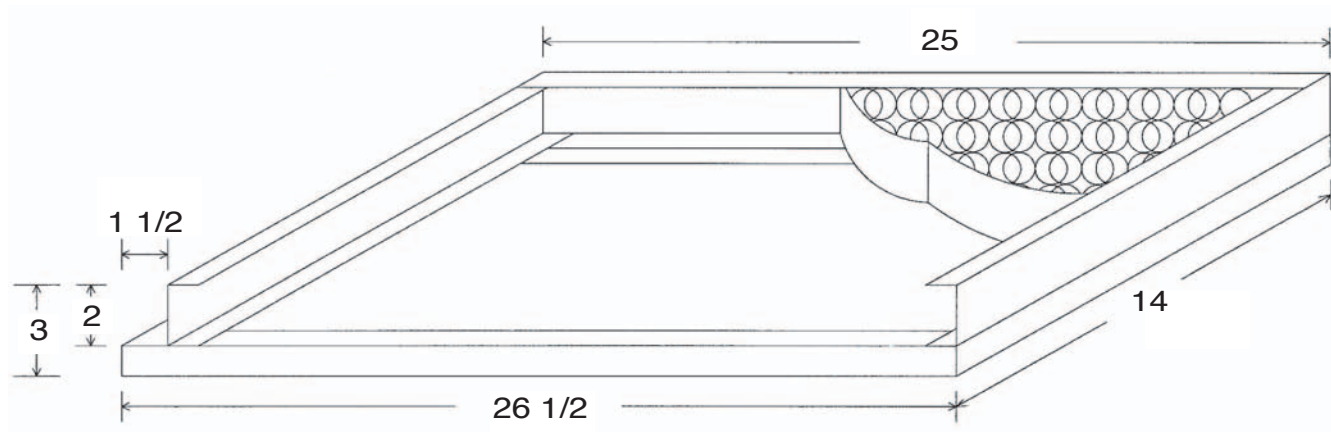
- 1) 24 VAC damper motor with spring return
2) Fully assembled and factory wired.

GENERAL
SPECIFICATIONS:

- 1) Painted to match unit.
2) All installation hardware and instructions included.

**DOWNFLOW FILTER RACK
FOR GOODMAN / AMANA GPG- ,APG- 024-060
PACKAGE UNIT**

PGFR101/102/103



Filter Size 14 X 25 X 2

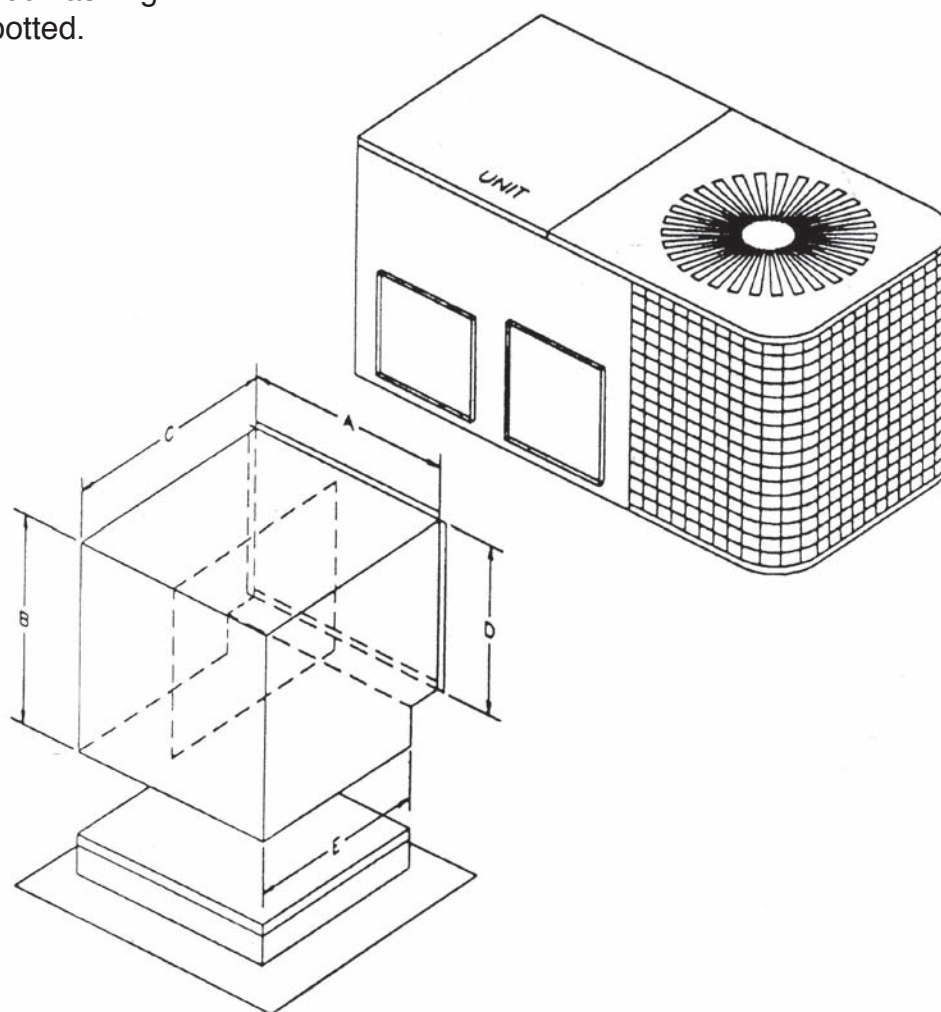


Note:
PGFR cannot be used with downflow economizers.

**PCEF-1, PCEF 2-3
DOWNFLOW ELBOW & FLASHING
FOR GOODMAN PCK / PHK 024 - 060 PACKAGE UNITS**

FEATURES:

1. 26 ga. galvanized construction.
2. 1" insulation.
3. Fully Assembled.
4. Soldered flashing.
5. Pin Spotted.



MODEL	A	B	C	D	E
PCEF-1	28 1/2	28 1/4	25	20 1/4	20
PCEF-2-3	34 1/2	32 1/4	25	24 1/4	20

HORIZONTAL DUCT CONVERSION KIT ASSEMBLY AND INSTALLATION

**ACCESSORY NUMBER PGHDK090/102-5A
FOR USE WITH: PGC/PCC090 THRU 102**

**ACCESSORY NUMBER PGHDK120/180-5A
FOR USE WITH: PGC/PCC 120**

**DUCT OPENINGS:
R/A - 40 1/4 X 17 5/8
S - 40 1/4 X 12 5/8**

**R/A - 40 1/4 X 17 5/8
S - 40 1/4 X 20 5/8**

GENERAL

The horizontal air discharge accessory is used to convert a vertical discharge unit to horizontal supply and return air configuration. This accessory is intended to cover the air duct holes in the bottom of the unit, divide the discharge air return airstreams at the back of the unit and provide flanges for duct connections to the unit cabinet. Assembly and installation are the responsibility of the installing contractor.

INSPECTION

Inspect accessory number to assure the unit model is correct. Verify that all parts and quantities of each item as shown below are included.

Quantity	Description
2	Vertical Duct Hole Covers
1	Supply/Return Divider Panel
1	Top Duct Flange Angle
1	Bottom Duct Flange Angle
1	Center Duct Flange Channel
2	Discharge Duct Flange Side Angles
2	Return Duct Flange Side Angles
1	Fastener Package
1	Blockoff Kit

INSTALLATION

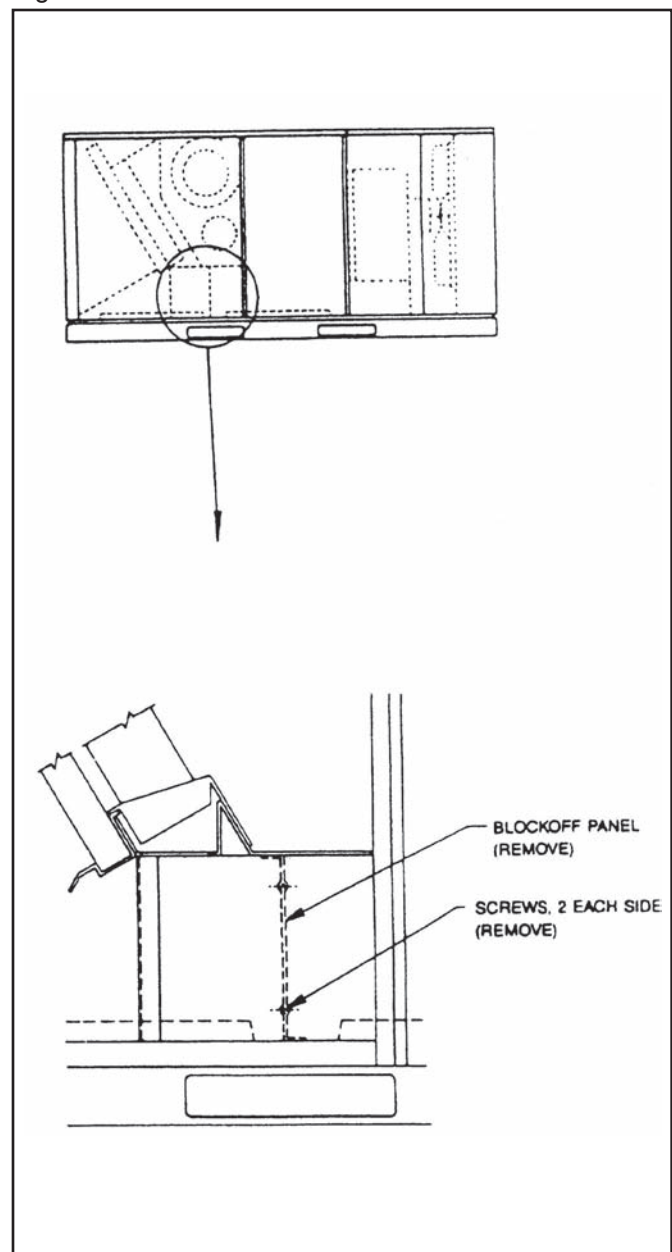
This accessory is to be installed by an experienced installation company and fully trained personnel.

CAUTION: Sheetmetal parts, screws, clips and similar items inherently have sharp edges, and it is necessary that the installer exercise caution.

1. Disconnect electrical power to the unit.
2. Remove back panel and discard.
3. Remove both filter access panels.
4. Remove block-off panel that is located below the fan and evaporator coil section. Refer to Figure1. Remove two screws from each side and remove the panel through the back of the unit (discard panel).

NOTE: Be careful not to damage firestats or the mixed air sensor that may be installed in the block-off panel supports.

Figure 1



HORIZONTAL AIR DISCHARGE CONVERSION ASSEMBLY AND INSTALLATION (cont.)

5. Install the cover panels for the discharge and return air holes in the bottom of the unit. The holes are the same size, and the covers are interchangeable. Insert the cover panel through the back opening in the cabinet turning as necessary to fit through the opening. Center the panel over the duct opening and dress the leading edge on the duct opening flange. Force the panel forward so the panel can drop down into position. Refer to Figure 2. The channels on the cover panel lock the panel in position. Check that the panel is securely engaged.

6. Install the supply/return divider panel through the back opening. Insert the panel at a downward angle so that the panel rests on top of the flanges "A" of the side triangular panels, and the front edge of the panel locks under the flange on the frame filter "B". Secure the panel to the cabinet with two screws.

7. Install the duct flanges to the cabinet and divider panel with screws as indicated. Refer to Figure 3. Apply duct sealant (field supplied) to the top return air angle and around screws to minimize moisture leakage. In addition, installer is responsible for providing a weather tight seal between the duct and the unit.

8. Replace filter access panels.

Figure 2

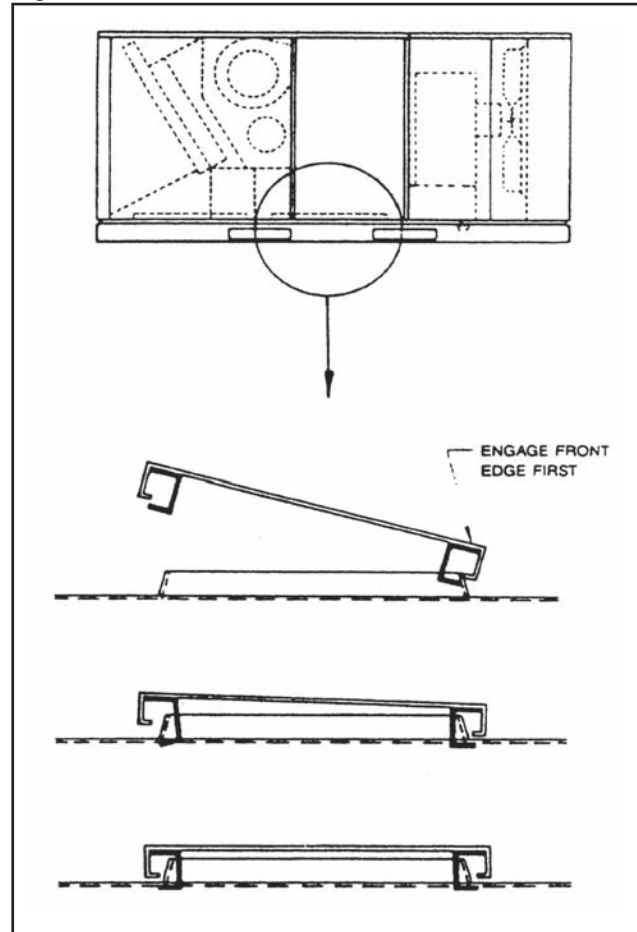
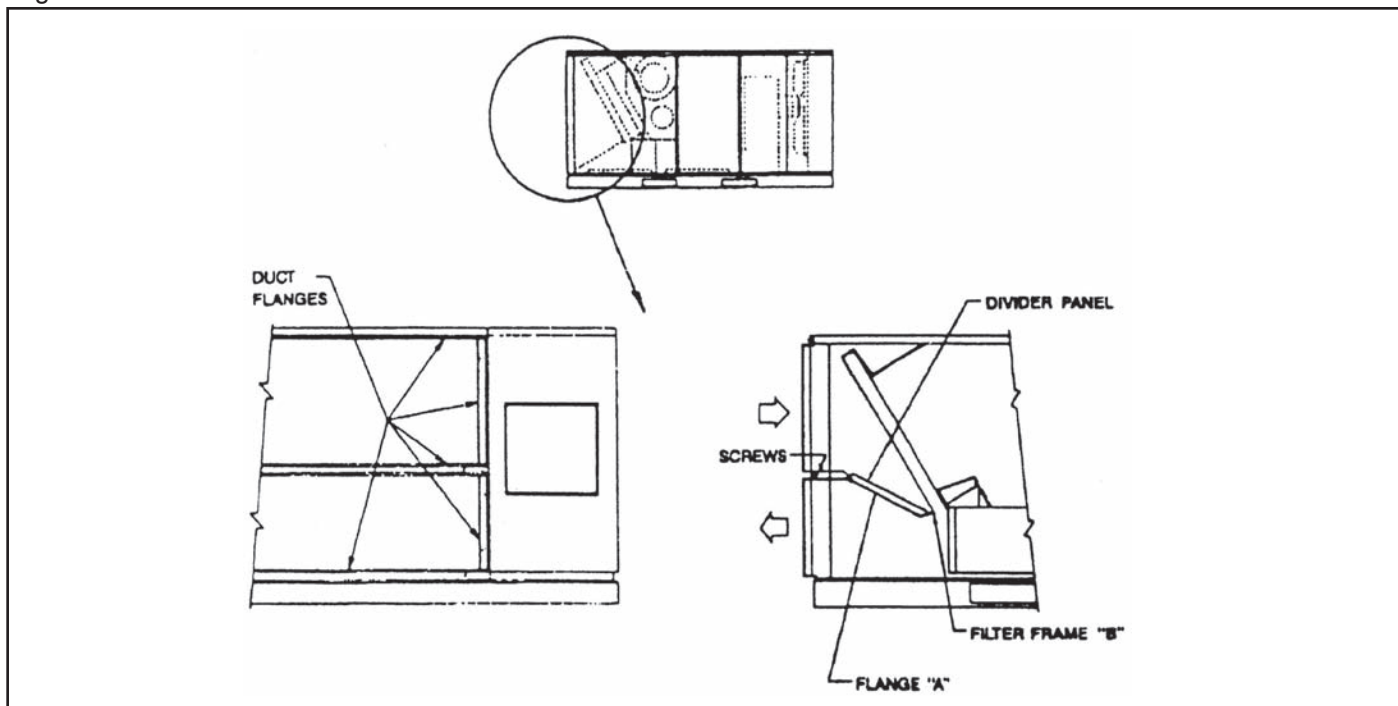


Figure 3



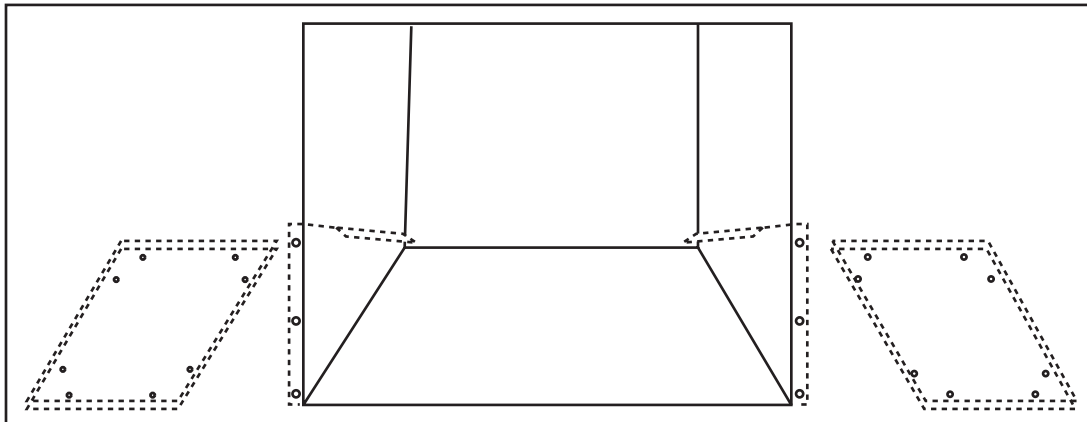
PGHDK 090/180-5A BLOCK-OFF KIT

Package Includes:

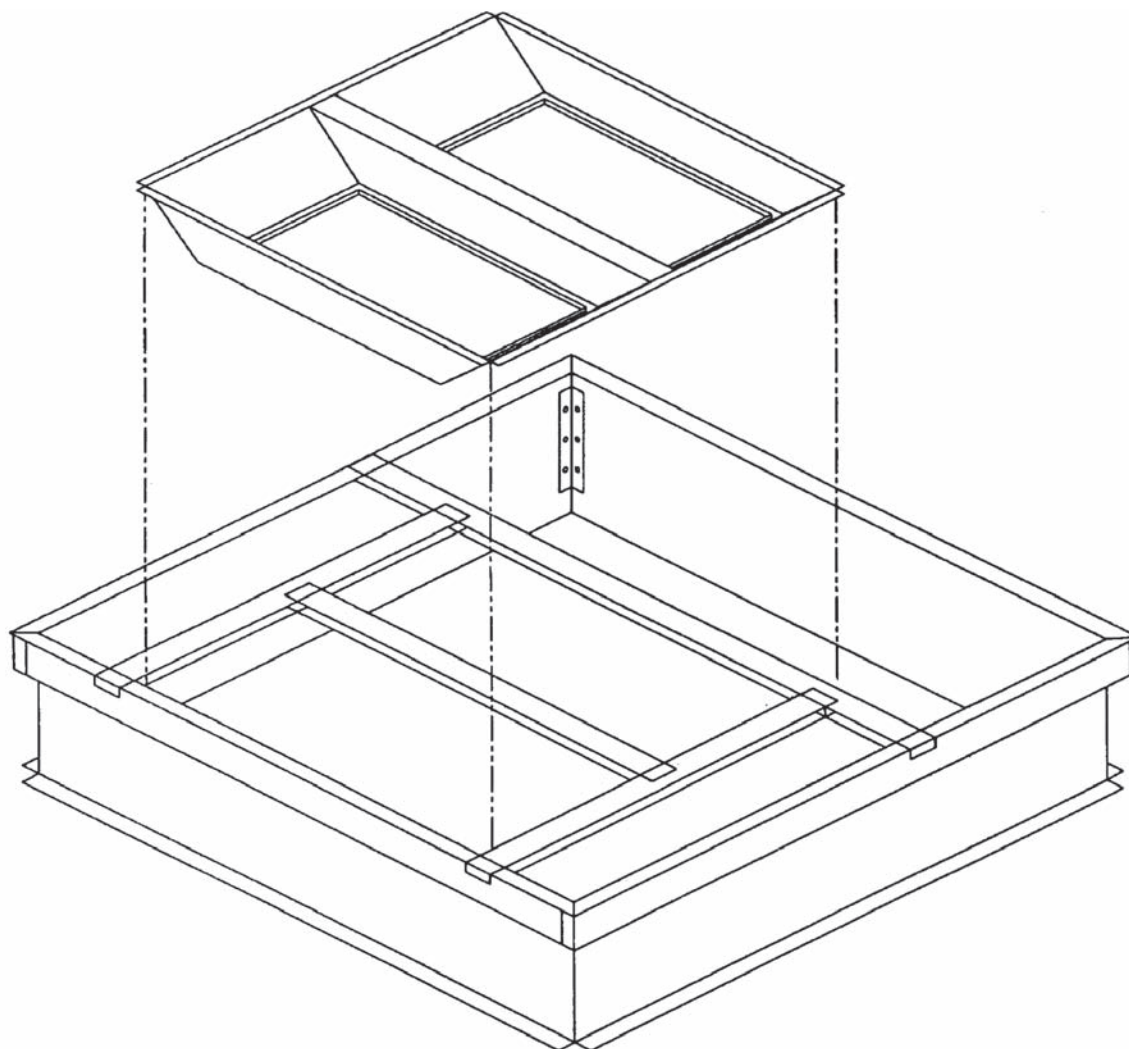
- 2 - Triangular Block-Offs
- 2 - Rectangular Block-Offs
- 1 - Screw Package

Remove front panel from unit and install Triangular Block-Offs as shown in diagram. Secure with screws provided.

Remove side panels from unit and install Rectangular Block-Offs over R/A openings as shown in diagram and secure with screws provided. Be sure to replace side panels afterwards.



**PGCT120-5
CONCENTRIC TRANSITION
PGC(PCC)120 PACKAGE UNITS**



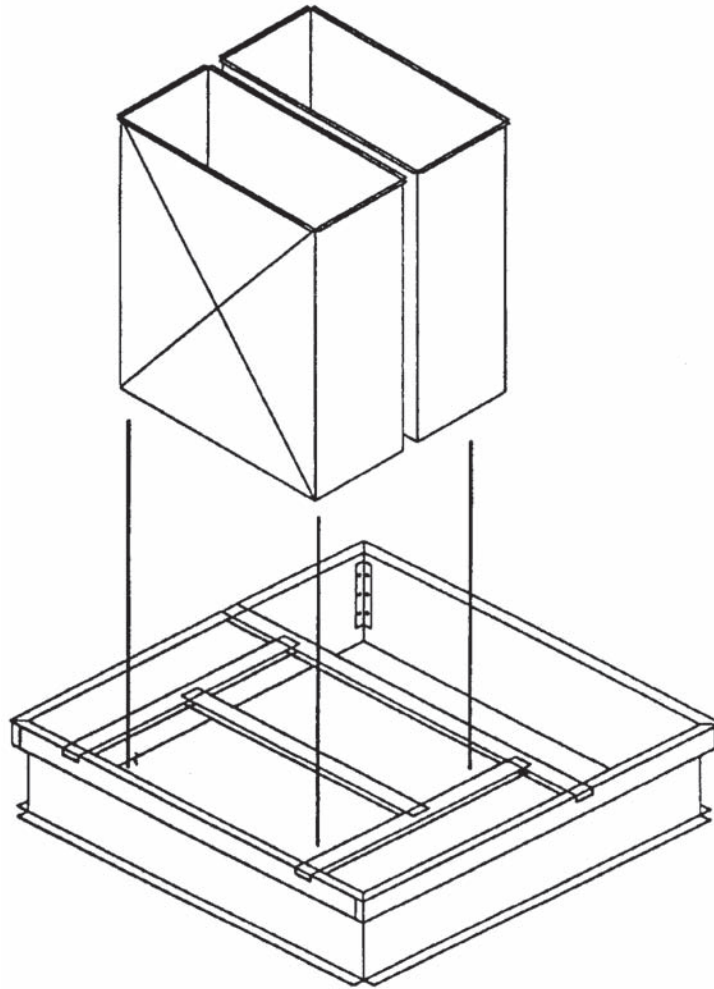
APPLICATIONS

- 1) Concentric Transition can be used in conjunction with PGC-5 Roof Curb to easily connect curb to concentric converter.
- 2) Duct work can be run from Concentric transition to Concentric Converter.
Recommended Duct Size 18" X 28"



NOTE: Remove Center Duct Support On PGC-5 when using PGCT120-5

**PGP-5
4" PLENUM DROPS W/CAPS
PGC(PCC) 090-120 PACKAGE UNITS**



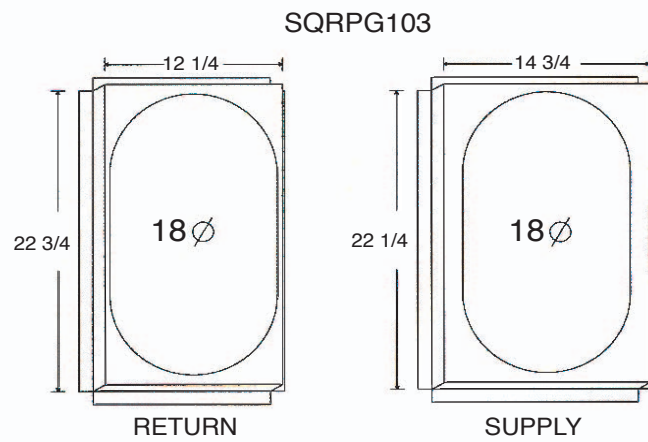
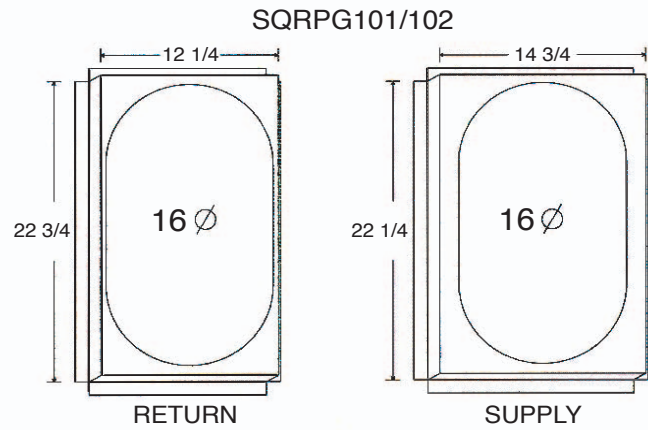
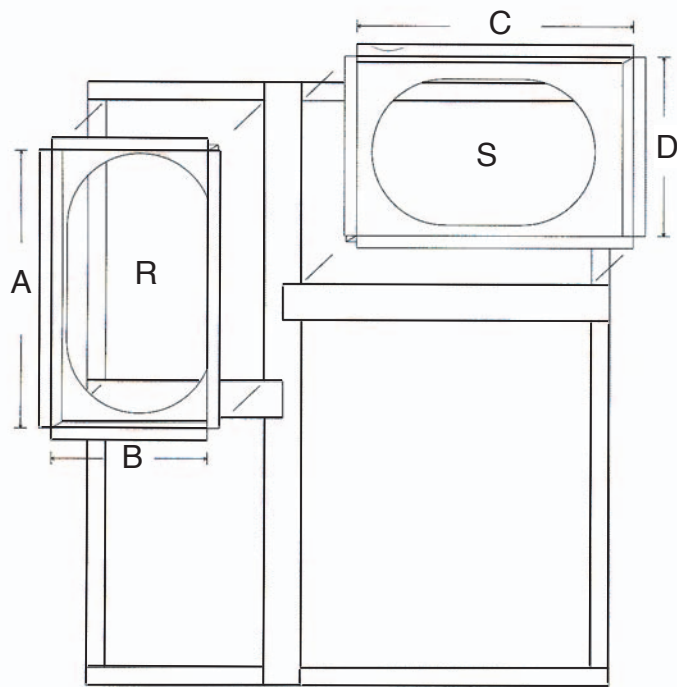
SPECIFICATIONS

1. Constructed of 22 Ga. sheetmetal
2. Insulated with 1" duct liner
3. Pinspotted
4. S + drive end caps

APPLICATIONS

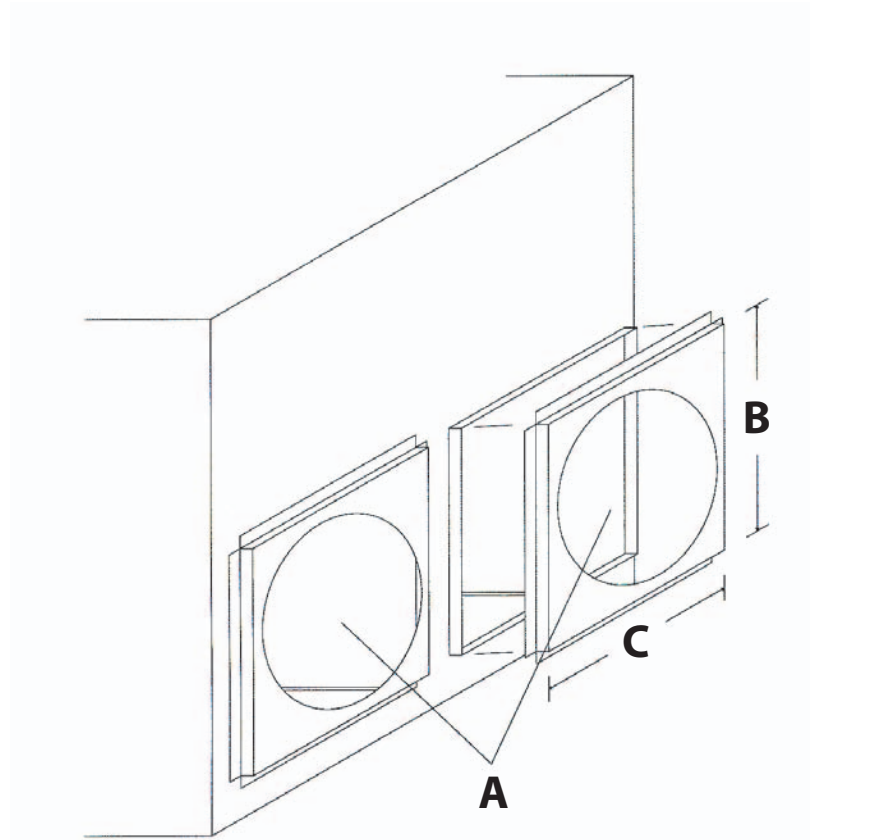
1. 4' Plenum w/caps can be used in conjunction with PGC-5 Roof Curb to easily connect duct work

**SQUARE TO ROUND DOWNFLOW CONVERTER
FOR GOODMAN / AMANA
GPG -, APG - 024-060**



	A	B	C	D	RETURN	SUPPLY
SQRPG101/102	22 3/4	12 1/4	22 1/4	14 3/4	16	16
SQRPG103	22 3/4	12 1/4	22 1/4	14 3/4	18	18

SQUARE TO ROUND CONVERTER FOR GOODMAN / AMANA
GPG -, APG - 024-060 HORIZONTAL APPLICATION



MODEL	A	B	C
SQRPGH101/102	16	16 1/2	16 1/2
SQRPGH103	18	18 1/2	18 1/2

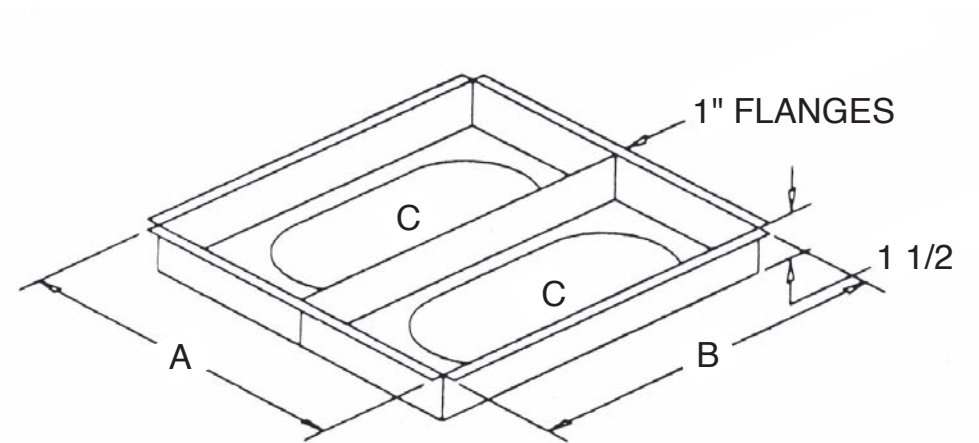
SQRPC-1 & SQRPC-2-3

SQUARE TO ROUND CONVERTER

FOR GOODMAN PCK/PHK024 - 060 PACKAGE UNITS

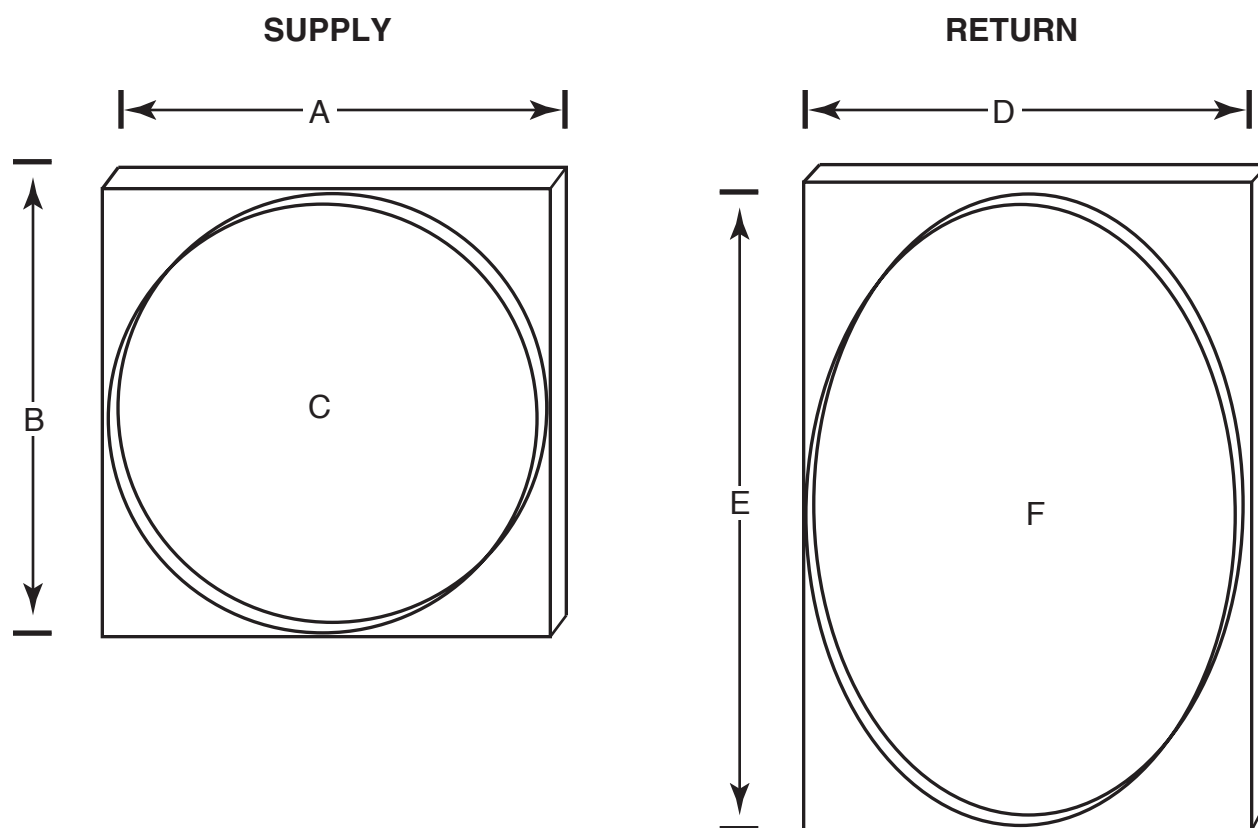
This square to round converter is used with PCP downflow plenums & PCCP Curb

- FEATURES:**
- 1. 20 ga. galvanized construction
 - 2. 1" insulation.



MODEL	A	B	C
SQRPC-1	223/8	29	16
SQRPC 2-3	281/8	29	18

**SQRPCH 1,2,3 SQUARE TO ROUND
CONVERTER FOR PCK/PHK UNITS (Horizontal Applications)**

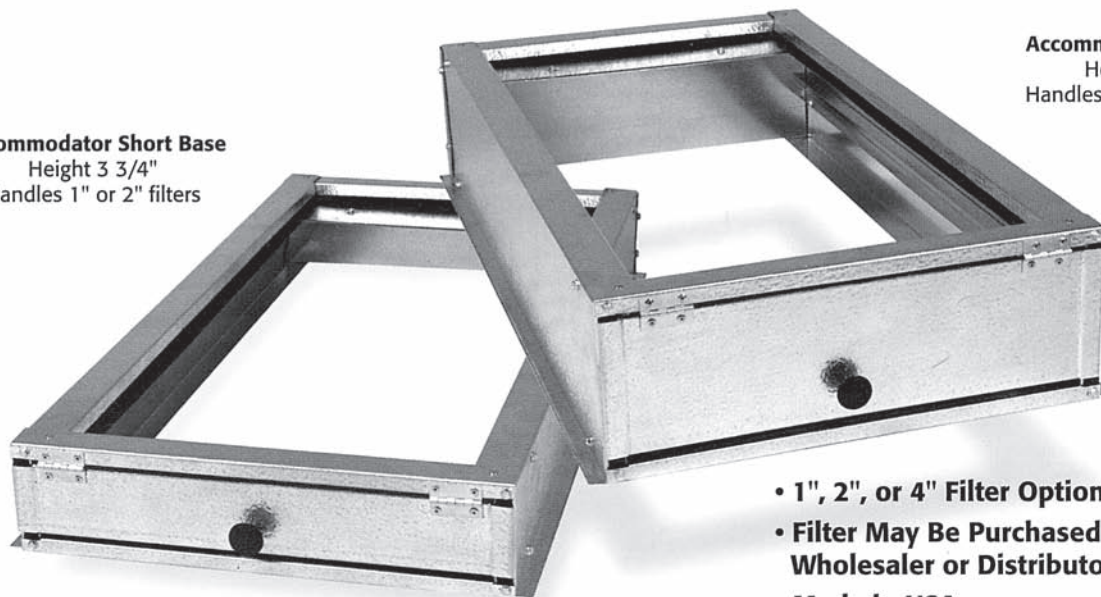


MODEL	A	B	C	D	E	F
SQRPCH-1	12 ¹ / ₈	12 ¹ / ₈	12	12 ¹ / ₈	20 ¹ / ₈	14
SQRPCH-2	14 ¹ / ₈	14 ¹ / ₈	14	14 ¹ / ₈	22 ¹ / ₈	16
SQRPCH-3	14 ¹ / ₈	14 ¹ / ₈	14	14 ¹ / ₈	24 ¹ / ₈	18
SQRPCH-2-14	14 ¹ / ₈	14 ¹ / ₈	14	14 ¹ / ₈	22 ¹ / ₈	14
SQRPCH-3-14	14 ¹ / ₈	14 ¹ / ₈	14	14 ¹ / ₈	24 ¹ / ₈	14

GAS FURNACE ACCESSORIES

Accommodator Filter Housing

Accommodator Short Base
Height 3 3/4"
Handles 1" or 2" filters



Accommodator Tall Base
Height 5 3/4"
Handles 1", 2" or 4" filters

- 1", 2", or 4" Filter Option
- Filter May Be Purchased At Your Local Wholesaler or Distributor
- Made in USA
- New Hinged Door For Easy Access
- Accommodates Standard Filters
- Gaskets Provide Tight Seal
- Completely Insulated
- Sizes To Fit All Furnaces Through 5 Tons

Accommodator Short

Specifications For Gas Furnaces

PART #	OUTSIDE DIMENSION	DUCT OPENING	FILTER SIZE
ACG 1425-3	W 15 ^{3/8} H 3 ^{3/4} L 28 ^{3/8}	W 12 ^{7/8} L 26 ^{1/2}	14 x 25
ACG 1625-3	W 17 ^{3/8} H 3 ^{3/4} L 28 ^{3/8}	W 14 ^{7/8} L 26 ^{1/2}	16 x 25
ACG 2025-3	W 21 ^{3/8} H 3 ^{3/4} L 28 ^{3/8}	W 18 ^{7/8} L 26 ^{1/2}	20 x 25
ACG 2424-3	W 25 ^{3/8} H 3 ^{3/4} L 28 ^{3/8}	W 22 ^{7/8} L 26 ^{1/2}	24 x 24
ACG 3025-3	W 31 ^{3/8} H 3 ^{3/4} L 28 ^{1/2}	W 28 ^{5/8} L 26 ^{1/4}	30 x 25

Accommodator Tall

Specifications For Gas Furnaces

PART #	OUTSIDE DIMENSION	DUCT OPENING	FILTER SIZE
ACG 1425-6	W 15 ^{3/8} H 5 ^{3/4} L 28 ^{3/8}	W 12 ^{7/8} L 26 ^{1/2}	14 x 25
ACG 1625-6	W 17 ^{3/8} H 5 ^{3/4} L 28 ^{3/8}	W 14 ^{7/8} L 26 ^{1/2}	16 x 25
ACG 1625-H	W 17 ^{3/8} H 5 ^{5/8} L 25 ^{1/2}	W 14 ^{1/2} L 23 ^{1/3}	16 x 25
ACG 2025-6	W 21 ^{3/8} H 5 ^{3/4} L 28 ^{3/8}	W 18 ^{7/8} L 26 ^{1/2}	20 x 25
ACG 2424-6	W 25 ^{3/8} H 5 ^{3/4} L 28 ^{3/8}	W 22 ^{7/8} L 26 ^{1/2}	24 x 24
ACG 3025-6	W 31 ^{3/8} H 5 ^{3/4} L 28 ^{1/2}	W 28 ^{5/8} L 26 ^{1/4}	30 x 25

ELECTRIC FURNACE ACCESSORIES



Accommodator Filter Housing from McDaniel Metals

Accommodator Tall	Specifications For Electric Furnaces									
	PART #	OUTSIDE DIMENSION			DUCT OPENING		FILTER SIZE			
	ACE 1420-6	W	H	L	W	L	14 x 20			
		15 ³ / ₈	5 ³ / ₄	22	12 ⁷ / ₈	19				
	ACE 1620-6	W	H	L	W	L	16 x 20			
		17 ³ / ₈	5 ³ / ₄	22	14 ⁷ / ₈	19				
	ACE 1625-6	W	H	L	W	L	16 x 25			
		19 ¹ / ₂	5 ³ / ₄	25 ¹ / ₂	17 ¹ / ₄	20 ¹ / ₄				
	ACE 2020-6	W	H	L	W	L	20 x 20			
		21 ³ / ₈	5 ³ / ₄	22	18 ⁷ / ₈	19				
	ACE 2025-6N	W	H	L	W	L	20 x 25			
		21 ³ / ₈	5 ³ / ₄	25	18 ³ / ₄	21 ³ / ₈				
	ACE 2025-6	W	H	L	W	L	20 x 25			
		26 ³ / ₈	5 ³ / ₄	22	23 ⁷ / ₈	19				

Accommodator Short	Specifications For Electric Furnaces									
	PART #	OUTSIDE DIMENSION			DUCT OPENING		FILTER SIZE			
	ACE 1420-3	W	H	L	W	L	14 x 20			
		15 ³ / ₈	3 ³ / ₄	22	12 ⁷ / ₈	19				
	ACE 1620-3	W	H	L	W	L	16 x 20			
		17 ³ / ₈	3 ³ / ₄	22	14 ⁷ / ₈	19				
	ACE 1625-3	W	H	L	W	L	16 x 25			
		19 ¹ / ₂	3 ³ / ₄	25 ¹ / ₂	17 ¹ / ₄	20 ¹ / ₄				
	ACE 2020-3	W	H	L	W	L	20 x 20			
		21 ³ / ₈	3 ³ / ₄	22	18 ⁷ / ₈	19				
	ACE 2025-3N	W	H	L	W	L	20 x 25			
		21 ³ / ₈	3 ³ / ₄	25	18 ³ / ₄	21 ³ / ₈				
	ACE 2025-3	W	H	L	W	L	20 x 25			
		26 ³ / ₈	3 ³ / ₄	22	23 ⁷ / ₈	19				

*3 represents 3³/₄" overall height of filter base .
(handles 1 or 2 inch filters)

*6 represents 5³/₄" overall height of filter base.
(handles 1, 2, or 4 inch filters)

- New Hinged Door For Easy Access
- Accommodates Standard Filters
- Gaskets Provide Tight Seal
- Completely Insulated
- Sizes To Fit All Furnaces Through 5 Tons
- Embossed, Heavy Gauge Steel Construction
- Made in the USA

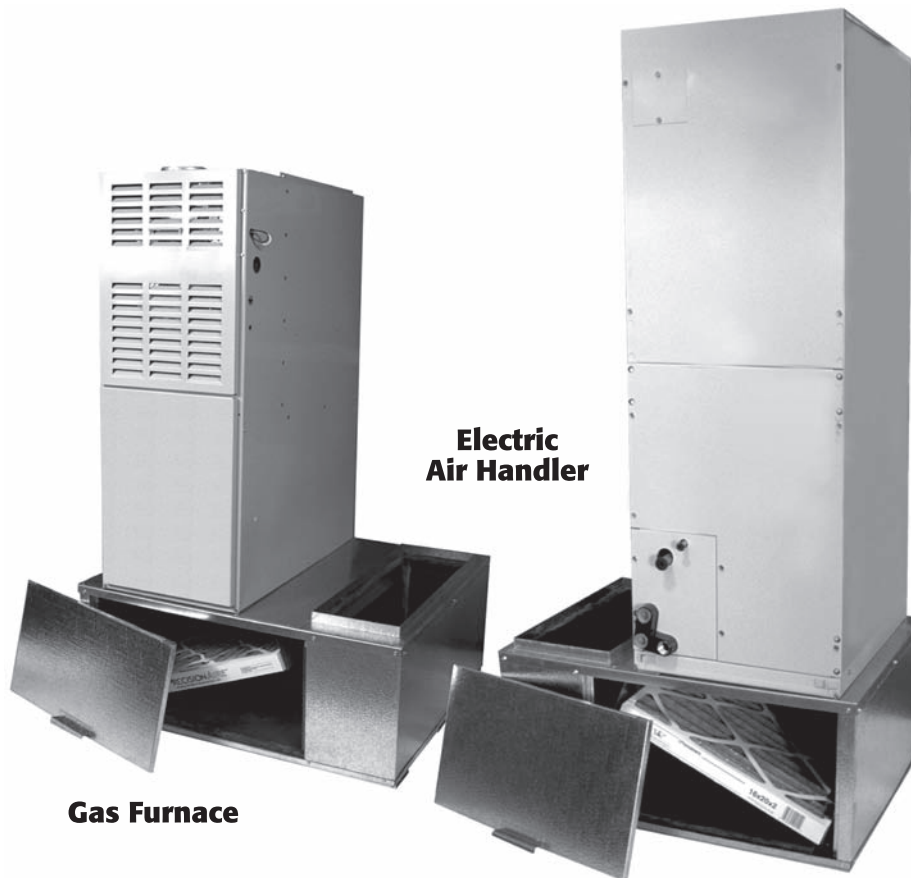


Made in USA

Labor Saver Filter Housing



For An Easy Installation



- Adjustable Filter Rack 1", 2", 4"
- Uses Standard Filter Sizes
- Easy Access From Both Sides
- Available in 4 Sizes (1.5 - 3 Ton)
(3.5 - 5 Ton)
- No need to construct platform
saves time and money
- Lined with 1" Insulation
- Embossed Heavy Gauge
Steel Construction
- Filter Positioned on an Angle
for Maximum Surface Area
- No Hardware to Remove for
Filter Access
- Made In USA
- Designed for gas furnaces
- Electric Air Handles

Labor Saver Filter Housing

An Affordable Solution for Residential and Light Commercial Applications. The Labor Saver enables the homeowner access to the filter without entering the furnace.

The Labor Saver enables the homeowner access to the filter without entering the furnace

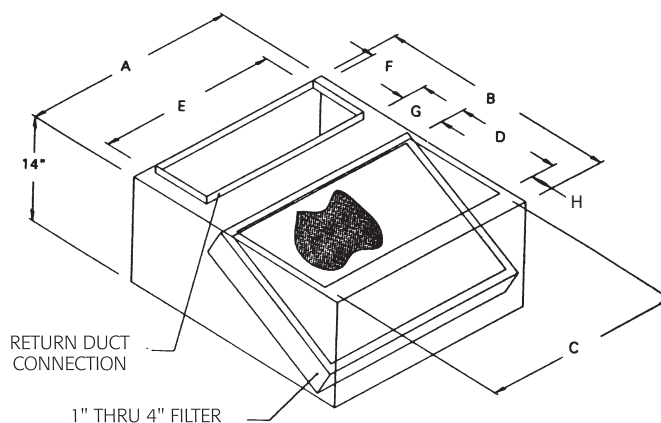
Labor Saver Filter Housing

For An Easy Installation



SHOWN
WITH RIGHT HAND ARRANGEMENT
BOX REVERSES FOR LEFT HAND
ARRANGEMENT

- The Labor Saver Filter Housing is Easily Installed with Most Central Heating & Cooling Systems
- The Labor Saver Was Designed For The New Age of Shortened Furnaces
- The Labor Saver Allows Installation To Be Fast & Efficient By Raising The Furnace To The Plenum
- In Most Cases Eliminates Dual Side Returns

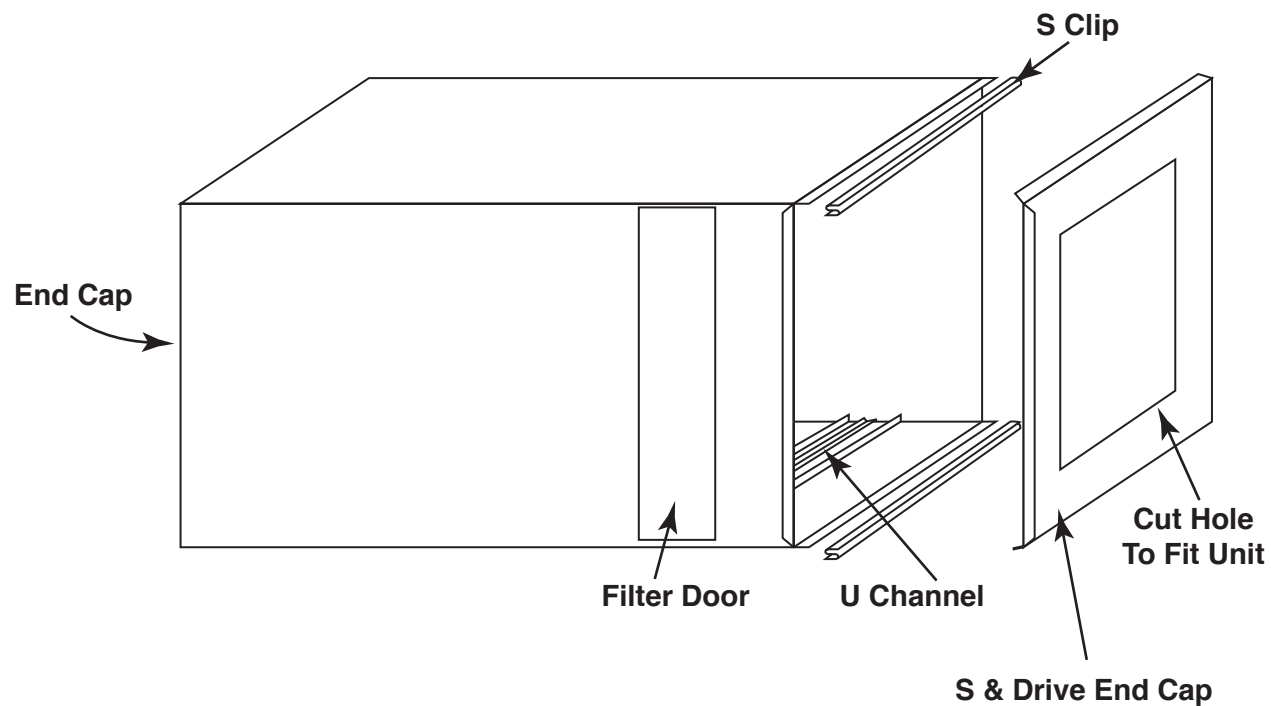


- Labor Saver Was Designed To Save Contractor Time and Labor With A Professional Installation.
- With the Labor Saver you have 1", 2", or 4" Filter Option
- Filter May Be Purchased At Your Local Wholesaler or Distributor
- Made in USA

Labor Saver Filter Housing

MODEL	A	B	C	D	E	F	G	H	FILTER SIZE STANDARD
LS 2832	28 1/2	32	26 1/2	13 1/2	24	8	6 1/2	3	20 X 25
LS 2840	28 1/2	40	26 1/2	19	24	10	7	3	24 X 24
LS 2843	28 1/2	43	26 1/2	19	24	12	7	3	24 X 24
LS 2232	22 1/2	32	20 1/2	14 1/2	20 1/2	9 1/2	5	2	20 X 20
LS 2240	22 1/2	40	20 1/2	20	20 1/2	12	5	2	20 X 25

RAFP 2025 Return Air Filter Plenum



1. Cut hole in S & drive endcap to fit unit return air and attach to unit
2. Attach plenum to S & drive end cap using S's & drives provided
3. Install desired filter and door

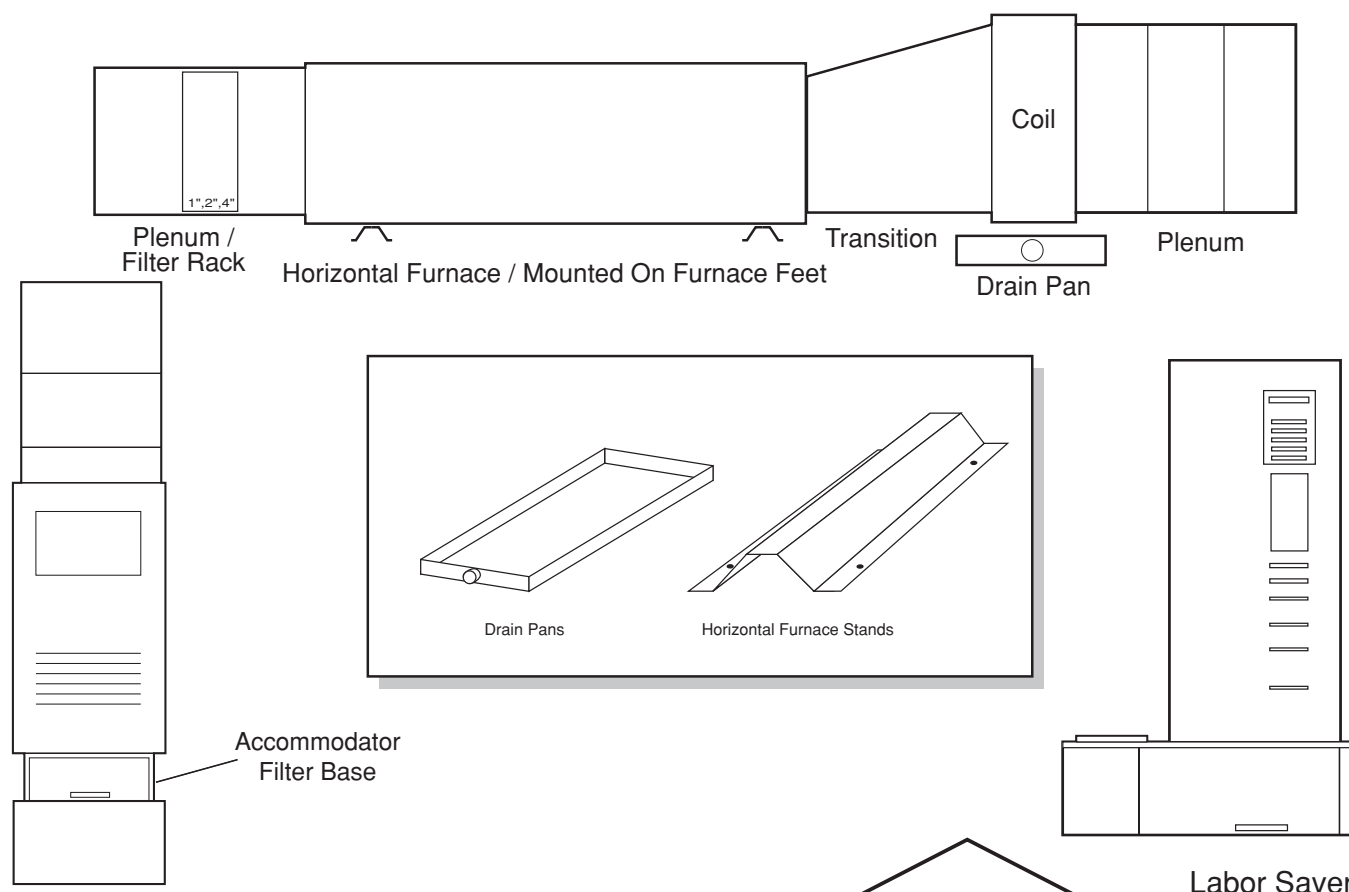
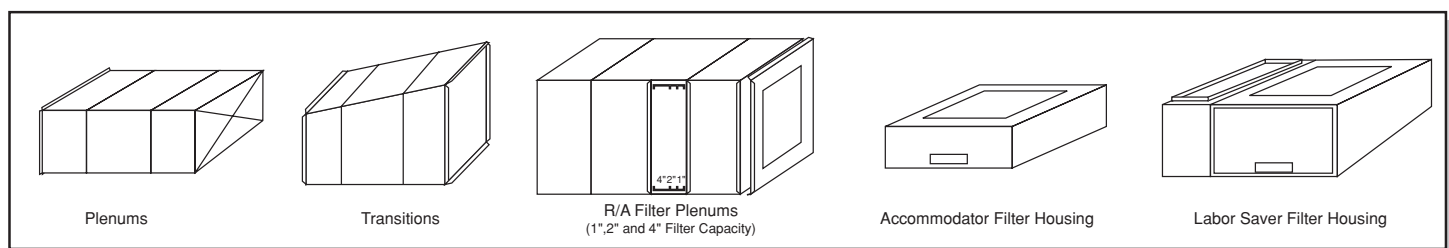


Note: For 4" filter, remove U Channel Spacers.

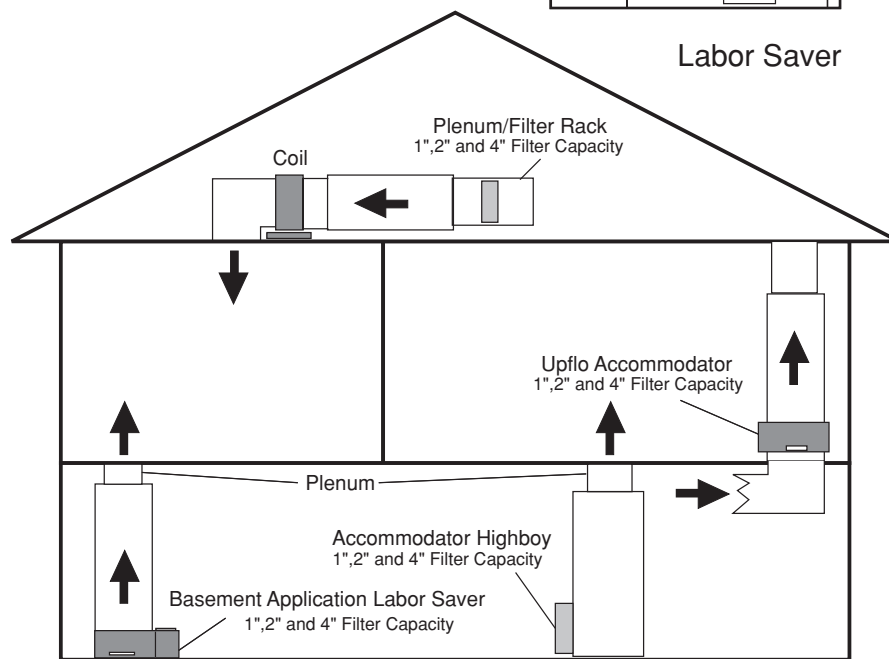


Available in 2' or 3' lengths
Fits most furnaces & air handlers through 5 ton.

PLENUMS • TRANSITIONS • FILTER HOUSING

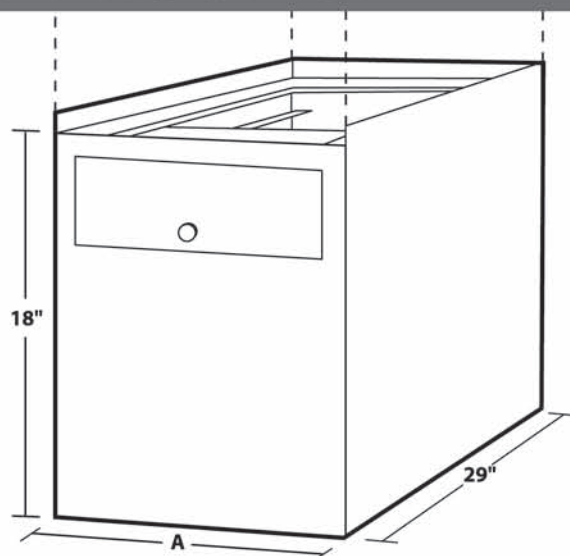


- All Transitions, Plenums, and Return Air Cans are Individually Boxed and Labeled to Your Specification
- Boxing Makes Warehousing and Shipping Much More Efficient And Convenient with Less Damage and Injury
- Heavy Ga. Steel Drain Pans with Welded Corners and Welded Steel Nipples.
- Transitions, Plenums, Return Air Cans Vary in Size and Styles Let us Quote You on the Requirements in Your Market.



Upflow Filter Plenum

from McDaniel Metals



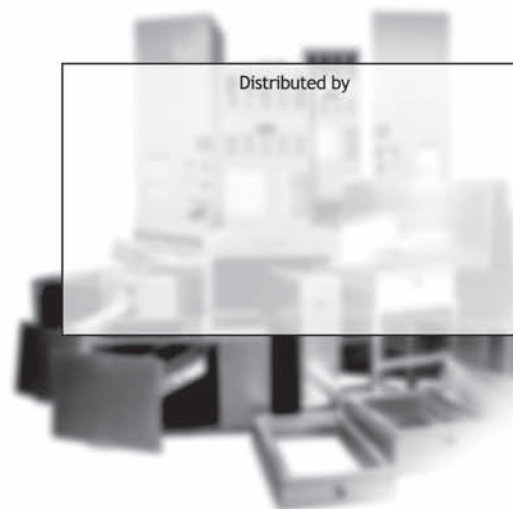
For Gas UpFlow Furnaces

MODEL	A	FILTER
UFFPG14	15 1/2	14 X 25
UFFPG17	17 1/2	16 X 25
UFFPG21	21 1/2	20 X 25
UFFPG25	25 1/2	24 X 24

The UpFlow Filter Plenum Features:

- Spring Hinged Door for Easy Access
- Door with Gasket for Tight Seal
- Adjustable Filter Rack 1", 2", & 4"
- Uses Standard Filter Sizes
- Available in 4 Sizes (1.5 - 3 Ton) (3.5 - 5 Ton)
- Return Opening Sides OR Back
- No Need to Construct Platform - Saves Time and Money
- 24 Gauge Steel Construction
- No Hardware to Remove for Filter Access
- Made in USA
- Designed for Gas Furnaces and Electric Air Handlers

The UpFlow Filter Plenum is an affordable solution for residential and light commercial applications. The Upflow Filter Plenum enables the homeowner access to the filter without entering the furnace.



phone

fax

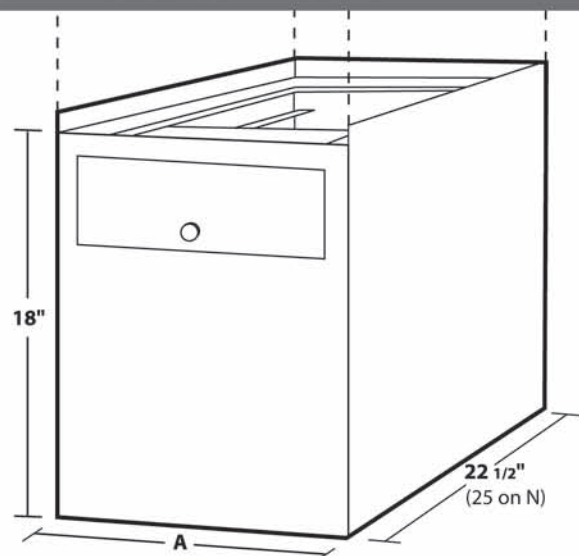
281.987.8400 281.987.9494

McDaniel Metals 1318 Buschong • Houston • Texas 77039



Upflow Filter Plenum

from McDaniel Metals



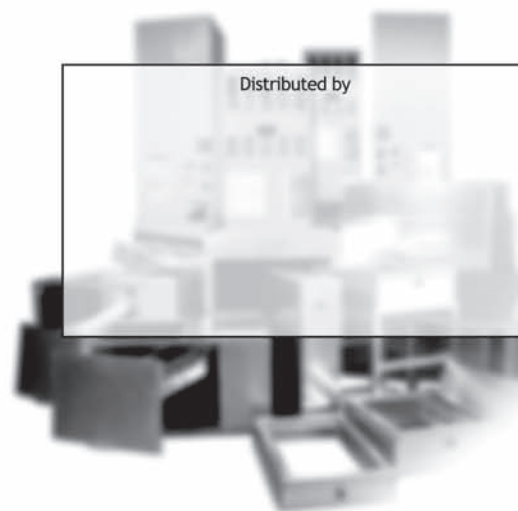
For Electric Air Handlers

MODEL	A	FILTER
UFFPE14	15 1/2	14 X 20
UFFPE17	17 1/2	16 X 20
UFFPE21	21 1/2	20 X 20
UFFPE24	26 1/2	25 X 20
UFFPE24N	21 1/2	20 x 25

The UpFlow Filter Plenum Features:

- Spring Hinged Door for Easy Access
- Door with Gasket for Tight Seal
- Adjustable Filter Rack 1", 2", & 4"
- Uses Standard Filter Sizes
- Available in 4 Sizes (1.5 - 3 Ton) (3.5 - 5 Ton)
- Return Opening Sides OR Back
- No Need to Construct Platform - Saves Time and Money
- 24 Gauge Steel Construction
- No Hardware to Remove for Filter Access
- Made in USA
- Designed for Gas Furnaces and Electric Air Handlers

The UpFlow Filter Plenum is an affordable solution for residential and light commercial applications. The Upflow Filter Plenum enables the homeowner access to the filter without entering the air handler.



phone

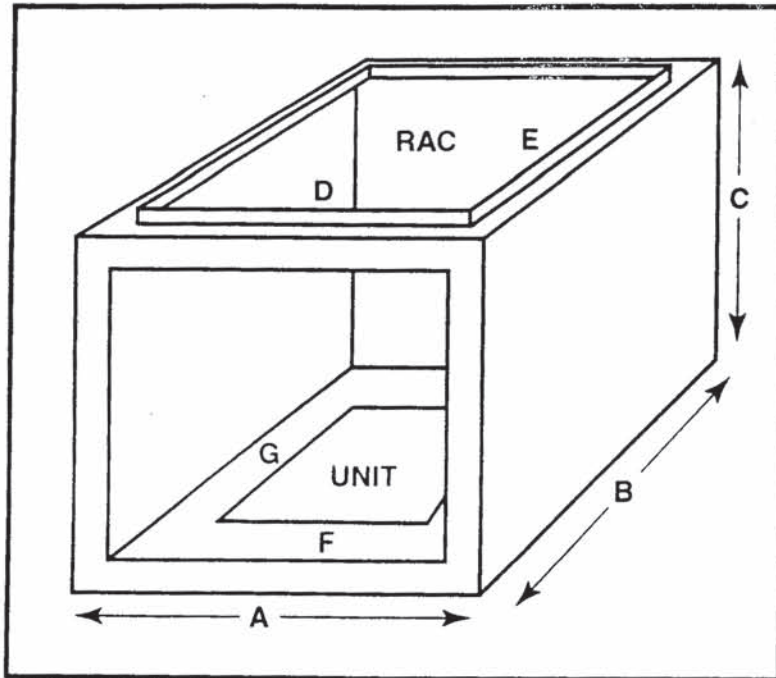
fax

281.987.8400 281.987.9494

McDaniel Metals 1318 Buschong • Houston • Texas 77039



For A Professional Installation



Counterflow Filter Housing

The Counterflow Filter Housing enables the homeowner access to the filters without interference from the vent pipe when changing a filter.

Physical Data & Specifications

MODEL NUMBER	OVERALL			DUCT OPENING		UNIT OPENING		QTY	FILTER SIZE
	A	B	C	D	E	F	G		
CF1	15 ³ / ₄	21 ³ / ₈	12	13 ³ / ₄	19 ⁷ / ₈	12 ⁵ / ₈	20 ¹ / ₈	2	10x20x1
CF2	18 ³ / ₄	21 ³ / ₈	12	16 ³ / ₄	19 ⁷ / ₈	16 ¹ / ₈	20 ¹ / ₈	3	10x20x1
CF3	23 ¹ / ₄	21 ³ / ₈	12	21 ¹ / ₄	19 ⁷ / ₈	20	20 ¹ / ₈	3	10x20x1
CF4	27 ³ / ₄	21 ³ / ₈	12	25 ³ / ₄	19 ⁷ / ₈	23 ³ / ₈	20 ¹ / ₈	4	10x20x1

- Accommodates Standard Filters
- Counterflow Housing
- Embossed Heavy Gauge Steel Construction
- Completely Insulated

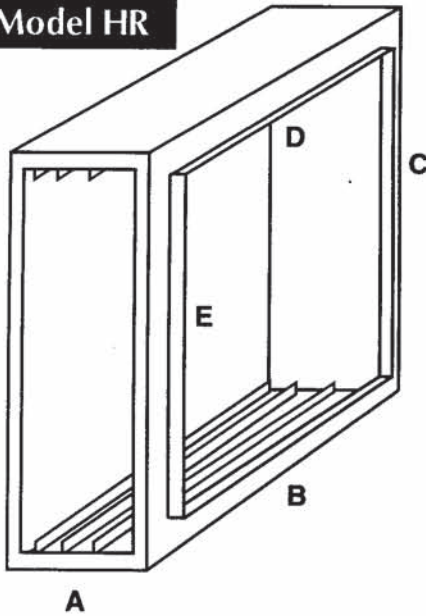
- 4 Sizes Through 5 Ton
- Easy Access To Filters
- Filters Positioned On Angles For Maximum Surface Area
- Made In USA

Manufactured By
McDaniel Metals, Inc.
1318 Buschong
Houston, TX. 77039

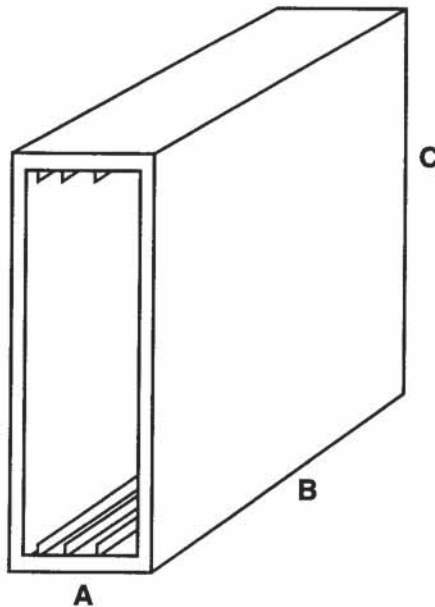
For Order & Technical
Information:
(281) 987-8400
Fax (281) 987-9494

For A Professional Installation

Model HR



Model HRB



Horizontal Filter Housing

The Horizontal filter housing gives the home owner the option of a 1", 2" or 4" filter. The Horizontal Filter Housing gives you many choices of filter types and sizes.

Physical Data & Specifications

MODEL NUMBER	OVERALL			DUCT OPENING		FILTER SIZE
	A	B	C	D	E	
HR20	6 5/8	25 1/2	22	19 3/4	19	20x25
HR25	6 5/8	20 1/2	27	19 3/4	19	20x25
HRB20	6 5/8	25 1/2	22	—	—	20x25
HRB25	6 5/8	20 1/2	27	—	—	20x25

- Standard Filter 1", 2" or 4"
- For Horizontal Applications
- Individually Boxed For Convenient Shipping And Warehousing
- Completely Insulated
- 4 Models To Choose From

- HR Model Is Open On One Side And Blocked Off On The Other Side, Cut Blocked Side To Your Furnace Specifications
- HRB Model Is Blocked Off On Both Sides, Cut To Fit Your Furnace Specifications And The Existing Plenum

Manufactured By
McDaniel Metals, Inc.
1318 Buschong
Houston, TX. 77039

For Order & Technical
Information:
(281) 987-8400
Fax **(281) 987-9494**