

CLTM CL Series

STEAM
Oil-Fired
BOILER



New Yorker[®]
RESIDENTIAL HEATING BOILERS

Why Hydronic Heat by New Yorker?



New Yorker has produced a variety of boilers for a wide range of applications with simple installation and service. As part of the New Yorker family of products, the CL oil-fired cast iron boiler delivers the proven features that have made New Yorker the choice of heating professionals nationwide.



For Years of Comfort

New Yorker cast iron boilers provide years of home heating comfort by combining economical efficiency, durable construction, and reliability.

An Economical Choice

The CL cast iron heat exchanger and boiler design maximize heat transfer for the most efficient use of fuel—saving valuable heating dollars. With an optional built-in tankless domestic water heater, it can also provide abundant hot water for your household. Add annual fuel efficiencies up to 84.1% and the CL Series is an economical choice in home heating.

Durable

The CL Series' cast iron heat exchanger, with metal section connectors, is immune to petroleum based chemicals such as anti-freeze, which can deteriorate rubber seals used by some competitors. This means a longer boiler life and peace of mind for you.

Reliable

The New Yorker CL Series Boiler uses only name brand controls and accessories, giving you years of comfortable, reliable heating. The heat exchanger construction also meets the requirements of the ASME boiler and pressure vessel code which ensures the quality and safety of your boiler.

New Yorker stands behind the heat exchanger of the CL Series with a 10-year Limited Warranty. See your installing contractor for more warranty information.

Easy to Own

- The New Yorker CL Series cast iron heat exchanger is accessible from the top for easy cleaning and maintenance.
- A burner cast iron swing door provides easy access to the combustion chamber for fast and easy servicing.
- The CL Series is available completely factory assembled and wired for ease of installation which saves time and money.
- The CL is designed with all the necessary tapings and controls to make steam replacements easy.
- Adding a boiler powered indirect water heater provides abundant hot water for domestic use, hot tubs, spas, and whirlpools.

Advantages of the CL Series

ADVANTAGES

Top Quality Components

are standard, including Beckett burner and Honeywell controls

- 15 PSI safety valve
 - PA404A pressuretrol
 - Gauge glass set
 - MM PS801 Probe LWCO
- are also standard

The Cast Iron Heat Exchanger

provides long life and dependability.

Flame Retention Burner

and natural draft firing ensure high efficiency combustion.

Metal Section Connectors

are resistant to chemicals and increase the longevity of your boiler.



Cast Iron Burner Swing Door

allows easy access to the combustion chamber for ease of service.

Factory Installed Tankless Domestic Water Heater (optional)

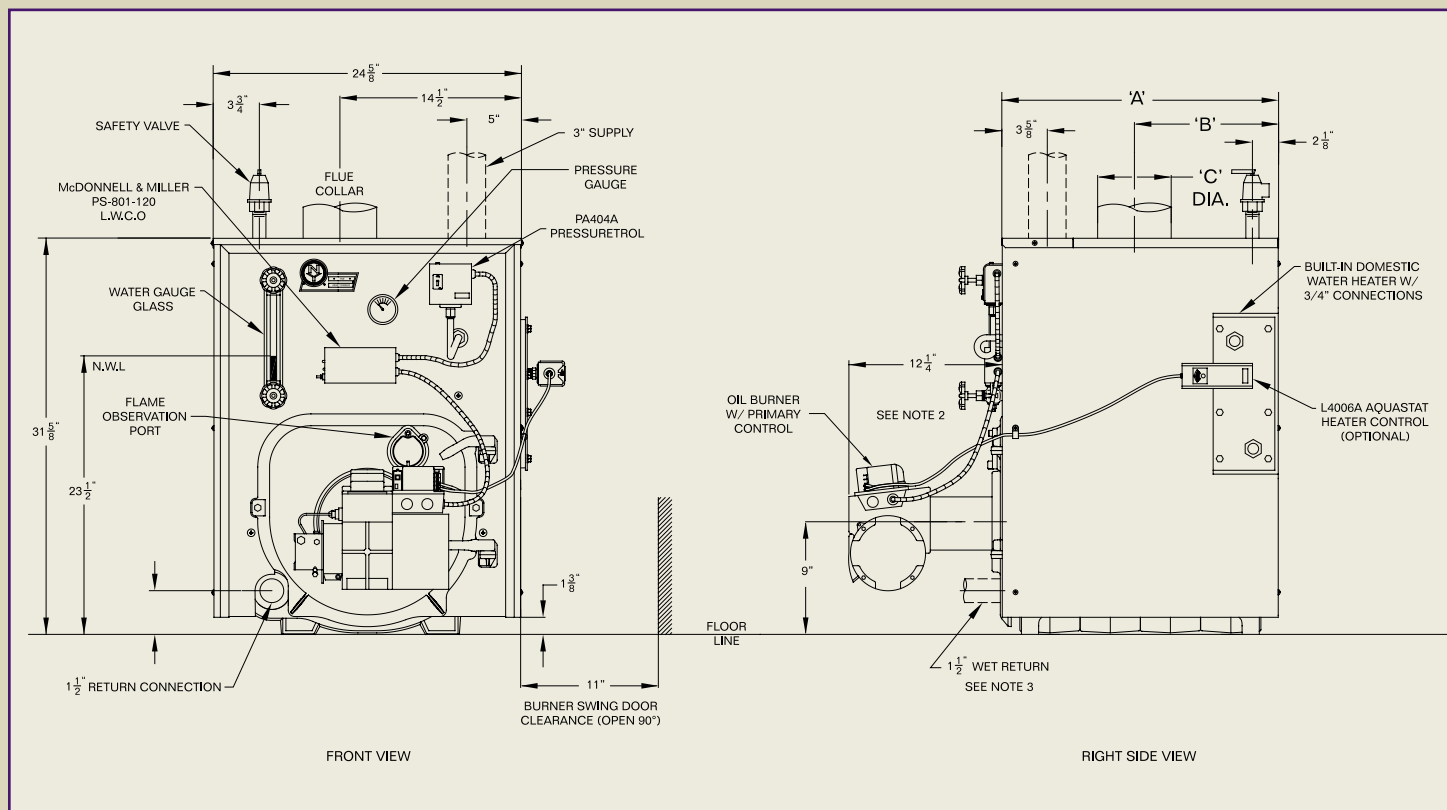
combines your home heating and hot water into one heat source — the CL boiler.

Deluxe Insulated Jacket

increases efficiency by reducing stand-by heat losses.

Steam Ratings & Specifications

Model	DOE Heating Capacity	Net I=B=R Steam MBH	Net I=B=R Steam Sq. Ft.	Net I=B=R Firing Rate	AFUE %	Minimum Chimney Requirements	Tankless Heater GPM	Jacket Depth 'A'	Jacket Rear to Center of Flue 'B'	Flue Collar Diameter 'C'	Approx. Shipping Weight
CL3-091	78	56	233	0.65	84.1	8" x 8" x15'	2.25	17-3/8"	8-1/4"	6"	570 lbs.
CL3-105	90	68	283	0.75	83.8	8" x 8" x15'	2.25	17-3/8"	8-1/4"	6"	570 lbs.
CL3-140	119	89	370	1.00	82.7	8" x 8" x15'	2.50	17-3/8"	8-1/4"	6"	570 lbs.
CL4-126	108	81	338	0.90	84.1	8" x 8" x15'	2.50	22-3/8"	10-7/8"	7"	690 lbs.
CL4-175	149	112	467	1.25	83.5	8" x 8" x15'	2.75	22-3/8"	10-7/8"	7"	690 lbs.
CL4-210	177	133	554	1.50	82.6	8" x 8" x15'	3.00	22-3/8"	10-7/8"	7"	690 lbs.
CL5-168	144	108	450	1.20	83.7	8" x 8" x15'	2.75	27-3/8"	13-3/8"	8"	810 lbs.
CL5-245	207	155	646	1.75	82.5	8" x 8" x15'	3.25	27-3/8"	13-3/8"	8"	810 lbs.
CL5-280	235	176	733	2.00	82.3	8" x 8" x15'	3.50	27-3/8"	13-3/8"	8"	810 lbs.



- Notes:
1. Tankless coil opening not present on less-coil boilers.
 2. Piping shown hidden not furnished with boiler.
 3. Drain valve shipped loose (not shown).



© 2010 New Yorker Boiler Company, Inc.
 Hatfield, PA
 (215) 855-8055
 www.newyorkerboiler.com
 PL81420101007 - 9/10 - 7.5Ms

