



# Service Letter

Ariens Company  
655 W. Ryan St.  
Brillion, WI 54110-0157  
www.ariens.com

**Product Family: 2009 936 Series Tractors, 901 and 902 Series Tillers**

**Subject: Product Registration, Warranty and Model Numbers**

**Dealer Action: Equipment Information**

<b>Ariens Model</b>	<b>Description</b>	<b>Serial Number Range</b>
936037	42" Gear Drive Tractor	000101 & Up
936038	42" Hydro Drive Tractor	000101 & Up
936039	46" Hydro Drive Precision Tractor	000101 & Up
936040	54" Hydro Drive Precision Tractor	000101 & Up
936041	42" Gear Drive Tractor, CARB	000101 & Up
901028	17" Rear Tine Tiller	000101 & Up
902032	24" Front Tine Tiller	000101 & Up

Starting with the 2009 lawn and garden season, Ariens Company has branded five tractor and two tiller models manufactured by another company. These units may be retailed through the dealer network or through The Home Depot.

When registering these units with Ariens Company and filing warranty claims on the Dealer ExtraNet, or when searching for parts information on PartSmart or Parts Radar, use the usual Ariens six-digit model and serial numbers to identify the equipment.

The model and serial number labels supplied with these units contain additional information important to the manufacturer, and they look different from the usual Ariens-style model/serial labels. On tractors, the model/serial number label is behind the seat. On the front tine tillers the model/serial number label is near the depth stick. On the rear tine tillers the model/serial number label is near the tine cover.

The attached Model and Serial Number Locator file shows you where to find these labels and how to identify the Ariens six-digit model and serial numbers on the label. This locator file is also being linked to the Product Registration Page of [www.ariens.com](http://www.ariens.com) for customer convenience.

If you have questions about product registration or warranty filing for these products, contact Ariens Technical Service, 1-888-927-4367.



## How to Identify Model and Serial Numbers...

Snow Products

Riding Lawn Products

Walk-Behind Lawn Products

Chore Products

**Your equipment should contain a Model and Serial Number Label similar to one of the styles below.**

**Model Numbers are six digits in length and begin with the number “9” (except very early models).**

**For help in locating the Model and Serial Number Label, please click on the tab above that closest describes your equipment.**

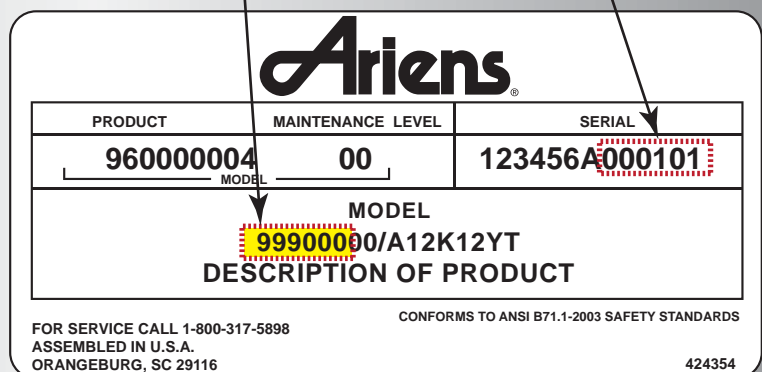
Model Number

Serial Number



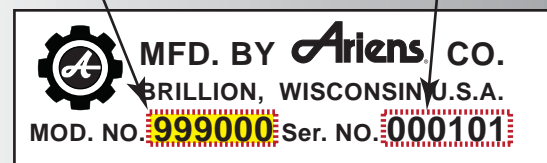
Model Number

Serial Number



Model Number

Serial Number



[Home](#)

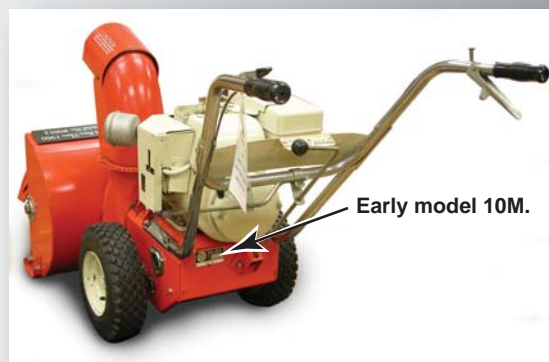
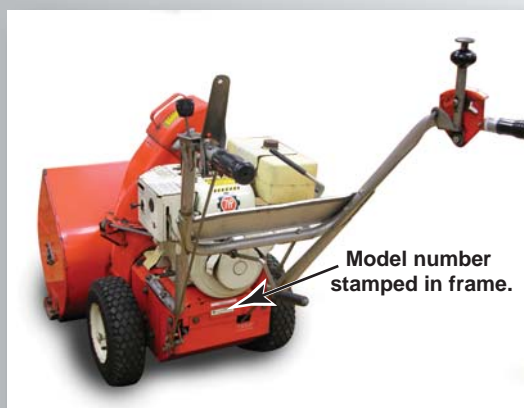
Model and Serial Number Labels for the Sno-Thro product line are located on the rear or left side of the Main Frame, below the operator's position.

[Snow Products](#)[Riding Lawn Products](#)[Walk-Behind Lawn Products](#)[Chore Products](#)

#### Model and Serial Number Label locations.



Early models may have the model and serial numbers stamped in the frame. Model numbers may also contain the letter "M" as in "10M".

[Back](#)[More](#)



Home

Model and Serial Number Labels for the Sno-Thro product line are located on the Main Frame or handlebar of the unit, below the operator's position.

- Snow Products
- Riding Lawn Products
- Walk-Behind Lawn Products
- Chore Products

Model and Serial Number Label locations.



Back



[Home](#)

Please identify the type of Riding Lawn Product you are looking for...

[Snow Products](#)

[Riding Lawn Products](#)

[Walk-Behind Lawn Products](#)

[Chore Products](#)

### Zero-Turn Mowers



### Riding Tractors



### Stand-On Mowers



### Rear-Engine Riders



[Back](#)

[More](#)







Home

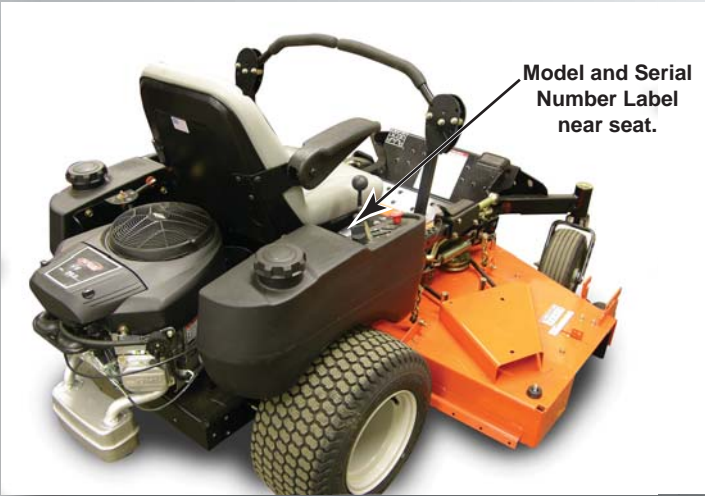
Model and Serial Number Labels for the Zero-Turn product line are located on the Main Frame of the unit.

Snow Products

Riding Lawn Products

Walk-Behind Lawn Products

Chore Products



Back

More





Home

Model and Serial Number Labels for the Riding Tractor product line are located on the Main Frame of the unit.

Snow Products

Riding Lawn Products

Walk-Behind Lawn Products

Chore Products



Back

More







[Home](#)

Model and Serial Number Labels for the Riding Tractor product line are located on the Main Frame of the unit.

[Snow Products](#)

[Riding Lawn Products](#)

[Walk-Behind Lawn Products](#)

[Chore Products](#)



[Back](#)

[More](#)







[Home](#)

Model and Serial Number Labels for the Stand-On product line are located on the Main Frame of the unit.

[Snow Products](#)

[Riding Lawn Products](#)

[Walk-Behind Lawn Products](#)

[Chore Products](#)



Model and Serial  
Number Label.



[Back](#)

[More](#)





Model and Serial Number Labels for the Rear-Engine Rider product line are located on the Main Frame of the unit.

Snow Products

Riding Lawn Products

Walk-Behind Lawn Products

Chore Products





[Home](#)

Model and Serial Number Labels for the Rear-Engine Rider product line are located on the Main Frame of the unit.

[Snow Products](#)

[Riding Lawn Products](#)

[Walk-Behind Lawn Products](#)

[Chore Products](#)



Model and Serial Number Label.



Model and Serial Number Label.

Early Rear-Engine Rider Model numbers may contain letters, as in this 3ML60.



[Back](#)





[Home](#)

Model and Serial Number Labels for the Walk-Behind product line are located on the Main Frame of the unit.

[Snow Products](#)

[Riding Lawn Products](#)

[Walk-Behind Lawn Products](#)

[Chore Products](#)



[Back](#)



Home

## Model and Serial Number Label locations for Chore products.

Snow Products

Riding Lawn Products

Walk-Behind Lawn Products

Chore Products



Back

More





Home

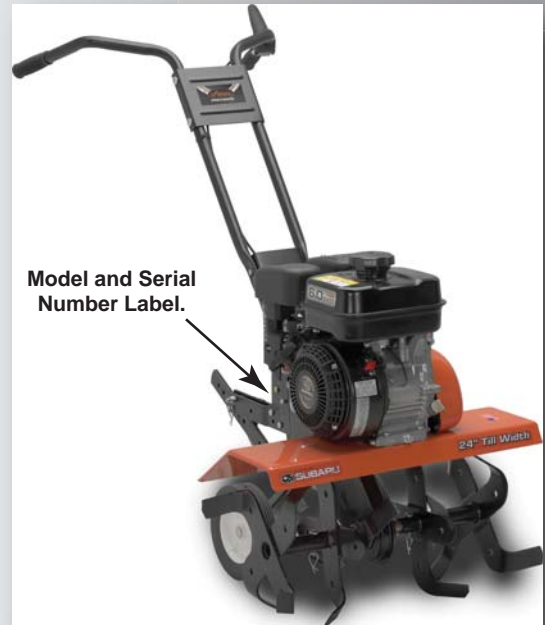
## Model and Serial Number Label locations for Chore products.

Snow Products

Riding Lawn Products

Walk-Behind Lawn Products

Chore Products



Back

More







# Model and Serial Number Label locations for Chore products.

Snow Products

Riding Lawn Products

Walk-Behind Lawn Products

Chore Products



Back