



NOW WITH FACTORY
INSTALLED DRAIN
PAN HEATER OPTION



DAIKIN AURORA MULTI-ZONE HEATING AND COOLING SYSTEMS

1.5-3 TON, 2-4 ZONE SYSTEMS
Up to 20.0 SEER2 / Up to 9.7 HSPF2 / Up to 12.0 EER2
INVERTER (VARIABLE-SPEED) COMPRESSOR
WITH OR WITHOUT DRAIN PAN HEATER (MXLH/MXL)

Today, the air is perfect. Perfect temperature. Perfect humidity. Perfectly clean and fresh, like just after a rainstorm. And the only thing more perfect than this outdoor scenario is that it's all happening inside. Because that's where we work. That's where we play, where we sleep, where we truly live.

And that's why at Daikin, we aim to make the air inside as refreshing as the outside. Better comfort. Better control and efficiency. Better quality. So you can create your own unique ecosystem. And everyday is perfect. **Inside and out.**

Daikin *AURORA* Multi-Zone Heating and Cooling Systems Inverter (Variable-speed) Compressor



Perfecting The Air We Share

A better understanding of how people inhabit their living spaces has led to products designed to create indoor environments that help use energy resources more effectively. Heat pumps extract or reject heat from the outside air, even in cold weather. They use an electrically powered compressor and are extremely effective at

heating and cooling an apartment or a house. Daikin heat pumps are quiet and discreet, and use state-of-the-art technology to keep your energy bills low. With a Daikin heat pump, a large portion of the energy used to heat or cool your home comes from the outside air, a free and infinitely renewable resource.



Comfort

We offer a wide range of products, and always provide you with the ideal solution, whether for an apartment, condo or a house. Our units are quiet with low sound levels and with their specially designed airflow pattern, they create your ideal indoor climate.

Daikin units are designed to include features that let you create your own unique ecosystem. From the wide-angle louver design to the auto-swing and comfortable mode controller settings, effective heating and cooling is ensured throughout the space.

Smart inverter technology



Integrated with an inverter (variable-speed) compressor, Daikin systems deliver the capacity required to maintain desired room conditions, typically reducing energy consumption by up to 30% or more (compared to traditional fixed-speed ducted systems). This technology minimizes temperature fluctuations and provides continuous cooling and heating comfort.

Energy efficiency

Our products are designed to be highly efficient all year round, and their low energy consumption is reflected in low energy bills for you.

Control**

Our expertise makes life easier for you, allowing you to control your system via a smartphone app** or a user-friendly remote control.

Reliability

Daikin products are renowned for their reliability. And you can rely on service to match, with industry leading warranties.*



* Complete warranty details available from your local dealer/contractor or at www.daikincomfort.com. To receive the 12-Year Parts Limited Warranty, online registration must be completed within 60 days of installation. Online registration is not required in California or Québec. The duration of warranty coverages in Texas and Florida differs in some cases.

** Adaptor required.

Daikin *AURORA* Multi-Zone Heating and Cooling Systems

Designed for living: Solutions for colder regions

Living in colder climates doesn't mean a heat pump isn't a viable option to heat each space in your home or business. The outdoor units of this Multi-Zone Daikin *AURORA* heat pump system have been redesigned to withstand extreme weather conditions, even when it is down to -13°F WB (-25°C WB).

Ideal solution for:

- » Primary living areas (For example, master bedrooms and living rooms)
- » Hot or cold rooms
- » Rooms with poor air flow
- » Renovations and remodeling
- » Basements, attics and garages
- » New construction

Premium comfort features:

- » **Energy Efficient** – Up to 20.0 SEER2 / Up to 9.7 HSPF2 / Up to 12.0 EER2 for ultra-efficient cooling and heating operation and reduced operating costs compared to conventional lower-efficiency systems.
- » **Advanced Filtration** – Long life, washable filters.
- » **Enhanced Capacity** – Up to 100% rated heating capacity at 5°F WB (-15°C WB) and continues to operate down to -13°F WB (-25°C WB). Up to 100% rated cooling capacity at 115°F DB (46°C DB).
- » **MXLH models** come with factory installed Drain Pan Heater for cold, humid environments.

Aligning with Goals of:

- » **Decarbonization and Electrification – moving towards clean energy:** An effective source of heat to comfortably offset older or inefficient sources of heat using fossil fuels.

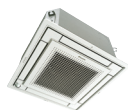
Compatible indoor units:



Daikin *EMURA*

Designed to perfectly balance technological capability and the beauty of aerodynamics

- » Iconic award winning design and engineering excellence
- » Elegant finish in pure matte white or modern silver
- » Two-area intelligent eye sensor controls comfort and allows for energy savings during unoccupied periods
- » Titanium apatite photo-catalytic air purification



Daikin *VISTA*

Unique design that integrates seamlessly into the ceiling

- » Iconic award winning design and engineering excellence
- » Elegant finish in white or silver / white combination
- » DC fan motor and two optional intelligence sensors for energy efficiency
- » Outside air integration possible of up to 2-3% of the nominal indoor air volume



FTXS

Discreet wall mounted unit providing high efficiency and comfort

- » Discreet, stylish front panel blends easily with the wall, and matches all interior decors
- » Dry program allows humidity levels to be reduced without variations in room temperature
- » Intelligent Eye function reduces heating or cooling operation during unoccupied periods



FVXS

Floor mounted unit for optimal heating comfort thanks to dual airflow

- » Its low height enables the unit to fit perfectly beneath a window
- » Can be installed against a wall or recessed
- » Vertical auto swing moves the louver up and down for efficient air and temperature distribution



FDMQ

Ducted Concealed Unit capable of up to .6 esp

- » Higher external static pressure capabilities allow for longer duct runs and easily implementing high MERV filtration with appropriate transitions
- » Drain pan inspection port makes it easy to observe installation flexibility
- » Outside air integration possible



1.5-3 TON, 2-4 ZONE SYSTEMS

Up to 20.0 SEER2 / Up to 9.7 HSPF2 / Up to 12.0 EER2
INVERTER (VARIABLE-SPEED) COMPRESSOR

Flexible options providing high efficiency and comfort

The Daikin *AURORA* Multi-Zone System is a flexible solution for individual zone comfort. Connecting up to 4 indoor units to a single outdoor unit reduces installation space and costs while maximizing comfort and energy efficiency. With a choice of indoor unit types in a wide range of capacities, Daikin Multi-Zone Systems allow mix and matched combinations. Whether your rooms are large or small, Daikin units have the capacities to provide the climate you want and which suit your budget.



Outdoor unit features:



Outdoor Unit Quiet Operation can reduce sound levels by 3dB for times when quieter operation is needed.

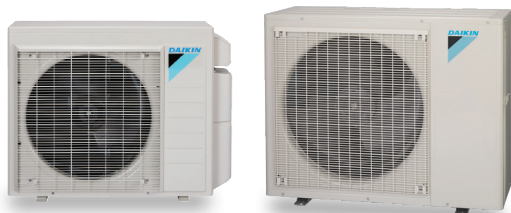


Auto-Restart mode allows the unit to memorize the operation mode, airflow and temperature settings. Should there be a power failure when the unit is in operation, it will automatically return to the same operating conditions when the power is restored.



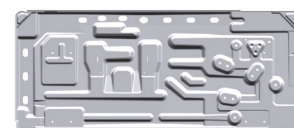
Intelligent Defrost Mode* – The outdoor unit will optimize the duration, and frequency, of defrost operation based on where the system is installed and how it's used. This mode will help provide longer heating operation time for additional comfort to occupants (compared to HVAC systems without this function).

*Available on 4MXL only



Optimized drain pan

- » Newly designed drain pan on outdoor unit to help prevent condensate from freezing and causing damage to the fan and coil.
- » Newly Launched MXLH models have factory installed Drain Pan Heater combined with industry leading drain pan drainage. This combination ensures performance in cold, wet environments.



Note: 4MXL drain pan shown

Knowledge is power

The new minimum efficiency standards are based upon new metrics (SEER2/EER2/HSPF2) derived from a new test procedure (M1) rather than the historical metrics (SEER/EER/HSPF) from the old test procedure (M).

Testing procedures and requirements for developing efficiency ratings will now be more stringent with the new 2023 DOE regulations. The current M testing procedure is being replaced by the M1 testing procedure for 2023 compliance.

Why is COP important?

The COP of a heat pump is the ratio of: $COP = \frac{\text{energy out}}{\text{energy in}}$
When the COP is >1, the result is a system providing more heating energy than energy consumed. As the COP2 increases, the higher the efficiency — resulting in lower utility costs.

	Up to	
20.0	12.0	
SEER2	EER2	
9.7	4.26	
HSPF2	COP2	

Daikin *AURORA* Multi-Zone Heat Pump Efficiency Ratings

COP |  |  |  | **AURORA**
Up to 4.26
(Wall Mount Unit)



You're always in control.

Individual comfort and control

Daikin systems have an available infrared remote controller allowing you to access all functions at the click of a button.

From anywhere in the world. Or your living room.

It can happen to anyone. You forgot to change the temperature of your heat pump system or air conditioner before leaving the house, or you will be delayed returning home and wish to avoid needlessly heating or cooling your home. What in the past would have resulted in wasted energy is no longer a problem. With the DKN App, you are always in control. You can use your tablet or smart-phone to access your Daikin system via the internet*.



* Requires purchase and installation of AZAI6WSPDKA or AZAI6WSPDKB Wi-Fi adaptors depending on the indoor unit.

Daikin One+ Smart Thermostat



The Daikin *One+* smart thermostat is now available for single and multi-zone indoor unit models. With the new translation adaptor, connecting the Daikin *One+* smart thermostat provides several user features including remote monitoring, control and geofencing using the Daikin *One* home app, *Google*, and *Amazon* voice assistants. Learn more at www.daikinone.com.

** Note that the handheld remote that comes with some indoor units should not be used together with the Daikin *One+* smart thermostat or Daikin *One* lite thermostat

Daikin One Lite Thermostat



The Daikin *One* lite connected thermostat is compatible with most Daikin single and multi-zone systems and can be linked via Wi-Fi to the Daikin *One* home app for control from an iOS or Android phone or tablet. In addition, the Daikin *One* lite connected thermostat can be voice controlled with *Amazon Alexa* or *Google Assistant*, plus homeowners can program up to four scheduled events for efficiency and comfort.

Daikin DKN Plus Interface

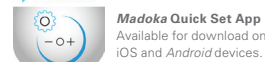


The new Daikin DKN Plus Interface (AZAI6WSPDKC) enables the energy-efficient control of Daikin air conditioners by a third-party thermostat or an automation system. With this interface, third-party devices or systems can control the Single Zone and Multi-Zone indoor units through DKN Cloud NA App via Wi-Fi, Cloud API, Modbus®, *BACnet*™ MS/TP, or thermostat relay contacts. This interface can be commissioned easily through the DKN Cloud NA app via Bluetooth® Low Energy (BLE). Learn more at www.daikinac.com.

Daikin Madoka Remote Controller



Daikin is pleased to introduce the *Madoka* remote controller for the North American FDMQ and FFQ (P1P2) indoor units. The *Madoka* features a sleek and stylish design with an intuitive interface including touch button control. It retains advanced functions for indoor unit control. It can be commissioned and managed with ease through a Bluetooth® configuration app or via the onboard menus. The *Madoka* provides 3 configurable display modes: Text (default), Icon, and Scale to help meet project and occupant needs. Learn more at www.daikinac.com.



SPECIFICATIONS

Outdoor Units	2-Port (2MXL18WMVJU9)	AHRI#	3-Port (3MXL24WMVJU9)	AHRI#	4-Port (4MXL36WVJU9)	AHRI#
Non-Ducted	16.0 SEER2 / 8.7 HSPF2 / 12.0 EER2	210722664	18.0 SEER2 / 9.7 HSPF2 / 11.7 EER2	210722665	20.0 SEER2 / 9.0 HSPF2 / 11.7 EER2	210722666
Ducted	14.3 SEER2 / 7.7 HSPF2 / 9.0 EER2	210725100	14.9 SEER2 / 7.8 HSPF2 / 8.5 EER2	210725101	15.9 SEER2 / 8.1 HSPF2 / 9.3 EER2	210725102
Mixed	15.15 SEER2 / 8.2 HSPF2 / 10.5 EER2	210800988	16.45 SEER2 / 8.75 HSPF2 / 10.1 EER2	210800989	17.95 SEER2 / 8.55 HSPF2 / 10.5 EER2	210800990

NEW! MXLH line with Factory installed Drain Pan Heaters

Outdoor Units	2-Port (2MXLH18WMVJU9)	AHRI#	3-Port (3MXLH24WMVJU9)	AHRI#	4-Port (4MXLH36WVJU9)	AHRI#
Non-Ducted	16.0 SEER2 / 12.0 EER2 / 8.5 HSPF2	212604424	18.0 SEER2 / 11.7 EER2 / 9.3 HSPF2	212604425	20.0 SEER2 / 11.7 EER2 / 8.8 HSPF2	212604426
Ducted	14.3 SEER2 / 9.0 EER2 / 7.5 HSPF2	212604427	14.9 SEER2 / 8.5 EER2 / 7.5 HSPF2	212604428	15.9 SEER2 / 9.3 EER2 / 7.8 HSPF2	212604432
Mixed	15.15 SEER2 / 10.5 EER2 / 8.0 HSPF2	212604429	16.45 SEER2 / 10.1 EER2 / 8.4 HSPF2	212604430	17.95 SEER2 / 10.5 EER2 / 8.3 HSPF2	212604431

Indoor Units / Dimensions (HxWxD)	Unit Class					
	07	09	12	15	18	24
EMURA (Wall Mount)		FTXR09WVJUW/S9	FTXR12WVJUW/S9		FTXR18WVJUW/S9	
		11 ¹⁵ / ₁₆ x 39 ⁵ / ₈ x 8 ³ / ₈			11 ¹⁵ / ₁₆ x 39 ⁵ / ₁₆ x 8 ³ / ₈	
VISTA (Ceiling Cassette)		FFQ09W2VJU9	FFQ12W2VJU9	FFQ15W2VJU9	FFQ18W2VJU9	
		10 ¹ / ₄ x 22 ⁵ / ₈ x 22 ⁵ / ₈				
FTXS Wall Mount	CTXS07WVJU9	FTXS09WVJU9	FTXS12WVJU9	FTXS15WVJU9	FTXS18WVJU9	FTXS24WVJU9
		11 ⁵ / ₈ x 31 ¹ / ₂ x 8 ⁷ / ₁₆			13 ³ / ₈ x 41 ⁵ / ₁₆ x 9 ³ / ₄	
FVXS Floor/Low Wall Mount		FVXS09WVJU9	FVXS12WVJU9	FVXS15WVJU9	FVXS18WVJU9	
		23 ⁵ / ₈ x 27 ⁹ / ₁₆ x 8 ¹ / ₄				
FDMQ Ducted Concealed	CDMQ07WVJU9	FDMQ09WVJU9	FDMQ12WVJU9	FDMQ15WVJU9	FDMQ18WVJU9	FDMQ24WVJU9
		9 ⁵ / ₈ x 27 ⁹ / ₁₆ x 31 ¹ / ₂			9 ⁵ / ₈ x 39 ³ / ₈ x 31 ¹ / ₂	



Use of the AHRI Certified® mark indicates a manufacturer's participation in the certification program. For verification of certification for individual products, go to www.ahridirectory.org



About Daikin:

Daikin Industries, Ltd. (DIL) is a global Fortune 1000 company and is recognized as one of the largest HVAC (Heating, Ventilation, Air Conditioning) manufacturers in the world. Founded in 1924, Daikin is approaching 100 years of HVAC worldwide leadership. DIL is primarily engaged in developing indoor comfort systems and refrigeration products for residential, commercial, and industrial applications. Its consistent success is derived, in part, from a focus on innovative, energy-efficient, and premium quality indoor climate and comfort management solutions.

Daikin *SplitXpress* Selection Tool

The new interactive *SplitXpress* mobile app and website provide a complete product selection tool to streamline system selection for single and multi-zone projects. Users can create equipment selections and add accessories / pricing details to quickly share quotes with customers. Available for free on the *App Store* (iOS) and *Google Play* (Android), and at <https://splitxpress.daikinac.com>.



WARNINGS:

- » Always use a licensed installer or contractor to install this product. Do not try to install the product yourself. Improper installation can result in water or refrigerant leakage, electrical shock, fire or explosion.
- » Use only those parts and accessories supplied or specified by Daikin. Ask a licensed contractor to install those parts and accessories. Use of unauthorized parts and accessories or improper installation of parts and accessories can result in water or refrigerant leakage, electrical shock, fire or explosion.
- » Read the User's Manual carefully before using this product. The User's Manual provides important safety instructions and warnings. Be sure to follow these instructions and warnings.
- » For any inquiries, contact your local Daikin sales office.



App Store is a registered trademark of Apple Inc.

Google Play and the *Google Play* logo are trademarks of Google LLC.

The *Bluetooth*® word mark and logos are registered trademarks owned by Bluetooth SIG, Inc., and any use of such marks are under license.

BACnet™ is a trademark of ASHRAE.

Modbus® is a registered trademark of Schneider Electric USA, Inc.

ADDITIONAL INFORMATION

Before purchasing this appliance, read important information about its estimated annual energy consumption, yearly operating cost, or energy efficiency rating that is available from your retailer.



Our continuing commitment to quality products may mean a change in specifications without notice.

© 2023 **DAIKIN COMFORT TECHNOLOGIES NORTH AMERICA, INC.** · Houston, Texas · USA · www.daikincomfort.com or www.daikinac.com

CB-AURMZ_08-23