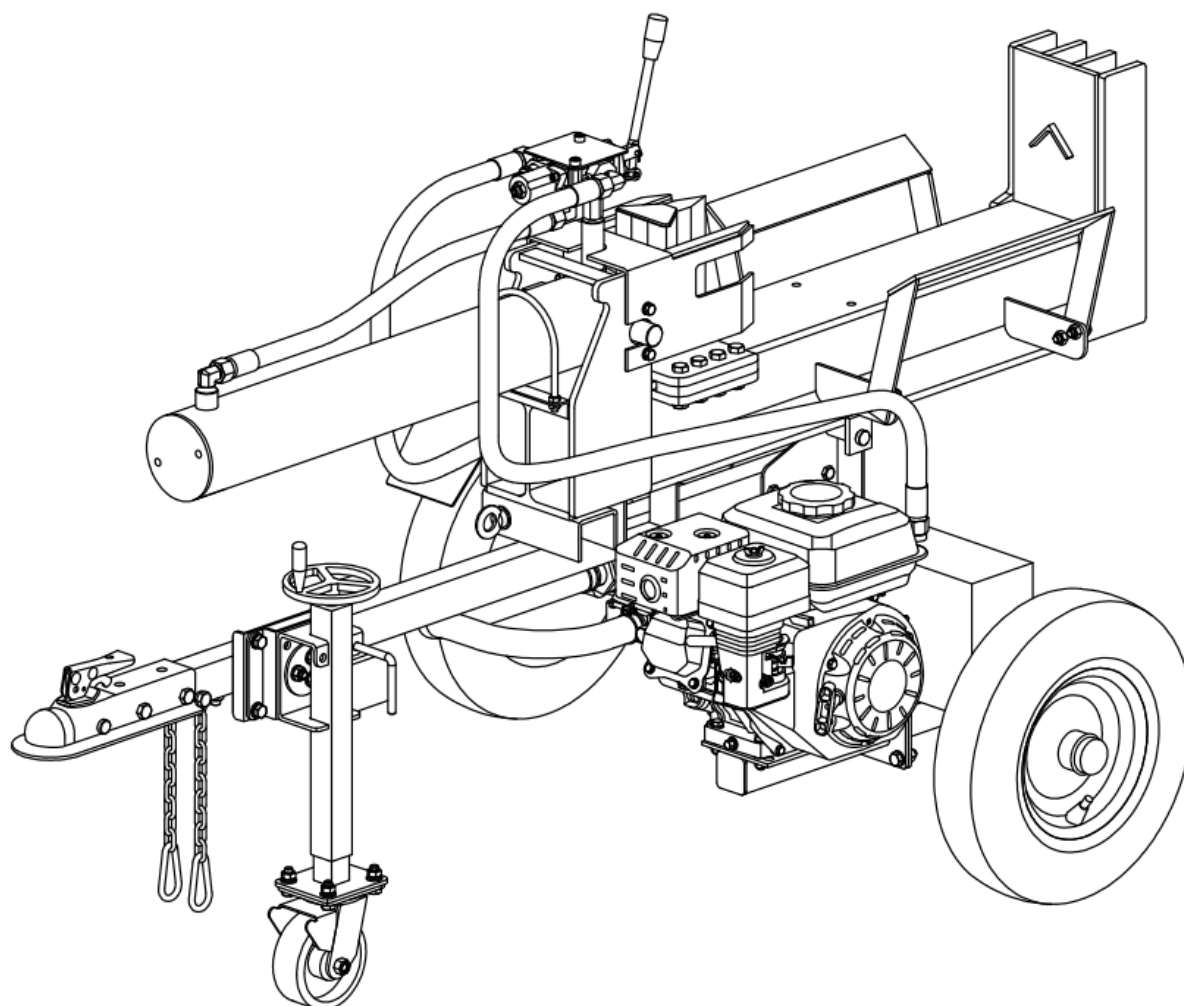




30 TON LOGSPLITTER

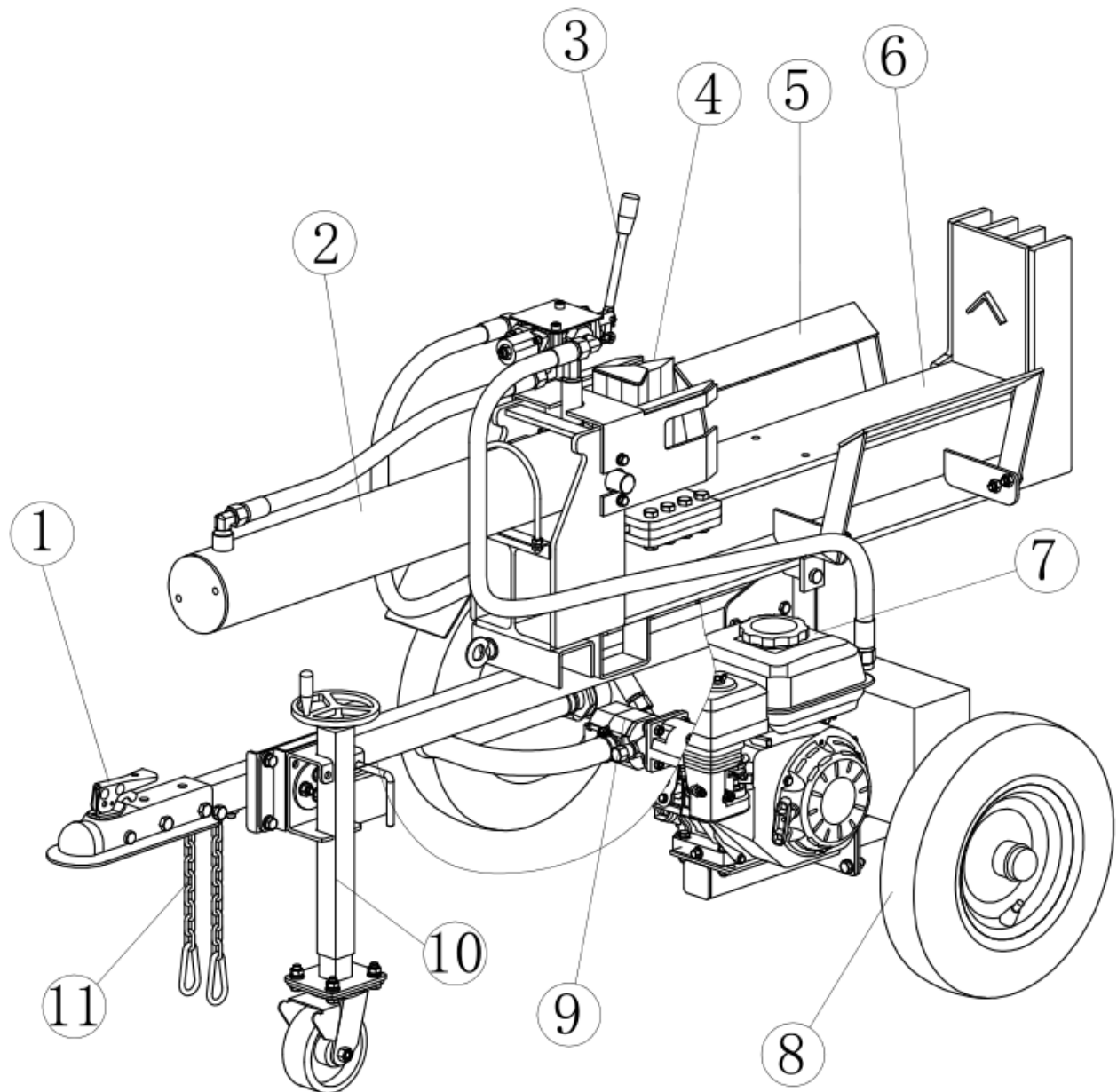
MODELS

PK0311 / PK0312



Owner's Manual and Operating Instructions

MACHINE COMPONENT DEFINITIONS



- 1.) **50mm/2' Coupler.** Attaches the log splitter to your vehicle. Fits only 50mm/2' hitch balls.
- 2.) **Hydraulic Cylinder.** It is rated to 3500 psi.
- 3.) **Control Valve Handle.** Use the control valve handle to move the wedge slide forward and backward.
- 4.) **Wedge.** The wedge features a taper that makes splitting easier.
- 5.) **Log Cradle.** Keeps the log on the beam without operator assistance.
- 6.) **Beam.** The beam is made of 6" wide flange beam (also called I-Beam).
- 7.) **Engine.** The air cooled engine powers the hydraulic pump.
- 8.) **Tires.** Maximum rated speed is 30 mile per hour.
- 9.) **Gear Pump.** The gear pump makes the hydraulic oil flow through the system.
- 10.) **Jockey wheel.** The leg supports the log splitter while operating. The leg should be raised while

towing(see Operation Instructions).

11.) **Safety Chains.** A safety feature to prevent loss of log splitter while towing.

⚠ OPERATION INSTRUCTIONS

Proper Operation of the Log Splitter

- 1.) Load a log onto the beam and against the endplate.
- 2.) Serious accidents can happen when other people are allowed inside the work zone. Keep everyone else out of the work zone while operating control valve.
- 3.) Make sure hands are clear of crush hazard zones.
- 4.) Push control valve handle FORWARD by two hands to split log.
- 5.) Push control valve handle BACKWARD by two hands to return wedge to its original position.
- 6.) Clear the split wood from the work zone.

OPERATING INSTRUCTIONS

GENERAL

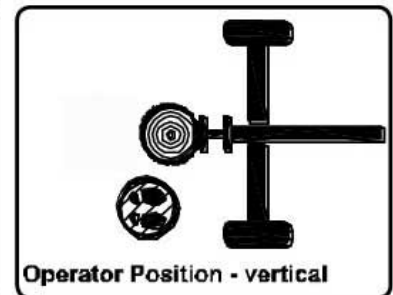
- Stay in the OPERATOR POSITION while actuating controls.
- Never actuate controls until the helper is 10ft away from log splitter, including any helpers assisting to load logs.
- Wear eye protection, hearing protection, snug fitting gloves, and safety shoes or heavy boots. No loose or dangling apparel.

SETTING UP

- Place log splitter on dry, level ground.
- Secure splitter for unintended movement.
- Place splitter in horizontal or vertical position.
- Start engine

SPLITTING LOG

- Position log on beam, against endplate.
- Move split control to extend wedge and split log.
- Release split control to stop wedge.
- Move split control to return wedge.
- Remove split wood from work area.



⚠ WARNING

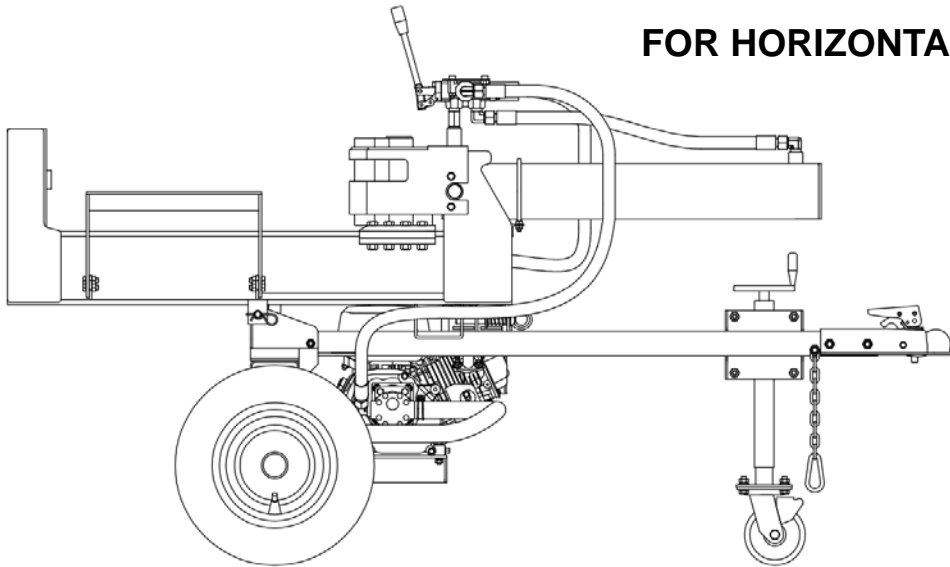
Moving parts can crush and cut. Pieces can fly out while splitting. Follow safety rules for operating the log splitter or serious injury could result.

- ♦ READ the Owner's Manual completely before operating.
- ♦ Only one person should operate the log splitter. If an assistant is helping to load logs, the operator should not actuate controls until the assistant is at least 10 ft away.
- ♦ Stay in the designated OPERATOR POSITION while actuating the controls.
- ♦ Split wood in direction of the grain only.
- ♦ Hold bark side of logs when loading.
- ♦ Keep hands away from wedge, endplate/ram, and partly split logs.
- ♦ Never leave log splitter unattended during operation.
- ♦ Stay off slopes and slippery surfaces.

See additional safety rules in the Owner's Manual.

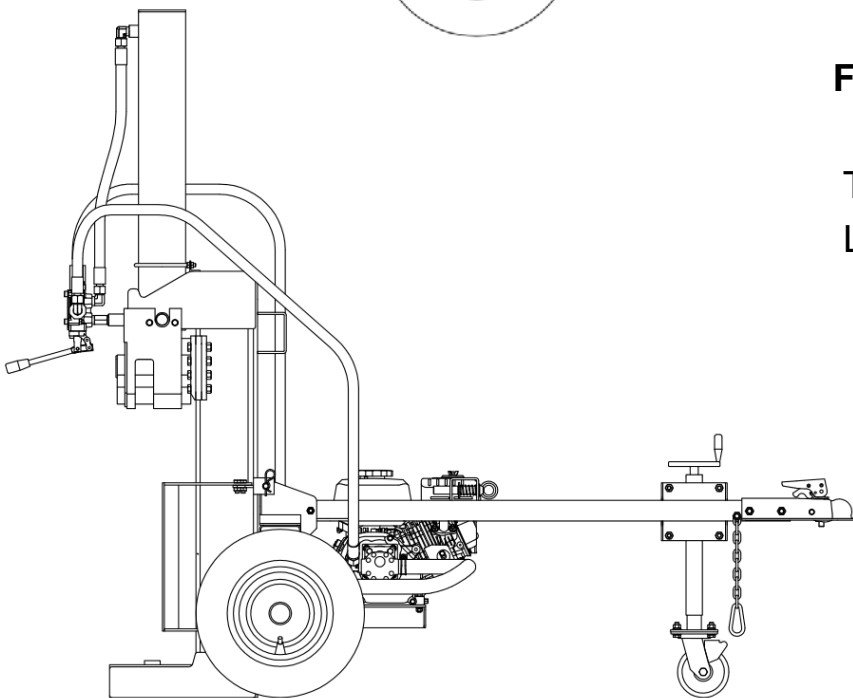
⚠ OPERATION INSTRUCTIONS

FOR HORIZONTAL USING

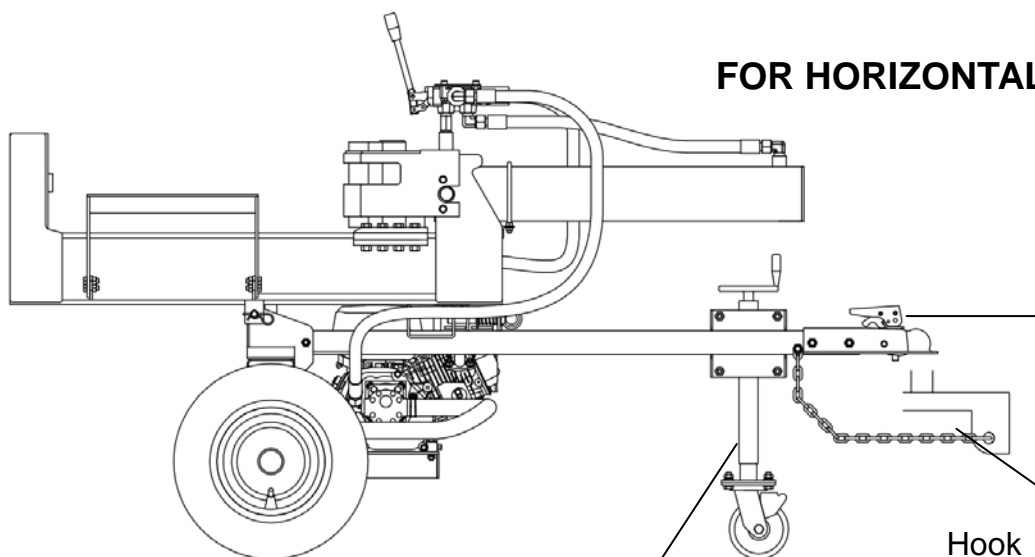


FOR VERTICAL USING

Take out lock pin
Lift beam at the end



FOR HORIZONTAL TOWING



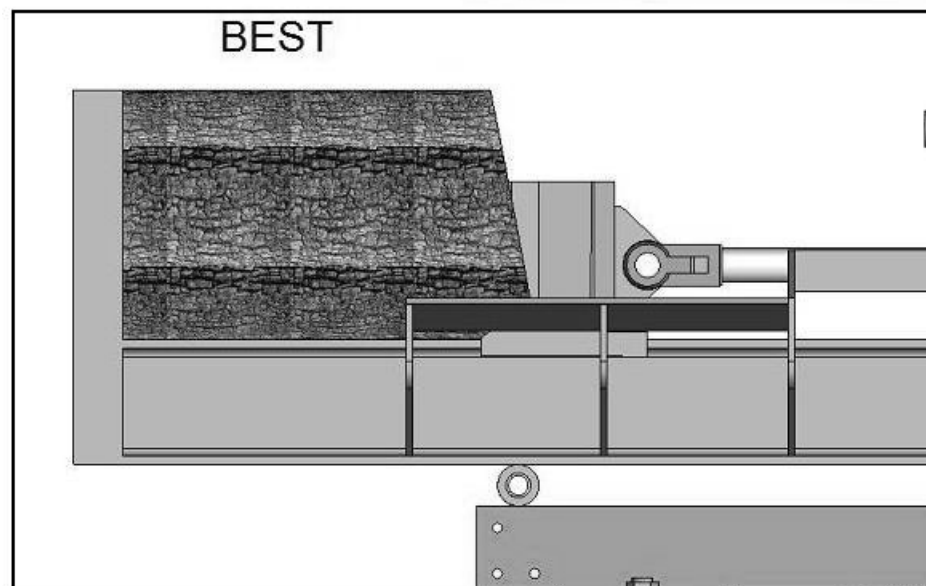
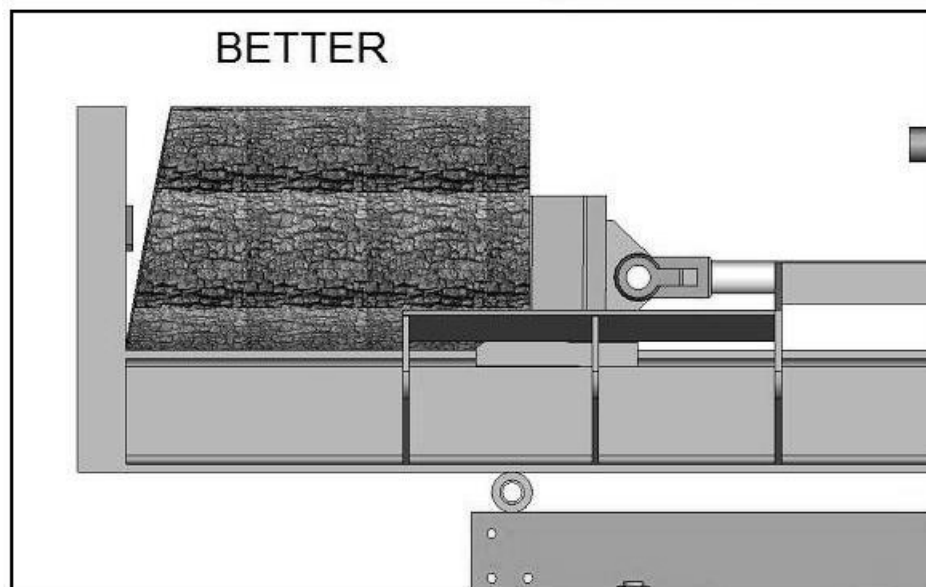
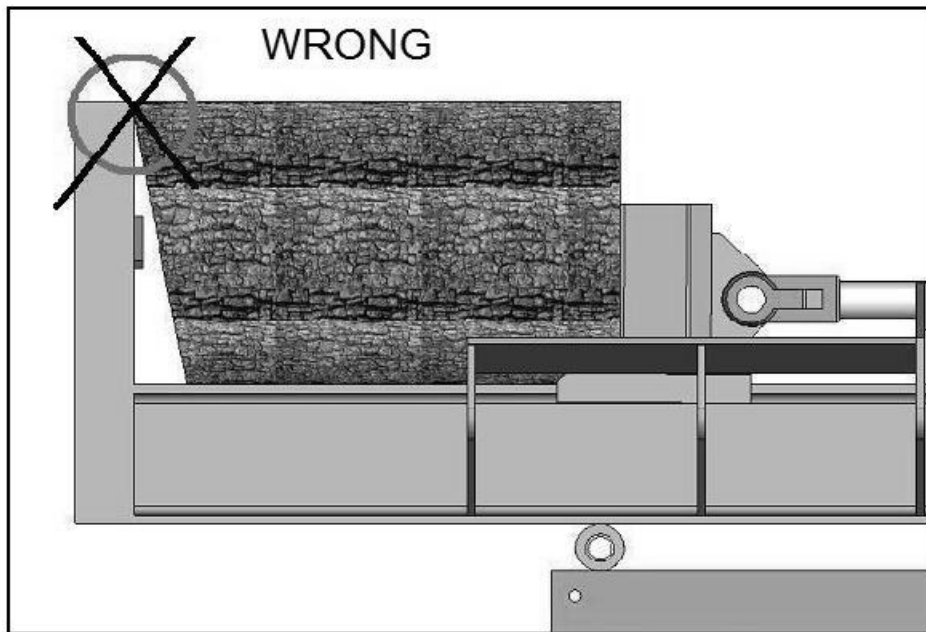
Press handle down
and lock tightly.

Hook safety chain
to tow vehicle.

Fold the jockey wheel

⚠ OPERATION INSTRUCTIONS

HOW TO SPLIT THE LOG WITH SLANT SURFACE



⚠ MAINTENANCE AND STORAGE



Before performing maintenance, the log splitter must be placed in maintenance mode.

1.) Turn off engine.

2.) Move the control valve handle forward and backward to relieve hydraulic pressure.



After performing maintenance, make sure all guards, shields, and safety features are put back in place. Failure to follow this warning can result in serious injury.

Refer to the engine owner's manual for engine maintenance.

What	When	How
Hoses	Each Use	Inspect for exposed wire mesh and leaks. Replace all worn or damaged hoses before starting engine
Hydraulic Fittings	Each Use	Inspect for cracks and leaks. Replace all damaged fittings before starting engine
Nuts and Bolts	Each Use	Check for loose bolts
Beam	Each Use	Apply grease to beam surface
Moving Parts	Each Use	Clear debris

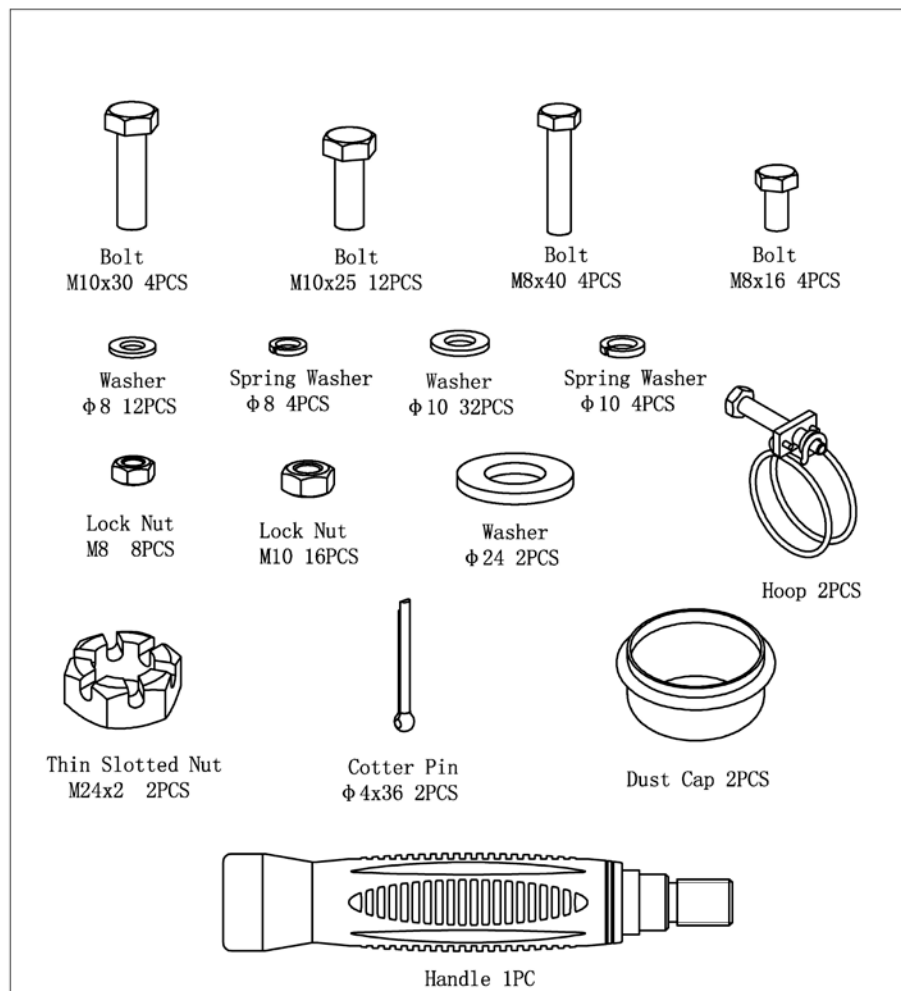
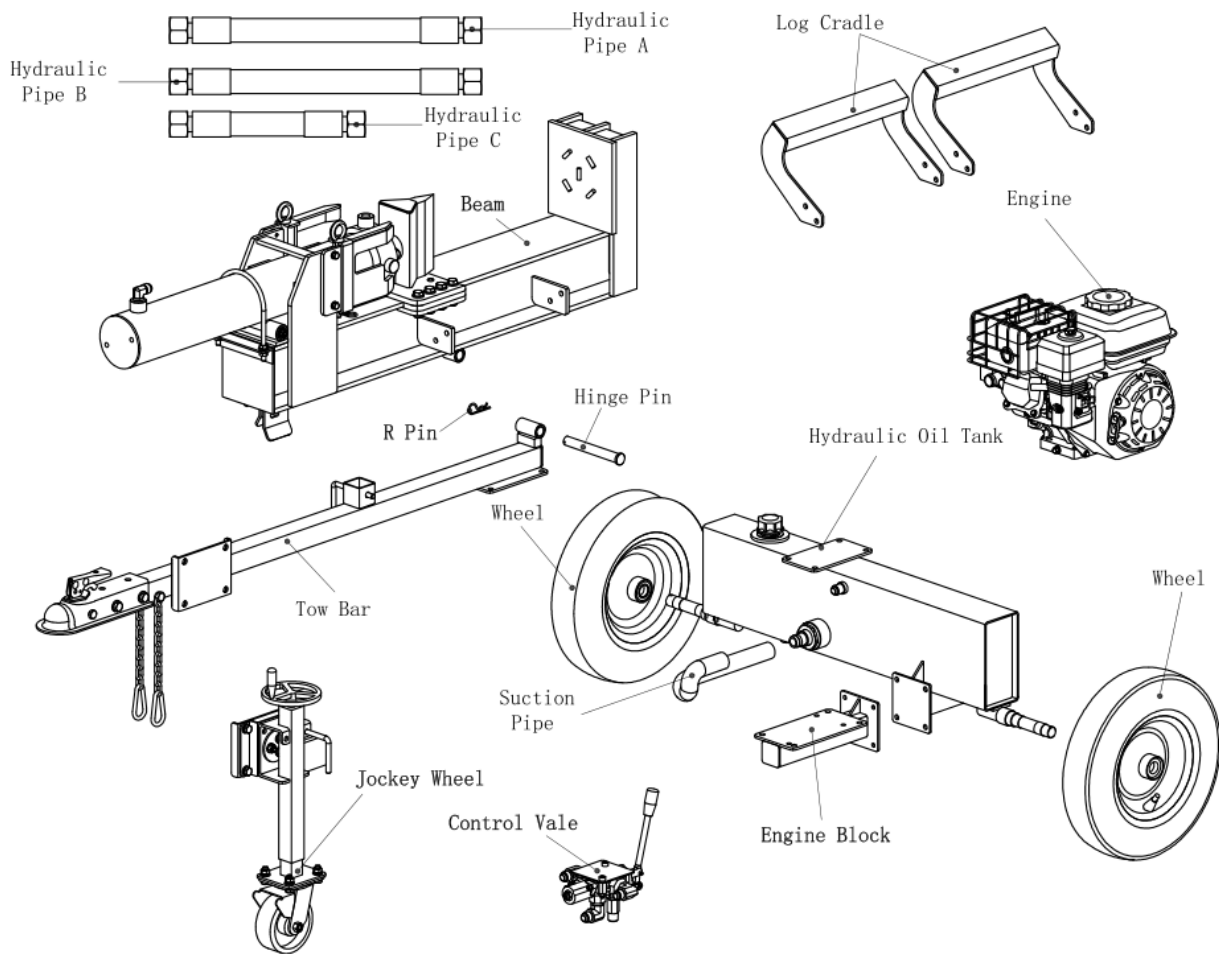
SPECIFICATIONS

Maximum Pressure.....	3500 psi
Maximum Flow	16GMP
Hydraulic Fluid Capacity	17L / 30
Hydraulic Fluid Type	10wt AW32, ASLE H-150, or ISO32
Coupler Size	2" Ball
Maximum Towing Speed.....	45MPH
Maximum Log Length	25.6 "
Hydraulic Cylinder Bore	4.5"
Hydraulic Cylinder Stroke	23.6 "
Maximum Log Diameter	19.7"

TROUBLESHOOTING

Problem	
Cylinder rod will not move	SOLUTION: A,D,E,H,J
Slow cylinder rod speed when extending or retracting	SOLUTION: A,B,C,H,I,K,L
Wood will not split or splits extremely slowly	SOLUTION: A,B,C,F,I,K
Engine bogs down during splitting	SOLUTION: G,L
Engine stalls under low load condition	SOLUTION: D,E,L,M
Cause	Solution
A -Insufficient oil to pump	Check oil level in reservoir
B -Air in oil	Check oil level in reservoir
C -Excessive pump inlet vacuum	Check pump inlet hose for blockage or kinks
D -Blocked hydraulic lines	Flush and clean the splitter hydraulic system
E -Blocked control valve	Flush and clean the splitter hydraulic system
F -Low control valve setting	Adjust control valve with a pressure gauge
G -High control valve setting	Adjust control valve with a pressure gauge
H -Damaged control valve	Return control valve for authorized repair
I -Internal control valve leak	Return control valve for authorized repair
J -Internal cylinder leak	Return cylinder for authorized repair
K -Internally damaged cylinder	Return cylinder for authorized repair
L -Engine Control out of adjustment	Adjust idle control nuts
M -Engine is loaded during idle down mode	Use shorter log length to allow engine to speed up before contact.

Components in the package



ASSEMBLY

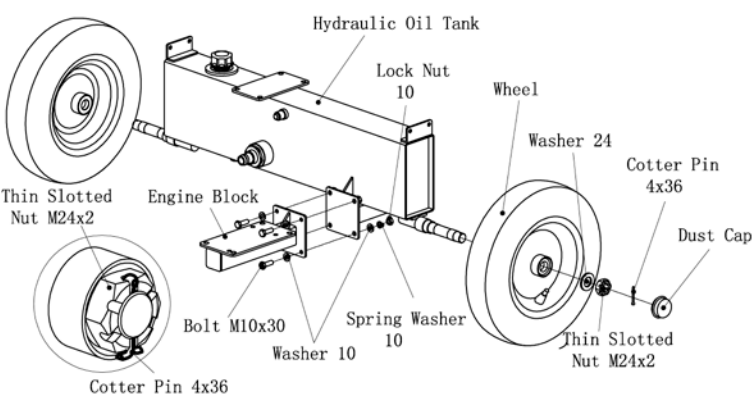
Open Shipping Crate

1. Set the shipping Crate on a solid, flat surface.
2. Carefully cut the shipping bands and remove lid of shipping crate.
3. Using two people to lift, carefully remove the engine, oil tank, wheels, tow bar, support legs, and hardware. (For parts reference see the last page in manual)
4. Locate all hardware before beginning assembly.

Step 1: Wheel Assembly

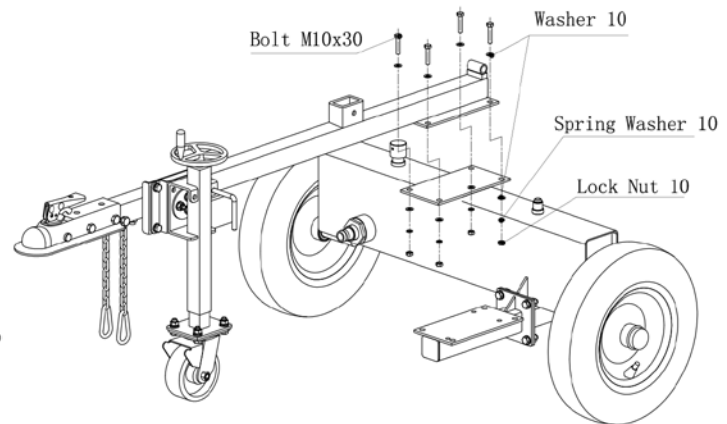
Fix the wheel to the oil tank axle by a slotted nut M24x2, cotter pin Ø4x36 and attach the dust cap.

Attach engine block to oil tank with bolt M10x30, flat washer 10 and spring washer 10, and fix by screw M10



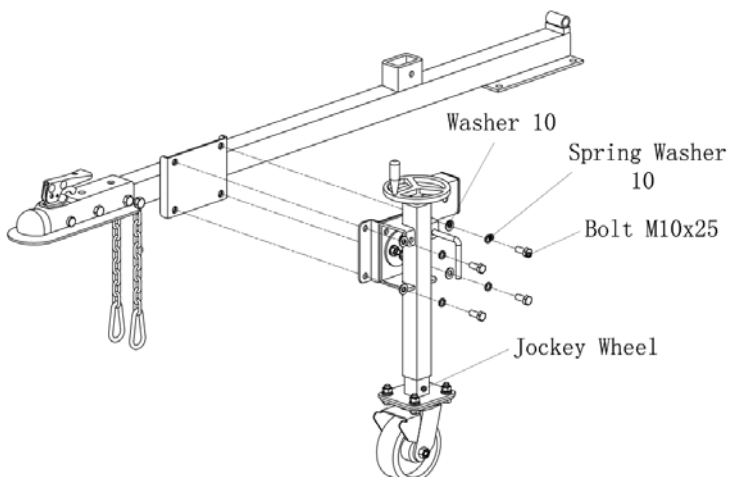
Step 3: Attach Tow bar to Oil Tank

Attach the tow bar to the oil tank with Bolt M10x25, washer 10 Lock Nut M10



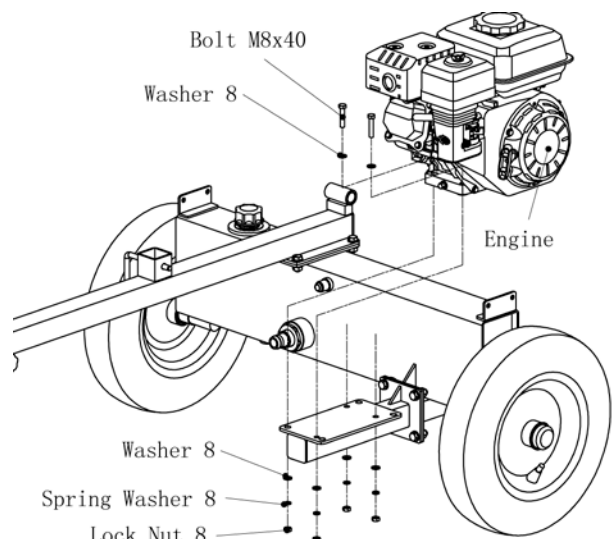
Step 2: Attach jockey wheel to tow bar

Attach the jockey wheel to tow bar fix with Bolt M10x25, spring washer 10 and washer 10



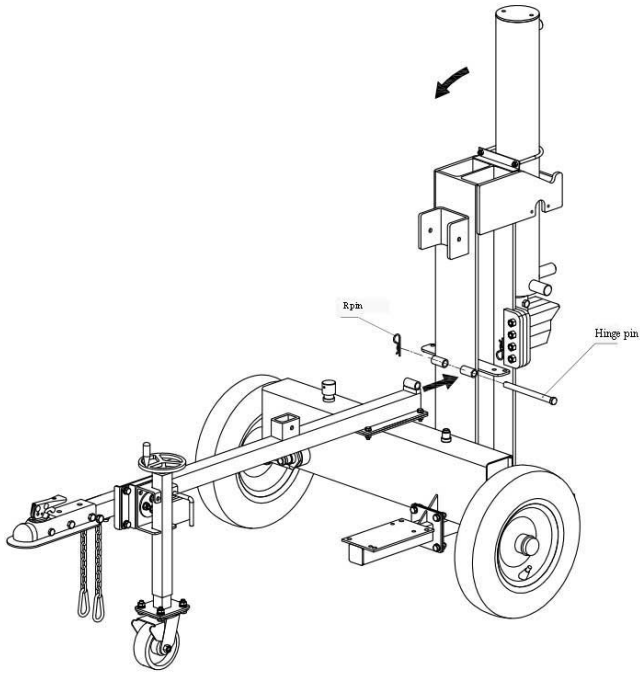
Step 4: Attach engine

Attach the engine to engine block with bolt M8x40, spring washer 8, washer 8, lock nut M8



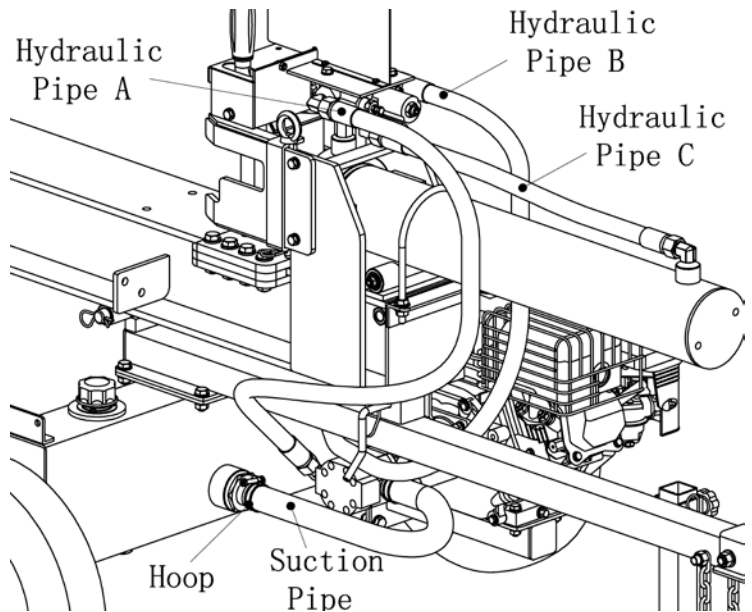
Step 5: Attach Tow Bar to Beam

Attach the tow bar to beam with hinge pin and R pin



Step 7: Assemble the pipes

Assemble all the pipes according to the picture

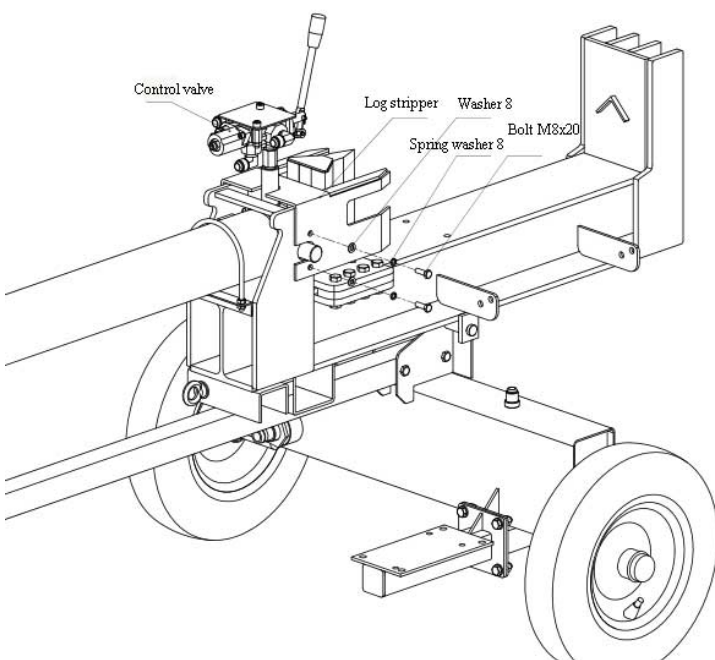


Step 6: Attach control valve to cylinder

Take out the log stripper and move the cylinder to stripper end

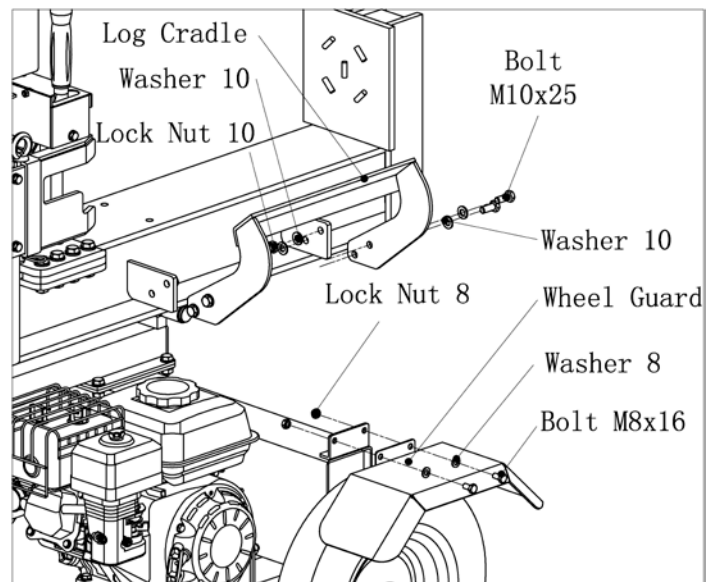
Assemble the control valve on cylinder

Assemble back the log stripper

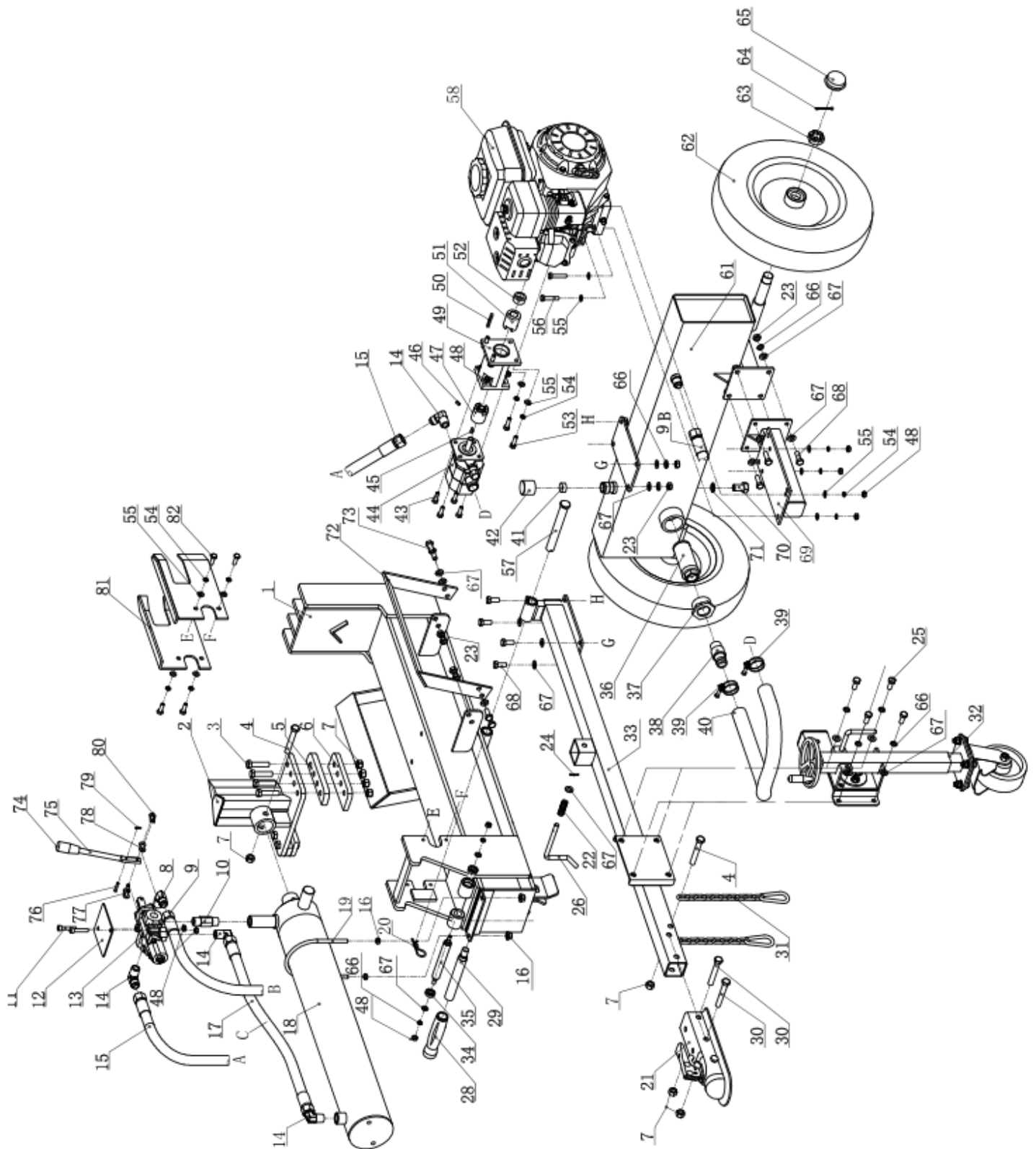


Step 8: Attach Log Cradle

Attach log cradle(#88) to beam with Bolt M10x25, washer10 and lock nut m10



EXPLODED VIEW AND PARTS LIST



NO.	DESCRIPTION	QTY
1	Beam	1
2	Wedge	1
3	Bolt M12x50	8
4	Bolt M12x50	14
5	Wedge Spacer	1
6	Wedge Plate	2
7	Lock nut M12	2
8	1/2" -22x1.5 Connector	12
9	Hydraulic oil pipe B	1
10	Pipe Joint	1
11	Bolt M8X40	1
12	Valve lable plate	1
13	Control valve	4
14	1/2-1/2 pipe joint	14
15	Hydraulic oil pipe A	1
16	Nut M10	1
17	Hydraulic oil pipe C	1
18	Cylinder	1
19	Hoop	4
20	R PIN ϕ 3x65	18
21	Hitch coupler	38
22	Srping	3
23	Nut M10	2
24	Pin 3x22	1
25	Bolt M10X25	1
26	Lock pin	4
27	Spring	1
28	Grip	2
29	Handle	2
30	Bolt M12x80	1
31	Chain	1
32	Jockey wheel	1
33	Tow bar	1
34	Bearing 609-2Z	1
35	Pin II	1
36	Net Type Oil Filter 40x180-J	1
37	Oil Filter Core ZG1 1/2	33
38	Inlet Pipe Fitting G1	1
39	Steel hoop	12
40	Suction Pipe	1

NO.	DESCRIPTION	QTY
41	Oil Filter	1
42	Hydraulic Oil Tank Cover	1
43	Bolt M8X25	2
44	Hydraulic pump	1
45	Woodruff key	8
46	Bolt M6x10	1
47	Gear pump coupling	1
48	Nut M8	1
49	Pump housing	1
50	Ordinary Flat Key	1
51	Engine coupling	1
52	Engine bushing	1
53	Bolt M8x30	1
54	Spring washer ϕ 8	1
55	Washer ϕ 8	4
56	Bolt M8X40	1
57	Hinge pin	4
58	Engine	1
61	Hydraulic oil tank	4
62	Wheel 16"	2
63	Thin Slotted Nut M24x2	1
64	Cotter pin ϕ 4x36	2
65	Dust cap	2
66	Spring washer ϕ 10	2
67	Washer ϕ 10	2
68	Bolt M10x30	2
69	Engine block	16
70	Bolt M16x1.5	4
71	Washer ϕ 16	4
72	Log cradle	1
73	Bolt M10x25	1
74	Valve handle grip	1
75	Valve handle	2
76	Log stripper (right)	1
77	Bolt M8x25	4
78	Log stripper (left)	1
79	Chain	2
80	Lock	4
81	Log stripper	1
82	Bolt M8x20	2

QVTOOLS, LLC.

Warranty Statement

QVTOOLS, LLC warrants all gas power equipment 1 year for manufacture defects, Kohler engine 3 years from date of purchase. Proof of purchase date required for warranty repairs. Keep your receipt. QVTOOLS, LLC will provide parts and labor of Powerking products only at our approved service centers, Customer is responsible for delivery and pickup of the product to and from the service center. Please call us at 800-344-3371 for warranty claims and to be assigned a service center. Gas Equipment is non-returnable and will be serviced by authorized service centers only. Only authorized service centers have parts and can perform repairs as to not void your warranty. This warranty does not cover cosmetic defects such as paint, decals or wear items. This warranty does not cover failures or problems due to acts of God, or events or forces beyond the control of the QVTOOLS, LLC. Warranty does not apply to defects due directly or indirectly to misuse, abuse, negligence, or accidents, repairs or alterations, or a lack of maintenance. QVTOOLS shall in no event be liable for death, injuries to persons or property, or for incidental, special, or consequential damages arising from the use of our products.

All NON-GAS products are covered with 1 year warranty from manufactures defects and will be repaired or replaced by QVTOOLS, LLC. with proof of purchase date. Please call 800-344-3371 PST to obtain an RGA number from our customer service department to return your product.