
Kaishan Rotary Screw Air Compressor

KRSD 150/200HP Parts Manual

October 2022

(115PSI/125PSI/150PSI/460V/60HZ/FS/VSD/ASME/UL)

TABLE OF CONTENTS

Service Parts	3
Serial Number	3
Fluid Specification	4
Spare Parts	5
Airend and Inlet valve.....	6
Base Mounting.....	12
Reservoir	16
Driving System and Electrical Motor	18
Air Cooler	20
Fluid Piping.....	24
Air Piping.....	26
Cabinet.....	30
Electrical Enclosure	34
Decals	42
Standard Terms and Conditions.....	45
Appendix.....	48
Contact Information	49

Service Parts


The following information must be provided for ordering service parts:

1. The serial number of unit must be provided. It will be verified to ensure correct replacement parts are ordered.
2. Service parts must be ordered from closest authorized distributor.
3. Exact part number, quantity and delivery method must be provided.

All service parts must be ordered through nearest authorized distributor. Insist on genuine manufacturer parts only. Failure to do so may void product warranty.

Serial Number

The unit serial number can be found on serial number tag, which is located on the cabinet corner post of the unit. The serial number tag is shown as follows.

		SCREW AIR COMPRESSOR	
MODEL	<input type="text"/>		
SERIAL NUMBER	<input type="text"/>		
RATED DISCHARGE PRESSURE	<input type="text"/>	PSI	MOTOR POWER <input type="text"/> HP
RATED SPEED	<input type="text"/>	RPM	NET WEIGHT <input type="text"/> KG
OVERAL DIMENSIONS (L x W x H)	MM <input type="text"/>		
VOLTAGE	<input type="text"/>	DATE OF MFG	<input type="text"/>
KAISHAN COMPRESSOR, Daphne, AL USA			

Fluid Specification

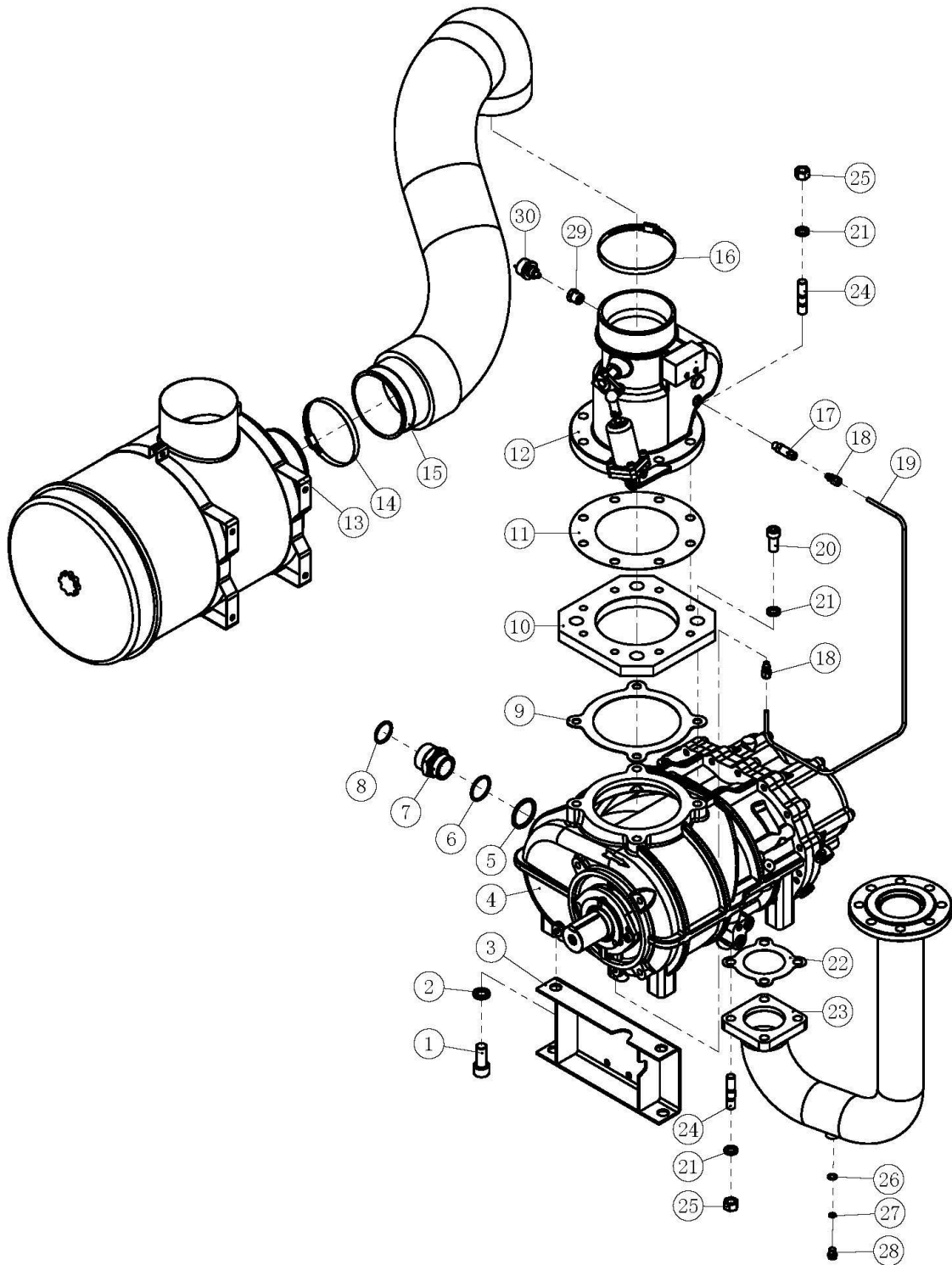
All KRSD Compressors must use KCA recommended fluid for maintenance.

Spare Parts

Recommended spare parts are shown as follows:

ITEM	No.	QTY	PART NUMBER	DESCRIPTION		
1		1	56 020 300440	Air filter element		
2		2	07709 13530 20	Oil filter		
3		1	55275 325460	Fluid/air separator element		

Airend and Inlet valve



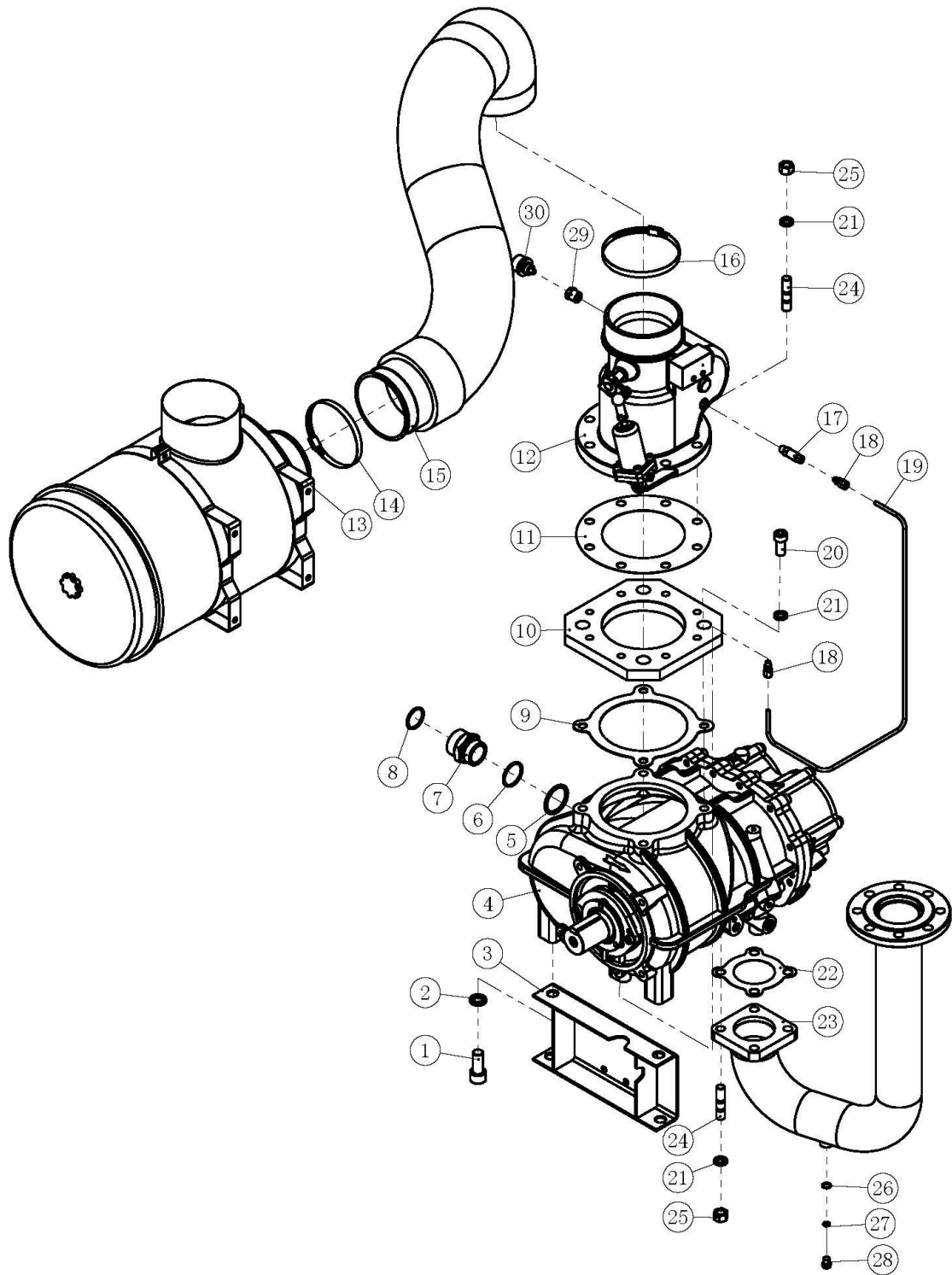
Airend and Inlet valve

(150-115/150-VSD/200-150)

NO.	PN	DESCRIPTION	QTY	REMARK
1	01344 20045 00	Bolt	2	M20×45
2	01365 20000 00	Washer	2	20
3	22758 01001 00	Airend support	1	
4	4080101	Airend	1	150-115/150-VSD
	4080201			200-150
5	02201 00040 00	Screw washer	1	
6	02901 04500 30	O-ring	1	45X3.55
7	98055 06003 09	Joint	1	
8	02901 03870 30	O-ring	1	38.7X3.55
9	19458 01002 01	Seal	1	
10	20458 01002 01	Inlet flange	1	
11	02216 16220 86	Seal	1	
12	01608 12001 00	Inlet valve	1	
12A*	04002 00120 00	Air cylinder, Inlet valve	1	
12B*	01605 01500 02	Blowdown valve	1	
13	07702 02030 44	Air filter	1	
14	04401 13015 00	Hoop	1	
15	02907 15131 04	Flexible pipe	1	
16	04401 14516 50	Hoop	1	
17	01610 03000 00	Check valve	1	
18	01512 06100 00	Joint	2	
19	21558 01100 00	Oil return pipe	1	
20	01344 16035 00	Bolt	4	M16×35
21	01365 16000 00	Washer	13	16
22	02217 13004 16	Gasket	1	
23	22758 03002 00	Airend discharge pipe	1	
24	01391 16050 00	Stud	9	M16×50
25	01322 16000 00	Nut	9	M16
26	02201 01215 00	Screw washer	1	
27	02901 00950 10	O-ring	1	9.5X1.8
28	18404 03100 00	Screw plug	1	M12X1.5
29	95433 01100 00	Joint	1	R0.5-M10X1
30	02809 00102 00	Air filter indicator	1	

*Items not shown on the drawing.

Airend and Inlet valve



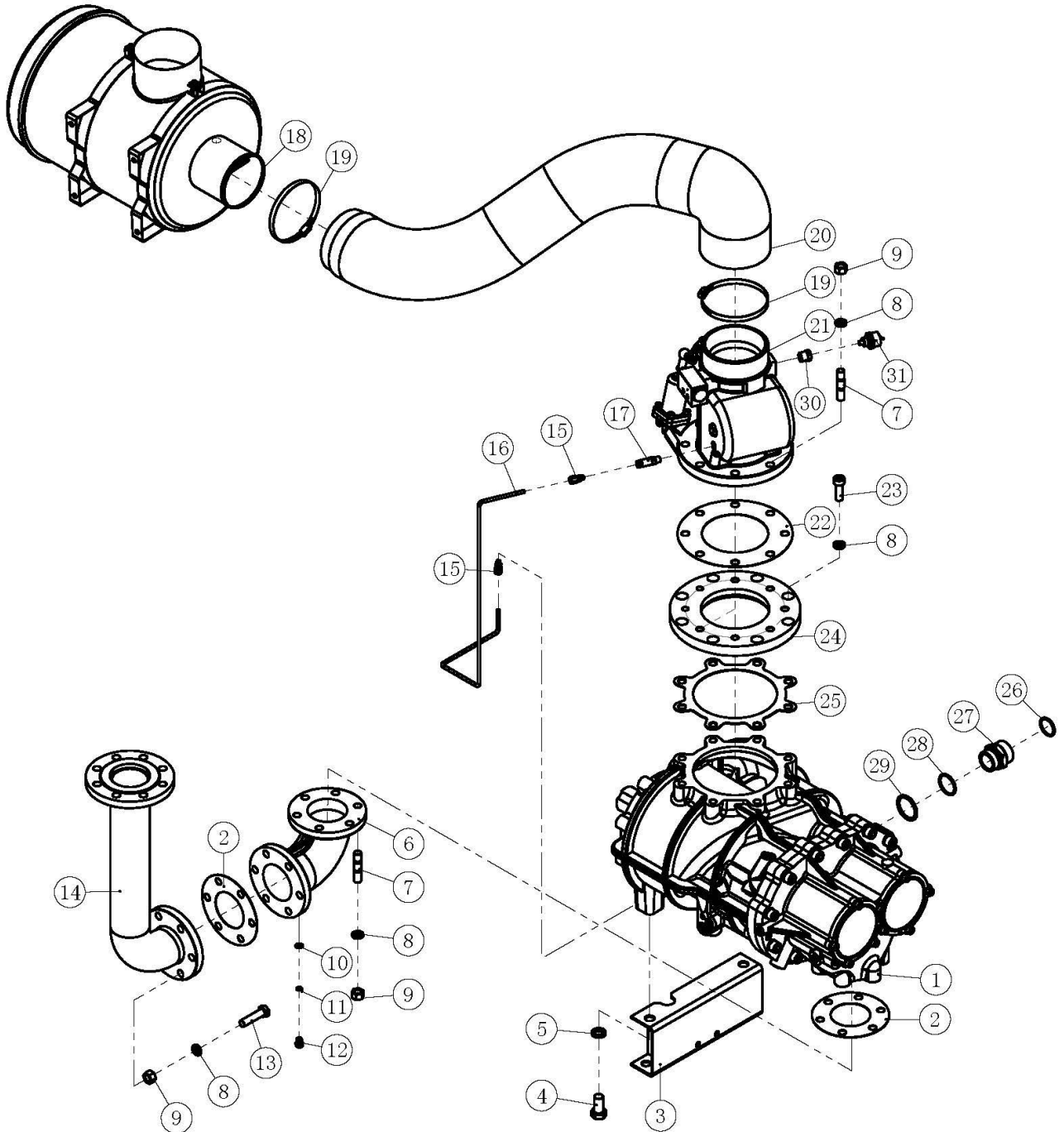
Airend and Inlet valve

(150-150)

NO.	PN	DESCRIPTION	QTY	REMARK
1	01344 20045 00	Bolt	2	M20×45
2	01365 20000 00	Washer	2	20
3	22758 01001 00	Airend support	1	
4	4070201	Airend	1	150-150
5	02201 00040 00	Screw washer	1	
6	02901 04500 30	O-ring	1	45X3.55
7	98055 06003 09	Joint	1	
8	02901 03870 30	O-ring	1	38.7X3.55
9	19458 01002 01	Seal	1	
10	20458 01002 01	Inlet flange	1	
11	02216 16220 86	Seal	1	
12	01608 12001 00	Inlet valve	1	
12A*	04002 00120 00	Air cylinder, Inlet valve	1	
12B*	01605 01500 02	Blowdown valve	1	
13	07702 02030 44	Air filter	1	
14	04401 13015 00	Hoop	1	
15	02907 15131 04	Flexible pipe	1	
16	04401 14516 50	Hoop	1	
17	01610 03000 00	Check valve	1	
18	01512 06100 00	Joint	2	
19	21758 01100 00	Oil return pipe	1	
20	01344 16035 00	Bolt	4	M16×35
21	01365 16000 00	Washer	13	16
22	02217 13004 16	Gasket	1	
23	21758 03002 00	Airend discharge pipe	1	
24	01391 16050 00	Stud	9	M16×50
25	01322 16000 00	Nut	9	M16
26	02201 01215 00	Screw washer	1	
27	02901 00950 10	O-ring	1	9.5X1.8
28	18404 03100 00	Screw plug	1	M12X1.5
29	95433 01100 00	Joint	1	R0.5-M10X1
30	02809 00102 00	Air filter indicator	1	

*Items not shown on the drawing.

Airend and Inlet valve



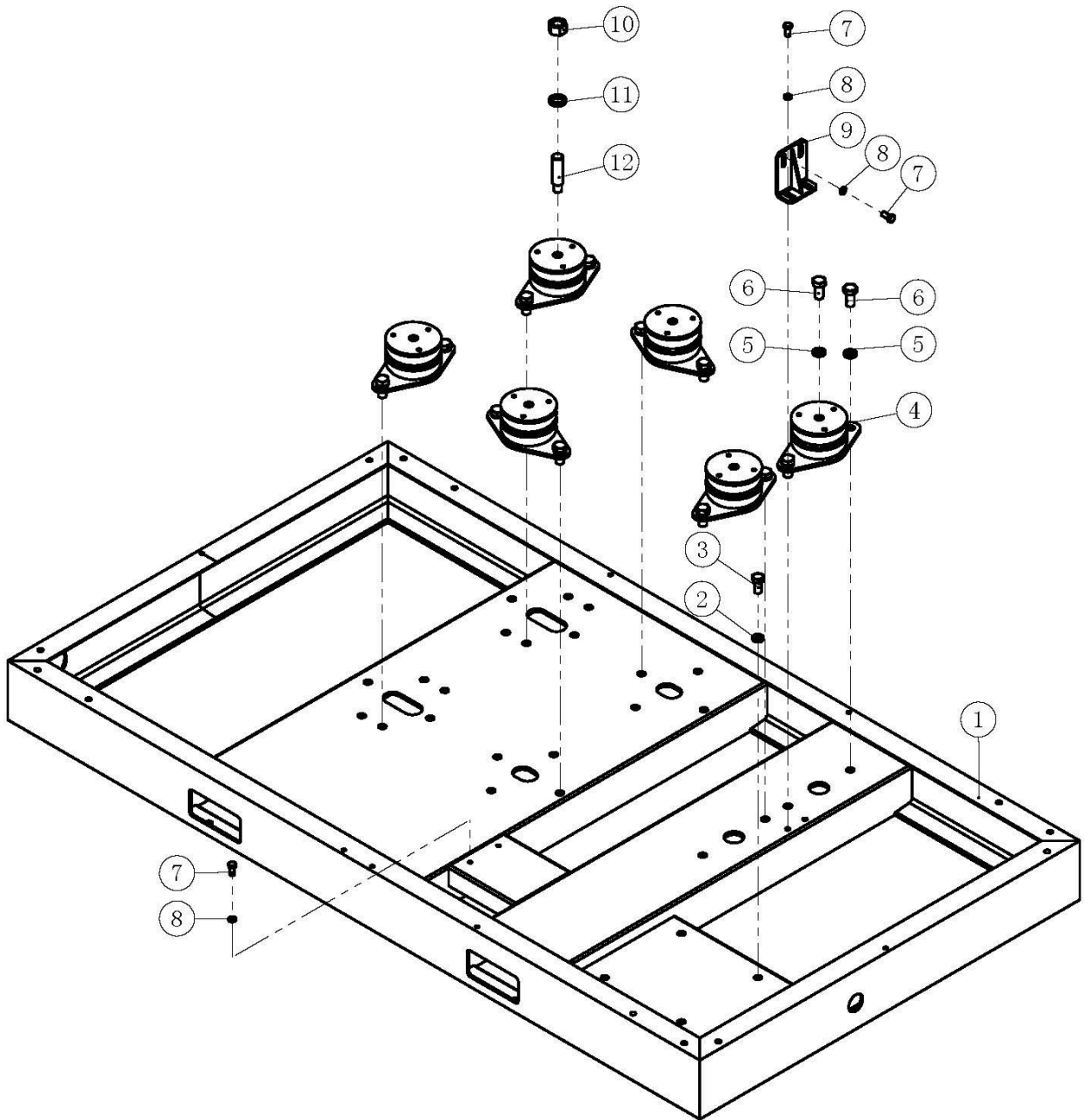
Airend and Inlet valve

(200-115/200-VSD)

NO.	PN	DESCRIPTION	QTY	REMARK
1	4090101	Airend	1	200-115/200-VSD
2	02214 09140 62	Gasket	2	
3	21424 01001 00	Airend support	1	
4	01307 20040 00	Bolt	2	M20×40
5	01365 20000 00	Washer	2	20
6	22424 03001 00	Airend discharge pipe	1	
7	01392 16055 00	Stud	14	AM16×55
8	01365 16000 00	Washer	28	16
9	01322 16000 00	Nut	20	M16
10	02201 01215 00	Screw washer	1	
11	02901 00950 10	O-ring	1	9.5X1.8
12	18404 03100 00	Screw plug	1	M12X1.5
13	01306 16065 00	Bolt	6	M16×65
14	22458 03002 00	Connecting pipe	1	
15	01512 06100 00	Joint	2	
16	21458 01100 00	Oil return pipe	1	
17	01610 03000 00	Check valve	1	
18	07702 02030 44	Air filter	1	
19	04401 14516 50	Hoop	2	
20	02907 15131 04	Flexible pipe	1	
21	01608 12001 00	Inlet valve	1	
21A*	04002 00120 00	Air cylinder, Inlet valve	1	
21B*	01605 01500 02	Blowdown valve	1	
22	22315 01001 00	Seal	1	
23	01344 16045 00	Bolt	8	M16×45
24	22424 01005 00	Inlet flange	1	
25	22424 01003 00	Seal	1	
26	02901 03870 30	O-ring	1	38.7X3.55
27	98055 06003 09	Joint	1	
28	02901 04500 30	O-ring	1	45X3.55
29	02201 00040 00	Screw washer	1	
30	95433 01100 00	Joint	1	R0.5-M10X1
31	02809 00102 00	Air filter indicator	1	

*Items not shown on drawing.

Base Mounting

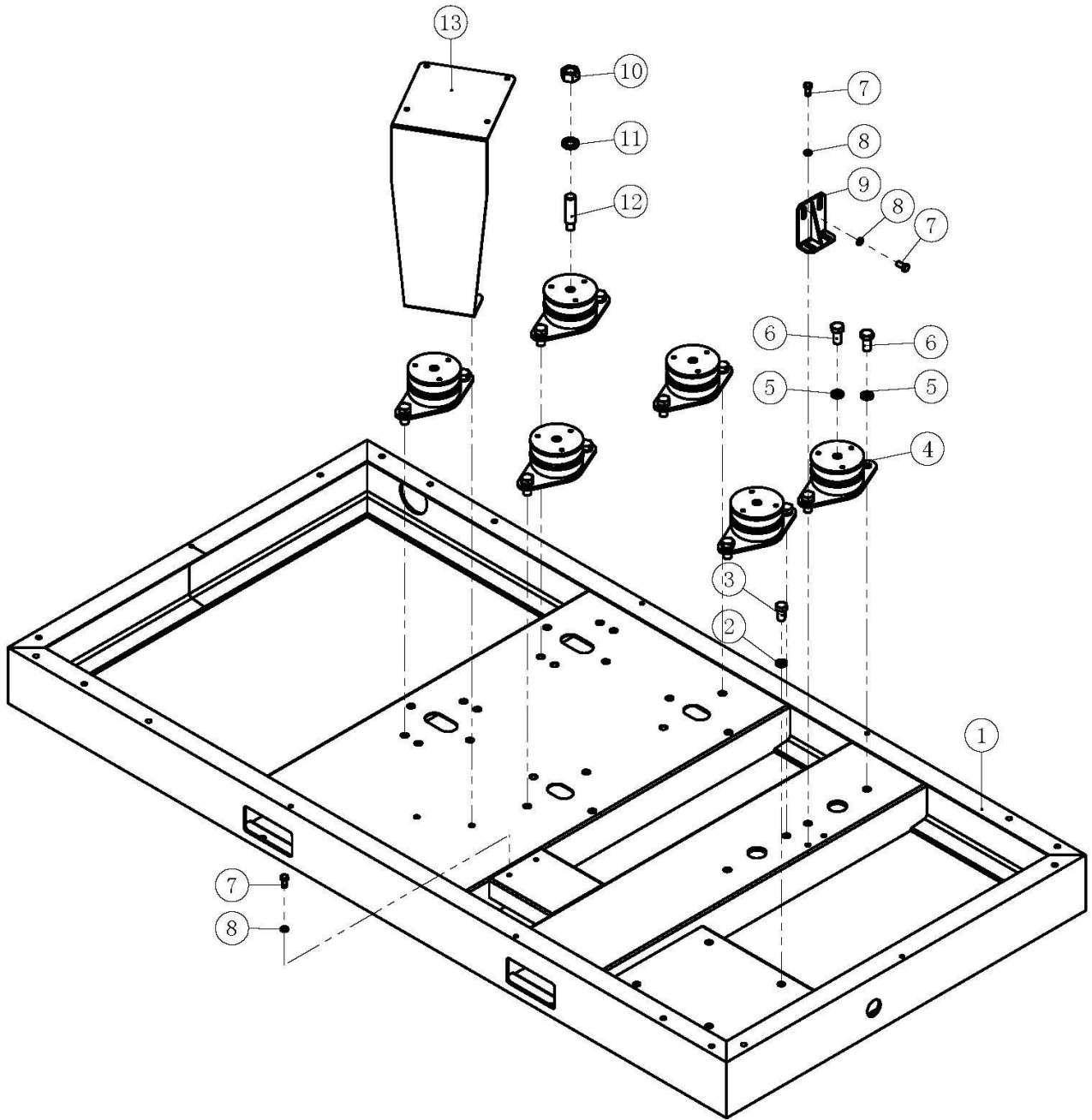


Base Mounting

(FS)

NO.	PN	DESCRIPTION	QTY	REMARK
1	94433 02010 00	Base	1	150-115/150-150
	95433 02010 00			200-115/200-150
2	01365 18000 00	Washer	4	18
3	01307 18035 00	Bolt	4	M18×35
4	02905 00004 00	Absorber	6	
5	01365 20000 00	Washer	14	20
6	01307 20040 00	Bolt	14	M20×40
7	01307 12025 00	Bolt	6	M12×25
8	01365 12000 00	Washer	6	12
9	20438 02001 00	Fixed plate, shipping	1	
10	01322 27000 00	Nut	4	M27
11	01365 27000 00	Washer	4	27
12	22315 02001 03	Stud	4	

Base Mounting

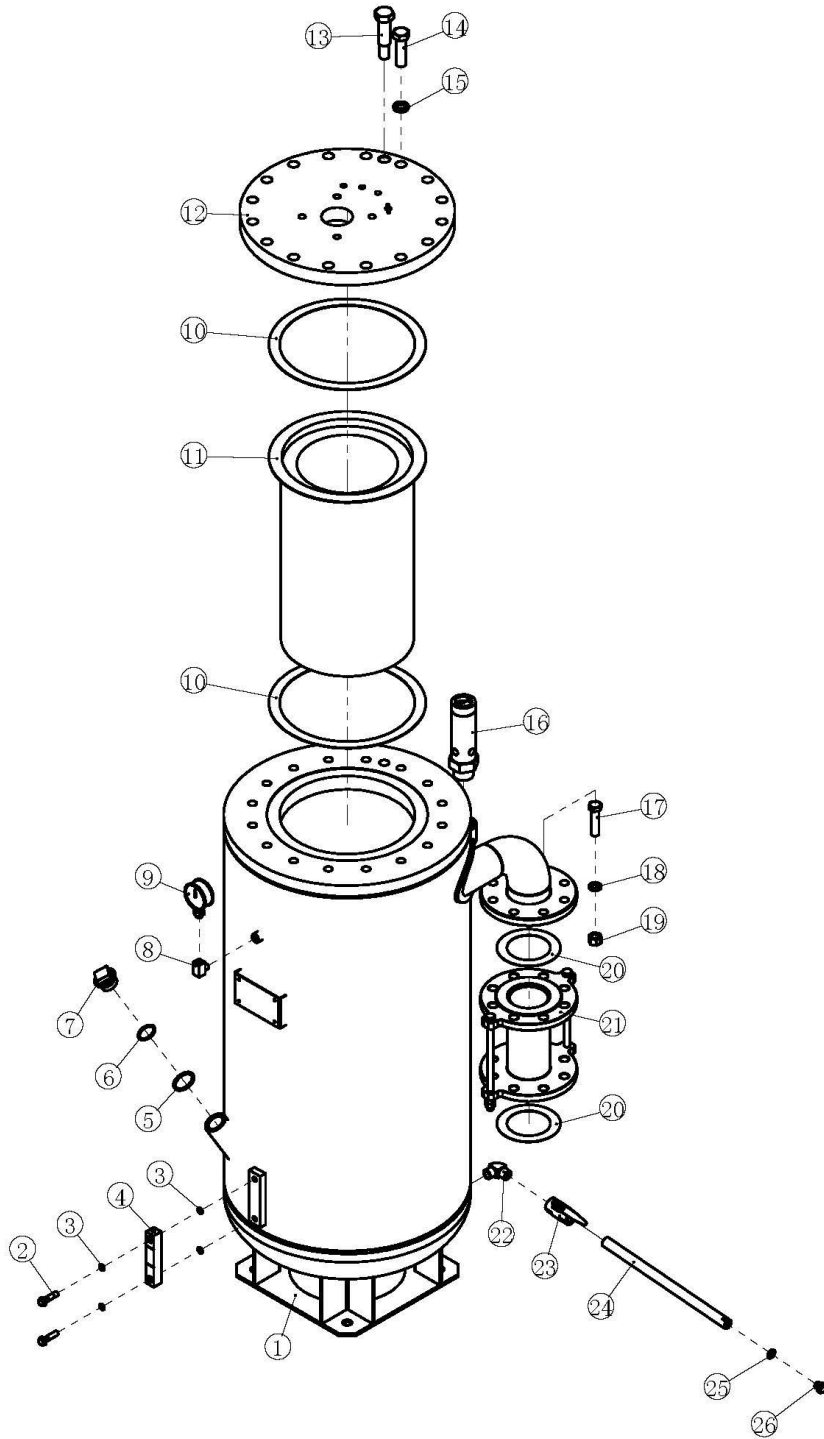


Base Mounting

(VSD)

NO.	PN	DESCRIPTION	QTY	REMARK
1	94444 02010 00	Base	1	150-VSD
	95444 02010 00			200-VSD
2	01365 18000 00	Washer	4	18
3	01307 18035 00	Bolt	4	M18×35
4	02905 00004 00	Absorber	6	
5	01365 20000 00	Washer	14	20
6	01307 20040 00	Bolt	14	M20×40
7	01307 12025 00	Bolt	6	M12×25
8	01365 12000 00	Washer	6	12
9	20438 02001 00	Fixed plate,shipping	1	
10	01322 27000 00	Nut	4	M27
11	01365 27000 00	Washer	4	27
12	22315 02001 03	Stud	4	
13	95444 02001 00	Air filter support	1	

Reservoir

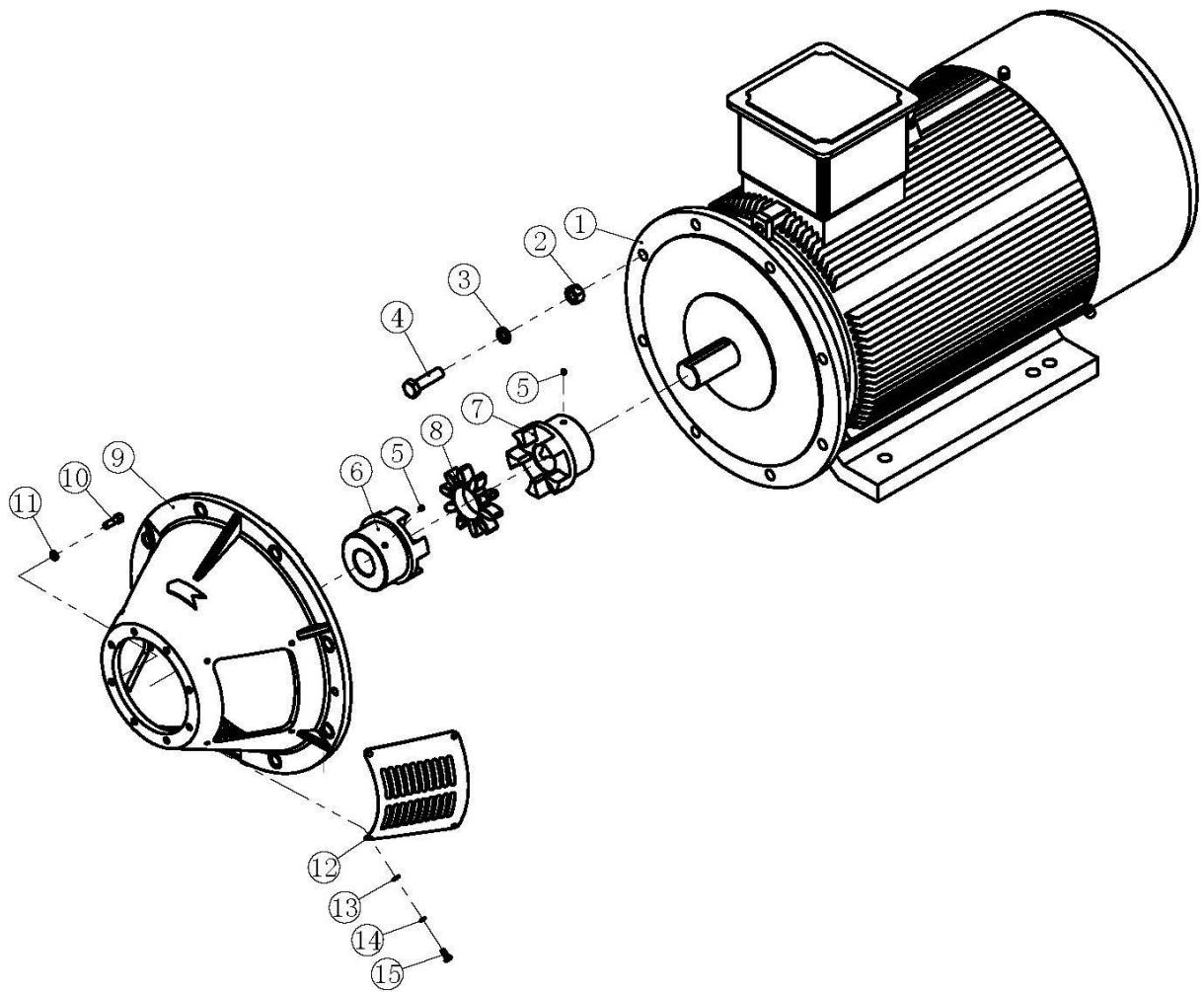


Reservoir

(/)

NO.	PN	DESCRIPTION	QTY	REMARK
1	95443 03010 00	Fluid/air separator	1	
2	13315 03001 00	Hollow bolt	2	M10X40
3	02901 01060 10	O-ring	4	10.6X1.8
4	13315 03002 00	Oil sight glass	1	
5	02201 03320 00	Screw washer	1	
6	02901 03350 30	O-ring	1	33.5X3.55
7	13340 03003 00	Screw plug	1	
8	98042 00007 00	Joint	1	
9	02801 06308 00	Pressure gauge	1	
10	02216 27324 61	Gasket	1	
11	55275 325460	Fluid/air separator element		
12	2258 03010 60	Top cover	1	
13	821141 103030	Bolt	1	
14	01307 20070 00	Bolt	16	M20×70
15	01365 20000 00	Washer	16	20
16	01601 32120 01	Relief valve	1	1.2Mpa/115PSI
17	01306 16065 00	Bolt	16	M16×65
18	01365 16000 00	Washer	16	16
19	01322 16000 00	Nut	16	M16
20	02216 08016 06	Gasket	2	
21	19315 03001 21	Flexible pipe	1	
22	99121 03002 00	Elbow	1	
23	01613 01500 00	Ball valve	1	DN15
24	20458 03002 00	Connecting pipe	1	
25	01534 14000 00	Bonded washer	1	14
26	13315 03005 00	Screw plug	1	M14X1.5

Driving System and Electrical Motor

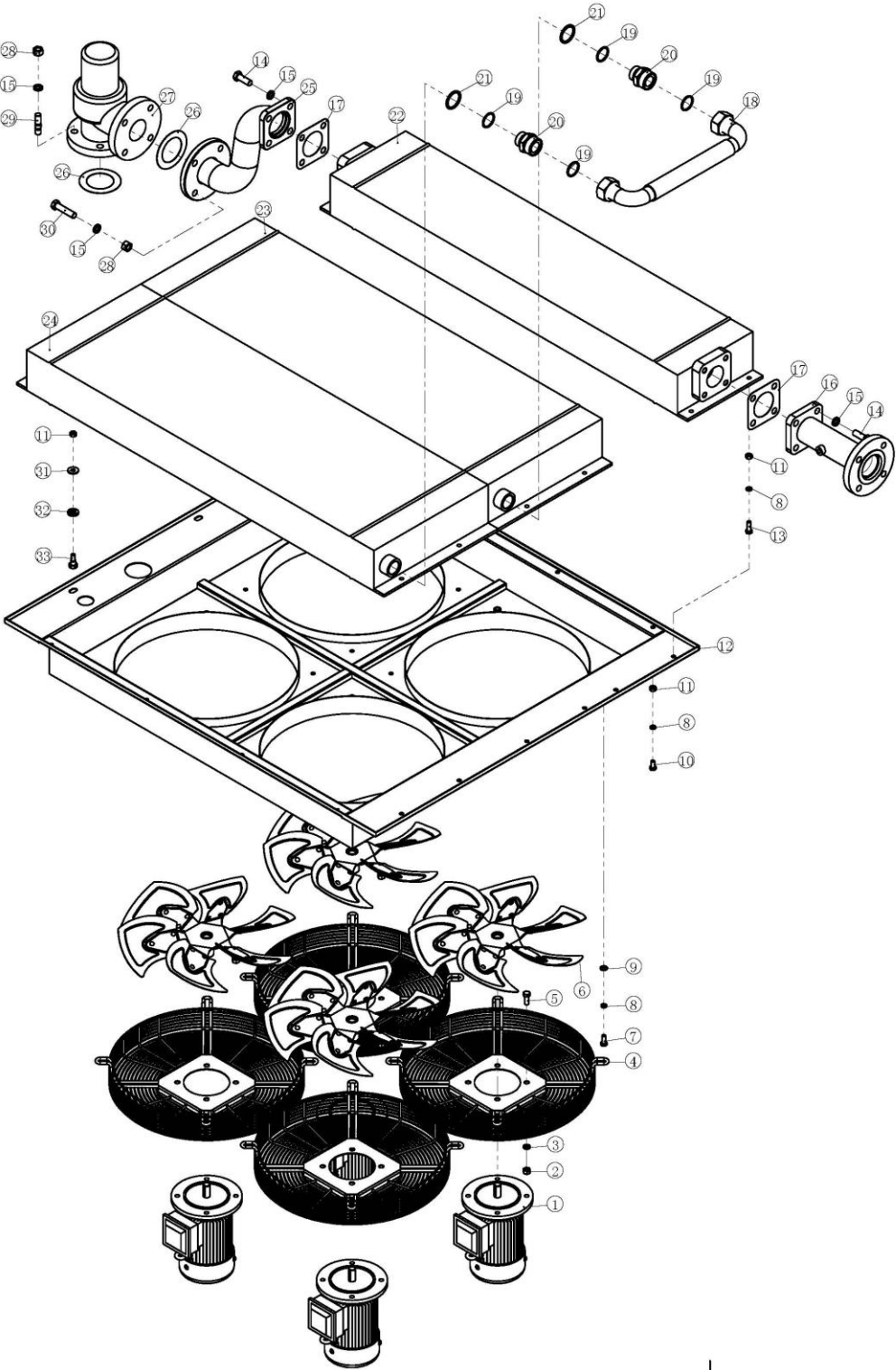


Driving System and Electrical Motor

(/)

NO.	PN	DESCRIPTION	QTY	REMARK
1	62110 46642 25	Motor	1	150HP
	62150 46642 25			200HP
	62110 46942 25			150HP/VSD
	62150 46942 25			200HP/VSD
2	01322 22000 00	Nut	8	M22
3	01365 22000 00	Washer	8	22
4	01307 22080 00	Bolt	8	M22×80
5	01347 08008 00	Set bolt	2	M8X8
6	01905 07505 50	Half coupling	1	KRSD 150-115 KRSD 150-150 KRSD 150-VSD KRSD 200-150
	01905 07506 00			KRSD 200-115 KRSD 200-VSD
7	01905 07506 50	Half coupling	1	
8	01908 07500 00	Elastomer	1	
9	08202300	Connecting cylinder	1	KRSD 150-115 KRSD 150-150 KRSD 150-VSD KRSD 200-150
	08901150			KRSD 200-115 KRSD 200-VSD
10	01344 12035 00	Bolt	8	M12×35
11	01365 12000 00	Washer	8	12
12	01910 14330 10	Cylinder cover	2	KRSD 150-115 KRSD 150-150 KRSD 150-VSD KRSD 200-150
	01910 15215 10			KRSD 200-115 KRSD 200-VSD
13	01366 08000 00	Washer	8	8
14	01365 08000 00	Washer	8	8
15	01307 08020 00	Bolt	8	M8×20

Air Cooler



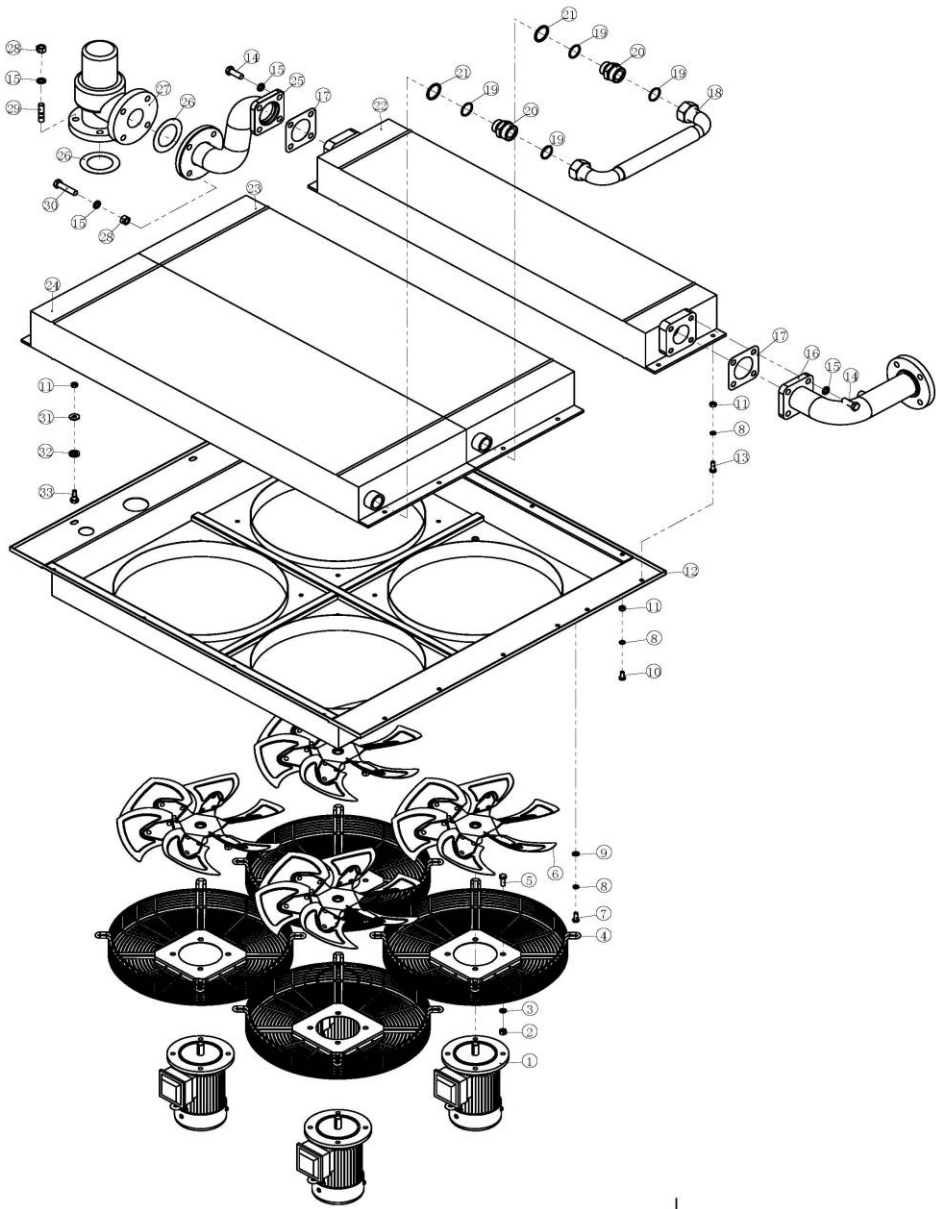
Air Cooler

(FS)

NO.	PN	DESCRIPTION	QTY	REMARK
1	64175 46651 21	Motor	4	0.75kW
2	01322 12000 00	Nut	16	M12
3	01365 12000 00	Washer	16	12
4	07205 00500 02	Net cover	4	
5	01307 12030 00	Bolt	16	M12×30
6	07204 50010 00	Fan blade	4	
7	01307 10025 00	Bolt	16	M10×25
8	01365 10000 00	Washer	30	10
9	01366 10000 00	Washer	16	10
10	01307 10020 00	Bolt	8	M10×20
11	01322 10000 00	Nut	17	M10
12	22458 05001 00	Air director	1	
13	01307 10030 00	Bolt	6	M10×30
14	01307 16045 00	Bolt	8	M16×45
15	01365 16000 00	Washer	16	16
16	95433 05007 00	Discharge pipe	1	
17	21315 05003 00	Gasket	2	
18	22458 05004 00	Connecting pipe	1	
19	02901 03870 30	O-ring	4	38.7X3.55
20	21315 06100 09	Joint	2	
21	02201 00032 00	Screw washer	2	
22	21315 05010 35	After cooler	1	
23	21315 05010 25	Oil cooler	1	
24	21315 05010 15	Oil cooler	1	
25	22458 05006 00	Discharge pipe	1	
26	02216 06516 06	Gasket	2	
27	01612 06502 00	MPV	1	
27A*	04006 06502 00	MPV kit	1	Check valve element, Spring A, O-ring A, Valve element, O-ring B, Spring B, Spring C
28	01322 16000 00	Nut	8	M16
29	01391 16045 00	Stud	4	M16×45
30	01306 16070 00	Bolt	4	M16×70
31	21316 05003 00	Flat gasket	3	
32	21316 05002 00	Rubber gasket	3	
33	21316 05001 00	Bolt	3	

*Items not shown on the Drawing.

Air Cooler



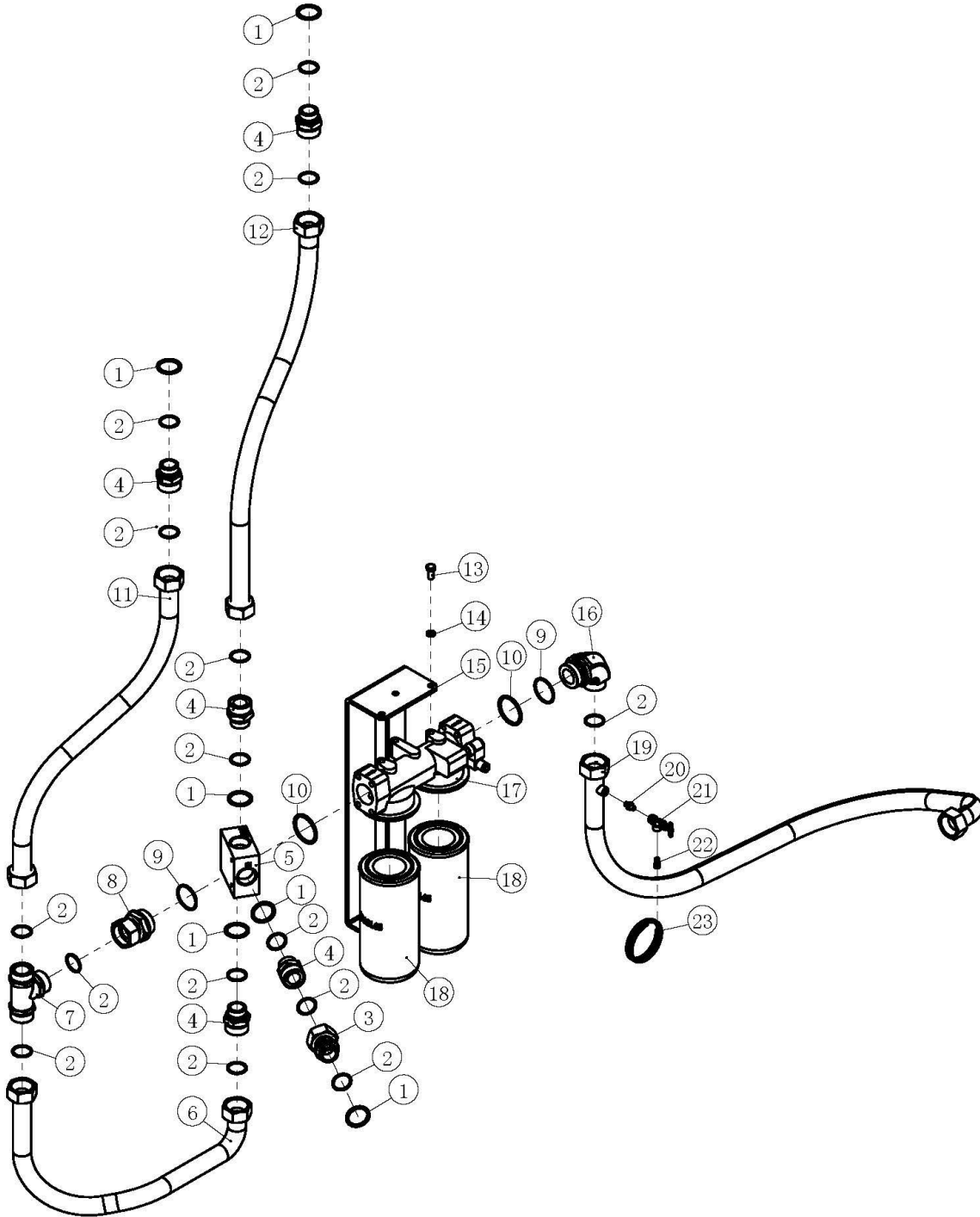
Air Cooler

(VSD)

NO.	PN	DESCRIPTION	QTY	REMARK
1	64175 46651 21	Motor	4	0.75kW
2	01322 12000 00	Nut	16	M12
3	01365 12000 00	Washer	16	12
4	07205 00500 02	Net cover	4	
5	01307 12030 00	Bolt	16	M12×30
6	07204 50010 00	Fan blade	4	
7	01307 10025 00	Bolt	16	M10×25
8	01365 10000 00	Washer	30	10
9	01366 10000 00	Washer	16	10
10	01307 10020 00	Bolt	8	M10×20
11	01322 10000 00	Nut	17	M10
12	22458 05001 00	Air director	1	
13	01307 10030 00	Bolt	6	M10×30
14	01307 16045 00	Bolt	8	M16×45
15	01365 16000 00	Washer	16	16
16	95444 05007 00	Discharge pipe	1	
17	21315 05003 00	Gasket	2	
18	22458 05004 00	Connecting pipe	1	
19	02901 03870 30	O-ring	4	38.7X3.55
20	21315 06100 09	Joint	2	
21	02201 00032 00	Screw washer	2	
22	21315 05010 35	After cooler	1	
23	21315 05010 25	Oil cooler	1	
24	21315 05010 15	Oil cooler	1	
25	22458 05006 00	Discharge pipe	1	
26	02216 06516 06	Gasket	2	
27	01612 06502 00	MPV	1	
27A*	04006 06502 00	MPV kit	1	Check valve element, Spring A, O-ring A, Valve element, O-ring B, Spring B, Spring C
28	01322 16000 00	Nut	8	M16
29	01391 16045 00	Stud	4	M16×45
30	01306 16070 00	Bolt	4	M16×70
31	21316 05003 00	Flat gasket	3	
32	21316 05002 00	Rubber gasket	3	
33	21316 05001 00	Bolt	3	

*Item not shown on the Drawing.

Fluid Piping



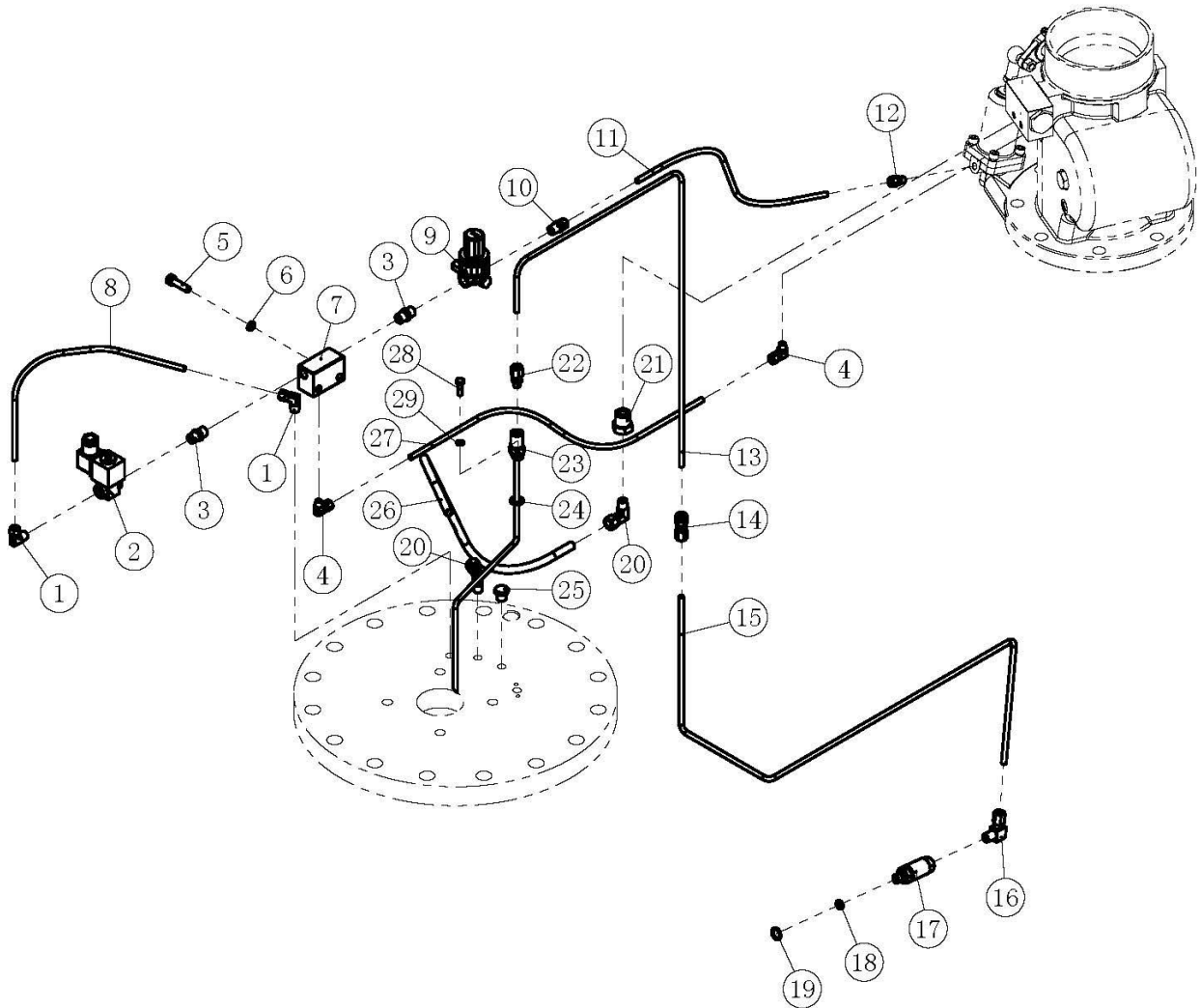
Fluid Piping

(/)

NO.	PN	DESCRIPTION	QTY	REMARK
1	02201 00032 00	Screw washer	6	
2	02901 03870 30	O-ring	15	38.7X3.55
3	21315 06001 00	Bonded joint	1	
4	21315 06100 09	Joint	5	
5	01611 03283 00	Thermal valve	1	
5A*	04004 32000 00	Thermal valve kit	1	Spring, Sleeve. Valve element, O-ring 47.72x2.62
6	22458 06005 00	Oil pipe	1	To tee joint
7	21315 06009 00	Tee joint	1	
8	99136 06001 00	Bonded joint	1	
9	02901 05600 30	O-ring	2	56X3.55
10	02201 00050 00	Screw washer	2	
11	22458 06004 00	Oil pipe	1	Outlet cooler
12	22458 06003 00	Oil pipe	1	Inlet cooler
13	01307 12025 00	Bolt	3	M12×25
14	01365 12000 00	Washer	3	12
15	22435 06001 02	Fixed plate	1	
16	22458 06100 00	Adjustable elbow	1	G2-M52X2
17	07710 20382 80	Double filter head	1	
18	07709 13530 20	Oil filter	2	
19	95433 06006 00	Oil pipe	1	Inlet aircend
20	98018 07011 06	Joint	1	
21	01613 00600 99	Sample valve	1	
22	01511 06100 00	Joint	1	
23		Nylon tube	1	Ø6*400

*Item not shown on the drawing.

Air Piping

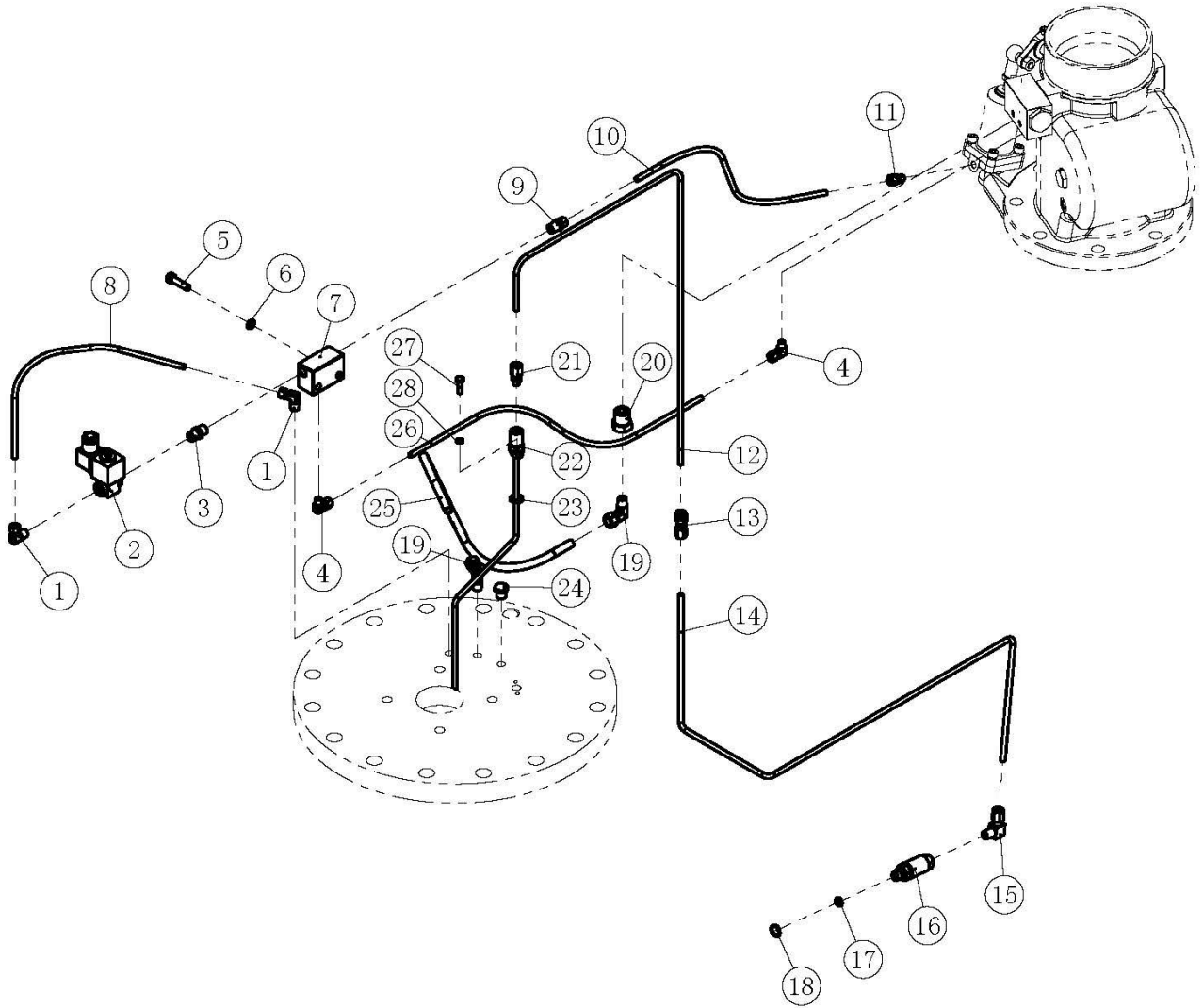


Air Piping

(FS)

NO.	PN	DESCRIPTION	QTY	REMARK
1	01517 06130 00	Joint	2	
2	01603 31015 00	Solenoid valve	1	12bar, 1.5
3	98018 07011 00	Joint	2	
4	01517 06100 00	Joint	2	
5	01344 08030 00	Bolt	2	M8×30
6	01365 08000 00	Washer	2	8
7	16315 07005 00	Connecting seat	1	
8	22458 07120 00	Control pipe	1	
9	01604 00001 00	Inverse proportion valve	1	
10	01511 06130 00	Joint	1	
11	22458 07140 00	Control pipe	1	
12	01511 06100 00	Joint	1	
13	22458 07100 00	Oil return pipe	1	
14	01558 06000 00	Joint	1	
15	22458 07110 00	Oil return pipe	1	
16	01513 06130 00	Joint	1	
17	01610 01015 01	Visible check valve	1	HYS-1A φ 1.5
18	02901 00950 10	O-ring	1	9.5X1.8
19	02201 01215 00	Screw washer	1	
20	01517 10130 00	Joint	2	
21	16315 07004 70	Joint	1	
22	01512 06100 00	Joint	1	
23	22424 07009 00	Oil return pipe	1	
24	01534 12000 00	Bonded washer	1	12
25	02103 00800 00	Screw plug	1	R1/4
26	22458 07150 00	Control pipe	1	
27	22458 07130 00	Control pipe	1	
28	01307 06020 00	Bolt	2	M6×20
29	01365 06000 00	Washer	2	6

Air Piping

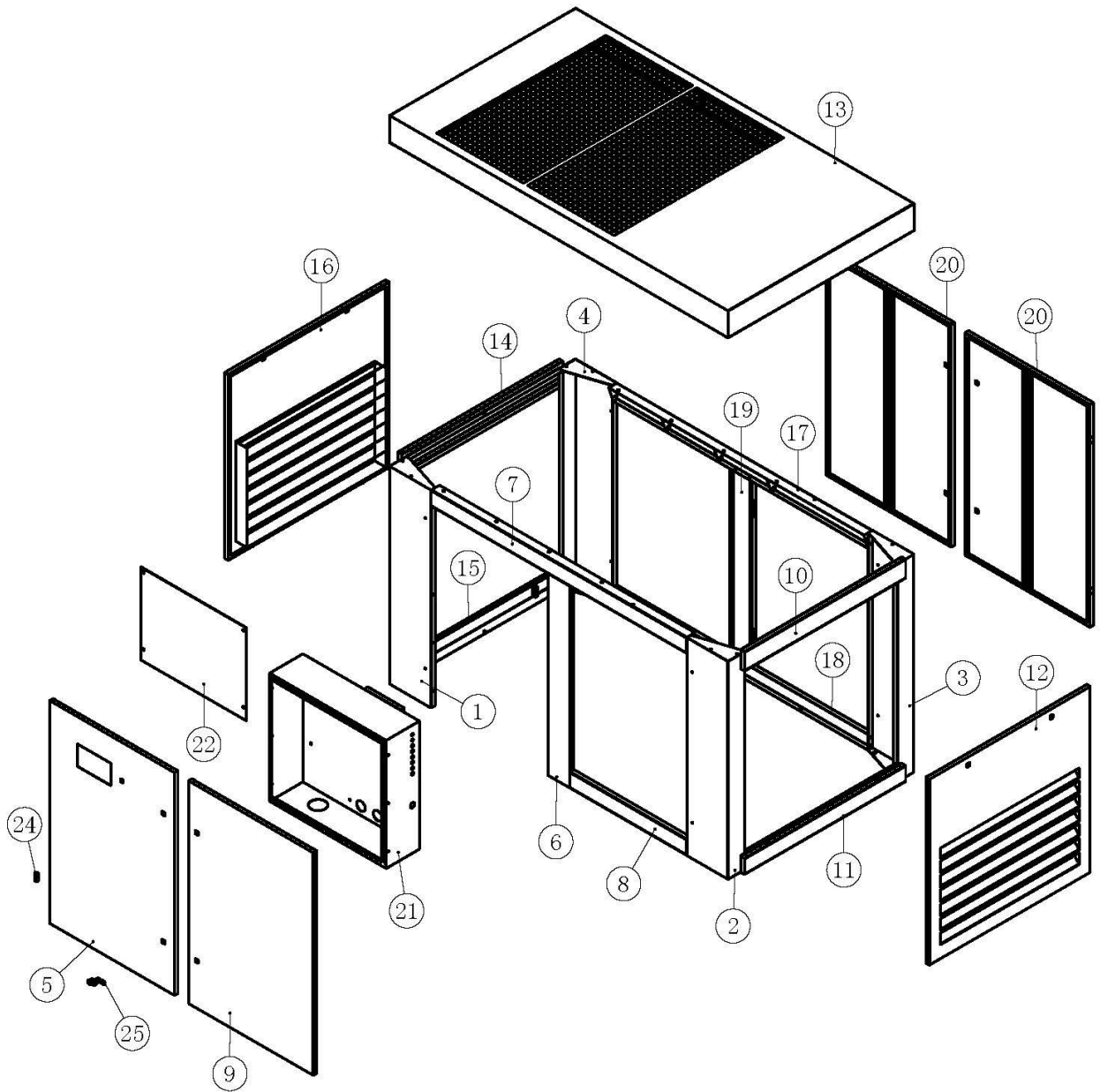


Air Piping

(VSD)

NO.	PN	DESCRIPTION	QTY	REMARK
1	01517 06130 00	Joint	2	
2	01603 31015 00	Solenoid valve	1	12bar, 1.5
3	98018 07011 00	Joint	1	
4	01517 06100 00	Joint	2	
5	01344 08030 00	Bolt	2	M8×30
6	01365 08000 00	Washer	2	8
7	16315 07005 00	Connecting seat	1	
8	22458 07120 00	Control pipe	1	
9	01511 06130 00	Joint	1	
10	22458 07140 00	Control pipe	1	
11	01511 06100 00	Joint	1	
12	22458 07100 00	Oil return pipe	1	
13	01558 06000 00	Joint	1	
14	22458 07110 00	Oil return pipe	1	
15	01513 06130 00	Joint	1	
16	01610 01015 01	Visible check valve	1	HYS-1A φ 1.5
17	02901 00950 10	O-ring	1	9.5X1.8
18	02201 01215 00	Screw washer	1	
19	01517 10130 00	Joint	2	
20	16315 07004 70	Joint	1	
21	01512 06100 00	Joint	1	
22	22424 07009 00	Oil return pipe	1	
23	01534 12000 00	Bonded washer	1	12
24	02103 00800 00	Screw plug	1	R1/4
25	22458 07150 00	Control pipe	1	
26	22458 07130 00	Control pipe	1	
27	01307 06020 00	Bolt	2	M6×20
28	01365 06000 00	Washer	2	6

Cabinet

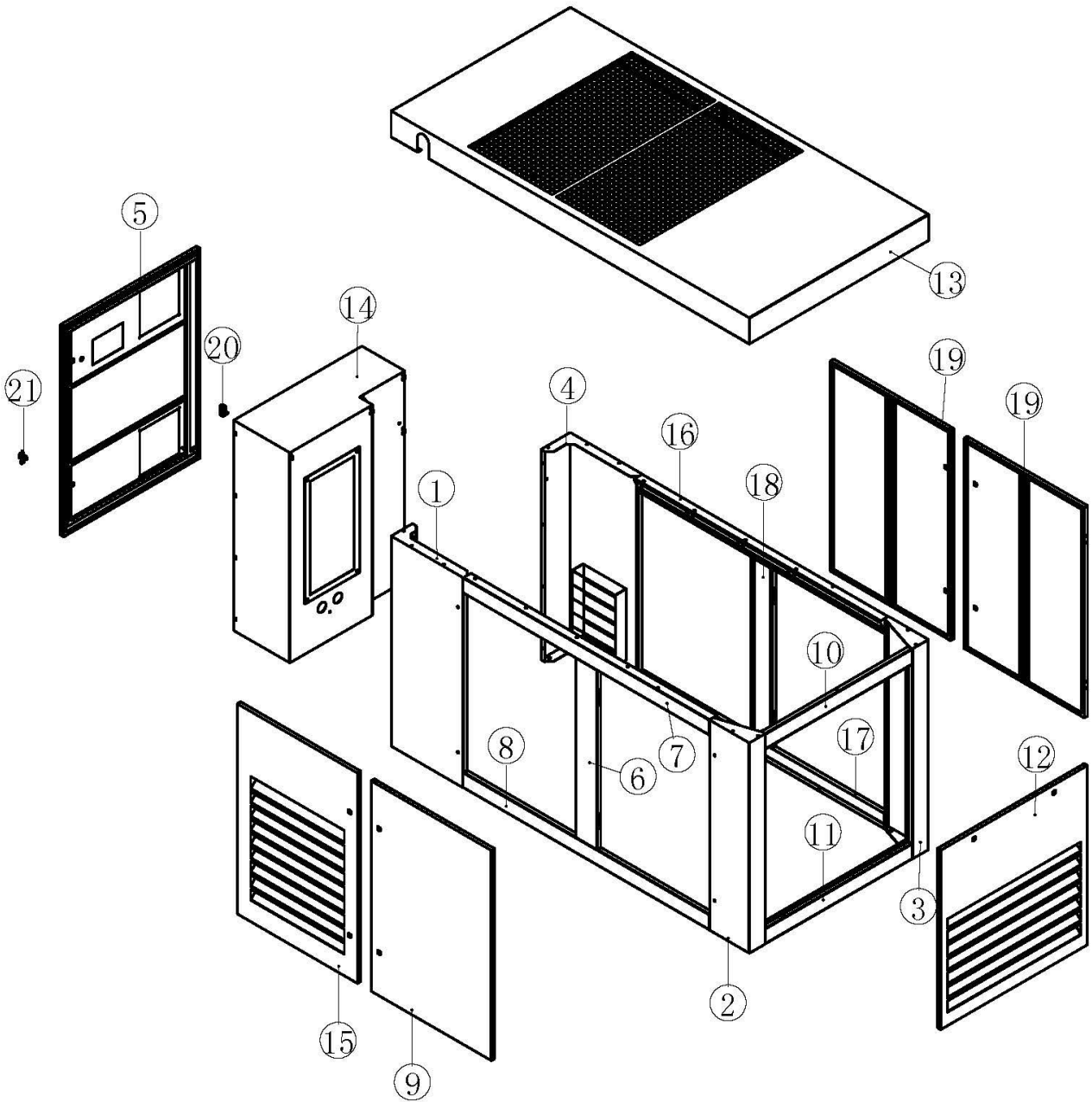


Cabinet

(FS)

NO.	PN	DESCRIPTION	QTY	REMARK
1	22458 08001 00	Support	1	
2	22458 08002 00	Support	1	
3	22458 08003 00	Support	1	
4	22458 08004 00	Support	1	
5	22458 08005 00	Door	1	
6	22458 08006 00	Support	1	
7	22458 08007 00	Beam	1	
8	22458 08008 00	Beam	1	
9	22458 08009 00	Door	1	
10	22458 08100 00	Beam	1	
11	22458 08110 00	Beam	1	
12	22458 08120 00	Door	1	
13	22458 08130 00	Top cover	1	
14	22458 08140 00	Beam	1	
15	22458 08150 00	Beam	1	
16	22458 08160 00	Door	1	
17	22458 08170 00	Beam	1	
18	22458 08180 00	Beam	1	
19	22458 08190 00	Support	1	
20	22458 08200 00	Door	2	
21	95433 08210 00	Electric cabinet	1	
22	22458 09001 00	Electric plate	1	
23	02702 00501 00	Lock	1	
24	02702 22200 00	Hinge	8	
25	02702 71111 03	Lock	12	

Cabinet

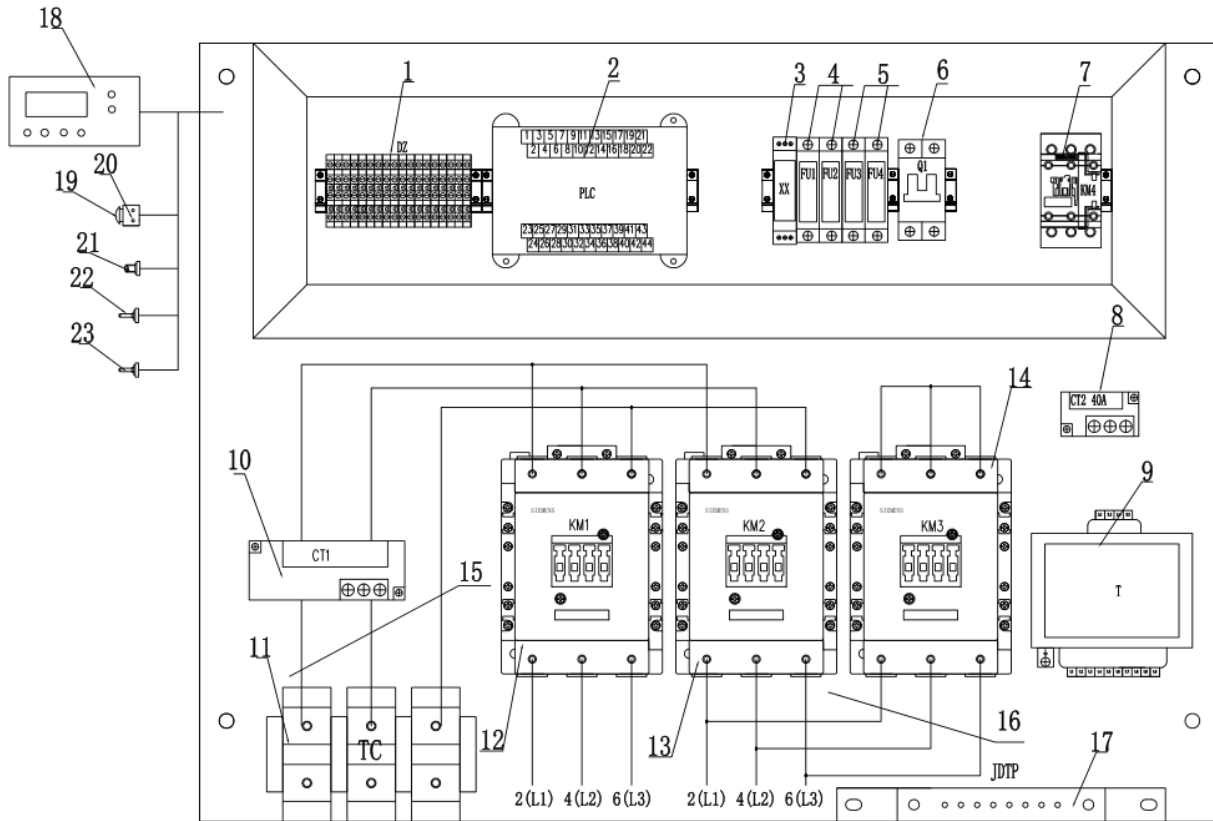


Cabinet

(VSD)

NO.	PN	DESCRIPTION	QTY	REMARK
1	95444 08001 00	Support	1	
2	22458 08002 00	Support	1	
3	22458 08003 00	Support	1	
4	95444 08004 00	Support	1	
5	95444 08005 00	Door	1	
6	22441 08006 00	Support	1	
7	22458 08007 00	Beam	1	
8	22441 08008 00	Beam	1	
9	22458 08009 00	Door	1	
10	22458 08100 00	Beam	1	
11	22458 08110 00	Beam	1	
12	22458 08120 00	Door	1	
13	22441 08130 00	Top cover	1	
14	95444 08210 00	Electric cabinet	1	
15	22441 08160 00	Door	1	
16	22458 08170 00	Beam	1	
17	22458 08180 00	Beam	1	
18	22458 08190 00	Support	1	
19	22458 08200 00	Door	2	
20	02701 20601 00	Hinge	10	
21	02702 71111 01	Lock	12	
	07706 09806 02	Electrical cabinet air filter frame	2	
	160004-001	Filter element		
	07211 25091 20	Electrical cabinet fan	2	

Electrical Enclosure



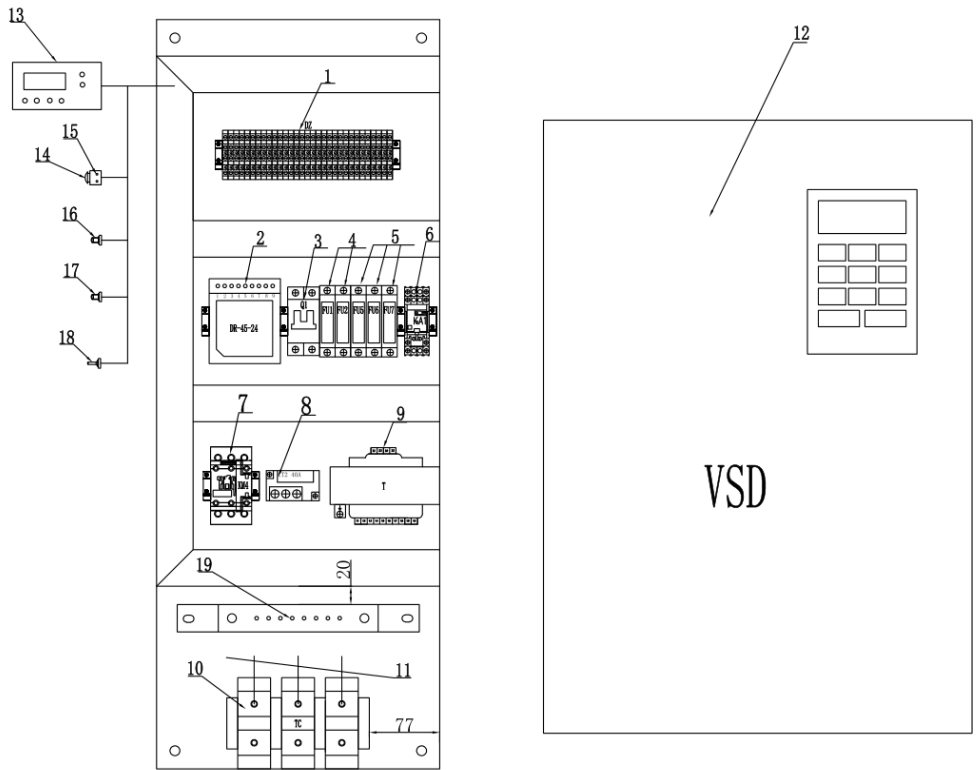
Electrical Enclosure

(KRSD-150)

NO.	PN	DESCRIPTION	QTY	REMARK
1	08703 00004 00	Terminal block	18	DZ
2	02811 00240 55	Controller	1	PLC
3	02814 00080 00	Phase protector	1	XX
4	02820 00001 00	Fuse block	2	FU1-FU2
5	02820 00001 00	Fuse block	2	FU3-FU4
6	02819 06526 00	Miniature circuit breaker	1	Q1
7	02825 60018 01	Fan motor contactor	1	KM4
8	02824 20040 00	Fan motor transformer	1	CT2
9	02818 05001 50	Transformer	1	T
10	02824 00400 01	Current transformer	1	CT1
11	08703 00240 00	Terminal block	3	TC
12	02825 60170 01	AC contactor	1	KM1
13	02825 60170 01	AC contactor	1	KM2
14	02825 60150 01	AC contactor	1	KM3
15	08704 03095 00	Cable	1.5M	BVR
16	08704 01050 00	Cable	2.5M	BVR
17	02829 42026 50	Grounding copper bar	1	JDTP
18	02815 00202 02	Monitor	1	XSQ
19	02827 04844 00	Emergency button	1	JT
20	02827 04104 00	Emergency button support	1	JT
21	02810 00016 00	Pressure sensor	1	DP
22	02810 10006 00	Temperature sensor	1	DT
23	02810 10006 00	Temperature sensor	1	ST
*24	02821 10006 00	Fuse	2	FU1-FU2
*25	02821 10002 00	Fuse	2	FU3-FU4

Note: * Items are not shown on the drawing.

Electrical Enclosure



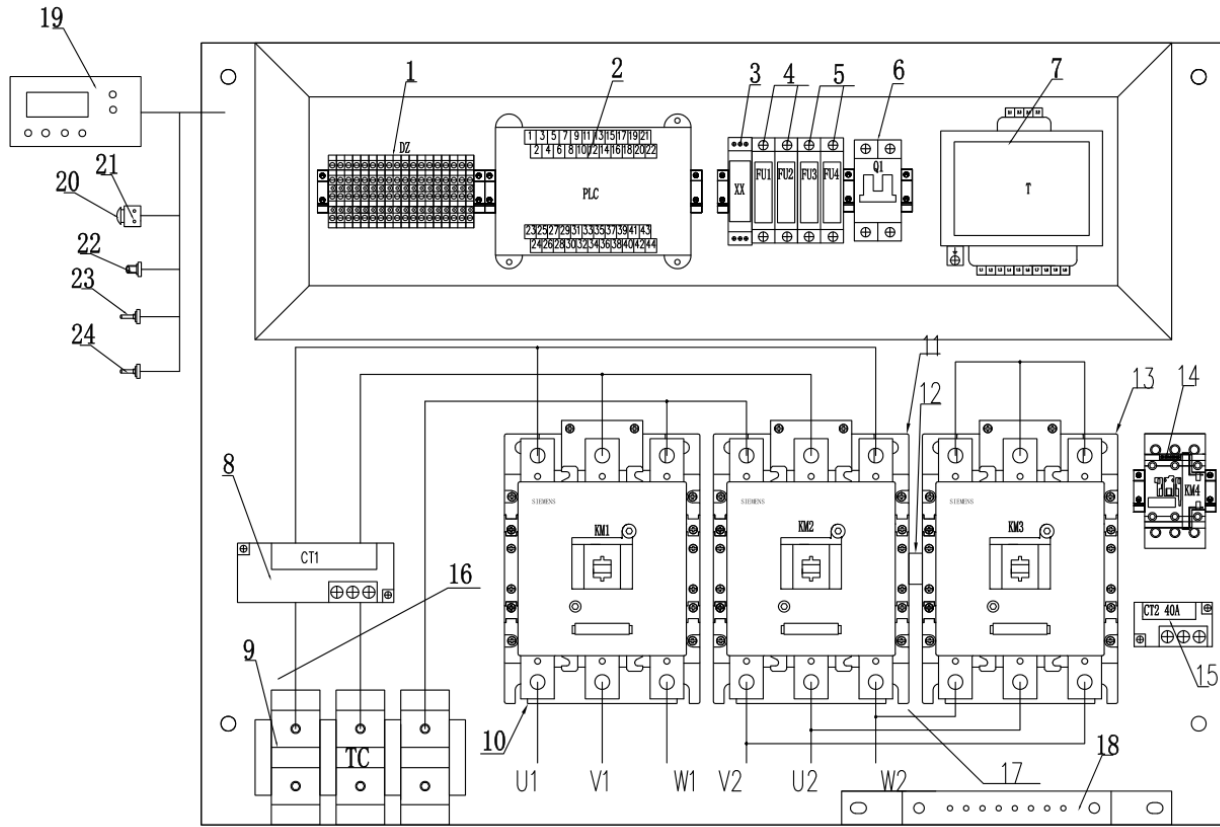
Electrical Enclosure

(KRSD-150VSD)

NO.	PN	DESCRIPTION	QTY	REMARK
1	08703 00004 00	Terminal block	30	DZ
2	02808 04524 00	DC power supply	1	DR
3	02819 06526 00	Miniature circuit breaker	1	Q1
4	02820 00001 00	Fuse block	2	FU1-FU2
5	02820 00001 00	Fuse block	3	FU5-FU7
6	02814 00002 00	Intermediate relay seat	1	KA6
	02814 01102 00	Intermediate relay head	1	
7	02825 60018 01	Fan motor contactor	1	KM4
8	02824 20040 00	Fan motor transformer	1	CT2
9	02818 05001 50	Transformer	1	T
10	08703 00240 00	Terminal block	3	TC
11	08704 03095 00	Cable	2.4M	BVR
12	02828 50250 00	VSD	1	VSD
13	02811 15154 47	Monitor	1	XSQ
14	02827 04844 00	Emergency button	1	JT
15	02827 04104 00	Emergency button support	1	JT
16	02810 00016 00	Pressure sensor	1	DP
17	02810 10006 00	Temperature sensor	1	DT
18	02810 10006 00	Temperature sensor	1	ST
19	02825 43026 50	Grounding copper bar	1	JDTP
*20	02821 10006 00	Fuse	2	FU1-FU2
*21	02821 10002 00	Fuse	3	FU5-FU7

Note: * Items are not shown on the drawing.

Electrical Enclosure



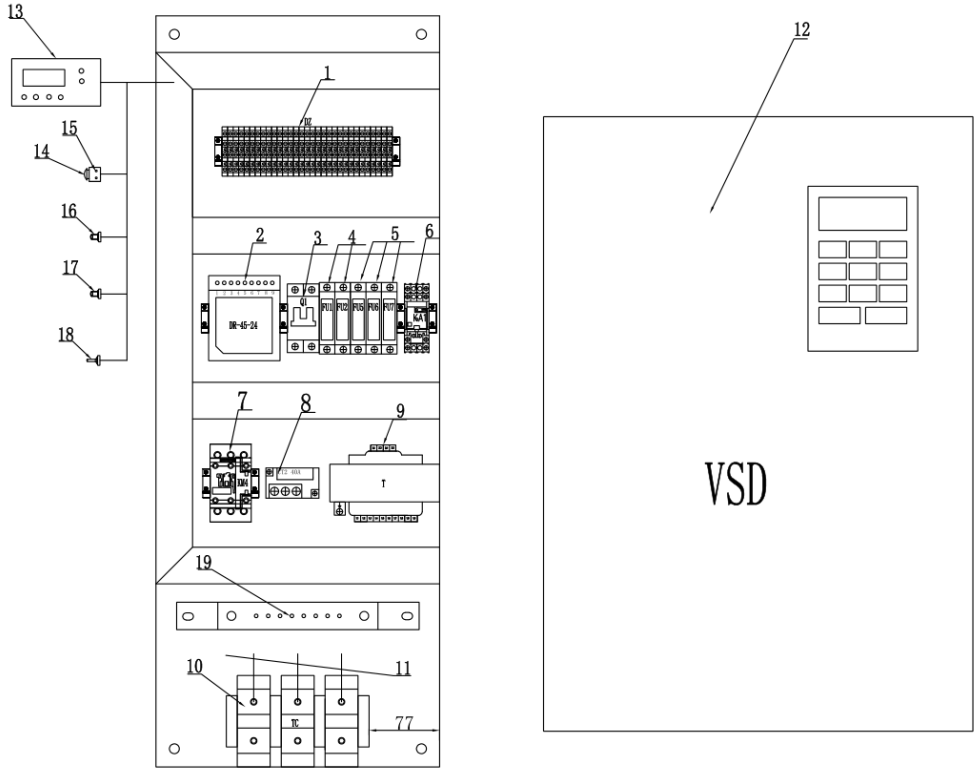
Electrical Enclosure

(KRSD-200)

NO.	PN	DESCRIPTION	QTY	REMARK
1	08703 00004 00	Terminal block	18	DZ
2	02811 00240 55	Controller	1	PLC
3	02814 00080 00	Phase protector	1	XX
4	02820 00001 00	Fuse block	2	FU1-FU2
5	02820 00001 00	Fuse block	2	FU3-FU4
6	02819 06526 00	Miniature circuit breaker	1	Q1
7	02818 05001 50	Transformer	1	T
8	02824 00400 01	Current transformer	1	CT1
9	08703 00240 00	Terminal block	3	TC
10	02825 60245 01	AC contactor	1	KM1
11	02825 60245 01	AC contactor	1	KM2
12	09705 31954 20	Mechanical interlock	1	HS
13	02825 60245 01	AC contactor	1	KM3
14	02825 60025 01	Fan motor contactor	1	KM4
15	02824 20040 00	Fan motor transformer	1	CT2
16	08704 02070 00	Cable	3.0m	BVR
17	02829 20225 01	Contactor copper bar	1	TP
18	02829 42026 50	Grounding copper bar	1	JDTP
19	02815 00202 02	Monitor	1	XSQ
20	02827 04844 00	Emergency button	1	JT
21	02827 04104 00	Emergency button support	1	JT
22	02810 00016 00	Pressure sensor	1	DP
23	02810 10006 00	Temperature sensor	1	DT
24	02810 10006 00	Temperature sensor	1	ST
*25	02821 10006 00	Fuse	2	FU1-FU2
*26	02821 10002 00	Fuse	2	FU3-FU4

Note: * Items are not shown on the drawing.

Electrical Enclosure



Electrical Enclosure

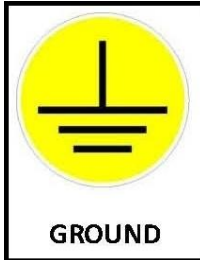
(KRSD-200VSD)

NO.	PN	DESCRIPTION	QTY	REMARK
1	08703 00004 00	Terminal block	30	DZ
2	02808 04524 00	DC power supply	1	DR
3	02819 06526 00	Miniature circuit breaker	1	Q1
4	02820 00001 00	Fuse block	2	FU1-FU2
5	02820 00001 00	Fuse block	3	FU5-FU7
6	02814 00002 00	Intermediate relay seat	1	KA6
	02814 01102 00	Intermediate relay head	1	
7	02825 60025 01	Fan motor contactor	1	KM4
8	02824 20040 00	Fan motor transformer	1	CT2
9	02818 05001 50	Transformer	1	T
10	08703 00240 00	Terminal block	3	TC
11	08704 02070 00	Cable	4.8M	BVR
12	02828 50362 00	VSD	1	VSD
13	02811 15154 47	Monitor	1	XSQ
14	02827 04844 00	Emergency button	1	JT
15	02827 04104 00	Emergency button support	1	JT
16	02810 00016 00	Pressure sensor	1	DP
17	02810 10006 00	Temperature sensor	1	DT
18	02810 10006 00	Temperature sensor	1	ST
19	02825 43026 50	Grounding copper bar	1	JDTP
*20	02821 10006 00	Fuse	2	FU1-FU2
*21	02821 10002 00	Fuse	3	FU5-FU7

Note: * Items are not shown on the drawing.

Decals

Decals information is shown as following.



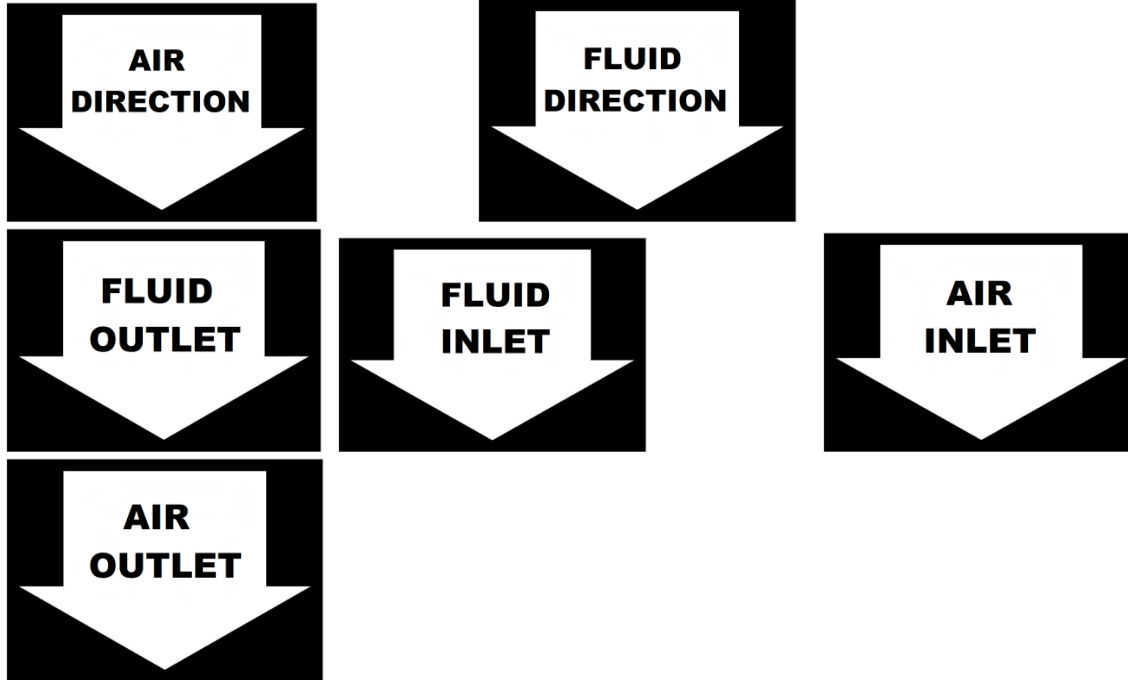
Decals



NOTE:

1. DECALS P/N : 142939

Decals



NOTE:

1. DECALS P/N : 142939

Standard Terms and Conditions

These terms and conditions govern the sale of Products (“Rotary Screw Air Compressors and parts”) and provisions of services by Kaishan Compressor USA, LLC (Seller) and its authorized representative or buyer. These terms and conditions (“Agreement”) take precedence over Buyer’s supplemental or conflicting terms and conditions to which notice of objection is hereby given. Neither Seller’s commencement of performance or delivery shall be deemed or construed as acceptance of Buyer’s supplemental or conflicting terms and conditions. KCA’s failure to object to conflicting or additional terms will not change or add to the terms of this agreement. Buyer’s acceptance of the Products and/or Services from Seller shall be deemed to constitute acceptance of the terms and conditions contained herein.

Orders: All orders placed by Buyer are subject to acceptance by Seller. Orders may not be canceled or rescheduled without Seller’s written consent. All orders must identify the products, unit quantities, part numbers, applicable prices and requested delivery dates of the Products being purchased. Seller may at its sole discretion allocate Product among its Buyer. Seller may designate certain Products and Services as non-cancelable, non-returnable and the sale of such Products shall be subject to the special terms and conditions contained in Seller’s Customer Acknowledgement or Non-Returnable Product Form, which shall prevail and supersede any inconsistent terms and conditions contained herein or elsewhere.

Prices: The prices of the Products are those prices specified on the front of the invoice or contained within an agreed written contract. Price quotations shall automatically expire in thirty (30) days from the date issued, or as otherwise stated in the quotation.

Taxes: Unless otherwise agreed to in writing by Seller, all prices quoted are exclusive of transportation and insurance costs, duties, and all taxes including federal, state and local sales, excise and value added, goods and services taxes, and any other taxes. Buyer agrees to indemnify and hold Seller harmless for any liability for tax in connection with the sale, as well as the collection or withholding thereof, including penalties and interest thereon. When applicable, transportation and taxes shall appear as separate items on Seller’s invoice.

Payment: Payment may be made by check, money order, credit card, or wire transfer (all fees are borne by the Buyer). Where Seller has extended credit to Buyer, terms of payment shall be net thirty (30) days from date of invoice, without offset or deduction. On any past due invoice, Seller may impose a monthly interest rate. If Buyer fails to make the required payments the Seller will impose the interest rate each month. If Buyer fails to make each payment when it is due, Seller reserves the right to withdraw credit and thereby suspend or cancel performance under any or all purchase orders or agreements in which Seller has extended credit to Buyer. In the event of default by Buyer, Seller shall be entitled to costs, fees, and expenses including but not limited to recovery of attorney fees, court costs and fees, and collections costs.

Standard Terms and Conditions

Delivery and Title: The locations of shipment delivery will be made according to the Seller and Buyer agreement. Title and risk of loss pass to the Buyer upon delivery of the Product to the carrier. Seller's delivery dates are estimates only and Seller is not liable for delays in delivery or for failure to perform due to causes beyond the reasonable control of the Seller, nor shall the carrier be deemed an agent of the Seller. A delayed delivery of any part of an Order does not entitle Buyer to cancel other deliveries. KCA will comply with various federal, state and local laws and regulation concerning occupational health, safety and environment concerns. Buyer has full responsibility to comply with those laws and regulations during the installation and operation of the equipment.

Acceptance / Returns: Shipments will be deemed to have been accepted by Buyer upon delivery of the said shipments to Buyer unless rejected upon receipt. Buyer shall perform all inspections and tests. Buyer deems necessary as promptly as possible but in no event later than 7 days after receipt of Products, at which time Buyer will be deemed to have irrevocably accepted the Products. Any discrepancy in shipment quantity must be reported within 7 days after receipt of Products. Buyer may not return Products without a Return Material Authorization ("RMA") number. RMA's valid for 30 days from the date issued.

Standard Warranty: Buyer will honor Product warranties and indemnities authorized by the manufacturer, including any transferable. 90 days warranty is given for service parts from receipt date. Seller warrants to Buyer that Products purchased hereunder will conform to the applicable manufacturer's specifications for such products and that any value-added work performed by Seller on such Products will conform to applicable Buyer's specifications. If Seller breaches this warranty, Buyer's remedy is limited to (at Seller's election) (1) refund of Buyer's purchase price for such Product (without interest), (2) repair of such Products, or (3) replacement of such Products provided that such Products must be returned to Seller, along with acceptable evidence of purchase within 13 days from date of delivery, transportation charges prepaid. No warranty will apply if the Product has been subject to misuse, neglect, accident or modification.

Limitation of Liabilities: Buyer shall not be entitled to, and Seller shall not be liable for, loss of profit or revenue, promotional or manufacturing expenses, overheads expenses, business interruption cost, loss of data, removal or reinstallation costs, injury to reputation of buyer, punitive damages, loss of contractor orders or any indirect, special, incidental or consequential damages of any nature. Buyer's recovery from seller for any claim shall not exceed the purchase price paid for the affected products irrespective of the nature of the claim whether in contract, tort, warranty, or otherwise. Buyer will indemnify, defend and hold seller harmless from any claims based on (a) Seller's compliance with buyer's designs, specifications, or instructions, (b) Modification of any products by anyone other than Seller, or (c) use in combination with other products not supplied by seller.

Standard Terms and Conditions

Use of Products: Unless otherwise specified. Products sold by Seller are not designed, intended or authorized for use in life support, life sustaining, nuclear, or other applications in which the failure of such Products could reasonably be expected to result in personal injury, loss of life or catastrophic property damage. If buyer uses or sales the Products for use in any such applications: (1) Buyer acknowledges that such use or sale is at Buyer's sole risk; (2) Buyer agrees that Seller and the manufacturer of the Products are not liable, in whole or in part, for any claim or damage arising from such use; and (3) Buyer agrees to indemnify, defend and hold Seller and the manufacturer of the Products harmless from and against any and all claims, damages, losses, costs, expenses and liabilities arising out of or in connection with such use or sale.

Force Majeure: Seller is not liable for failure to fulfill its obligations for any accepted Order or for delays in delivery due to causes beyond Seller's reasonable control including, but not limited to, acts of God, natural or artificial disaster, riot, war, strike, delay by carrier, shortage of Product, acts or omissions of other parties, acts or omissions of civil or military authority, Government priorities, changes in law, material shortages, fire, strikes, floods, epidemics, quarantine restrictions, acts of terrorism, delays in transportation or inability to obtain labor, materials or products through its regular sources, which shall be considered as an event of force majeure excusing Seller from performance and barring remedies for non-performance. In an event of force majeure condition, the Seller's time for performance shall be extended for a period equal to the time lost as a consequence of the force majeure condition without subjecting Seller to any liability or penalty. Seller may, at its option, cancel the remaining performance, without any liability or penalty, by giving notice of such cancellation to the Buyer.

General: (a) Seller will comply with state law for any dispute from buyer. (b) Buyer may not assign this Agreement without the prior written consent of Seller. Seller or its affiliates may perform the obligations under this Agreement. This Agreement is binding on successor and assigns, (c) Products, including software or other intellectual property, are subject to any applicable rights of third parties, such as patents, copyrights and/or user licenses.

Appendix

(If your machine is standard, this page is blank.)

Contact Information

Kaishan Compressor, LLC.,
Add.: 7650-A Stanton St., Daphne, AL, Post code: 36526
Office number: +1 251-202-0577
www.KaishanUSA.com