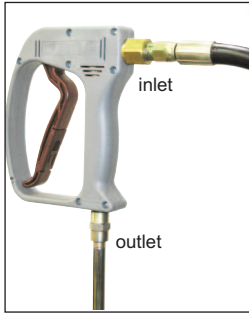


**GENERAL PUMP** *A member of the Interpump Group*

# DCG5010HE

## Compensating Spray Gun for Hydro Excavation

**SPECIFICATIONS**

|                      |                                           |            |
|----------------------|-------------------------------------------|------------|
| Part Number:         | DCG5010HE                                 |            |
| Maximum Volume:      | 10.5 GPM                                  |            |
| Maximum Pressure:    | 5000 PSI                                  |            |
| Maximum Temperature: | 320° F                                    |            |
| Port Sizes:          | Inlet                                     | 3/8" NPT-F |
|                      | Outlet                                    | 1/4" NPT-F |
| Dimensions:          | 8.1" x 6.3" x 1.2"                        |            |
| Weight:              | 1.4 lbs.                                  |            |
| Material:            | Brass, Stainless Steel,<br>Plastic, Viton |            |
| <b>REPAIR KIT</b>    | <b>2100249</b>                            |            |

**FEATURES**

- Specifically designed for use in hydro excavation!
- Exclusive patented GP design
- Unique design compensates for changes in pressure
- Trigger designed for low fatigue
- Allows for continued use without tiring hand
- All flow passages designed for minimum pressure drop - maximum flow
- Fluorocarbon seals for maximum high temperature performance
- Large comfortable hand grip to accommodate work gloves
- Additional venting for excellent high temperature performance
- Durable glass-filled housing and trigger in Zytel (high tech nylon)



General Pump  
is a member of  
the Interpump Group



Ref 300990 Rev A  
02-16

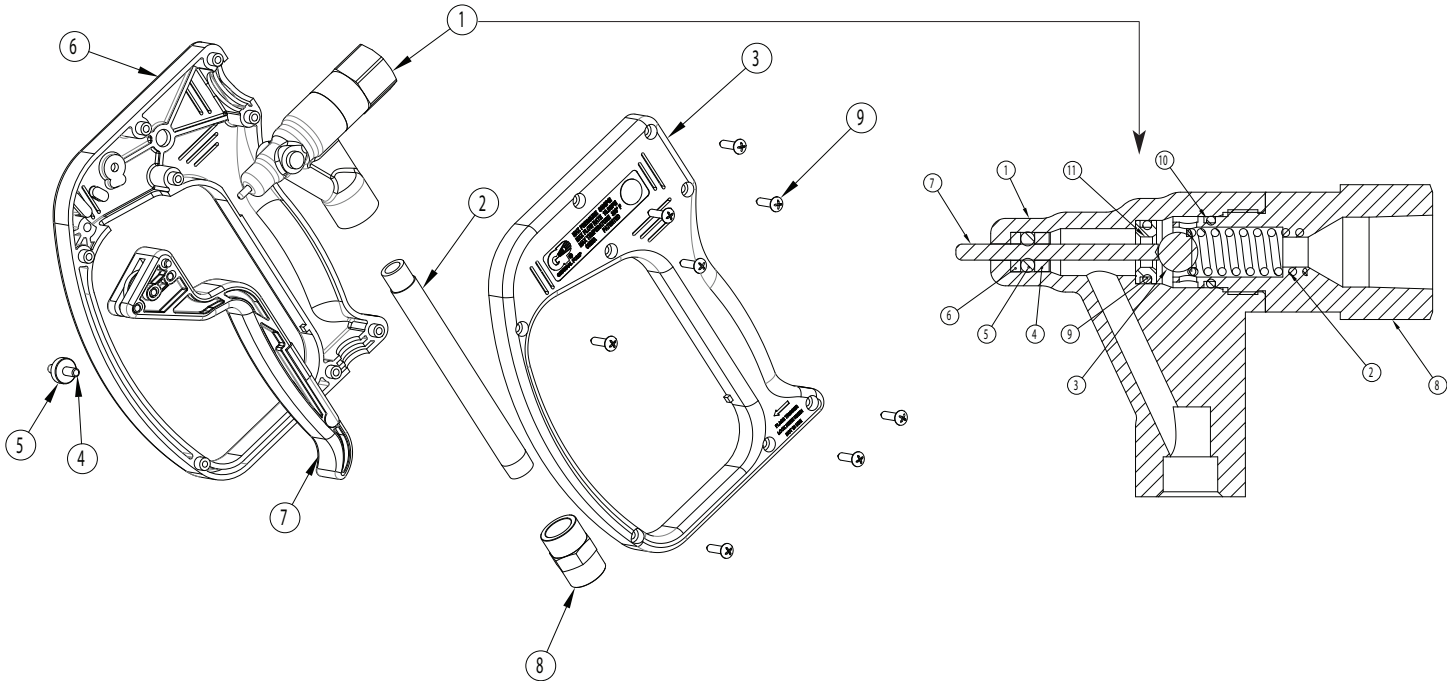


# DCG5010HE

## Compensating Spray Gun

**GENERAL PUMP** *A member of the Interpump Group*

### PARTS LIST



### PARTS LIST FOR 2103290

| Item      | Part No. | Description         | Qty. |
|-----------|----------|---------------------|------|
| 1         | 2103290  | ASSY, SUB, FORGING  | 1    |
| 2         | 2550201  | TUBE, INLET, GUN    | 1    |
| 3         | 2660323  | HOUSING, GUN, LEFT  | 1    |
| 4         | 2510157  | PIN, TRIGGER        | 1    |
| 5         | 2520087  | ROLLER              | 1    |
| 6         | 2660322  | HOUSING, GUN, RIGHT | 1    |
| 7         | 2103255  | ASSY, TRIGGER       | 1    |
| 8         | 2520060  | UNION               | 1    |
| 9         | 2200065  | SCREW               | 8    |
| 1         | 2452024  | FORGING             | 1    |
| 2*        | 2720001  | SPRING              | 1    |
| 3*        | 2520004  | BALL                | 1    |
| 4*        | 2510004  | WASHER, BRASS       | 1    |
| 5*        | 2701048  | O-RING              | 1    |
| 6*        | 2710018  | WASHER, TEFLON      | 1    |
| 7*        | 2520084  | PIN, FORGING        | 1    |
| 8         | 2510251  | PLUG, GUN           | 1    |
| 9*        | 2701002  | O-RING              | 1    |
| 10*       | 2701049  | O-RING              | 1    |
| 11*       | 2520085  | SEAT, GUN           | 1    |
| * 2100249 |          | REPAIR KIT          |      |

Item Part No. Description Qty.

#### \* Repair Kit 2100249



Ref 300990 Rev A  
02-16

**GENERAL PUMP** • 1174 Northland Drive • Mendota Heights, MN 55120  
Phone: 651.686.2199 • Fax: 800.535.1745 • email: sales@gpcompanies.com • www.generalpump.com

