

15 - 25 TONS PACKAGED GAS / ELECTRIC UNITS

15 Tons Cooling Capacity: 180,000 BTU/h

20 Tons Cooling Capacity: 240,000 BTU/h

25 Tons Cooling Capacity: 290,000 BTU/h

15 Tons Heating Capacity: 350,000 BTU/h

20 Tons Heating Capacity: 400,000 BTU/h

25 Tons Heating Capacity: 400,000 BTU/h

SUBMITTAL DATA FORM

Job Name _____

Location _____

Purchaser _____

Order No. _____

Engineer _____

Unit No. _____

Model No. _____

Unit Designation _____

Performance Data Certified By: _____

Standard Features

- Patented tubular heat exchanger
- High-efficiency scroll compressor
- Aluminum micro-channel indoor coil on 25-ton units
- 25-ton units contain two outdoor fans
- Copper tube / aluminum fin coils
- High- and low-pressure switches
- High-capacity, steel-cased filter drier
- 24-volt terminal strip
- Contactor with lugs
- Units meet the performance outlined in Table 6.8.1-1 of ASHRAE Standard 90.1-2013
- AHRI Certified; ETL Listed



Cabinet Features

- Heavy-gauge, galvanized-steel cabinet with UV-resistant powder-paint finish
- Condenser hail guards
- Full perimeter rail
- Built-in filter rack with standard 2" filters (convertible to 4" filters)
- Sloped drain pan



* Complete warranty details available from your local dealer or at www.daikincomfort.com.

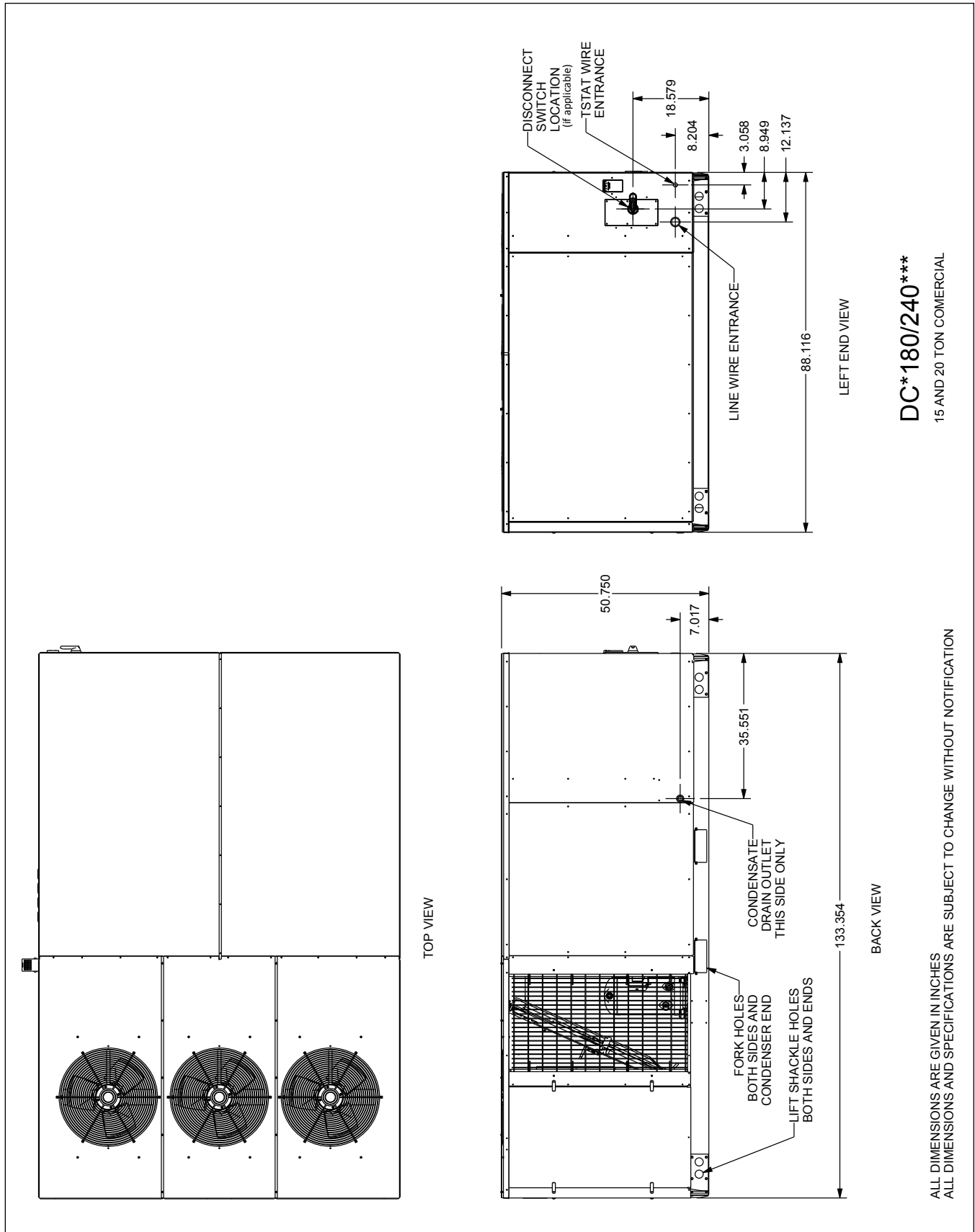
PERFORMANCE DATA

Cooling Performance		
Tota Capacity	_____	MBH
Sensible Capacity	_____	MBH
Outdoor Design TMP	_____	°F DB / WB
Air Temp entering		
Evaporator Coil	_____	°F
Power Input Required (less blower motor)	_____	kW
Heating Performance		
Total Heating Capacity	_____	kW
	_____	BTU/h

Supply Air Blower Performance		
Total Supply Air	_____	CFM
Ext. Static Pressure	_____	IWG
Blower Speed	_____	RPM
Power Output Required	_____	BHP
Motor Ratings	_____	HP
Power Input Required	_____	kW
Electrical Data		
Power Supply	_____	
Total Unit Amps	_____	Amps
Max Overcurrent Device:		
Fuse	_____	Breaker _____ Amps _____

NOTES

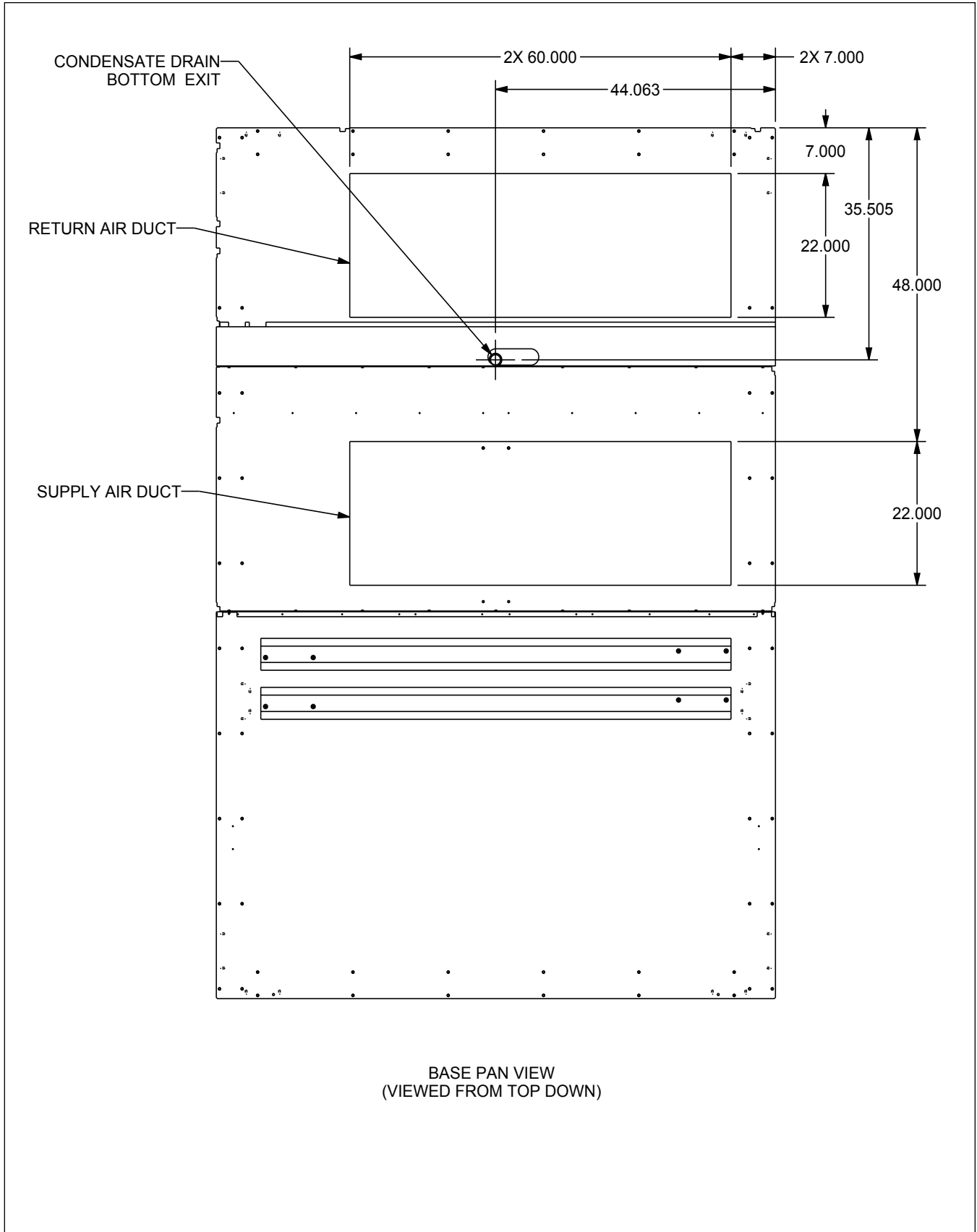
DIMENSIONS — 15 & 20 TONS



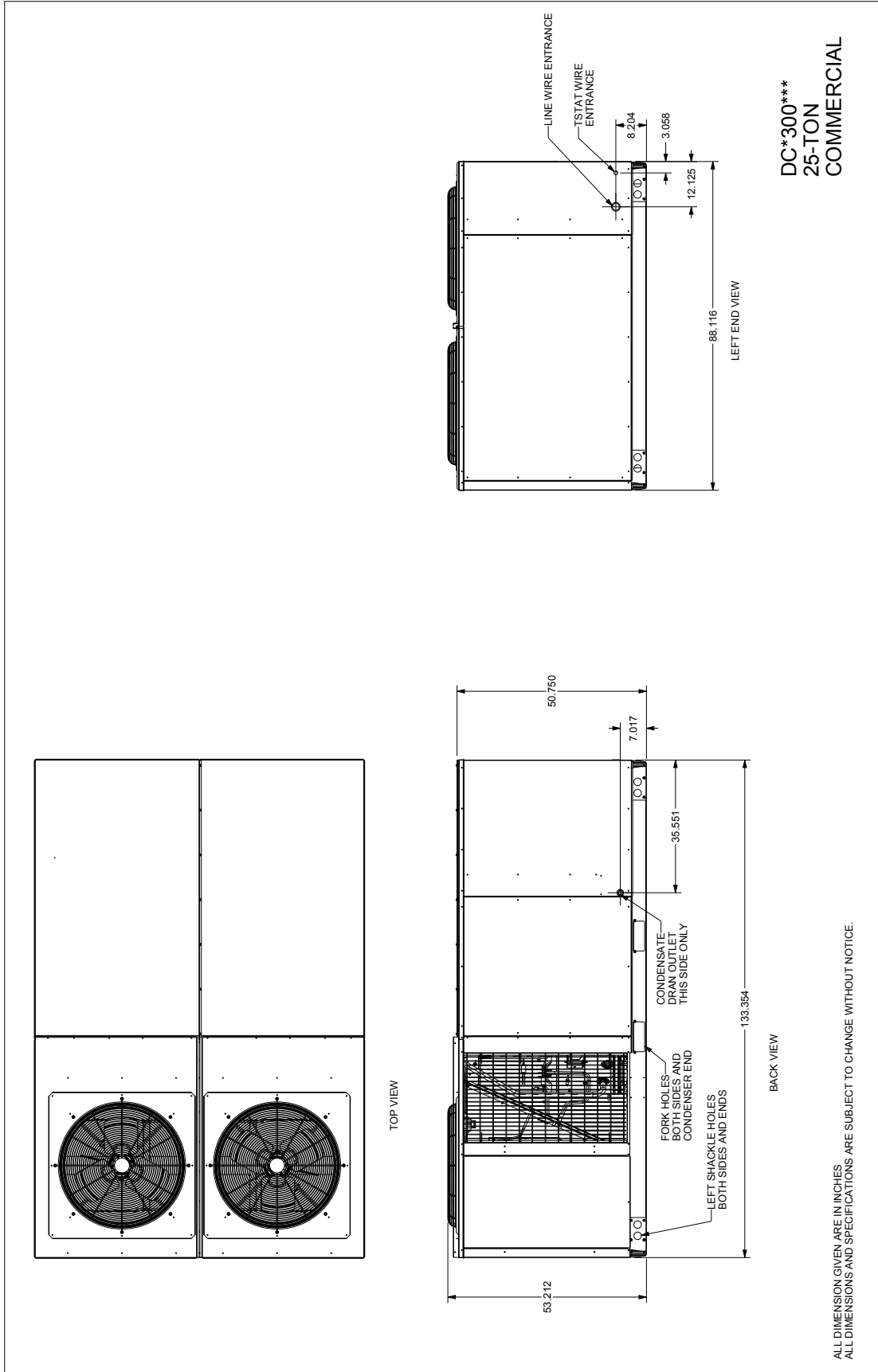
DC*180/240***
15 AND 20 TON COMMERCIAL

ALL DIMENSIONS ARE GIVEN IN INCHES
ALL DIMENSIONS AND SPECIFICATIONS ARE SUBJECT TO CHANGE WITHOUT NOTIFICATION

DIMENSIONS — 15, 20, & 25 TONS



DIMENSIONS — 25 TONS



ALL DIMENSION GIVEN ARE IN INCHES
ALL DIMENSIONS AND SPECIFICATIONS ARE SUBJECT TO CHANGE WITHOUT NOTICE.

ACCESSORIES LIST

DAIKIN MASTER ITEM #	DESCRIPTION	FITS MODEL SIZES	FIELD-INSTALLED	FACTORY-INSTALLED	√
	Curb				
14CURB180300	14" Roof Curb	15-25 tons	√		
18CURB180300	18" Roof Curb	15-25 tons	√		
24CURB180300	24" Roof Curb	15-25 tons	√		
GHRC-180300	Hurricane Restraint Clips	15-25 tons	√		
	Ultra Low-Leak Economizer & Power Exhaust¹				
10-365-11C	Ultra Low-Leak Downflow Economizer w/ Dry Bulb	15-25 tons	√		
10-366-11C	Ultra Low-Leak Downflow Economizer w/ Enthalpy	15-25 tons	√	√	
10-455-11-23	Centrifugal Power Exhaust 230v	15-25 tons	√		
10-455-11-33	Centrifugal Power Exhaust 460v	15-25 tons	√		
10-455-11-43	Centrifugal Power Exhaust 575v	15-25 tons	√		
10-457-11xA-23	Modulating Power Exhaust 230v	15-25 tons	√		
10-457-11xA-33	Modulating Power Exhaust 460v	15-25 tons	√		
10-465-11-21	Prop Power Exhaust 230v	15-25 tons	√		
10-465-11-31	Prop Power Exhaust 460v	15-25 tons	√		
10-465-11-41	Prop Power Exhaust 575v	15-25 tons	√		
	Low-Leak Economizer & Power Exhaust²				
DDNECNJ180300B	Low-Leak Downflow Economizer	15-25 tons	√	√	
DPE1803002	Downflow Power Exhaust (208/230v)	15-25 tons	√		
DPE1803004	Downflow Power Exhaust (460v)	15-25 tons	√		
DPE1803007	Downflow Power Exhaust (575v)	15-25 tons	√		
DHZECNJ180300	Horizontal Economizer	15-25 tons	√		
	Downflow Accessories				
D25FD180300	25% Manual Fresh Air Damper	15-25 tons	√		
D25MFD180300	25% Motorized Fresh Air Damper	15-25 tons	√		
D50MFD180300	50% Motorized Fresh Air Damper	15-25 tons	√		
DDNBB180300	Burglar Bar Sleeves with Supply and Return	15-25 tons	√		
	Horizontal Accessories				
HZCURB180300EDR	Horizontal Curb End Discharge Roofed In	15-25 tons	√		
HZCURB180300NSR	Horizontal Curb Non-Service Side Discharge Roofed In	15-25 tons	√		
HZCURB180300SSR	Horizontal Curb Service Side Discharge Roofed In	15-25 tons	√		
HZCURB180300EDS	Horizontal Curb End Discharge Slab Mount	15-25 tons	√		
HZCURB180300NSS	Horizontal Curb Non-Service Side Discharge Slab Mount	15-25 tons	√		
HZCURB180300SSS	Horizontal Curb Service Side Discharge Slab Mount	15-25 tons	√		
DHZE25FD180300	Horizontal Fresh Air Damper 25%	15-25 tons	√		
DHZRETPNL180300	Horizontal Return Panel	15-25 tons	√		
	Concentrics				
CDK180	Concentric Duct Kit	15 tons	√		
CDK240	Concentric Duct Kit	20 tons	√		
CDK300	Concentric Duct Kit Flush Mount Diffuser	25 tons	√		
	DDC Accessories³				
	DDC communicating controller (built-in BACnet® MS/TP) includes Standard Room Sensor to be installed in field	15-25 tons		√	
10366D11B	DDC Ultra Low-Leak Downflow Economizer	15-25 tons	√	√	

ACCESSORIES LIST (CONT.)

DAIKIN MASTER ITEM #	DESCRIPTION	FITS MODEL SIZES	FIELD-INSTALLED	FACTORY-INSTALLED	√
10465DDC	Power Exhaust kit used with DDC Ultra Low-Leak Economizer	15-25 tons	√		
DLAKT03	Low-Ambient	15-20 tons	√	√	
LONKT01	LonWorks® card	15-25 tons	√		
3PMK01	Phase Monitor (3-Phase Only)	15-25 tons	√	√	
DFSKT02	Dirty Filter Switch	15-25 tons	√		
	High-Static Kits⁴				
HSKT180G	High-Static Kit (230/460v)	15 tons	√	√	
HSKT180G-7	High-Static Kit (575v)	15 tons	√	√	
HSKT240	High-Static Kit (230/460v)	20 tons	√	√	
HSKT240-7	High-Static Kit (575v)	20 tons	√	√	
HSKT300G	High-Static Kit (all voltages)	25 tons	√	√	
	Crankcase Heater Kits				
0130L00017S	70W 230V	15-20 tons	√		
0130L00018S	70W 460V	15-20 tons	√		
0130L00019S	70W 575V	15-20 tons	√		
0130L00020S	90W 230V	25 tons	√		
0130L00021S	90W 460V	25 tons	√		
0130L00022S	90W 575V	25 tons	√		
	High Efficiency Filters				
0160L00202	High Efficiency MERV 13 Air Filter Nom. Size: 20x25x2; (Order Qty 6)	15, 20 tons	√		
0160L00201	High Efficiency MERV 13 Air Filter Nom. Size: 20x20x2; (Order Qty 8)	25 tons	√		
	Misc Accessories				
	Convenience Outlet: Powered	15-25 tons		√	
	Convenience Outlet: Non Powered	15-25 tons		√	
	Disconnect Switch (non-fused)	15-25 tons		√	
LAKT23	Low-Ambient Kit, 208-230V - non-DDC	15-20 tons	√	√	
LAKT24	Low-Ambient Kit, 460V - non-DDC	15-20 tons	√	√	
LAKT25	Low-Ambient Kit, 575V - non-DDC	15-20 tons	√	√	
LAKT05	Low-Ambient Kit (all voltages) - non-DDC	25 tons	√	√	
LPKT180300A	LP Conversion Kit	15-25 tons	√		
3PMNDK01	Phase Monitor - non-DDC	15-25 tons	√	√	
	Smoke Detector (supply and/or return air)	15-25 tons		√	
	Hinged Panels	15-25 tons		√	
FSKT02A	Freeze Stat Kit5	25 tons	√		
HAKT36300	High-Altitude Kit	15-25 tons	√		
LPKT180300A	LP Conversion Kit	15-25 tons	√		
220-GX-003	Flue Extension Kit	15-25 tons	√		

¹ Use Economizer & Power Exhaust listed within Ultra Low-Leak section

² Use Economizer & Power Exhaust listed within Low-Leak section

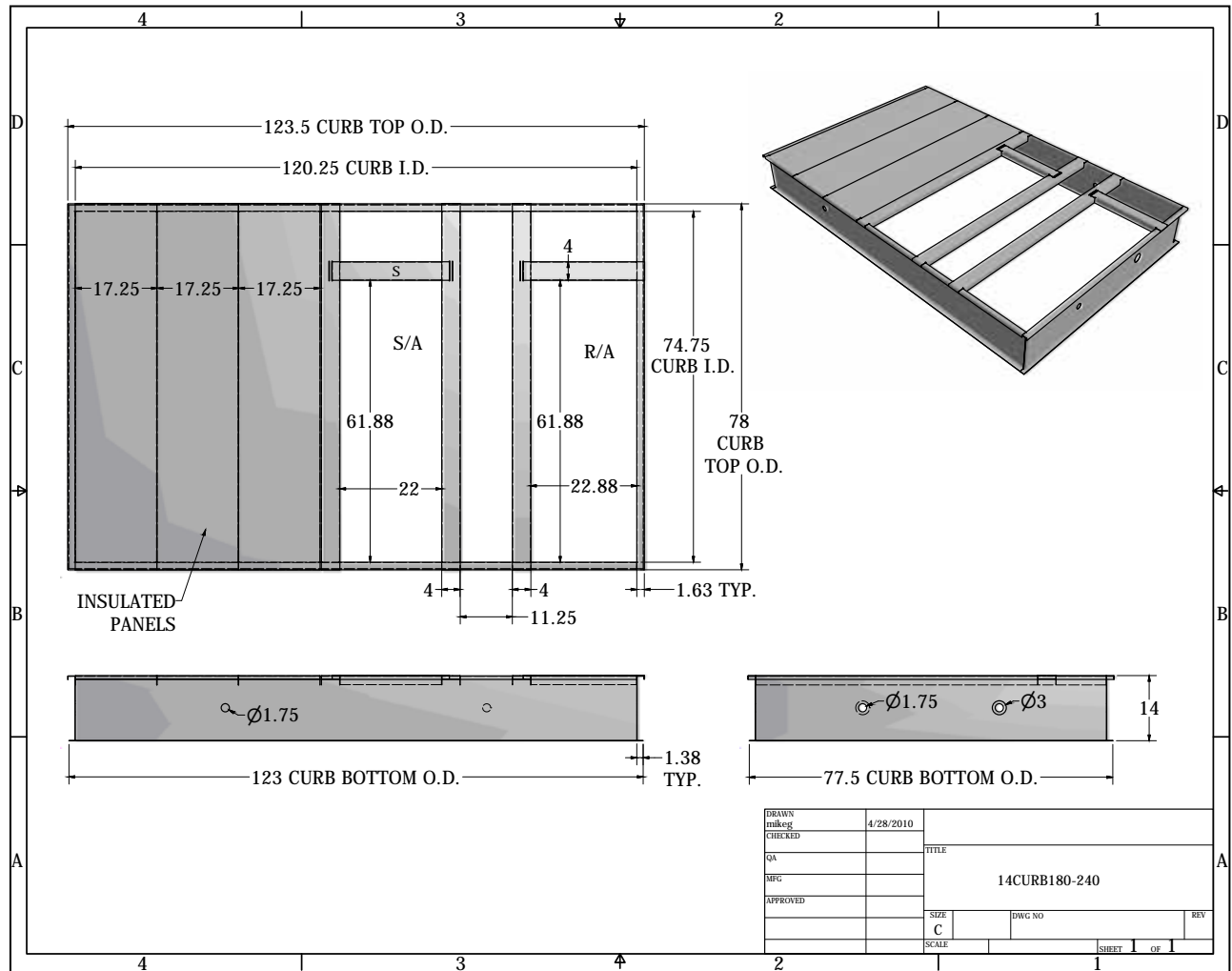
³ For a full list of DDC accessories, please refer to DDC Controller Technical Guide manual (DK-DDC-TGD-01B)

⁴ HSKT High-Static Kits are for use with standard single-speed belt-drive units only.

⁵ FSK02A is standard on 2 speed, V, models, and field installed for single speed, B, models.

Note: Where multiple variations are available, the heaviest combination is listed.

ROOF CURB — #14CRB180300



SPECIFICATIONS

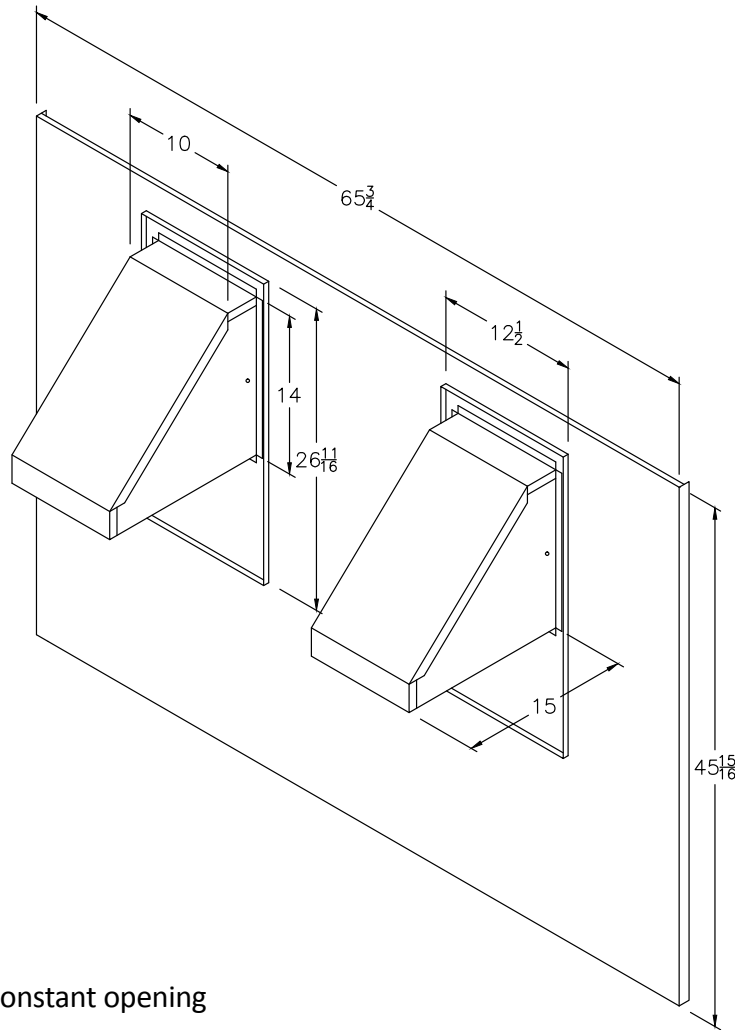
- 14-Gauge Construction
- 1 x 4 Wood Nailer attached to top of the curb
- Shipped knocked down with all hardware
- Gasket included
- Bed-Rail style corners

Note: outside duct dimension should be 1/2" less than opening dimensions above.

DRAWN	mikeg	4/28/2010	TITLE	
CHECKED			14CURB180-240	
QA			SIZE	DWG NO
MFG			C	
APPROVED			SCALE	REV
			SHEET	1 OF 1

MANUAL FRESH AIR DAMPER — #D25MFD180300

MOTORIZED FRESH AIR DAMPER — #D25MFD180300



SPECIFICATIONS

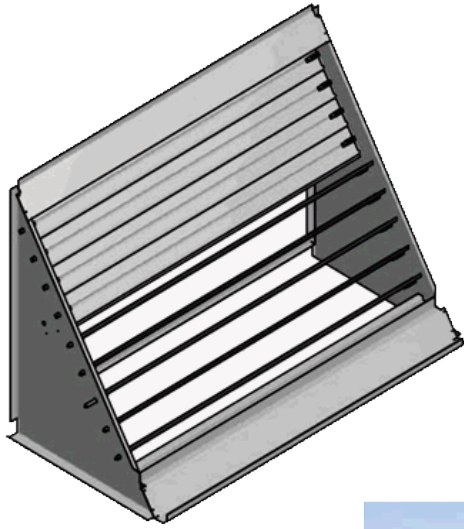
Manual Damper

- Provides up to 25% fresh air
- Locking selection knob provides constant opening
- Painted to match the unit
- Fits 15 - 25 ton package units in all fuels

Motorized Damper

- 24 VAC Damper motor with spring return
- Fully assembled and factory wired
- Painted to match the unit
- Fits 15 - 25 ton package units in all fuels

DOWNFLOW ECONOMIZER — #DDNECNJ1803000B



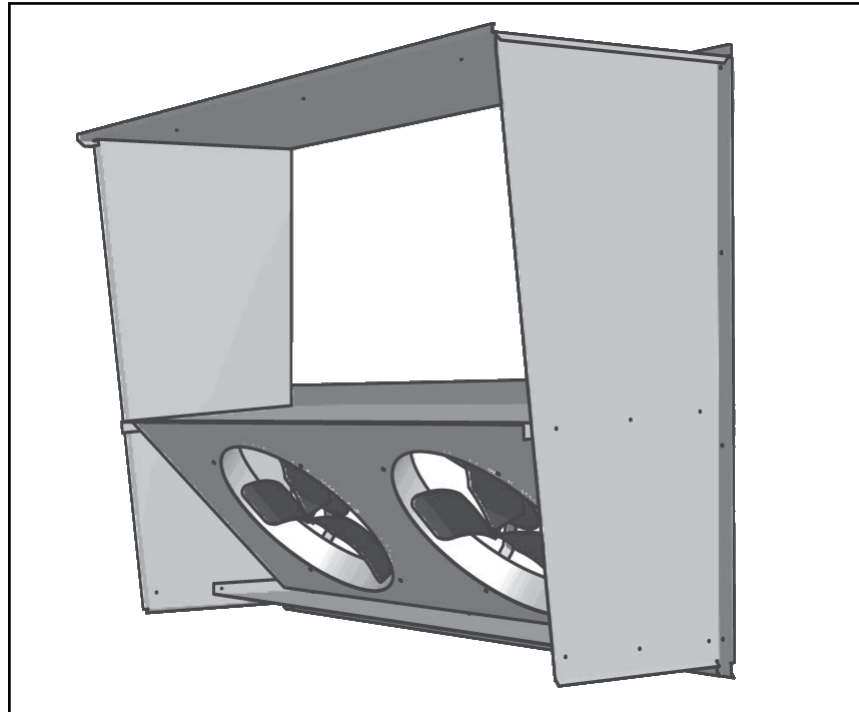
SPECIFICATIONS

- Fully modulating
- Up to 100% fresh air
- Integral barometric relief
- Hoods painted to match unit
- Honeywell economizer control
- Single adjustable enthalpy control convertible to dual enthalpy
- Adjustable minimum fresh air
- Factory wired
- Gas/Electric for 15 - 25 ton units

POWER EXHAUST FOR 208/230V UNITS — #DPE1803002

POWER EXHAUST FOR 460V UNITS — #DPE1803004

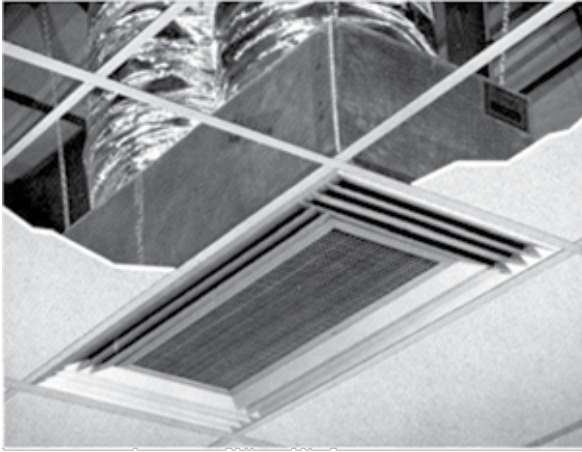
POWER EXHAUST FOR 575V UNITS - #DPE1803007



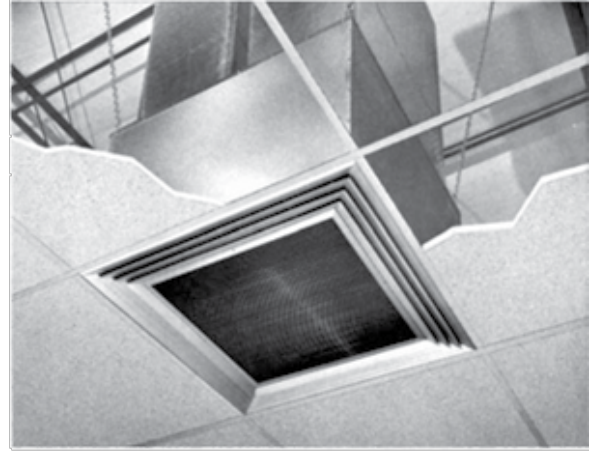
SPECIFICATIONS

- Features propeller-type fans
- 208/230V and 460V models available
- Used in conjunction with DNECONHP150 or DNECONGS180240
- Fans engage when economizer fresh-air dampers are 70% open
- Gives up to 100% relief
- Integrates into downflow economizer hood

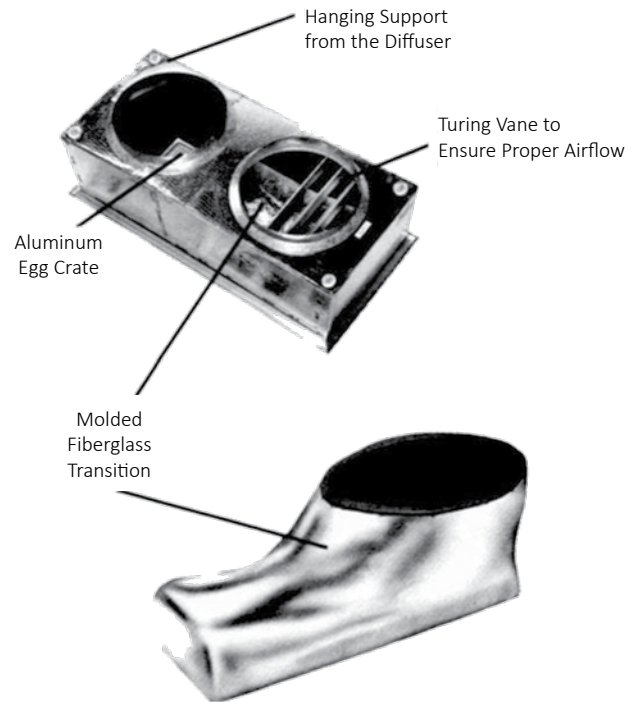
CONCENTRIC DUCT KITS — #CDK180, #CDK240 & #CDK300



Light Commercial
T-Bar Ceiling



Commercial
T-Bar Ceiling



SPECIFICATIONS

- All-aluminum diffuser with aluminum return air egg crate
- Built-in anti-sweat gasket
- Molded fiberglass transition (through five tons)
- Built-in hanging supports
- Diffuser box constructed of fiberglass duct board (through 7½ tons) or sheet metal