



**PHANTOM<sup>®</sup>**  
**COMBI II**

**Gas Fired, Stainless  
Steel, Combi Boiler**



*Introducing*

**Phantom  
Adaptive  
Technology**

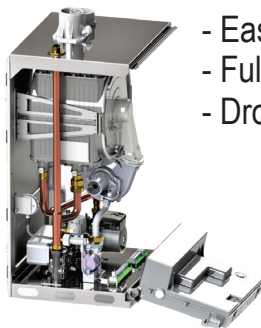
### **Adaptive Combustion Technology Features**

- Field Convertible to LP – No conversion kit required
- Simple start up
- Rate based temperature reset – no outdoor sensor required

### **STANDARD FEATURES INCLUDE**

- **95% AFUE with 10:1 Turndown**
- **Heat Input**
  - 13.6-120 MBH Input
- **Domestic Hot Water**
  - 136 MBH Input
  - Up to 3.7 GPM
  - Selectable economy or comfort – recirculation mode
- **Low Loss Header Included**

- **2" venting standard**
- **5-year parts warranty**
- **Serviceability**



- Easy access to key components
- Fully removable front & side panels
- Drop down control center

**Quality  
Value &  
Service**

# PHANTOM COMBI II

## TECHNICAL SPECIFICATIONS

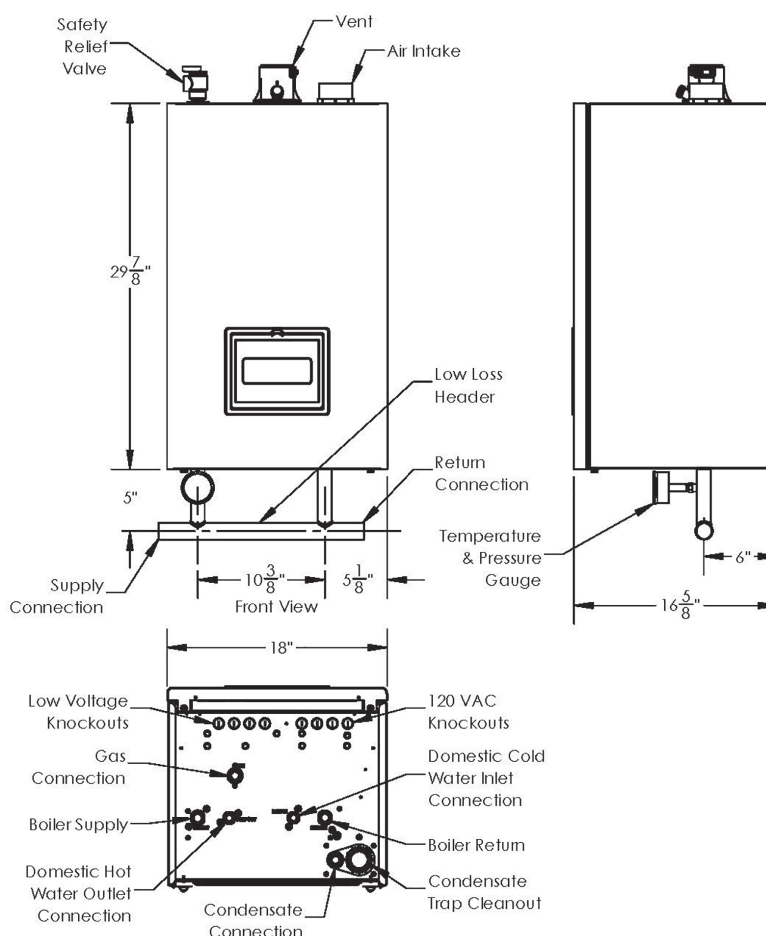
Connection Sizes (in)	
Supply/Return	1-1/4" Sweat
DHW	3/4" Sweat
Gas	1/2" NPT
Vent	2" STD (3" w/increaser)

### STANDARD EQUIPMENT


- Stainless steel heat exchanger
- Adaptive Combustion System
  - Burner-Blower-Gas Valve & Venturi assembly
  - Large key control pad with local user display
  - Built-in self-diagnostics
  - Rate based outdoor reset (no sensor required)
- DHW Combi Block with
  - Plate heat exchanger
  - Boiler circulator
  - DHW flow and boiler return temperature sensors
  - 3-way valve
  - Automatic air vent

### OPTIONAL EQUIPMENT

- CPVC/PVC vent kit
  - 2" Vent Kit (P/N 107039-01)
  - 3" Vent Kit (P/N 107039-02)



### Ratings

Space Heating Ratings								Domestic Hot Water (DHW) Ratings <sup>1</sup>					Shipping Weight  (lbs)
Model	Input <sup>2</sup> (MBH)		DOE Heating Capacity (MBH)	AHRI Net Rating <sup>3</sup> (MBH)	AFUE	Input <sup>2</sup> (MBH)		Hot Water Draw Limits GPM					
	Min	Max				Min	Max	Max			Min <sup>4</sup>		
								70°F Rise	77°F Rise	90°F Rise			
PHTM2136C	13.6	120	112	97	95.0	13.6	136	3.7	3.4	2.9	0.5	112	

<sup>1</sup> DHW ratings are not AHRI certified.

<sup>2</sup> Input and DHW draw limits for elevations up to 2,000 ft. with min vent length. See Installation Manual for derate at max vent length.

<sup>3</sup> Net AHRI Water Ratings shown are based on a piping and pickup allowance of 1.15. The manufacturer should be consulted before selecting a boiler for installations having unusual piping and pickup requirements, such as intermittent operation, extensive piping systems, etc.

<sup>4</sup> Min DHW flow rate required through boiler to initiate DHW demand. Higher flow rate through fixture may be required due to mixing at tempering valve and/or fixture itself.

<sup>5</sup> Not for installation at altitudes above 2,000 feet.

