



# Owner's Manual

Model Numbers:

**THV-200**

**VACUUM ATTACHMENT**

P/N 30224

Date 04-25-01

THV-200



*Supplier To The Outdoor Power Equipment Industry*

ISM, Inc. • 1028 4<sup>th</sup> Street SW • Auburn, WA 98001 • Phone: (253) 333-1200 • Fax: (253) 333-1212

## 1. Introduction

This vacuum attachment has been designed for TANAKA hand-held blowers.

By replacing some blower parts with this attachment, your TANAKA hand-held blower turns out to be a handy vacuum cleaner.

### ⚠ WARNING!

It is important that you read and understand your TANAKA power blower owner's manual as well as this manual. Please carefully review and observe all safety precautions and warnings. Careless or improper use of the unit may cause serious or fatal injuries.

### SAFE OPERATION

- IMPORTANT: A dust filter mask should be worn during operation.
- Always wear a safety face shield or goggles.
- Always wear heavy, long pants, boots and gloves. Do not wear loose clothing, jewelry, short pants, sandals or go barefoot.
- Secure hair so it is above shoulder length.
- Do not operate that tool when you are tired, ill or under the influence of alcohol, drugs or medication.
- Never let a child or inexperienced person operate the machine.
- Wear hearing protection.

### ⚠ WARNING!

- Do not vacuum anything that is burning or smoking, such as cigarettes, matches, or hot ashes.
- Do not vacuum fireplace soot or ash. This is a very fine dust which will disturb air stream in the bag and may cause damage.

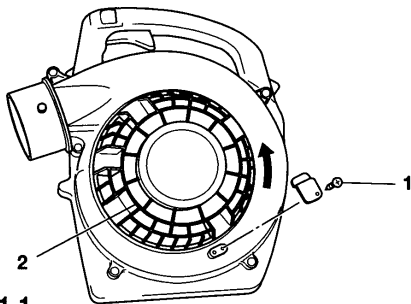


Fig.1-1

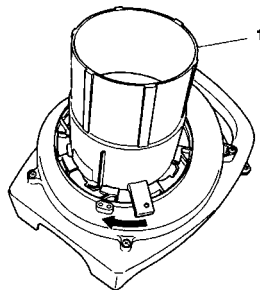


Fig.1-2

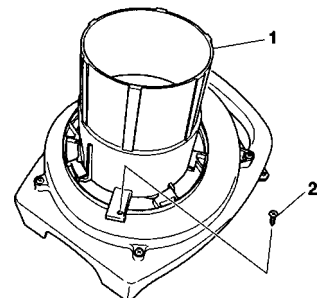


Fig.1-3

## 2. Assembly procedures

### ⚠ WARNING!

Make sure the engine is turned off/stopped and not hot before assembly.

### Installation of vacuum pipes

- Remove tapping screw (1). ( Fig. 1 -1)
- Turn dust cover (2) counterclockwise and remove it. (Fig. 1 -1)
- Install vacuum pipe (1) in place of dust cover by turning the pipe counter-clockwise until it clicks. (Fig. 1 -2)
- Secure vacuum pipe (1) with the tapping screw which was removed at first step. (Fig. 1 -3)

### NOTE!

Do not tighten the tapping screw too much as plastic threads are fragile.  
Connect straight pipe (2) and suction pipe (1) by inserting.( See what is what)

## Installation of handle (Fig.2-1,2-2)

### NOTE!

Be careful not to drop a screw into the unit when assembling.

- Remove four screws (1) securing recoil starter.
- Install handle over the recoil starter while making sure the recoil starter engages by pulling starter handle slightly.
- Secure the handle with the four longer screws which come with the handle.

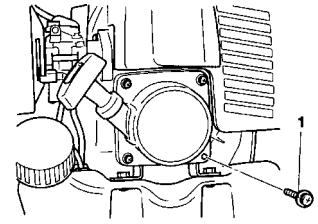


Fig.2-1

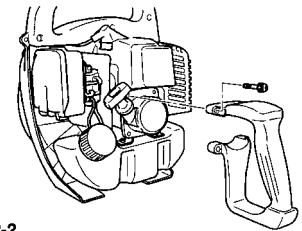


Fig.2-2

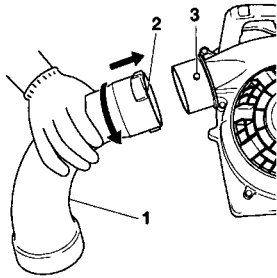


Fig.3-1

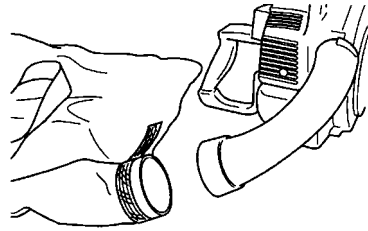


Fig.3-2

## Installation of bent pipe and collector bag.

- Connect bent pipe (1). Align groove (2) in bent pipe with projection (3) on blower housing and slide the pipe onto the blower housing.
- Rotate the pipe clockwise to lock it into place. (Fig.3-1)
- Connect collector bag with the installed bent pipe by inserting opening of the bag onto thinner part of the pipe, then tape with the sawn strap securely. (Fig.3-2)

## 3. Vacuuming techniques

### ⚠ WARNING!

Do not vacuum bottles, cans or any other hard materials, which may cause damage or serious injuries.

- Do not use a bag with holes or tears in it. Even a small hole can cause a lot of dust to come out. Repair or replace it immediately.
- Make sure zipper of the bag is completely closed.
- Wear shoulder strap over right or left shoulder. (Fig.4-1)
- Make sure bevel at end of suction pipe faces downward. (Fig.4-1)
- The unit should be operated in a well ventilated area.
- Use rakes and brooms to loosen debris before vacuuming.
- A low speed should be used to vacuum small leaves and dry grass.
- A medium speed should be used to vacuum large leaves and grass.
- A high speed should be used to vacuum larger or wet leaves and grass.
- Dispose of debris in the bag more frequently in dusty condition.



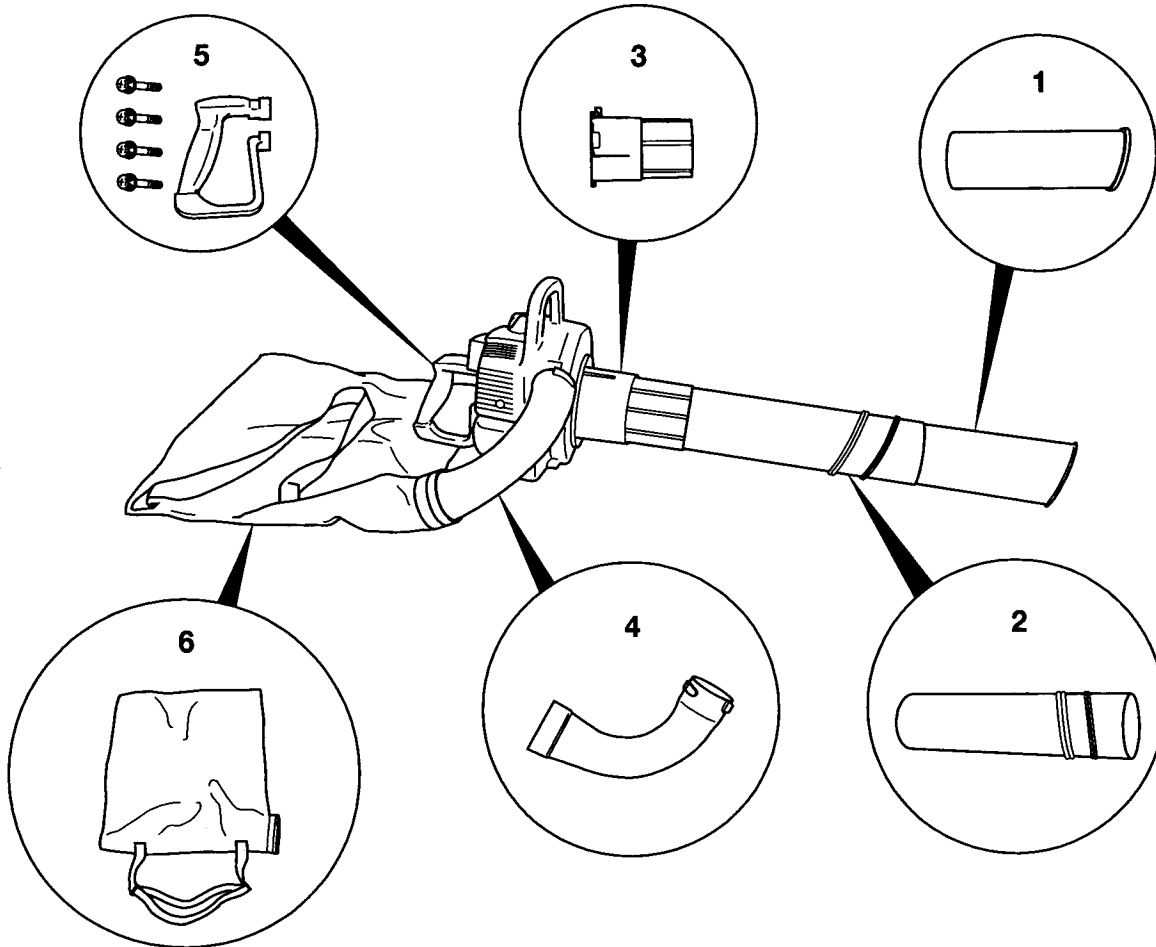
Fig.4-1

### NOTE!

When you hear or feel strange sounds or vibrations, stop engine immediately and check if anything blocks fans or pipes. If so, remove it and check for damage.'

**4. Stopping**

Decrease engine speed and run at an idle for a few minutes, then turn off ignition switch.



**5. What is what and contents**

1. Suction Pipe
2. Straight Pipe
3. Vacuum pipe
4. Bent pipe
5. Handle/screws 4x28 ps
6. Collector bag