

Please carefully read and save these instructions before attempting to assemble, maintain, install, or operate this product. Observe all safety information to protect yourself and others. Failure to observe the instructions may result in property damage and/or personal injury. Please keep instructions for future reference.

## Important Operating Instructions



# GENERAL PURPOSE SPRAY GUN

**Model: 9409**

### CALIFORNIA PROPOSITION 65

**WARNING:** You can create dust when you cut, sand, drill or grind materials such as wood, paint, metal, concrete, cement, or other masonry. This dust often contains chemicals known to cause cancer, birth defects, or other reproductive harm. Wear protective gear.

**WARNING:** This product or its power cord may contain chemicals, including lead, known to the State of California to cause cancer and birth defects or other reproductive harm. Wash hands after handling.

### Important!

When using equipment, a few safety precautions must be observed to avoid injuries and damage. Please read the complete operating manual with due care. Keep this manual in a safe place, so that the information is available at all times. If you give the equipment to any other person, give them these operating instructions as well. We accept no liability for damage or

accidents which arise due to non-observance of these instructions and the safety information herein.

### SPECIFICATIONS

**Standard Nozzle:** 2.0mm  
**Avg. Air Consumption:** 7 CFM  
**Air Pressure:** 50-90 PSI  
**Pattern Width:** 9 inch  
**Paint Capacity:** 32 oz.

**CAUTION:**  
**FOR YOUR OWN SAFETY,**  
**READ INSTRUCTION MANUAL**  
**COMPLETELY AND**  
**CAREFULLY BEFORE**  
**OPERATING THIS GENERAL**  
**PURPOSE SPRAY GUN.**

**Any failures made in following the safety regulations and instructions may result in an electric shock, fire and/or serious injury.**

### SAFETY INSTRUCTIONS

**Keep work area clean and well lit.** Cluttered, dim work areas invite accidents.

**Observe work area conditions.** Do not use the tool in the presence of flames or flammable liquids, gases, or dust.

**Keep children away.** Children must never be allowed in the work area. Do not let them handle machines, tools, extension cords, or air hoses.

**Store idle equipment.** When not in use, the tool should be stored in a safe, dry location out of the reach of children.

**Use the right tool for the job.** Do not attempt to force a tool or attachment to do a job that it was not intended to do. The tool will do the job better and safer at the rate at which it was intended.

**Dress properly.** Do not wear loose clothing or jewelry as they can be caught in moving

For warranty purchases, please keep your dated proof of purchase. File or attach to the manual for safekeeping.

parts. Protective, electrically non-conductive clothes and non-skid footwear are recommended when working. Contain long hair.

**Do not overreach.** Keep proper footing and balance at all times. Do not reach over or across running tools or air hoses.

**Disconnect air hoses and release any built-up pressure.** Never service or disassemble the air sander with the air hose attached. Always release any built-up air even after disconnecting the hose. Disconnect the air sander when not in use.

**Avoid unintentional starting.** Be sure the trigger is in the OFF position before connecting the air supply. Do not carry the tool with your finger on the trigger, whether it is attached to the air source or not.

**Stay alert.** Watch what you are doing and use common sense when operating this tool. Do not use this tool while tired or under the influence of drugs, alcohol, or medication. A moment of inattention while operating this tool increases the risk of injury.

**Use clean, dry, regulated, compressed air at 90 PSI.** Never use oxygen, carbon dioxide, combustible gases, any other bottled gas as a power source for this tool.

**Check for damaged parts.** Before using any tool, any part

that appears damaged should be carefully checked to determine that it will operate properly and perform its intended function. Check for misalignment or binding of moving parts, breakage of parts, and any other condition that may affect the tool's operation. If damaged, have the tool serviced before using. Do not use the tool if the trigger does not operate properly.

**Replacement parts and accessories.** This product is to be serviced by a qualified technician. When servicing, use only identical replacement parts. Only use accessories intended for use with this tool. Use of any other parts will void the warranty.

**Maintenance.** For your safety, this product should be serviced or repaired regularly by a qualified technician.

**Do not operate the spray gun near open flames, pilot lights, heaters, or any other heat source.** Make sure you have adequate ventilation. Most solvents and paints are extremely flammable, especially when sprayed. Never smoke cigarettes in the same room you are working in.

**Paints and solvents may be harmful or fatal if swallowed or inhaled.** Always use a respirator when spraying. Avoid prolonged skin contact with solvents or paints as they will irritate skin. After contact, immediately wash off exposed

area with hot, soapy water.

**Check all spray gun seals and connections.** Before use, make sure the lid is fully tightened on the cup, ensure that the screws and nuts are correctly tightened, and make sure the air hose is securely fastened and does not leak.

#### **WARNING**

Never point the paint gun at yourself or any other person or animal. Solvents and diluting agents can cause burns.

#### **WARNING**

The warnings, cautions, and instructions discussed in this instruction manual cannot possibly cover all conditions and situations that may occur. It must be understood by the operator that common sense and caution are factors that cannot be built into this product, but must be supplied by the operator.

## **OPERATION**

1. Fluid cup, container, and air hose should be connected tightly to the spray gun.
2. Adjust the air pressure according to the viscosity and type of paint. An air pressure between 50 and 90 PSI is recommended.
3. A spraying distance of 10 inches is recommended.

## **ADJUSTMENTS**

The desired pattern, volume of fluid output, and fine

---

atomization can easily be obtained by regulating the pattern adjusting knob and fluid adjusting knob.

1. Adjusting pattern:

- Turn the pattern adjusting knob to the left will make the spray pattern wider.

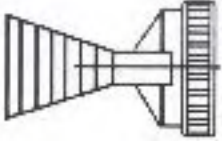




2. Adjusting the volume of fluid output:

- Turning the fluid adjusting knob clockwise will reduce the volume of fluid output, and turning it counterclockwise will increase fluid output.

## **CLEANING AND MAINTENANCE**

- Be extremely careful not to damage the air cap, fluid nozzle, or fluid needle.
- Use the brush with thinner to clean the air cap, fluid nozzle, and other parts. Never immerse the spray gun completely in thinner or solvent.
- Spray thinner to clean out the paint passageway.
- When reassembling, always clean the tool in order to prevent dust from sticking.
- The packing seat should not be tight enough that it interferes with the free movement of the needle, but secure enough to prevent leakage.

## Troubleshooting Guide

Symptom	Possible Cause(s)	Corrective Action
Paint Breaking 	Air gets mixed with paint in the paint passage caused by the needle packing being worn out	Replace O-Ring with a new one or tighten the packing screw
	Loose air cap	Tighten air cap
	Air mixing caused by a loosening of the coupling nut of the paint cup	Tighten the coupling nut
One-sided Pattern 	A portion of square bore of air cap is clogged	Dirt inside the square bore must be cleaned. (Needle or wire must not be used)
	Adhesion of solid dirt at the top of the fluid nozzle	
Crescent Pattern 	A portion of the square bore of the air cap is clogged	Dirt inside the square bore must be cleaned
Narrow Pattern 	Air pressure from the square bore of air cap is critically high	Reduce the air pressure
	Paint viscosity is too thin	Adjust paint viscosity
Thick Pattern 	Clearance between nozzle outside diameter and the center bore of the air cap gets worn wider	Replace the part with a new one
	Air pressure from the square bore of the air cap gets excessively low	Increase air pressure
	Paint viscosity is excessively high	Adjust paint viscosity

---

## **Limited Manufacturer Warranty**

*North American Tool (NAT) Industries makes every effort to ensure that this product meets high quality and durability standards. NAT warrants to the original retail consumer a 1-year limited warranty from the date the product was purchased at retail and each product is free from defects in materials. Warranty does not apply to defects due directly or indirectly to misuse, abuse, negligence, or accidents, repairs or alterations, or a lack of maintenance. NAT shall in no event be liable for death, injuries to persons or property, or for incidental, special, or consequential damages arising from the use of our products. To receive service under warranty, the original manufacturer part must be returned for examination by an authorized service center. Shipping and handling charges may apply. If a defect is found, NAT will either repair or replace the product at its discretion.*

## **DO NOT RETURN TO STORE**

For Customer Service:

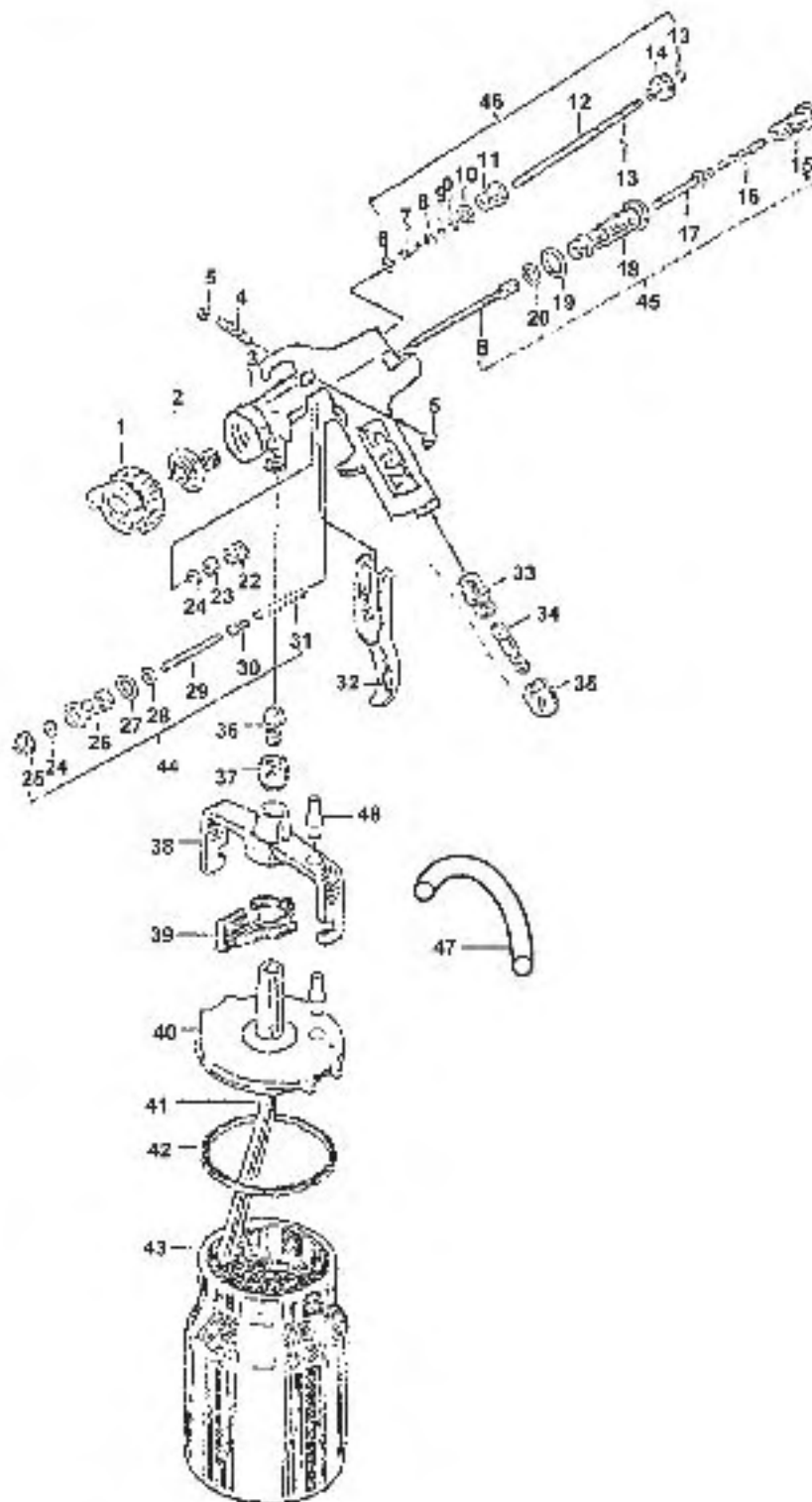
Email: [feedback@natitools.com](mailto:feedback@natitools.com) or Call 1-800-348-5004



# GENERAL PURPOSE SPRAY GUN

Model: 9409

## Parts List



## Call 1-800-348-5004 for assistance or replacement parts

Please provide the following information:

- Model number
- Part description and number as shown in parts list
- Serial number (if any)

Address any correspondence to:

North American Tool Industries  
 84 Commercial Rd  
 Huntington, IN 46750

No.	Description
1	Air Cap Set
2	Fluid Nozzle
3	Gun Body
4	Trigger Stud
5	Stop Ring
14	Pattern Control Knob
15	Fluid Control Knob
16	Needle Spring
22	Needle Packing Screw
23	Needle Packing Ring
24	Air Valve Packing Ring
32	Trigger
33	Air Inlet Screw
34	Air Inlet

No.	Description
35	Nipple
36	Fluid Joint
37	Screw Cap
38	Fastener
39	Cup Locking Lever
40	Cup Cover
41	Liquid Tube
42	Cup Cover Gasket
43	Cup
44	Trigger Valve Assembly
45	Fluid Control Assembly
46	Pattern Control Assembly
47	Vinyl Vent Tube
48	Vent Port