

WIRING INSTRUCTIONS

TITLE

HOLE HAWG

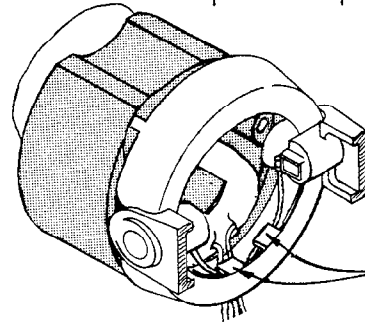
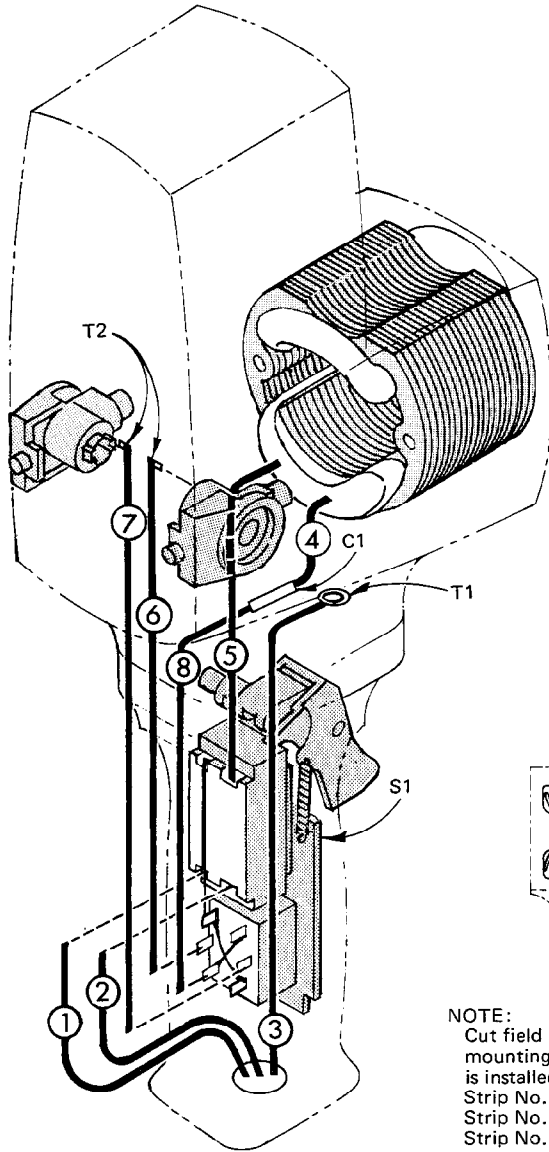
BULLETIN

58-01-0623

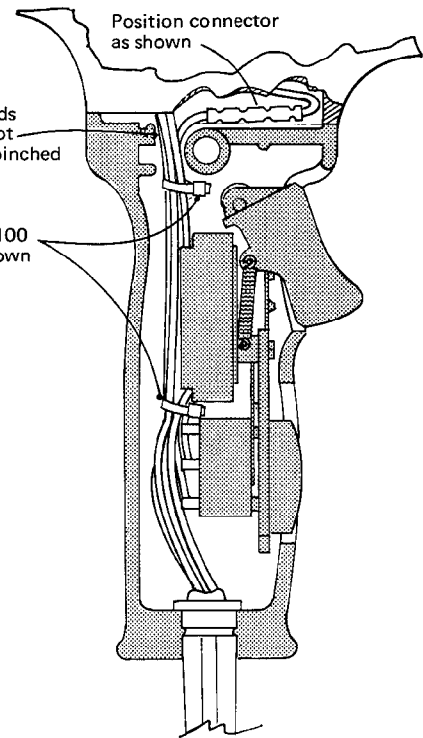
MILWAUKEE ELECTRIC TOOL CORP.

13135 WEST LISBON RD. BROOKFIELD, WIS

DATE
June '75

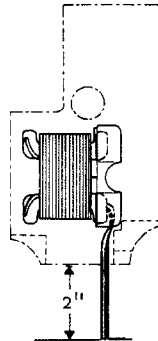


Run both Brush holder leads under flanges of Coil shield. Then dress the wires down thru slot in Coil shield



Position leads in handle slot to prevent pinched wires.

Place wire tie 23-78-0100 two places as shown



NOTE:
Cut field leads 2" from handle mounting surface after field is installed.
Strip No. 4 lead 1/4"
Strip No. 5 lead 3/8" & tin
Strip No. 1 & 2 leads 3/8" & tin

All lead lengths are before stripping.

WIRING SPECIFICATIONS

Wire No.	Wire Color	Origin or Gauge	Length	Terminal				Connector					
				T1	T2	T3	T4	C1	C2	C3	C4		
1	BLACK	CORD	3-1/4"										
2	WHITE	CORD	3-1/4"										
3	GREEN	CORD	7-1/4"	X									
4	YELLOW	FIELD	SEE NOTE					X					
5	BLACK	FIELD											
6	RED	SWITCH	8"		X								
7	YELLOW	SWITCH	8"		X								
8	BLACK	SWITCH	5"										

ELECTRICAL PARTS

TERMINAL DESCRIPTION		
Code	Part No.	Qty.
T1	23-74-0390	1
T2	22-44-0090	2
CONNECTOR DESCRIPTION		
Code	Part No.	Qty.
C1	23-74-0360	1
SWITCH DESCRIPTION		
Code	Part No.	Qty.
S1	23-66-0481	1