

# Operator's Manual



1800 Overview Drive • Rock Hill SC • 29730 USA

## **CP7300 Air Drill**

1/4 Inch - Model "P"



### **⚠ WARNING**

*To reduce risk of injury, everyone using, installing, repairing, maintaining, changing accessories on, or working near this tool must read and understand these instructions before performing any such task.*

# FOR DETAILED INFORMATION ABOUT CHICAGO PNEUMATIC AIR TOOLS AND EQUIPMENT CONTACT:

## HEADQUARTERS LOCATION UNITED STATES

**Chicago Pneumatic Tool Company**  
1800 Overview Drive  
Rock Hill, SC 29730 • USA  
Telephone: 1-803-817-7000  
1-800-367-2442 (USA only)  
Fax: 1-800-228-9096

## AUSTRALIA

Atlas Copco Tools Australia  
3 Bessemer Street  
Blacktown • Australia  
Telephone: 02-621-9482  
Fax: 02-671-5915

## BELGIQUE

Chicago Pneumatic Rep. Office  
Avenue Sluysmans 10-4030  
Liege • Belgium  
Tel/Fax: 04-343 8150

## BRASIL

Chicago Pneumatic Brasil  
Av. Mascote 159 V. Sta. Catarina  
04363-000  
Sao Paulo/SP • Brasil  
Telephone: (011) 562-7314  
Fax: (011) 563-9208

## CANADA

Chicago Pneumatic Tool Co.  
Automotive Division  
1800 Overview Drive  
Rock Hill, SC 29730  
Telephone: 1-803-817-7000  
Fax: 1-800-228-9096

## CENTRAL AMERICA

Contact Chicago Pneumatic/USA  
for names of CP Authorized  
Distributors in this area

## FRANCE

Espace Lumière  
Bâtiment S  
57, Boulevard de la République  
78403 Chatou Cédex. France  
Telephone: (0) 1 30 09 60 00  
Fax: (0) 1 30 71 96 70

## GERMANY

Desoutter GMBH  
Paul-Friedlander-Str  
65203 Wiesbaden • Germany  
Telephone: 49-0611-270120/22  
Fax: 49-0611-270140

## INDIA

Chicago Pneumatic Sales  
Chemtex House, First Floor  
Main Street  
Hiranadani Gardens  
Powai, Mumbai 400076, India  
Telephone: (22)25704907  
(22)25708984  
Fax: (22)25705042

## ITALY

Desoutter Italiana S.R.L.  
Viale Della Repubblica, 65  
20035 Lissone (Milano)

## MEXICO

Chicago Pneumatic Tool  
Company Mexico  
San Francisco #223  
Valle Dorado, Tlalnepantla  
C.P. 54020 • Mexico  
Telephone: 525-378-0754  
Fax: 525-378-0753

## SOUTH AFRICA

Chicago Pneumatic Tool Company, S.A.  
20 Anvil Road  
PO Box 105  
Isando 1600, Transvaal • South Africa  
Telephone: 011-9746761  
Fax: 011-974-2324

## SOUTH AMERICA

Contact Chicago Pneumatic/USA  
for names of CP Authorized  
Distributors in this area

## SOUTHEAST ASIA

Chicago Pneumatic Tool Company  
Regional Office  
P.O. Box 1516  
Unit 2103 - Citimark  
28 Yuen Shun Circuit  
Shatin  
New Territories, Hong Kong  
Telephone: (852) 3570963  
Fax: 852-763-1875

## SPAIN

Desoutter S.A.  
C. Serrano, 120  
28006 Madrid • Spain  
Telephone: 91 590 31 52  
Fax: 91 590 31 61

## SWEDEN

Chicago Pneumatic  
Distributor Markets  
Sickla Industriväg 7  
S-131 34 Nacka • Sweden  
Telephone: 46 8743 9329  
Fax: 46-8743 9427

## UNITED KINGDOM

Chicago Pneumatic Tool Company, Ltd.  
P.O. Box 241  
Eaton Road  
Hemel Hempstead, Herts HP2 7DR  
England  
Domestic: 01442-847703/06  
Export: 01442-232420/17  
Fax: 01442-2847723

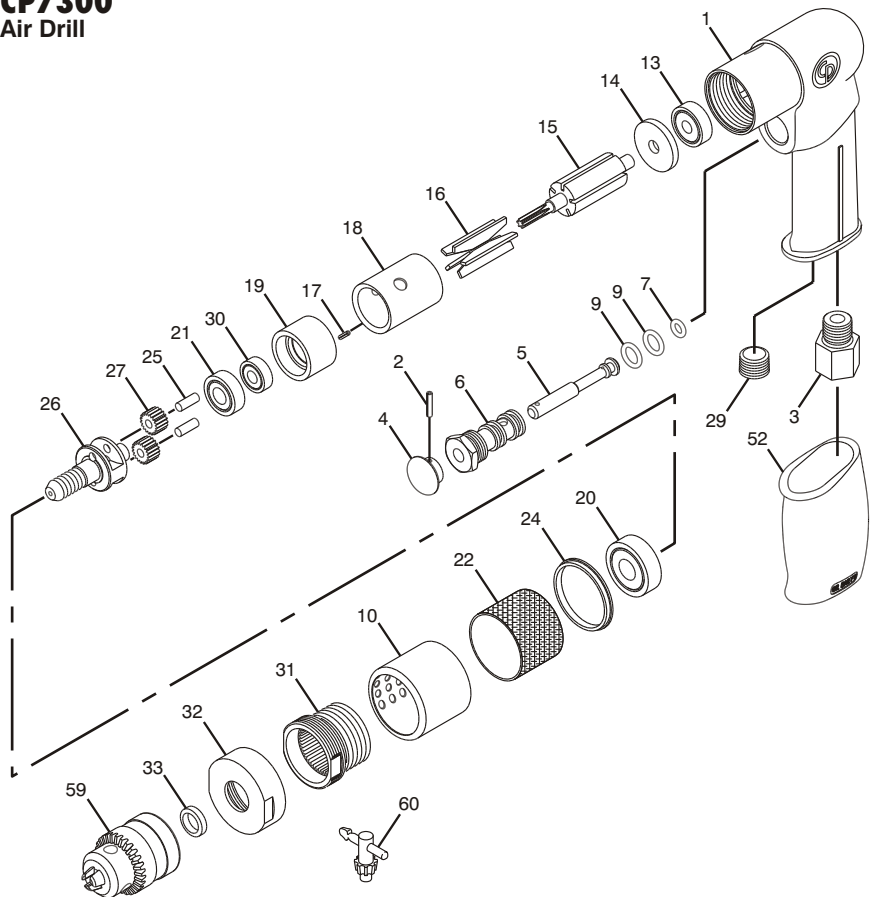
Visit our website:  
<http://www.cp.com>



8940158752 Rev C  
Printed in Taiwan  
KEK 10/04

# CP7300

## Air Drill

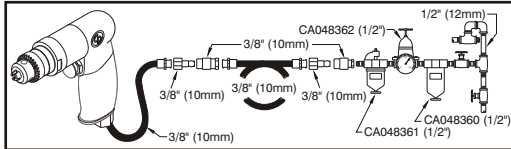


Index No.	Part No.	Description	No. Req'd.	Index No.	Part No.	Description	No. Req'd.
1	8940158730	Motor Housing	1	21	8940158686	Ball Bearing	1
2	8940158747	Spring Pin	1	22	8940158742	Filter	1
3	8940158688	Air Inlet	1	24	8940158743	Rubber Ring	1
4	8940158748	Trigger	1	25	8940158744	Pin	2
5	8940158749	Valve Stem	1	26	8940158733	Cage	1
6	8940158750	Valve Bushing	1	27	8940158745	Gear	2
7	KF131709	O-Ring	1	29	8940158734	Set Screw	1
9	8940158687	O-Ring	2	30	CA144793	Ball Bearing	1
10	8940158729	Exhaust Deflector	1	31	8940158735	Internal Gear	1
13	S039709	Ball Bearing	1	32	8940158736	Clamp Nut	1
14	8940158737	Rear End Plate	1	33	8940158746	Washer	1
15	8940158738	Rotor	1	52	8940158739	Rubber Grip	1
16	8940158741	Rotor Blade Set (5)	1	59	8940158751	Drill Chuck	1
17	CA144797	Spring Pin	1	60	8940162271	Chuck Key	1
18	8940158731	Cylinder	1		CA155648	Warning Label (Not Shown)	1
19	8940158732	Front End Plate	1				
20	8940158685	Ball Bearing	1				

## INSTRUCTION MANUAL

### Air Supply Requirements

1. Supply tool with 90 psig (6.2 bar) of clean, dry air. Higher pressure drastically reduces tool life.
2. Connect tool to air line using pipe, hose, and fitting sizes shown in the diagram.



### Lubrication

1. Use an air line lubricator with SAE #10 oil, adjusted to two (2) drops per minute. If an air line lubricator cannot be used, add air motor oil to the inlet once a day.
2. Make sure adequate lubrication is provided for internal gears for long life.

### Maintenance

1. Disassemble and inspect air motor every three months if the tool is used every day. Replace damaged or worn parts.
2. High wear parts are underlined in the parts list.

## EC DECLARATION OF CONFORMITY

We, Chicago Pneumatic Tool Company, 1800 Overview Drive, Rock Hill, SC 29730 USA, declare under our sole responsibility that the product to which this declaration relates, is in conformity with the requirements of the Council Directive of June 1998 on the approximation of the laws of the Member States relating to machinery (98/37/EC).

**Machine Name** CP7300 1/4 Inch Air Drill

**Machine Type** Power tool equipped with 1/4" chuck for use with various drill bits for drilling holes - No other use is permitted.

**Serial No.** Tools with No. 02319P or higher

### Technical Data

Free speed 2800 RPM

Air pressure 90 psi (6.2 bar)

**Harmonized Standards Applied** EN292

**National Standards Applied** ISO 8662-1, ISO15744

**Name And Position Of Issuer** Yves Antier, General Manager, Chicago Pneumatic Tool Company

**Signature Of Issuer** 

**Place And Date Of Issue** Rock Hill, SC 29730 USA, November 1, 2002

### Noise & Vibration Declaration\*

Sound pressure level 86 dB(A), uncertainty 3 dB(A), in accordance with ISO 15744. For sound power, add 11 dB(A).

Vibration value <2.5 m/s<sup>2</sup>, re. ISO 8662-1.

\*These declared values were obtained by laboratory type testing in compliance with the stated standards and are not adequate for use in risk assessments. Values measured in individual work places may be higher than the declared values. The actual exposure values and risk of harm experienced by an individual user are unique and depend upon the way the user works, the workpiece and the workstation design, as well as upon the exposure time and the physical condition of the user. We, Chicago Pneumatic, cannot be held liable for the consequences of using the declared values, instead of values reflecting the actual exposure, in an individual risk assessment in a work place situation over which we have no control.

### Copyright 2004, Chicago Pneumatic Tool Company

All rights reserved. Any unauthorized use or copying of the contents or part thereof is prohibited. This applies in particular to trademarks, model denominations, part numbers and drawings. Use only authorized parts. Any damage or malfunction caused by the use of unauthorized parts is not covered by Warranty or Product Liability.



## ⚠ WARNING

To reduce risk of injury, everyone using, installing, repairing, maintaining, changing accessories on, or working near this tool must read and understand these instructions before performing any such task.

2

The goal of Chicago Pneumatic is to produce tools that help you work safely and efficiently. The most important safety device for this or any tool is YOU. Your care and good judgment are the best protection against injury. All possible hazards cannot be covered here, but we have tried to highlight some of the important ones.

### For Additional Safety Information Consult:

- ▲ Your employer union and/or trade association.
- ▲ US Department of Labor (OSHA); [www.osha.gov](http://www.osha.gov); Council of the European Communities [europe.osha.eu.int](http://europe.osha.eu.int).
- ▲ "Safety Code For Portable Air Tools" (B186.1) available from: [www.ansi.com](http://www.ansi.com)
- ▲ "Safety Requirement For Hand-Held Non-Electric Power Tools" available from: European Committee for Standardization, [www.cenorm.be](http://www.cenorm.be)

### Air Supply And Connection Hazards

- ▲ Air under pressure can cause severe injury.
- ▲ Always shut off air supply, drain hose of air pressure and disconnect tool from air supply when not in use, before changing accessories or when making repairs.
- ▲ Never direct air at yourself or anyone else.
- ▲ Whipping hoses can cause serious injury. Always check for damaged or loose hoses and fittings.
- ▲ Do not use quick disconnect couplings at tool. See instructions for correct set-up.
- ▲ Whenever universal twist couplings are used, lock pins must be installed.
- ▲ Do not exceed maximum air pressure of 90 psi (6.2 bar) or as stated on tool nameplate.

### Entanglement Hazards

- ▲ Keep away from rotating bit and chuck.
- ▲ Do not wear jewelry or loose clothing.
- ▲ You can be cut or burned if you come in contact with the drill bit, chips or work surface.
- ▲ Use intermittent drill pressure to avoid long shaved chips.
- ▲ Scalping can occur if hair is not kept away from tool and accessories.
- ▲ Choking can occur if neckwear is not kept away from tool and accessories.

### Projectile Hazards

- ▲ Always wear impact-resistant eye and face protection when involved with or near the operation, repair or maintenance of the tool or changing accessories on the tool.
- ▲ Be sure all others in the area are wearing impact-resistant eye and face protection.
- ▲ Even small projectiles can injure eyes and cause blindness.

### Bit Binding Hazards

- ▲ The drill bit can suddenly bind and cause the work piece or tool to rotate, causing arm and shoulder injuries.
- ▲ Enough torque is generated to cause falls.
- ▲ Always use sharp bits.
- ▲ Reduce downward pressure at breakthrough.
- ▲ ANSI recommends the use of a support handle on drills with a chuck capacity larger than 3/8 in. or 10 mm.
- ▲ Operators and maintenance personnel must be physically able to handle the bulk, weight and power of this tool.

### Workplace Hazards

- ▲ Slip/Trip/Fall is a major cause of serious injury or death. Beware of excess hose left on the walking or work surface.
  - ▲ High sound levels can cause permanent hearing loss. Use hearing protection as recommended by your employer or OSHA regulation (see 29 CFR part 1910).
  - ▲ Maintain a balanced body position and secure footing.
  - ▲ Repetitive work motions, awkward positions and exposure to vibration can be harmful to hands and arms. If numbness, tingling, pain or whitening of the skin occurs, stop using tool and consult a physician.
  - ▲ Avoid inhaling dust or handling debris from the work process which can be harmful to your health. Use dust extraction and wear respiratory protective equipment when working with materials which produce airborne particles.
  - ▲ Proceed with care in unfamiliar surroundings. Hidden hazards may exist, such as drilling into electric or other utility lines.
  - ▲ This tool is not intended for use in an explosive atmosphere and is not insulated for contact with electric power sources.
  - ▲ Some dust created by power sanding, sawing, grinding, drilling and other construction activities contains chemicals known to the State of California to cause cancer and birth defects or other reproductive harm. Some examples of these chemicals are:
    - Lead from lead based paints
    - Crystalline silica bricks and cement and other masonry products
    - And Arsenic and chromium from chemically-treated rubber
- Your risk from these exposures varies, depending on how often you do this type of work. To reduce your exposure to these chemicals: work in a well ventilated area, and work with approved safety equipment, such as dust masks that are specially designed to filter out microscopic particles.

- ▲ For professional use only.

# SAFETY INSTRUCTIONS

## DO NOT DISCARD - GIVE TO USER