

Please carefully read and save these instructions before attempting to assemble, maintain, install, or operate this product. Observe all safety information to protect yourself and others. Failure to observe the instructions may result in property damage and/or personal injury. Please keep instructions for future reference.

Important Operating Instructions



7 TON ELECTRIC LOG SPLITTER

Model: 05620

CALIFORNIA PROPOSITION 65

WARNING: You can create dust when you cut, sand, drill or grind materials such as wood, paint, metal, concrete, cement, or other masonry. This dust often contains chemicals known to cause cancer, birth defects, or other reproductive harm. Wear protective gear.

WARNING: This product or its power cord may contain chemicals, including lead, known to the State of California to cause cancer and birth defects or other reproductive harm. Wash hands after handling.

Important!

When using equipment, a few safety precautions must be observed to avoid injuries and damage. Please read the complete operating manual with due care. Keep this manual in a safe place, so that the information is available at all times. If you give the equipment to any other person, give them these operating instructions as well. We accept no liability for damage or

accidents which arise due to non-observance of these instructions and the safety information herein.

SPECIFICATIONS

No load speed: 3450rpm
Max splitting force: 7 tons
Ram Diameter: 2 1/5"
Log Capacity Diameter: 2"-10"
Log length: 20.5 "
Hydraulic oil capacity: 2.8L

CAUTION:

FOR YOUR OWN SAFETY READ INSTRUCTION MANUAL COMPLETELY AND CAREFULLY BEFORE OPERATING. Failure to follow all instructions as listed below may result in electrical shock, fire, and/or serious personal injury.

SAFETY INSTRUCTIONS

WARNING: Improper use of a log splitter can cause injury and death.

Keep the work area clean and well lit.

Do not use this tool in damp or wet conditions. Do not expose it to rain.

Store idle equipment. When the tool is not in use, store it in a dry location.

Do not attempt to use the tool for a purpose it was not intended to be used for. Do not force the tool to do work it was not meant to do.

Do not overreach when using the tool. Keep proper footing and balance at all times.

Stay alert while operating the tool. Do not operate the tool under the influence of drugs or alcohol.

For warranty purchases, please keep your dated proof of purchase. File or attach to the manual for safekeeping.

Check for damaged or misaligned parts before using the splitter. Do not use the splitter if it is damaged and have it serviced before use.

Keep both hands away from edge plate during use. Wedge can cut through sin and break bones.

Wear safety glasses to avoid eye injury from pieces of log that may fly out while splitting.

High pressure fluid can inject under skin resulting in serious injury. Make sure all fittings are tight before applying pressure. Relieve system pressure before servicing. Do not check for leaks with hand. Use a piece of cardboard to check for leaks. If skin injection occurs, seek immediate treatment.

Serious injury or death can occur if splitter is improperly towed.

Do not ride or transport cargo on the splitter. Drive with the splitter securely attached. Turn off the vehicle before leaving the splitter unattended. Choose a level surface to operate the splitter and block the wheels to prevent rolling.

Position muffler at least 7 feet away from combustible objects.

Stop the engine before adding fuel and keep heat, sparks and flames away.

Do not add fuel while the engine is still running or hot.

Use an approved container to add fuel to the splitter. Do not pump fuel directly into the splitter at a gas station.

Do not change or add to the exhaust system, fuel tanks or fuel lines.

Check for fuel leaks before use.

The wedge can crush bones and cut through skin. Keep hands away from wedge and beam slide.

ASSEMBLY

- 1) Attach the rolling wheel on the supporting shaft by inserting the wheels into the shaft and block it using the washer and fasten it with a lock nut.
- 2) Assemble the supporting leg on the machine body by using the two bolts and washers.
- 3) Use the bolts to fasten the safety guard onto the supporting bracket to protect the control lever.
- 4) Turn the rubber knob onto the control lever for comfortable operation.

OPERATION

WARNING: Before operation, ensure the bleed screw is loosened slightly so air can

release and enter from the tank smoothly. Air flow through the screw hole should be detectable while the log splitter is operating. Failure to loosen the bleed screw can cause the seals of the hydraulic system to blow out and cause permanent damage to the log splitter.

Before moving the splitter, ensure the screw is tightened to avoid oil from leaking from the screw.

The maximum pressure setting for the liting screw was set by the manufacturer. Unauthorized resetting will cause the hydraulic pump to fail and can cause serious damage and/or injury to the operator as well as the log splitter.

This log splitter is equipped with a control system that requires the user to operate the log splitter with two hands. The log splitter will freeze if both controls are not operated at the same time.

Do not attempt to run this log splitter for more than 5 seconds at a time; the log splitter could become damaged if done so. Instead, rotate the log 90 degrees to see if the log can be split by positioning it in a different direction.

Always place the logs firmly on the log retaining plates and

work table. Ensure the log will not twist, split or rock while being split.

Break the log in the direction of its grown grain. Do not place a log across the splitter.

Do not attempt to split two logs at the same time.

OPERATING INSTRUCTIONS

- 1) Load a log onto the beam and against the endplate.
- 2) Make sure hands are clear of the splitter.
- 3) Push control valve handle forward by one hand to split log.
- 4) Push control valve handle backward by one hand to return wedge to original position.
- 5) Clear split wood from work area.

Clearing jams

- 1) Release both controls.
- 2) After the log pusher moves back and completely stops, insert a wedge of wood under the jammed log.
- 3) Start the log splitter to push the wedge of wood under the jammed log.
- 4) Repeat with sharper slope wedges of wood until the log is completely free.

Do not attempt to knock off the jammed log. It can cause damage to the machine or operator.

Replacing the hydraulic oil

Replace the hydraulic oil after 150 hours of use.

- 1) Ensure all moving parts are stopped and the splitter is unplugged.
- 2) Unscrew the oil drain dipstick to remove it.
- 3) Place a container on the ground and turn the log splitter over its motor side to drain the oil. Return to its proper position after the oil has drained.
- 4) Refill the splitter with fresh oil.
- 5) Clean the dipstick of oil and place it back into the tank.
- 6) Ensure the level of oil is between the two grooves on the dipstick.
- 7) Re-screw the drain bolt, ensure it is tightened to avoid leakage.

WARNING TOWING HAZARD

Serious injury may occur if this machine rolls out of control or tips

- 1) Speed limit. Never tow this machine over 5mph. Faster speeds may result in loss of control.

2) Off road towing only. This machine should not be towed on any street, highway or public road.

3) Added length. Be aware of the added length of the attached machine.

4) Rough terrain. Drive slowly and take extra caution when traveling over rough terrain.

5) Unattended. Turn off the towing vehicle before leaving the machine unattended.

6) Under the influence. Never tow or operate this machine while under the influence of alcohol, drugs, or medication.

Limited Manufacturer Warranty

North American Tool (NAT) Industries makes every effort to ensure that this product meets high quality and durability standards. NAT warrants to the original retail consumer a 1-year limited warranty from the date the product was purchased at retail and each product is free from defects in materials. Warranty does not apply to defects due directly or indirectly to misuse, abuse, negligence, or accidents, repairs or alterations, or a lack of maintenance. NAT shall in no event be liable for death, injuries to persons or property, or for incidental, special, or consequential damages arising from the use of our products. To receive service under warranty, the original manufacturer part must be returned for examination by an authorized service center. Shipping and handling charges may apply. If a defect is found, NAT will either repair or replace the product at its discretion.

DO NOT RETURN TO STORE

For Customer Service:

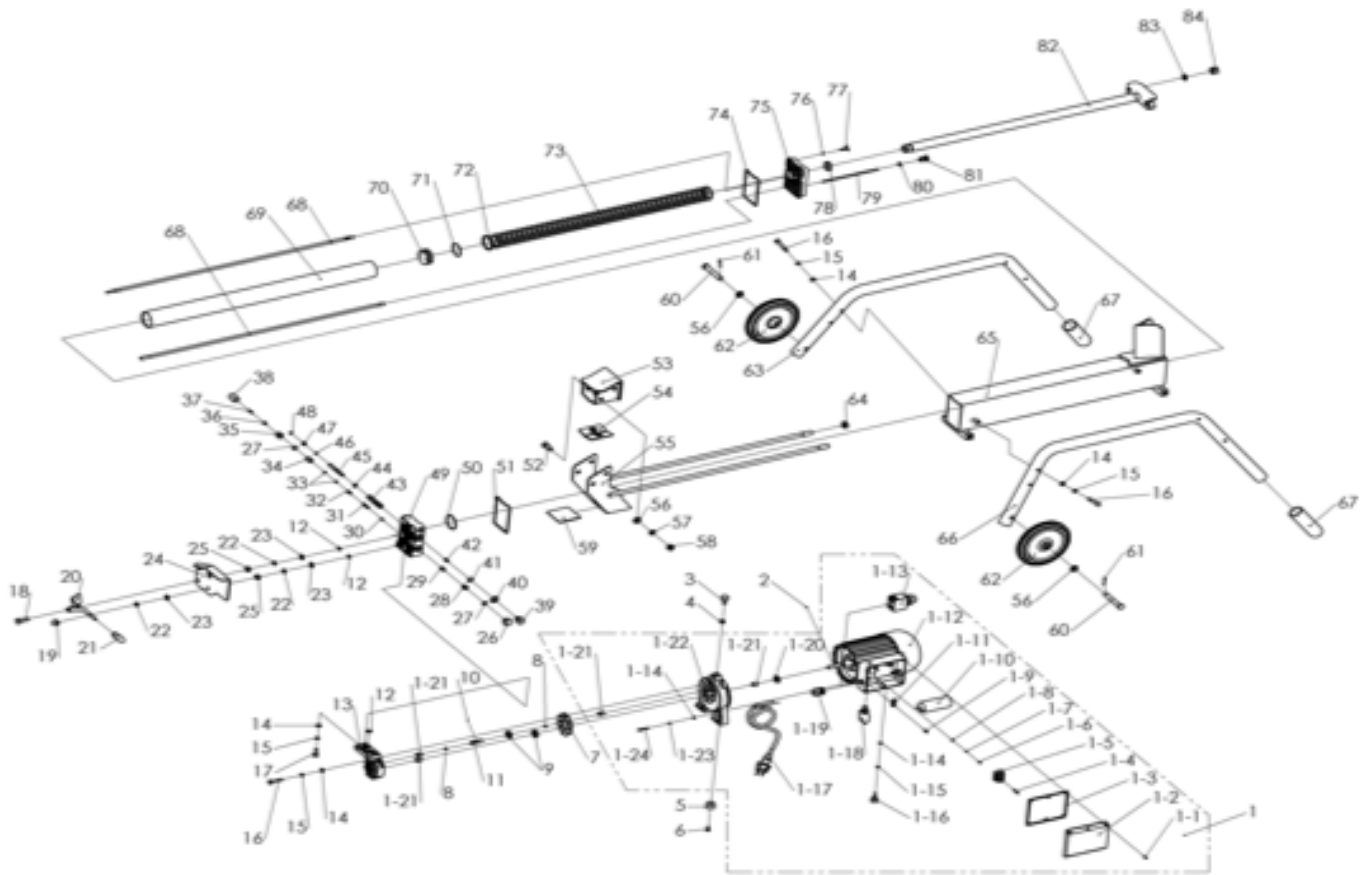
Email : feedback@natitools.com or Call 1-800-348-5004



7 TON ELECTRIC LOG SPLITTER

Model: 05620

Parts List





7 TON ELECTRIC LOG SPLITTER

Model: 05620

Parts List

Part No.	Description	Q'ty	Part No.	Description	Q'ty
1	Motor	1	21	Adjust handle cap	1
1-1	Self-tap screw	6	22	Elastic washer	5
1-2	Upper switch box cover		23	Flat washer	5
1-3	Rubber pad	1	24	Protecting guard	1
1-4	screw	2	25	Nut	2
1-5	Connection block	1	26	Hex nut	1
1-6	Screw	1	27	Sealing ring	2
1-7	Elastic washer	1	28	Screw	1
1-8	Tooth washer	1	29	Oil cave	1
1-9	Self-tap screw	2	30	Cone cave	1
1-10	Capacitor	1	31	Adjusting spring	1
1-11	Clamping clip	1	32	Minor shaft	1
1-12	Motor body	1	33	Sealing ring	2
1-13	Switch	1	34	Tub for minor shaft	1
1-14	Flat washer	3	35	Nut	1
1-15	Nut	1	36	Nut	1
1-16	Rubber pad	1	37	Locking screw	1
1-17	Plug cord	1	38	Plastic cap	1
1-18	Overload protector	1	39	Position bolt	1
1-19	Bushing	1	40	Copper washer	1
1-20	Gasket	1	41	Sealing ring	1
1-21	Spindle sleeve	4	42	Spring	1
1-22	Front cover	1	43	Controlling valve	1
1-23	Elastic washer	3	44	Sealing ring	5
1-24	bolt	3	45	Traveling valve	1
2	Pin	1	46	Sealing ring	1
3	Rubber pad	1	47	Spring	1
4	Nut	1	48	e-ring	1
5	Rubber pad	2	49	Front cover	
6	Bolt	10	50	Sealing ring	1
7	Clapboard	1	51	Front cover ring	1
8	Steel ring	2	52	Bolt	4
9	Gear wheel	2	53	Pressing head	1
10	Steel ball	1	54	Upper pad	1
11	Gear axis	1	55	Log pusher	1
12	Sealing ring	6	56	Flat washer	6
13	Oil pump body	1	57	Elastic washer	4
14	Flat washer	17	58	Nut	4
15	Elastic washer	17	59	Lower pad	1
16	Bolt	14	60	Rolling wheel shaft	2
17	Bolt	3	61	Pin	2
18	Screw	1	62	Rolling wheel	2
19	Nut	3	63	Supporting leg	1
20	Adjust handle	1	64	Nut	1