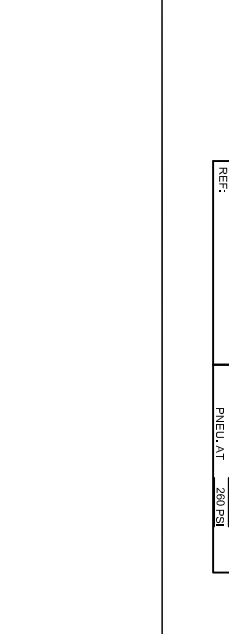
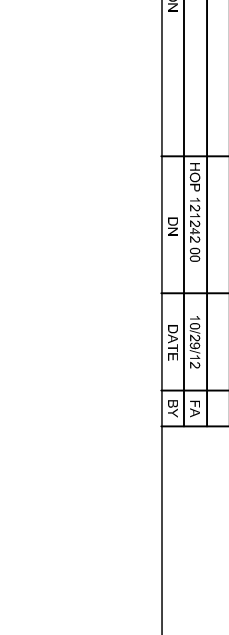


01	UPDATED PRINT	HOP 121242 00	10/29/12	FA
ED	DESCRIPTION	DN	DATE	BY



ITEM	P/N	DESCRIPTION	QTY
1	H931741	3800 2.5E LOGEL HEAD	2
2	R100462	200" X 55.50" X 03.50"	2
3	E100280	2" SMC WELD FLANGE	5
4	E502900	2" PLASTIC FLANGE	3
5	E101000	1" NPT WELD FLANGE	3
6	F501000	1" PLASTIC PLUG	3
7	E100500	1/2" NPT WELD FLANGE	1
8	F500500	1/2" PLASTIC PLUG	1
9	F100250	1/4" NPT WELD FLANGE	1
10	F500250	1/4" PLASTIC PLUG	1
11	S102186	SCT ASV 23.5" OD W/CLR	1
12	S100001	NAME PLATE	1
13			

HEAD THK: 1/4 MIN.
SHELL THK: .200 NOM.
MATT BD YES: STRAP "U"
VOLUME: APPROX 200 GALLONS
CRN: L40835C
REF:

C.A.: NONE
MATT: SMI14G
MAWVP: 200 PSI
MIDMT: -20°F
PNEU AT: 280 PSI

EFF: 85%
EFF: 70%
AT: 400°F
AT: 200 PSI

TEST: HYDRO AT 280 PSI

HEAD THK: 1/4 MIN.
SHELL THK: .200 NOM.
MATT BD YES: STRAP "U"
VOLUME: APPROX 200 GALLONS
CRN: L40835C
REF:

C.A.: NONE
MATT: SMI14G
MAWVP: 200 PSI
MIDMT: -20°F
PNEU AT: 280 PSI

EFF: 85%
EFF: 70%
AT: 400°F
AT: 200 PSI

TEST: HYDRO AT 280 PSI

HEAD THK: 1/4 MIN.
SHELL THK: .200 NOM.
MATT BD YES: STRAP "U"
VOLUME: APPROX 200 GALLONS
CRN: L40835C
REF:

C.A.: NONE
MATT: SMI14G
MAWVP: 200 PSI
MIDMT: -20°F
PNEU AT: 280 PSI

EFF: 85%
EFF: 70%
AT: 400°F
AT: 200 PSI

TEST: HYDRO AT 280 PSI

HEAD THK: 1/4 MIN.
SHELL THK: .200 NOM.
MATT BD YES: STRAP "U"
VOLUME: APPROX 200 GALLONS
CRN: L40835C
REF:

C.A.: NONE
MATT: SMI14G
MAWVP: 200 PSI
MIDMT: -20°F
PNEU AT: 280 PSI

EFF: 85%
EFF: 70%
AT: 400°F
AT: 200 PSI

TEST: HYDRO AT 280 PSI

1	SFT1 SK 1	MAGNETIC PARTICLE
2	SFT1 SK 2	SPOT X-RAY PER UWS2
3	SFT-2-1	FULL X-RAY PER UWS1
4	ATTACHMENT W/BS	PER UWS1
5		REQUIRED

DEPENDENT FROM PUBLISHED ACCORDING TO:
ADVA COMPRESSOR SYSTEMS INC, LTD.
3110 9003 RD
510 0000 00

THIS DOCUMENT IS OUR PROPERTY AND SHALL NOT BE REPRODUCED OR TRANSMITTED IN ANY FORM OR BY ANY MEANS, ELECTRONIC OR MECHANICAL, INCLUDING PHOTOCOPYING, RECORDING, OR BY ANY INFORMATION STORAGE AND RETRIEVAL SYSTEM, WITHOUT THE WRITTEN PERMISSION OF ADVANCED COMPRESSOR SYSTEMS INC.

TANK - 200 GAL VERTICAL

DATE: 10/29/12

1310 0720 53 01

ITEM	P/N	DESCRIPTION	QTY
1	H931741	3800 2.5E LOGEL HEAD	2
2	R100462	200" X 55.50" X 03.50"	2
3	E100280	2" SMC WELD FLANGE	5
4	E502900	2" PLASTIC FLANGE	3
5	E101000	1" NPT WELD FLANGE	3
6	F501000	1" PLASTIC PLUG	3
7	E100500	1/2" NPT WELD FLANGE	1
8	F500500	1/2" PLASTIC PLUG	1
9	F100250	1/4" NPT WELD FLANGE	1
10	F500250	1/4" PLASTIC PLUG	1
11	S102186	SCT ASV 23.5" OD W/CLR	1
12	S100001	NAME PLATE	1
13			

DEPENDENT FROM PUBLISHED ACCORDING TO:
ADVA COMPRESSOR SYSTEMS INC, LTD.
3110 9003 RD
510 0000 00

THIS DOCUMENT IS OUR PROPERTY AND SHALL NOT BE REPRODUCED OR TRANSMITTED IN ANY FORM OR BY ANY MEANS, ELECTRONIC OR MECHANICAL, INCLUDING PHOTOCOPYING, RECORDING, OR BY ANY INFORMATION STORAGE AND RETRIEVAL SYSTEM, WITHOUT THE WRITTEN PERMISSION OF ADVANCED COMPRESSOR SYSTEMS INC.

TANK - 200 GAL VERTICAL

DATE: 10/29/12

1310 0720 53 01

ITEM	P/N	DESCRIPTION	QTY
1	H931741	3800 2.5E LOGEL HEAD	2
2	R100462	200" X 55.50" X 03.50"	2
3	E100280	2" SMC WELD FLANGE	5
4	E502900	2" PLASTIC FLANGE	3
5	E101000	1" NPT WELD FLANGE	3
6	F501000	1" PLASTIC PLUG	3
7	E100500	1/2" NPT WELD FLANGE	1
8	F500500	1/2" PLASTIC PLUG	1
9	F100250	1/4" NPT WELD FLANGE	1
10	F500250	1/4" PLASTIC PLUG	1
11	S102186	SCT ASV 23.5" OD W/CLR	1
12	S100001	NAME PLATE	1
13			

DEPENDENT FROM PUBLISHED ACCORDING TO:
ADVA COMPRESSOR SYSTEMS INC, LTD.
3110 9003 RD
510 0000 00

THIS DOCUMENT IS OUR PROPERTY AND SHALL NOT BE REPRODUCED OR TRANSMITTED IN ANY FORM OR BY ANY MEANS, ELECTRONIC OR MECHANICAL, INCLUDING PHOTOCOPYING, RECORDING, OR BY ANY INFORMATION STORAGE AND RETRIEVAL SYSTEM, WITHOUT THE WRITTEN PERMISSION OF ADVANCED COMPRESSOR SYSTEMS INC.

TANK - 200 GAL VERTICAL

DATE: 10/29/12

1310 0720 53 01

ITEM	P/N	DESCRIPTION	QTY
1	H931741	3800 2.5E LOGEL HEAD	2
2	R100462	200" X 55.50" X 03.50"	2
3	E100280	2" SMC WELD FLANGE	5
4	E502900	2" PLASTIC FLANGE	3
5	E101000	1" NPT WELD FLANGE	3
6	F501000	1" PLASTIC PLUG	3
7	E100500	1/2" NPT WELD FLANGE	1
8	F500500	1/2" PLASTIC PLUG	1
9	F100250	1/4" NPT WELD FLANGE	1
10	F500250	1/4" PLASTIC PLUG	1
11	S102186	SCT ASV 23.5" OD W/CLR	1
12	S100001	NAME PLATE	1
13			

DEPENDENT FROM PUBLISHED ACCORDING TO:
ADVA COMPRESSOR SYSTEMS INC, LTD.
3110 9003 RD
510 0000 00

THIS DOCUMENT IS OUR PROPERTY AND SHALL NOT BE REPRODUCED OR TRANSMITTED IN ANY FORM OR BY ANY MEANS, ELECTRONIC OR MECHANICAL, INCLUDING PHOTOCOPYING, RECORDING, OR BY ANY INFORMATION STORAGE AND RETRIEVAL SYSTEM, WITHOUT THE WRITTEN PERMISSION OF ADVANCED COMPRESSOR SYSTEMS INC.

TANK - 200 GAL VERTICAL

DATE: 10/29/12

1310 0720 53 01