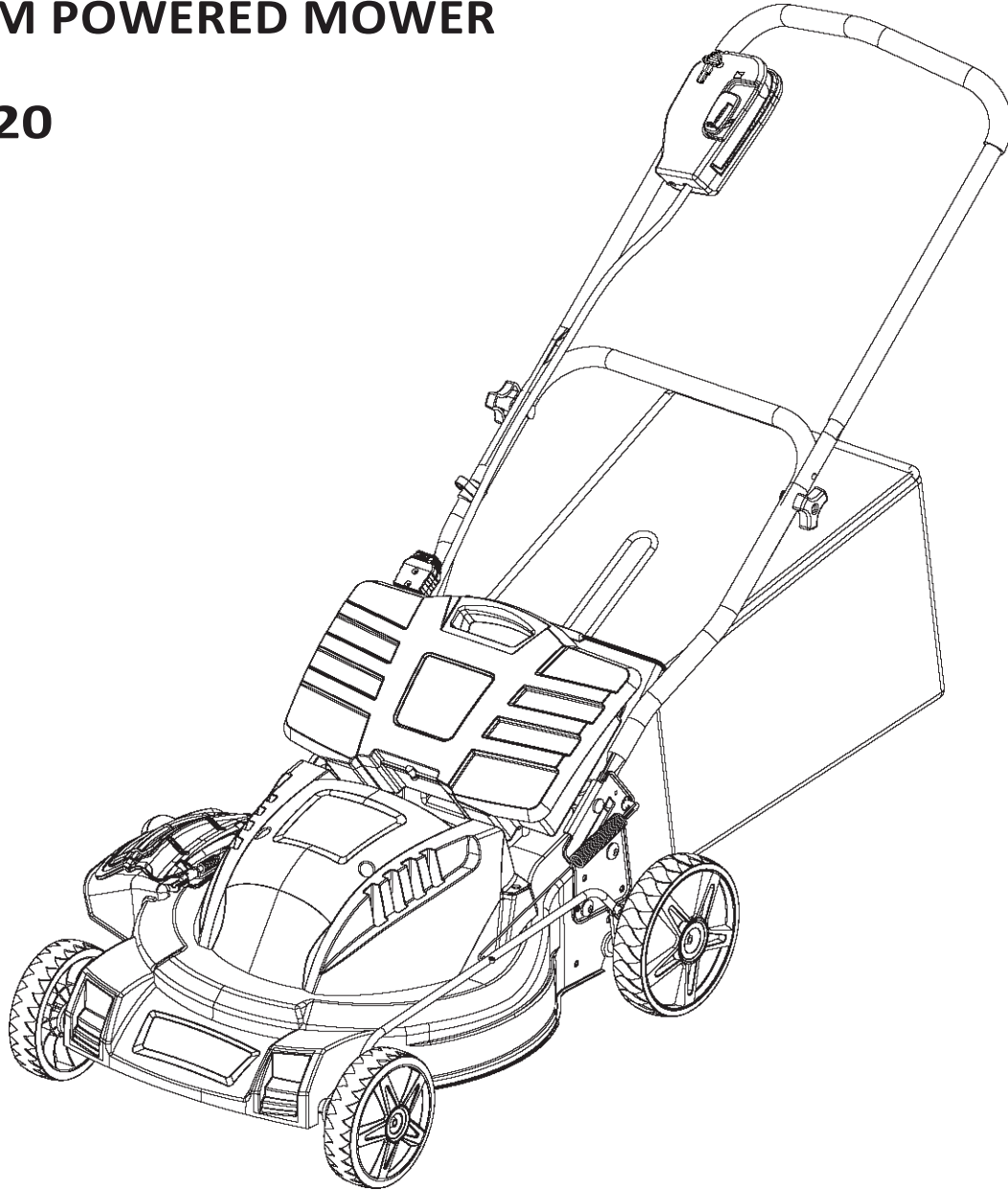




OPERATOR'S MANUAL

LITHIUM POWERED MOWER

PMLI-20



WARNING

To reduce the risk of injury, the user must read and understand the operator's manual before using this PRODUCT.

PRODUCT SPECIFICATION

Component	Specifications
Battery Capacity	36 V d.c. 10.5AH Lithium
Charge Time	4 hours
Cutting Time	40-45 min
No-load Speed	3,500r /min
Cutting Path	20 in. (508 mm)
Height Adjustment	1-3/4–3-3/4 in. (45mm – 95mm)
Wheel Sizes	7in. (front)/ 8 in. (rear)
Gross Weight (G.W)	75 lbs. (34kgs)
Net Weight (N.W)	66 lbs. (30kgs)
Battery Charge Cycles	over 500 times

WARNING SYMBOLS



Severing of toes or fingers from rotary mower blade.



Thrown objects from mower deck.



Keep bystanders/children away.



Safety alert.




Slip on slope.



Read the operator's manual.



CPSC Danger label.

 **Please Read And Understand this entire manual before attempting to assemble, operate or install the product. These safety instructions are not meant to cover every possible condition that could occur.**

SAFETY INSTRUCTIONS

⚠ WARNING: Read all instructions when using electric gardening appliances.

Basic safety precautions should always be followed to reduce the risk of fire, electric shock and personal injury.

FOR ALL LAWN MOWERS

a) Avoid Dangerous Environment

Don't use this product in damp or wet locations. **Use ONLY for Intended purpose.**

b) Do not Use In Rain

c) Keep Children Away

All bystanders should be kept at a safe distance from work area.

d) Dress Properly

Do not wear loose clothing or jewelry. They can be caught in moving parts. Use of rubber gloves and substantial footwear is recommended when working outdoors. Wear protective hair covering to contain long hair.

e) Use safety glasses

Always use face or dust mask if operation is dusty.

f) Use right appliance

Do not use appliance for any job except that for which it is intended.

g) Don't force appliance

It will do the job better and safer at the rate for which it was designed.

h) Don't overreach

Keep proper footing and balance at all times.

i) Stay alert

Watch what you are doing. Use common sense. Do not operate appliance when you are tired.

j) Store idle appliances indoors

When not in use, appliances should be stored indoors in dry and high or locked-up place -out of reach of children.

k) Maintain appliance with care

Keep cutting edge sharp and clean for best and safest performance and to reduce the risk of injury. Follow instructions for lubricating and changing accessories. Keep handles dry, clean and free from oil and grease.

l) Check damaged parts

Before further use of the appliance, a guard or other part that is damaged should be carefully checked to determine that it will operate properly and perform its intended function. Check for alignment of moving parts, binding of moving parts, breakage of parts, mounting, and any other condition that may affect its operation. A guard or other part that is damaged should be properly repaired or replaced by an authorized service center unless indicated elsewhere in this manual.

m) Keep guards in place and in working order

n) Keep blades sharp

o) Keep hands and feet away from cutting area

p) Objects struck by the lawn mower blade can cause severe injuries to persons

The lawn should always be carefully examined and cleared of all objects prior to each mowing

q) If lawn mower strikes a foreign object, follow these steps:

i) Stop lawn mower. Remove the safety key.

ii) Inspect for damage.

iii) Repair any damage before restarting and operating the lawn mower.

r) Use identical replacement blades only

SAFETY INSTRUCTIONS

SAFETY INSTRUCTIONS FOR BATTERY-OPERATED LAWN MOWERS

- a) Do not charge lawn mower in rain or in wet locations.
- b) Do not use battery-operated lawn mower in rain.
- c) Remove or disconnect safety key before servicing, cleaning, or removing material from the lawn mower.
- d) Use only the following type and size battery: type **PMLI-20,22018,22025** lithium battery.
- e) Do not dispose of the battery in a fire. The cell may explode. Check with local codes for possible special disposal instructions.
- f) Do not open or mutilate the battery. Released electrolyte is corrosive and may cause damage to the eyes or skin. It may be toxic if swallowed.
- g) Exercise care in handling batteries in order not to short the battery with conducting materials such as rings, bracelets and keys. The battery or conductor may overheat and cause burns.

CAUTION

The electrolyte is a dilute sulfuric acid that is harmful to the skin and eyes. It is electrically conductive and corrosive. The following procedures should be observed:

- a) Wear full eye protection and protective clothing.
- b) If electrolyte contacts the skin, wash it off immediately with water.
- c) If electrolyte contacts the eyes, flush thoroughly and immediately with water.
Seek medical attention.

SAFETY INSTRUCTIONS FOR WALK-BEHIND MOWERS

I. GENERAL OPERATION

1. Read, understand and follow all instructions on the machine and in the manual before starting.
2. Do not put hands or feet near or under the machine. Keep clear of the discharge opening at all times.
3. Only allow responsible adults, who are familiar with the instructions, to operate this machine.
4. Clear the area of objects such as rocks, wire, toys, etc., which could be thrown by the blade. Stay behind the handle when the motor is running.
5. Be sure the area is clear of bystanders before operating. Stop machine if anyone enters the area.
6. Do not operate machine barefooted or while wearing sandals. Always wear substantial footwear.
7. Do not pull machine backward unless absolutely necessary. Always look down and behind before and while moving backward.
8. Never direct discharged material toward anyone. Avoid discharging material against a wall or obstruction. Material may ricochet back toward the operator. Stop the blade when crossing gravel surfaces.
9. Do not operate machine without the entire grass catcher, discharge guard, rear guard, or other safety protective devices in place and working.
10. Never leave a running machine unattended.
11. Stop the motor, remove the safety key and wait until the blade comes to a complete stop before cleaning the machine, removing grass catcher, or unclogging the discharge guard.
12. Operate machine only in daylight or good artificial light.
13. Do not operate machine while under the influence of alcohol or drugs.
14. Never operate mower in wet grass. Always be sure of your footing; walk, never run.
15. If the machine should start to vibrate abnormally, stop the engine (motor) and check for the cause immediately.
Vibration is generally a warning of trouble.

SAFETY INSTRUCTIONS

16. Always wear eye protection when operating machine.
17. See manufacturer's instructions for proper operation and installation of accessories.
Only use accessories approved by the manufacturer.

II. SLOPE OPERATION

Slopes are a major factor related to slip and fall accidents, which can result in severe injury. Operation on all slopes requires extra caution. If you feel uneasy on a slope, do not mow it.

1. Mow across the face of slopes; never up and down. Exercise extreme caution when changing direction on slopes.
2. Watch for holes, ruts, bumps, rocks, or other hidden objects. Uneven terrain could cause a slip and fall accident. Tall grass can hide obstacles.
3. Do not mow on wet grass or excessively steep slopes. Poor footing could cause a slip and fall accident.
4. Do not mow near drop-offs, ditches, or embankments. You could lose your footing or balance.

III. CHILDREN

Tragic accidents can occur if the operator is not alert to the presence of children.

Children are often attracted to the machine and the mowing activity. Never assume that children will remain where you last saw them.


1. Keep children out of the mowing area and under the watchful care of a responsible adult other than the operator.
2. Be alert and turn mower off if a child enters the area.
3. Never allow children to operate the machine.
4. Use extra care when approaching blind corners, shrubs, trees, or other objects that may block your view of a child.

IV. SERVICE

GENERAL SERVICE

1. Keep all nuts and bolts tight to be sure the equipment is in safe working condition.
2. Never tamper with safety devices. Check their proper operation regularly.
3. Keep machine free of grass, leaves, or other debris build-up.
4. If you strike a foreign object, stop, remove the safety key and inspect the machine. Repair, if necessary, before starting.
5. Never make any adjustments or repairs with the motor running.
6. Check grass catcher components and the discharge guard frequently and replace with manufacturer's recommended parts, when necessary.
7. Mower blades are sharp. Wrap the blade or wear gloves, and use extra caution when servicing them.
8. Maintain or replace safety and instruction labels, as necessary.

BATTERY & CHARGER

 Lithium-Ion rechargeable batteries require routine maintenance and care in their use and handling. Read and follow the guidelines in this document to safely use Lithium-Ion batteries and achieve the maximum battery life span.

Overview

1. Do not leave batteries unused for extended periods of time, either in the product or in storage. When a battery has been unused for 6 months, check the charge status and charge or dispose of the battery as appropriate.
2. The typical estimated life of a Lithium-Ion battery is about charge cycles. One charge cycle is a period of use from fully charged, to fully discharged and fully recharged again. Use a two to three year life expectancy for batteries that do not run through complete charge cycles.
3. Rechargeable Lithium-Ion batteries have a limited life and will gradually lose their capacity to hold a charge. This loss of capacity (aging) is irreversible. As the battery loses capacity, the length of time it will power the product (cutting time) decreases.
4. Lithium-Ion batteries continue to slowly discharge (self-discharge) when not in use or while in storage. Routinely check the battery's charge status.

BATTERY MAINTENANCE

1. Routinely check the battery's charge status.
2. Carefully monitor batteries that are approaching the end of their estimated life.
3. Consider replacing the battery with a new one if you note either of the following conditions:
 - The battery run time drops below about 80% of the original run time
 - The battery charge time increases significantly.
4. If a battery is stored or otherwise unused for an extended period, be sure to follow the storage instructions. If you do not follow the instructions, and the battery has no charge remaining when you check it, consider it to be damaged. Do not attempt to recharge it or to use it. Replace it with a new battery.

STORAGE

1. Charge or discharge the battery to approximately 50% of capacity before storage.
2. Charge the battery to approximately 50% of capacity at least once every six months.
3. Store the battery at temperatures between 40°F (5 °C) and 68°F (20 °C)

NOTE: The battery self-discharges during storage. Higher temperatures reduce the battery storage life.

HANDLING PRECAUTIONS

1. Do not disassemble, crush or puncture a battery.
2. Do not short the external contacts on a battery.
3. Do not dispose of a battery in fire or water.
4. Do not expose a battery to temperatures above 140 °F (60 °C)
5. Keep the battery away from children.
6. Avoid exposing the battery to excessive shock or vibration.
7. Do not use a damaged battery.

BATTERY & CHARGER

TRANSPORTATION

1. Always check all applicable local, national and international regulations before transporting a Lithium-Ion battery.
2. Transporting an end-of-life, damaged or recalled battery may, in certain cases, be specifically limited or prohibited.

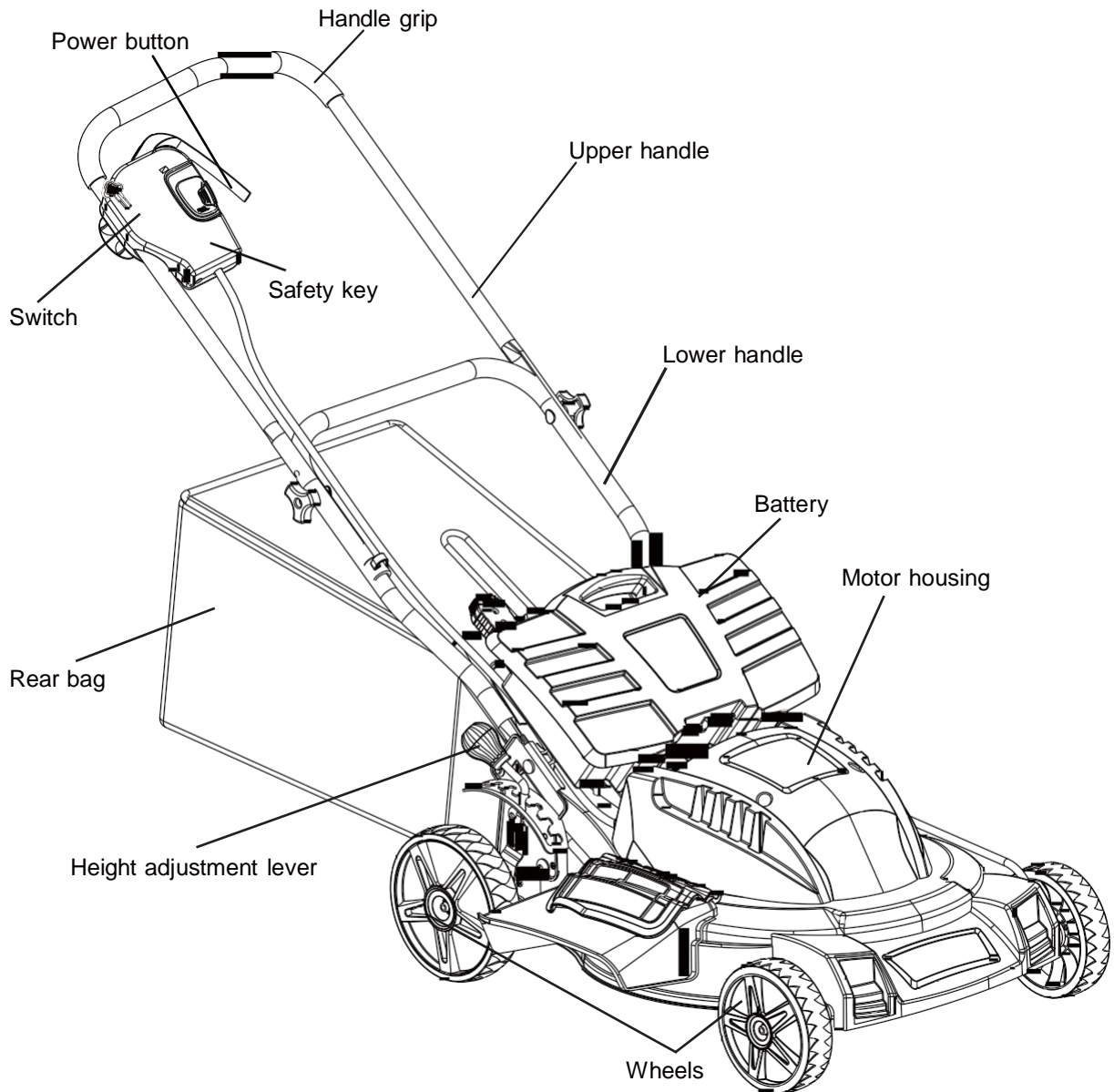
DISPOSAL AND RECYCLING

1. Lithium-Ion batteries are subject to disposal and recycling regulations that vary by country and region. Always check and follow your applicable regulations before disposing of any battery.
2. Many countries prohibit the disposal of waste electronic equipment in standard waste receptacles.

KNOW YOUR PRODUCT

Read this owner's manual and safety rules carefully before operating the mower. Compare the illustration below to the mower in order to become familiar with the location of the various controls and adjustments. Save this manual for future reference.

Fig.1



ASSEMBLING YOUR MOWER

Parts List

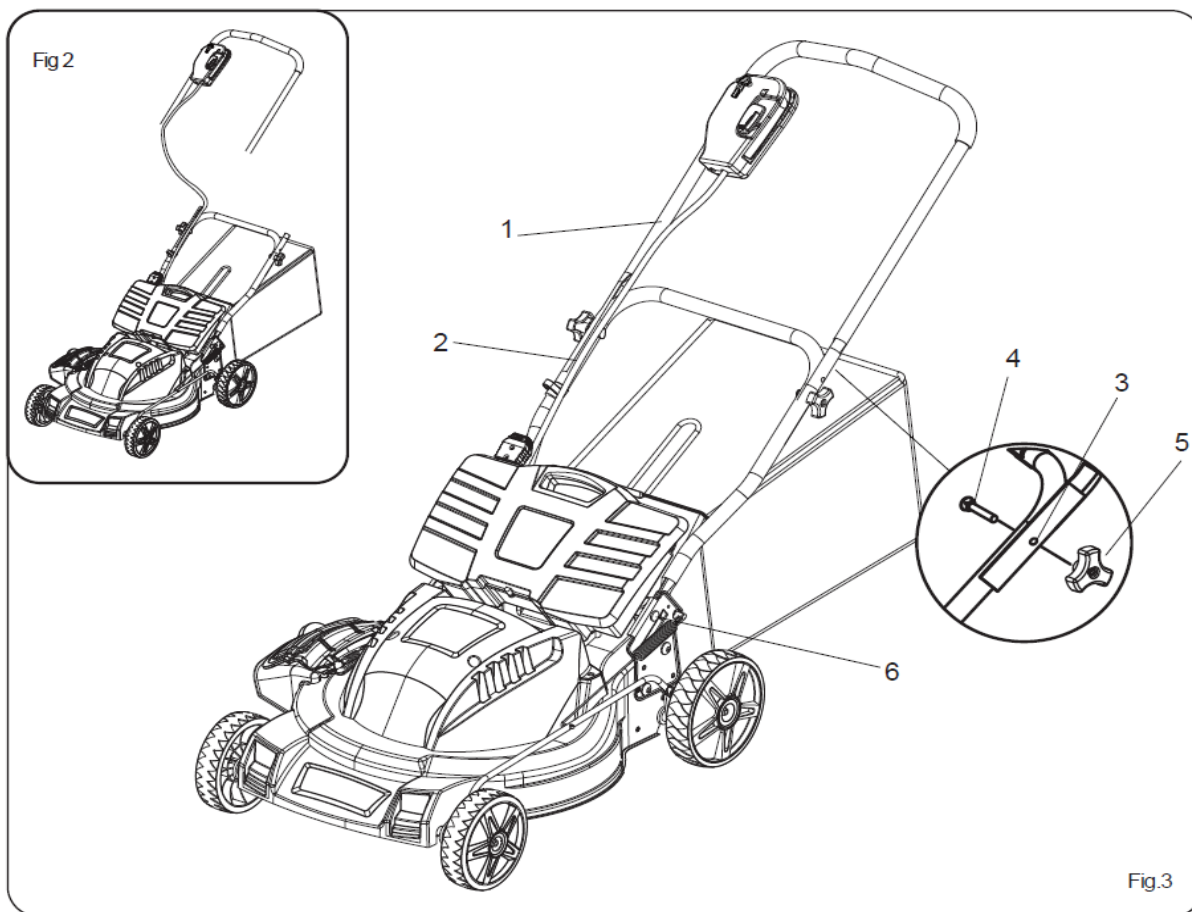
- Mulch plug (Installed at the rear of the mower at the factory)
- Grass catcher bag
- Side discharge chute
- 36V Battery (Pre-installed at the factory)
- Battery Charger
- Manual

Note:

- Carefully remove the parts from the box.
- Inspect the parts carefully in order to verify that no breakage or damage occurred during shipping.
- Do not discard the packing material until all parts have been examined.

ASSEMBLING THE HANDLE

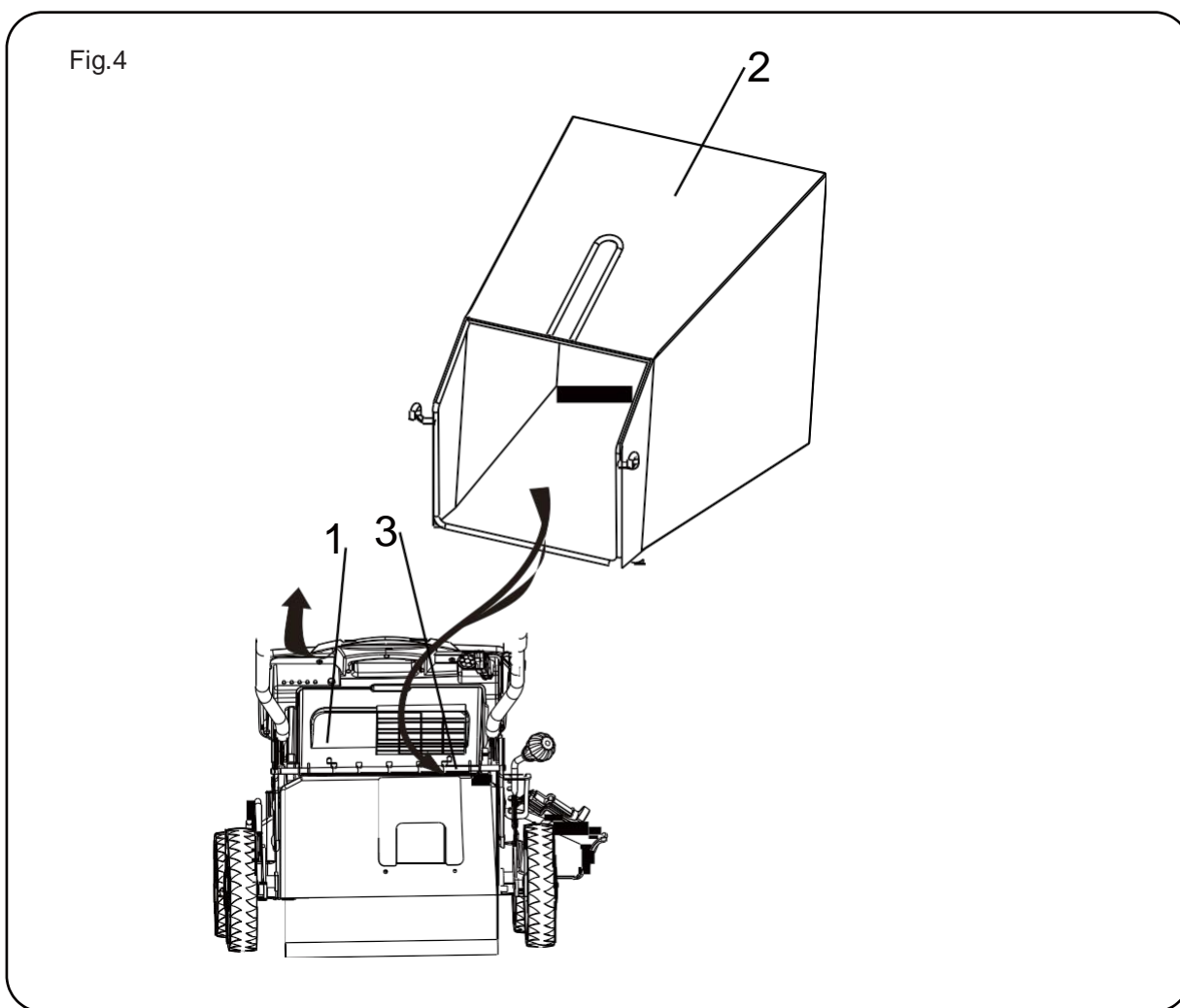
1. Remove any packing material which may be between the upper and lower handles for shipping purposes.
2. Pull up and back on the upper handle to raise the handle into the operating position. Make certain the lower handle is seated securely into the handle mounting bracket (see Fig. 2).
3. Align the holes (3) between the upper handle (1) and lower (2) handles. Insert the bolts (4) and tighten them with the wing nuts (5) provided.
4. Secure the lower handle to the bracket with the handle knob (6) in each side (Fig. 3).



ASSEMBLING YOUR MOWER

INSTALLING THE GRASS CATCHER BAG (see Fig.4)

1. REMOVE SAFETY KEY AND WAIT FOR BLADE TO COME TO A COMPLETE STOP.
2. Lift the chute cover (1).
3. While holding up the cover (1), place the grass catcher bag hanger hooks (2) into the opening on the chute cover (1) to allow the hanger hooks to attach to the rod (3) which secures the chute cover.



NOTE: For optimal performance empty grass bag often during use. A full grass bag will inhibit performance of the mower and collection of grass clippings.

ASSEMBLING YOUR MOWER

INSTALL THE SIDE DISCHARGE CHUTE (see Fig.5)

This mower has 3 different functions - mulch, side discharge and rear bag. If you wish to discharge the clippings rather than mulch, perform these steps.

1. REMOVE SAFETY KEY AND WAIT FOR BLADE TO COME TO A COMPLETE STOP.
2. Lift the side discharge cover (1).
3. Align the grooves on the discharge chute (2) with the pins on the underside of the discharge cover (1).
4. Lower the discharge chute (2) until the hooks on the mower deck are secured in the openings in the discharge chute (2).
5. Release the side discharge cover (1).

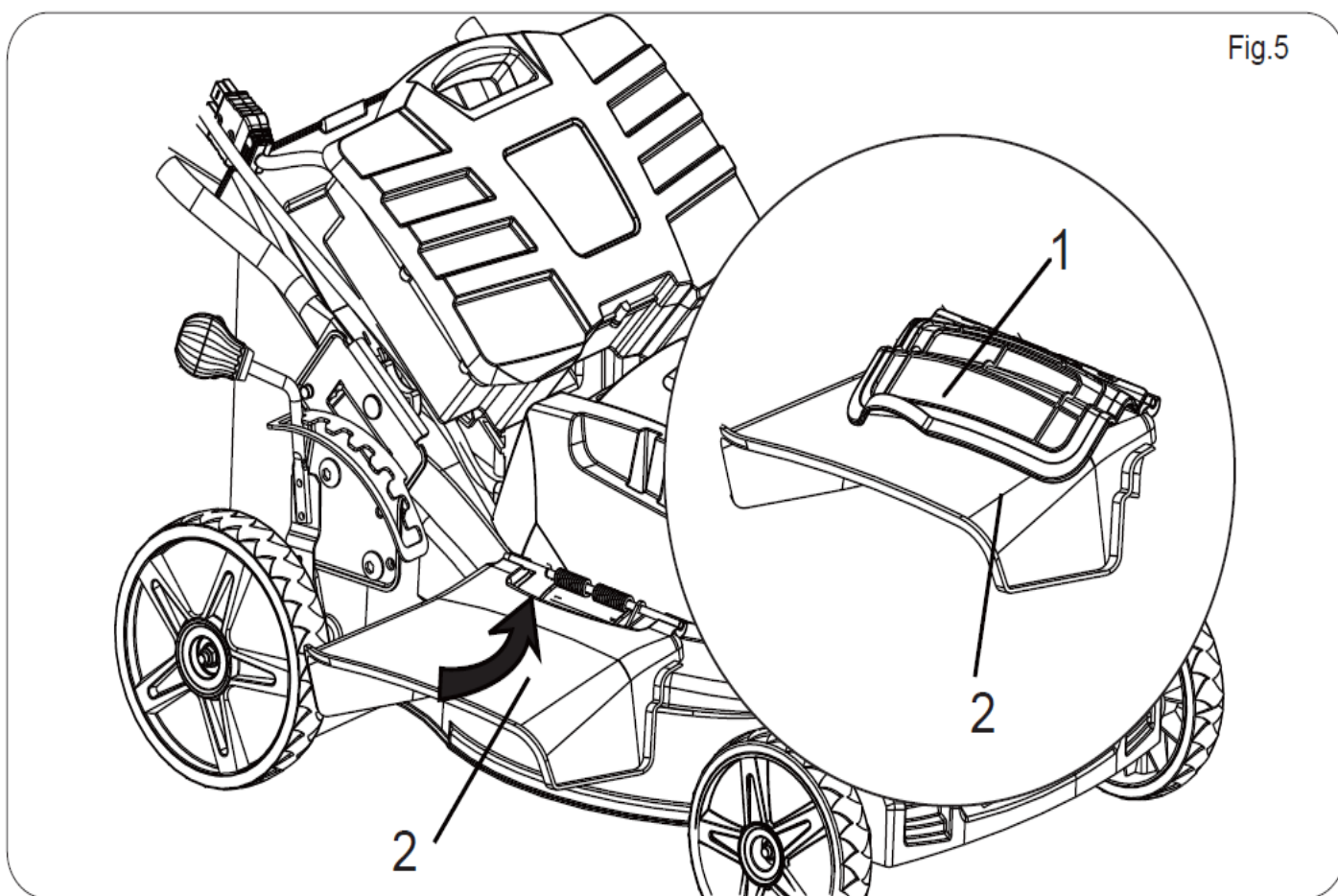
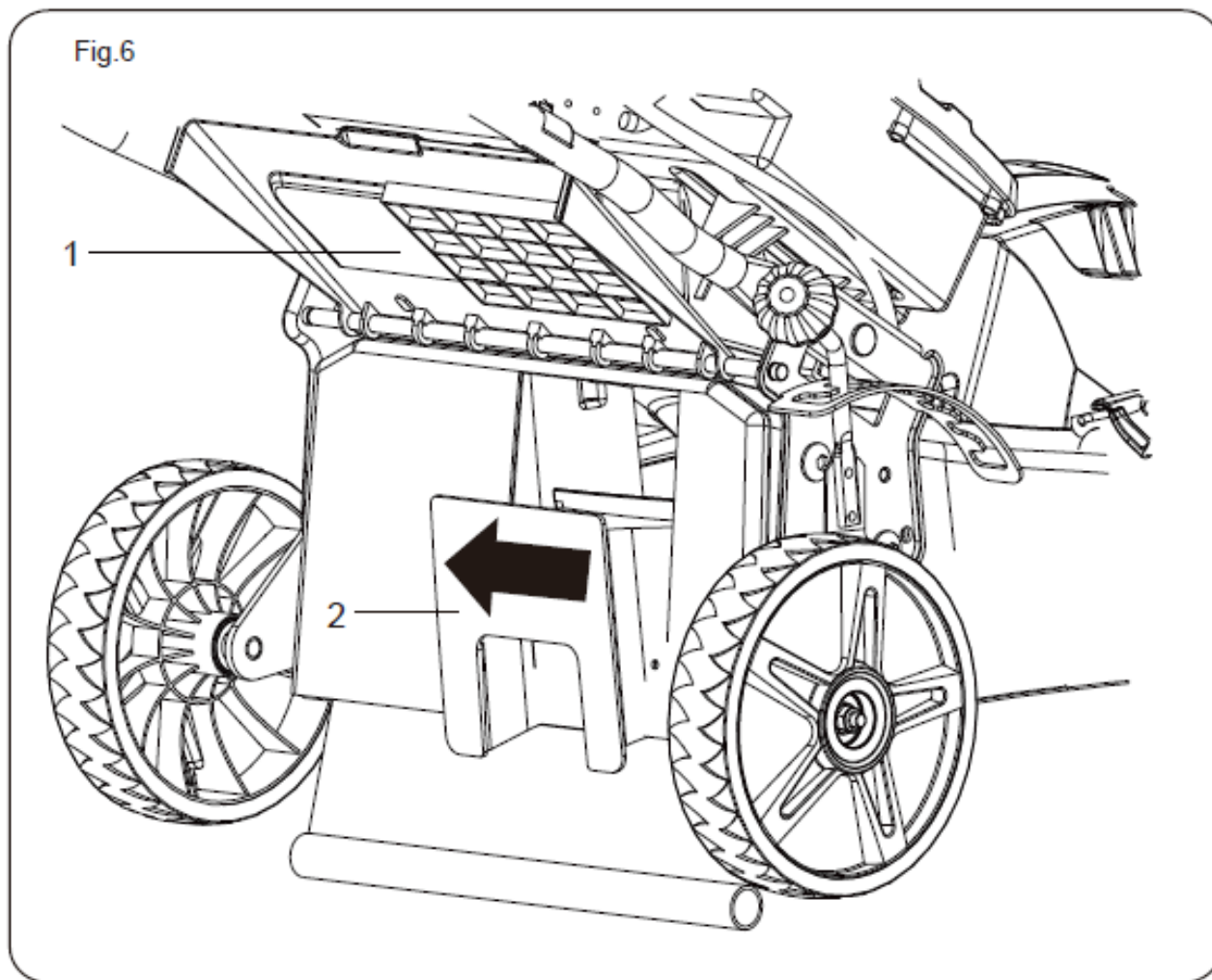


Fig.5

ASSEMBLING YOUR MOWER

INSTALLATION OR REMOVAL OF THE MULCH PLUG (see Fig.6)

1. REMOVE SAFETY KEY AND WAIT FOR BLADE TO COME TO A COMPLETE STOP.
2. To remove the mulch plug lift the chute cover (1) and pull out on the handle.
3. The mulch plug (2) is inserted on an angle so it will require some force when removing.

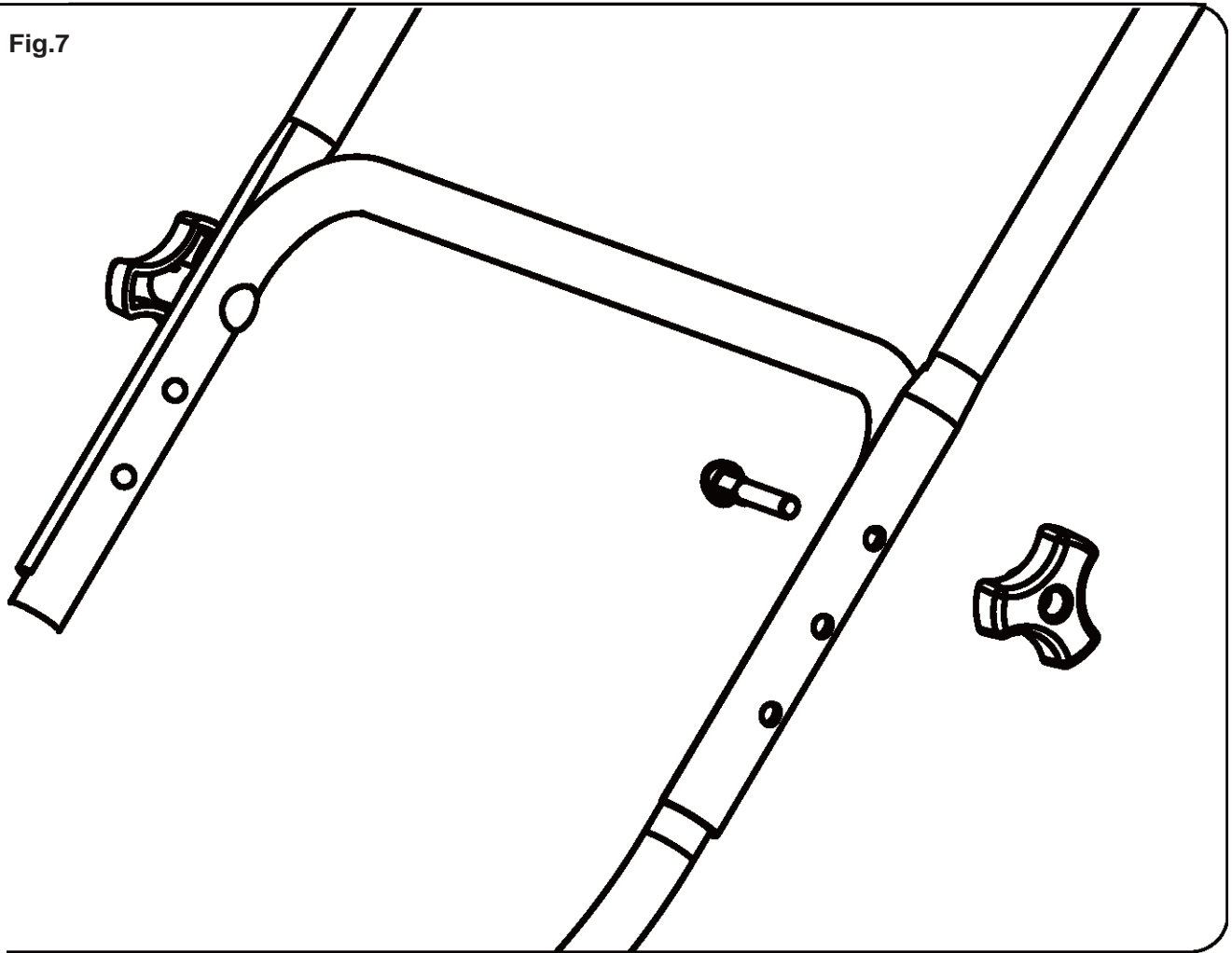


ASSEMBLING YOUR MOWER

ADJUST THE UPPER HANDLE HEIGHT (see Fig.7)

1. Loosen the upper handle knob.
2. Adjust the handle to the most comfortable of the 3 positions.
3. Tighten the upper handle SECURELY.

Fig.7



OPERATING YOUR MOWER

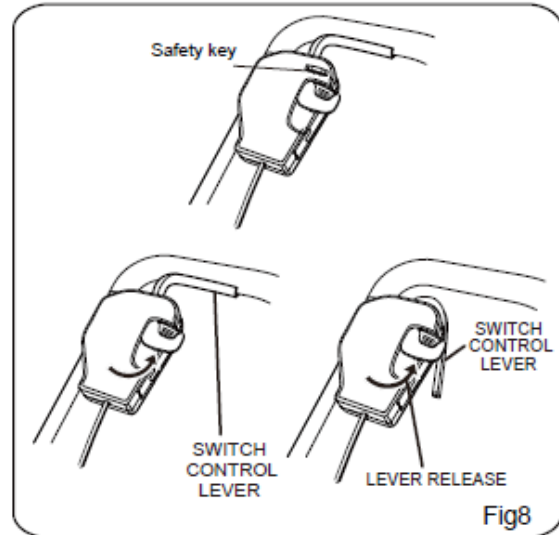
TO START & STOP THE MOWER:

Carefully follow the illustration below, in order, when starting or stopping the mower. (see Fig.8)

STARTING / STOPPING THE MOWER

See Fig 8

1. For the proper operation of this lawn mower, you need to insert the safety key in position, then the lawn mower can be operated by moving the lever release first to make the switch control lever available, then hold the switch control lever for operation.
2. To stop the lawn mower, just release the switch control lever.
3. If your lawn mower is not used for a while, pull out the safety key, then the machine cannot be operated by holding the switch control lever.



⚠ CAUTION: Do not attempt to override the operation of the safety key or lever.

⚠ WARNING: The operation of any mower can result in foreign objects being thrown into the eyes, which can cause severe eye damage. Always wear safety glasses while operating the mower and while performing any adjustments or repairs.

⚠ WARNING: Ensure that other people and pets remain at least 50 ft.(15m) away when the mower is in use.

INSPECT THE CUTTING AREA

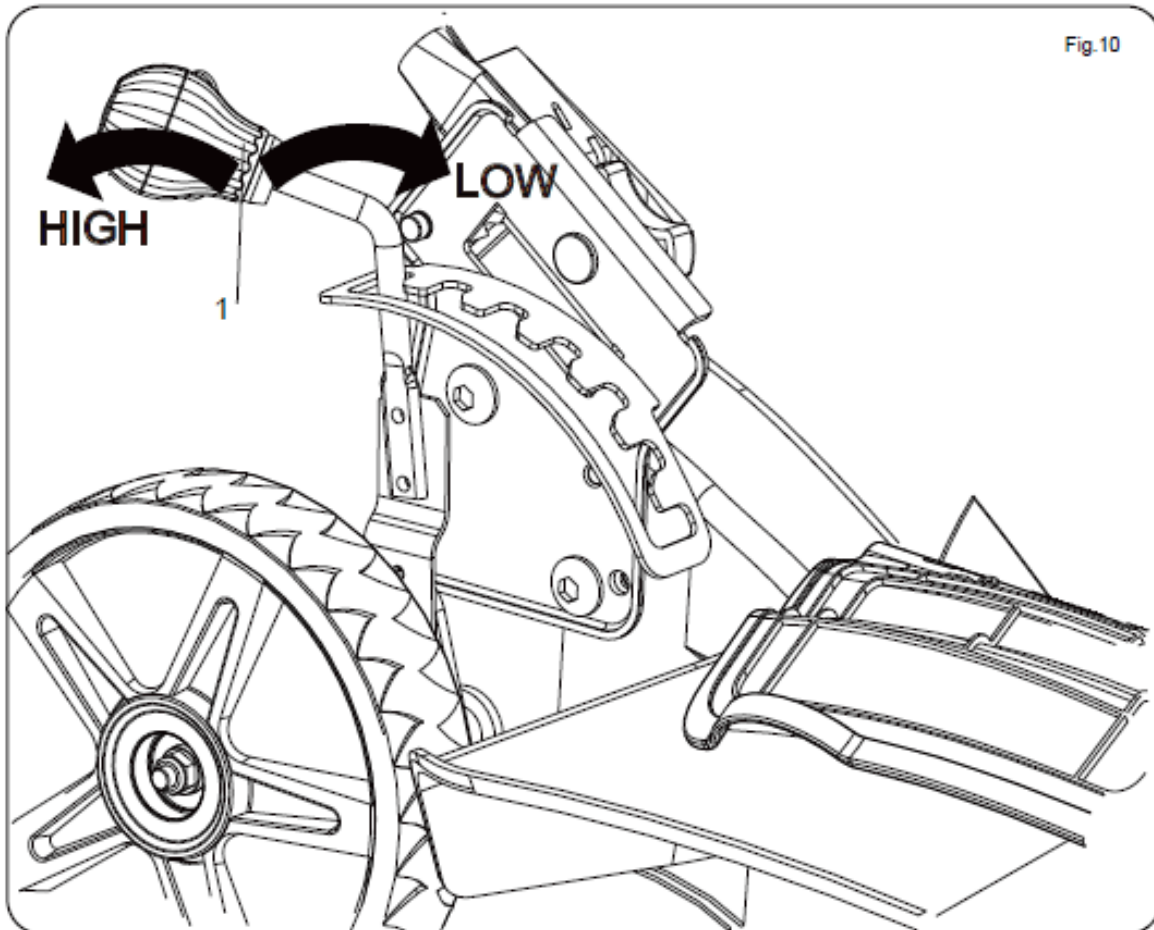
Remove all stones, sticks, wire, bones, and other debris that might be thrown by the rotating blades.

NOTE: This mower is equipped with an internal circuit protector.

OPERATING YOUR MOWER

ADJUST THE CUTTING HEIGHT (see Fig.10)

1. Simply depress the lever (1) towards the wheel and move to desired position. This sets all wheels to the same position.
2. To raise the height, pull the height adjustment lever from the current stop position towards the back of the mower.
3. To lower the height, pull the height adjustment lever from the current stop position towards the front of the mower.



7-Position Height Adjustment			
1.	1-3/4 in.	5.	3 in.
2.	2 in.	6.	3-1/4 in.
3.	2-1/4 in.	7.	3-3/4 in.
4.	2-1/2 in.		

OPERATING YOUR MOWER

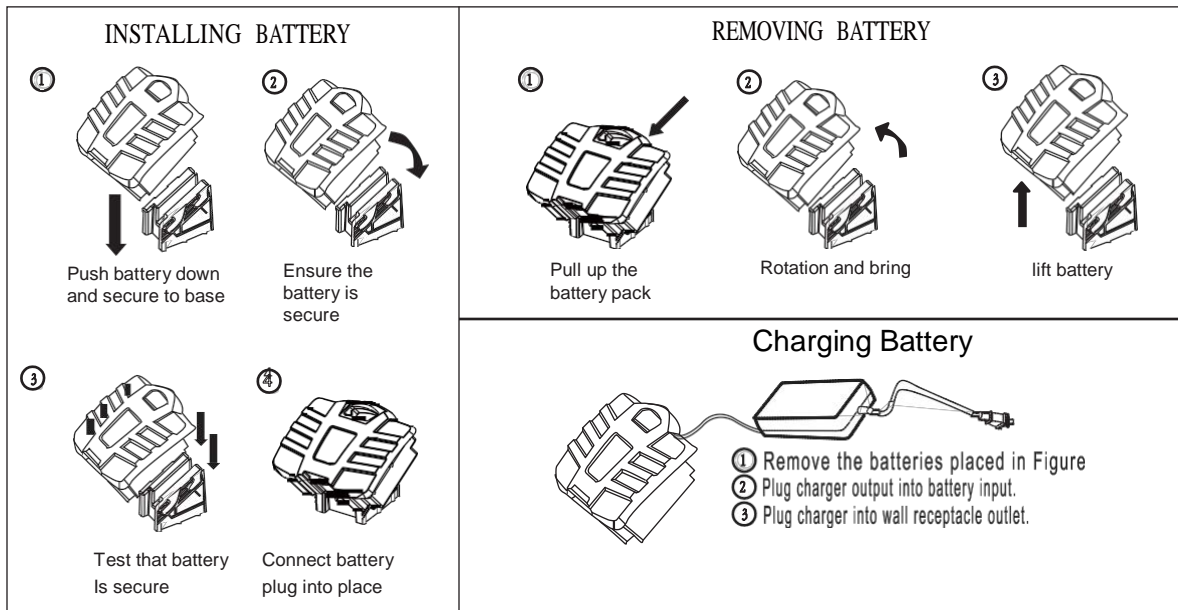
CHARGING PROCEDURE

Note: The battery can be charged in or out of the mower. The charger that is supplied with this mower is a specially designed 2-stage charger.

Step 1: The red light will light up during the recharge cycle.

Step 2: The green light will light up when the battery is fully charged.

1. Remove the jack cover.
2. Plug the charger connector into the jack on the battery.
3. Insert the 110 V plug from the charger into a functioning electrical outlet.
4. The red light on the charger should come on, which indicates that the charger is working and the battery is being charged. The red light will go out and the green light will come on when the battery is completely charged (it takes approximately 3-4 hours to charge a fully discharged battery).



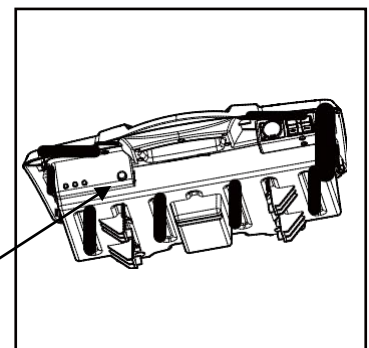
WARNING: Do not store battery in temperatures lower than 32° F (0° C)

BATTERY USE

NOTE: If the switch does not reengage or the mower does not run when the battery is installed:

Push the Battery Capacity Indicator (BCI) switch, which is located on the back of the battery. The lights will indicate the battery's capacity, according to the following chart. Ensure that the battery has a proper charge.

NOTE: IF the mower stops working during use, it may have experienced a power overload. To restart...Release the Control Switch Lever, wait a few seconds, then restart the machine by once again engaging the Control Switch lever.



Lights	capacity
Green Lights	The battery is at 65% to full capacity
Yellow Light	The battery is at 45% to 65% capacity and requires charging soon
Red Light	The battery is at 20% to 45% capacity and requires charging

Green Yellow Red

BCI switch

OPERATING YOUR MOWER

⚠ WARNING: Do not mow a slope that has an angle of greater than 15° (a rise of approximately 2-1/2 ft. [75 m] every 10 ft. [3m]). Mow across the face of a slope, and never up and down.

MOWING TIPS

NOTE: A sharp blade will greatly enhance the performance of the mower, especially when cutting high grass.

Be sure to check the blade and to sharpen it at least once per year, as described in the Maintenance section

- Verify that the lawn is free of stones, sticks, wires, and other objects that could damage the blades or the motor.

These objects could be accidentally thrown by the mower in any direction, and could cause serious personal injury to the operator and to others.

- In order to prevent electric shock, do not operate the mower in damp or wet conditions.
- Do not mow in circles. Travel back and forth across the lawn.
- When cutting thick grass, reduce walking speed in order to allow for a more effective cut and a proper discharge of the clippings. For a healthy lawn, always cut off one-third or less of the total length of the grass. The average lawn should be approximately 1-1/2 to 2 in. (3.8 to 5 cm) long during cool months, and more than 2 in. (5 cm) long during hot months. If there is growth, the lawn should be cut in the fall.

MULCHING TIPS

NOTE: INSPECT THE AREA WHERE THE MOWER IS TO BE USED AND REMOVE ALL STONES, STICKS, WIRE AND OTHER DEBRIS THAT MIGHT BE THROWN BY THE ROTATING BLADE.

1. Release the switch to turn the mower OFF when crossing any graveled area (stones can be thrown by the blade).
2. Set mower to the highest cutting height when mowing on uneven ground or in tall weeds.
3. For effective mulching, do not cut wet grass, because it tends to stick to the underside of the deck, preventing proper mulching of grass clippings. New or thick grass may require a higher cut. The ground speed should be adjusted to the condition of the lawn. If mowing has been delayed and the grass has been allowed to grow longer than 4 in. (10 cm), mow the lawn twice in order to reduce the grass height to a maximum of 3-1/4 in. (8.3 cm).
4. Walk at a steady pace. Overlap the cutting rows. Do not let the grass get too tall. If the grass gets too long, start at the highest cutting position and work down to the desired cutting height.

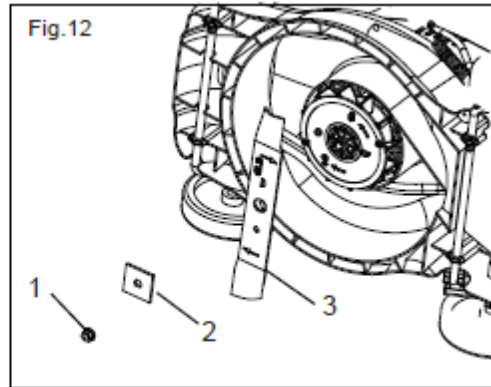
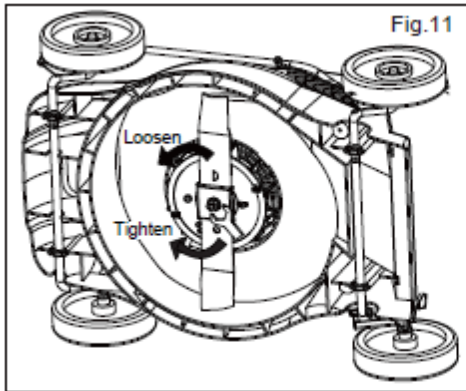
WARNING: If you strike a foreign object, stop the motor and remove safety key. Thoroughly inspect the mower for any damage. Repair any damage before operating the mower. Excessive vibration of the mower during operation is an indication of damage. Thoroughly inspect the mower and repair any damage before operating the mower. With a 15-mm wrench or socket, turn the blade nut "CLOCKWISE" to secure the blade.

CUTTING BLADE REPLACEMENT (see Fig.11 & Fig.12)

⚠ WARNING: Always protect your hands by wearing heavy gloves and/or wrapping the cutting edges with rags or other materials when performing any maintenance on the blades.

1. RELEASE THE SWITCH LEVER TO TURN THE MOWER OFF, WAIT FOR THE BLADE TO COME TO A COMPLETE STOP, AND THEN REMOVE THE BATTERY
2. While wearing leather padded gloves, wedge a block of wood between the blade and the mower deck in order to prevent the blade from turning when the nut is being removed.
3. Using a 15-mm wrench or socket, loosen the blade nut (1) and remove the blade (4). Turn the nut "COUNTERCLOCKWISE" to loosen it and "CLOCKWISE" to tighten it (this is a reverse rotation nut).
4. Remove the blade nut (1), the square washer (2) the insulator washer (3), and the blade.
5. To re-install the blade, position the blade with the cutting edges toward the ground. Assemble the blade nut, the square washer, and the insulator washer as shown in following. Using a 15-mm wrench or socket, turn the blade nut "CLOCKWISE" to secure the blade.

OPERATING YOUR MOWER



NOTE: Be sure to replace the parts in the exact order in which they were removed. When installing the cutting blade, verify that it is installed with the curved ends pointing toward the mower deck.

CLEAN THE MOWER

WARNING: To reduce the risk of electric shock, do not expose the mower to water.

The underside of mower deck should be cleaned after each use as grass clippings, leaves, dirt and other debris will accumulate causing rust and corrosion.

Remove any buildup of grass and leaves on or around the motor cover (do not use water). Wipe the mower clean with a dry cloth occasionally.

If debris build up on the underside of the unit while using, stop the motor and remove the safety key. Tilt the mower forward, or on its side and scrape it clean with an appropriate tool.

STORAGE

The following steps should be taken to prepare the lawn mower for storage.

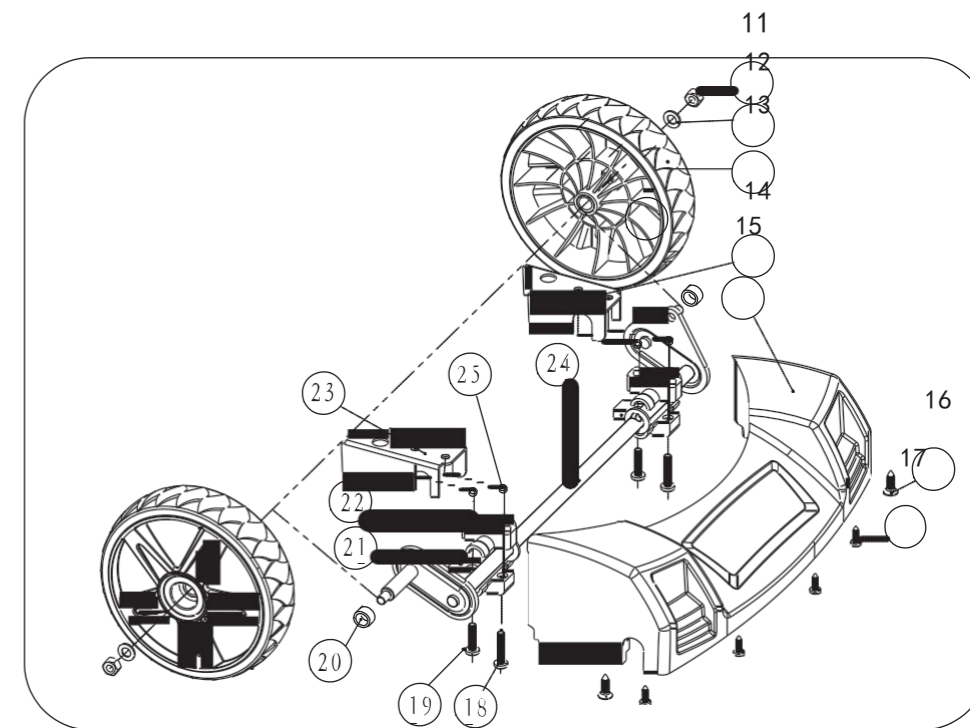
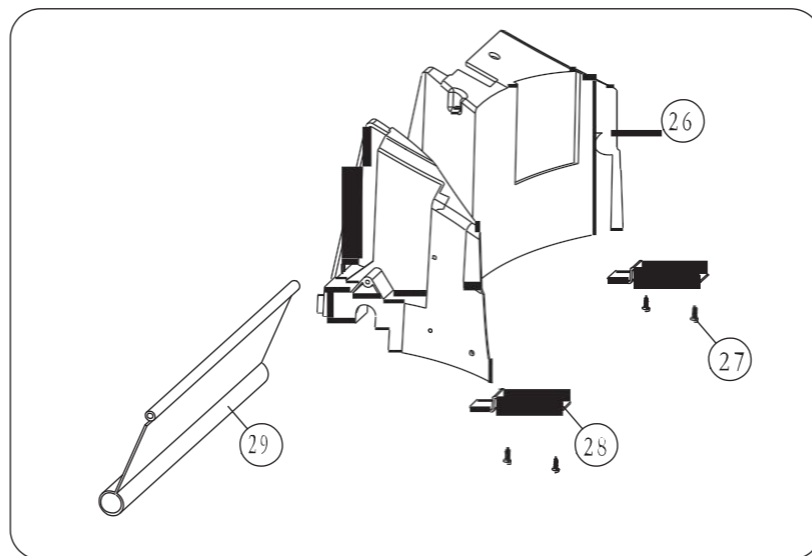
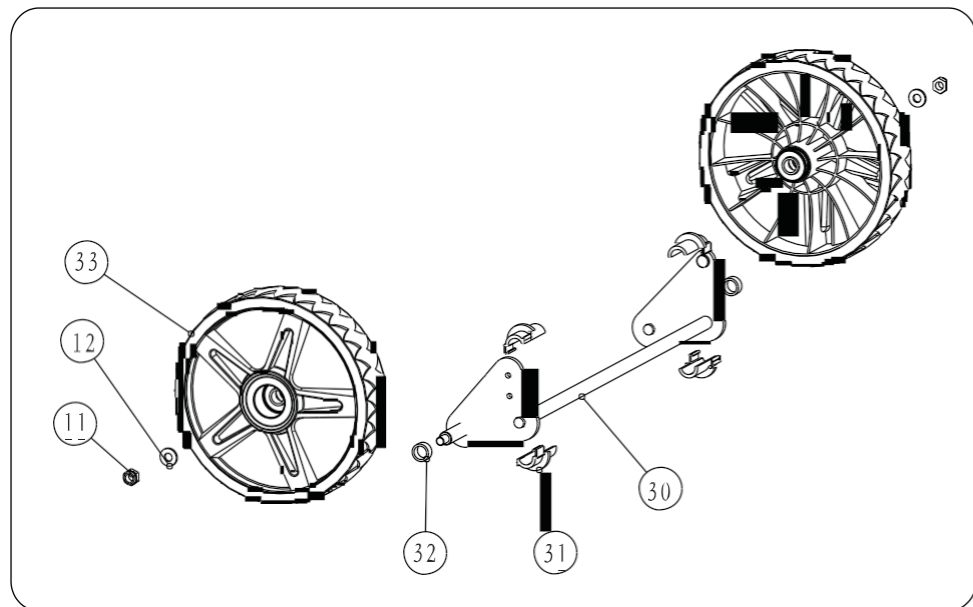
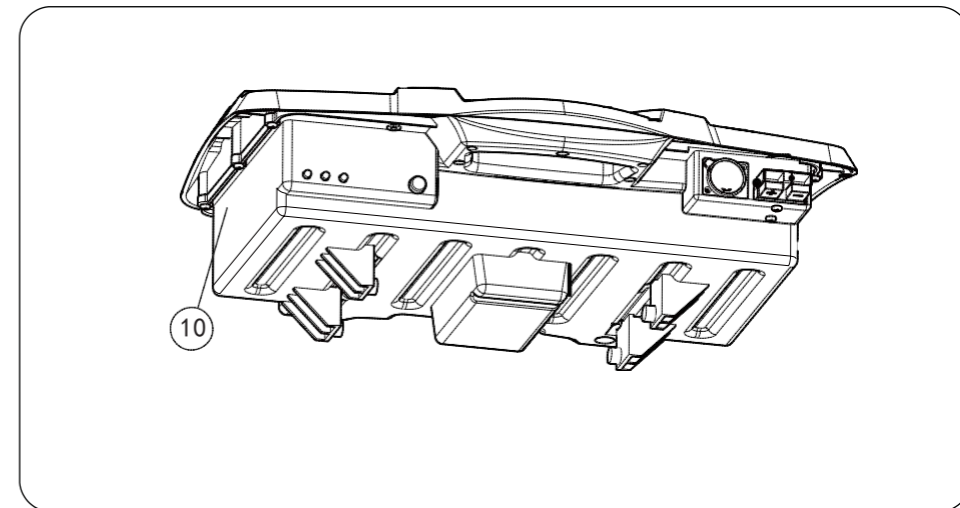
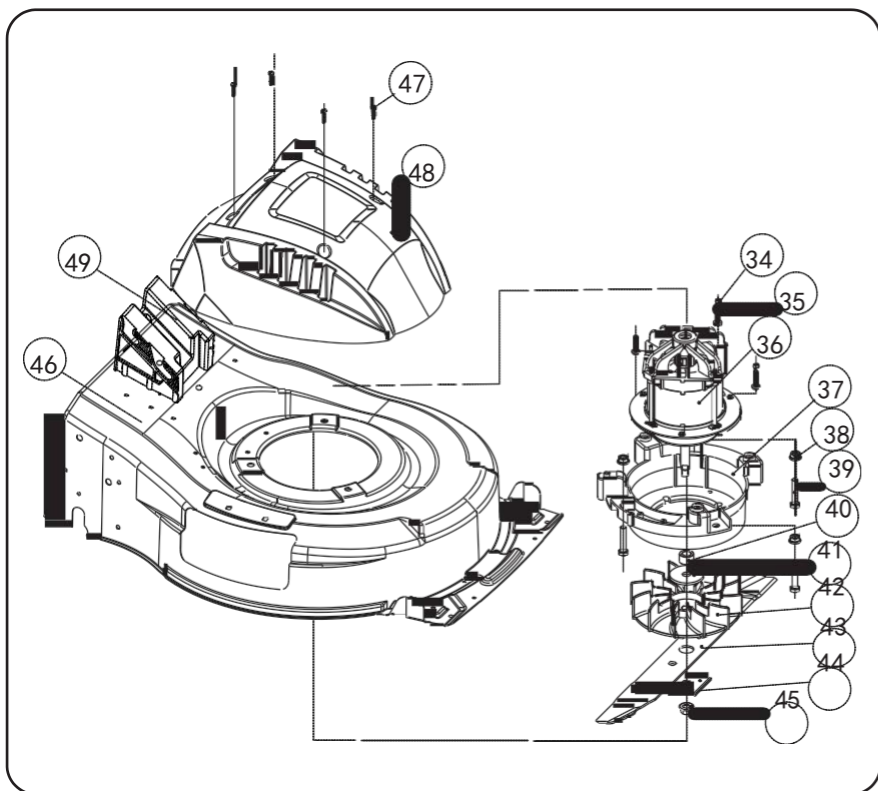
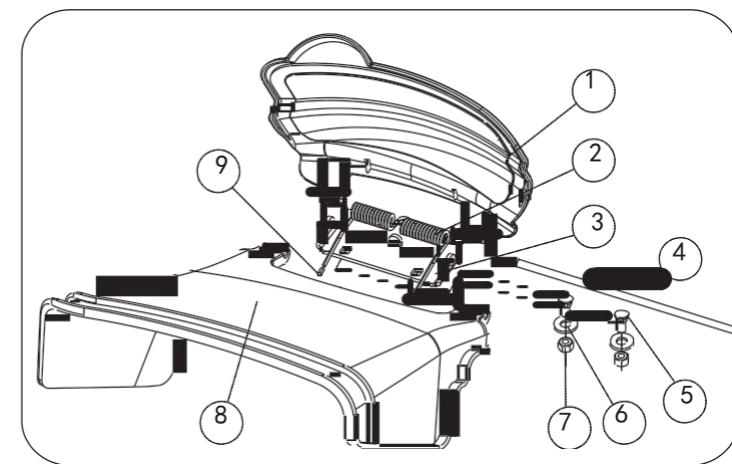
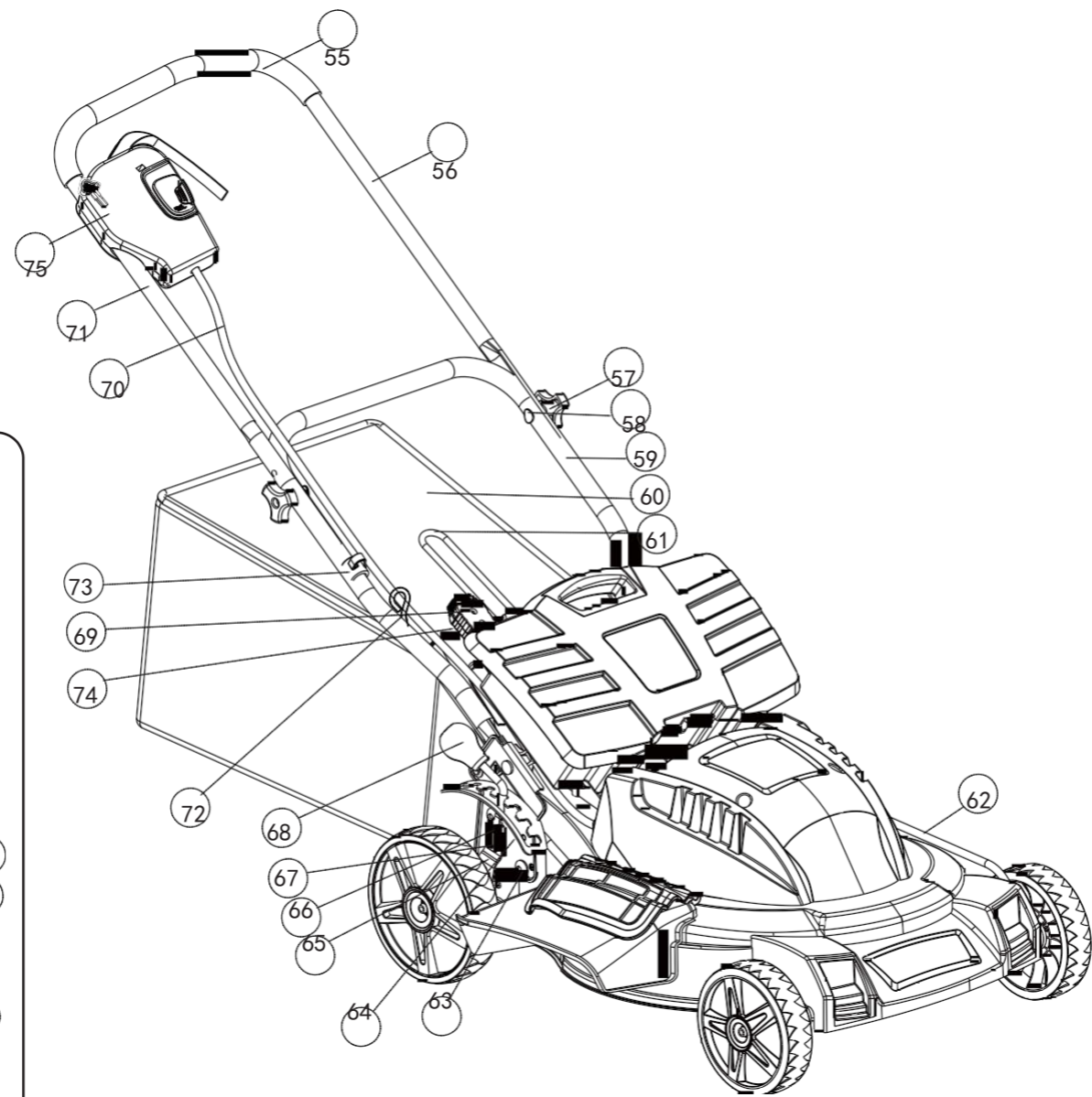
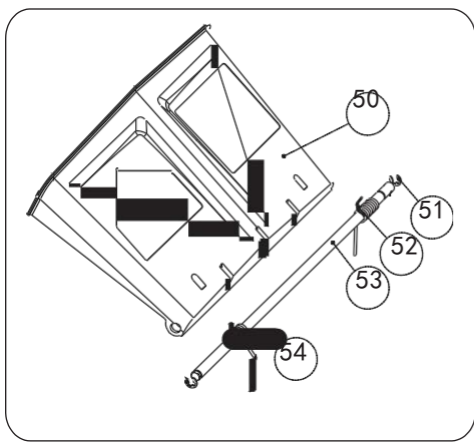
- Make certain the safety key is removed.
- Clean mower as instructed in previous section.
- Inspect and replace/sharpen blade, if required. Refer to the Maintenance section.
- Store mower in a dry, clean area. Do not store next to corrosive materials, such as fertilizer and rock salt.
- Store mower indoors, in a cool, dry place, out of the reach of children. Do not cover lawn mower with a solid plastic sheet. Plastic coverings trap moisture around the mower causing corrosion.

The handle may be folded away completely for storage.

- Loosen the handle knobs on the sides of the handle and fold the upper handle down.
- Loosen the handle knobs, pull outwards on each side of the lower handle and lift the sides of the lower handle past the edges of the handle mounting brackets. Fold the lower handle forward. Make sure not to bend or kink the power cord.

KNOW YOUR PRODUCT

1. When servicing the mower, use only replacement parts that are available from the manufacturer. In order to obtain replacement parts, call the toll-free helpline. The use of parts that do not meet the original equipment specifications may lead to improper performance and may compromise safety.
2. Before cleaning, repairing, or inspecting, verify that the blade and all moving parts have come to a complete stop and remove the safety key. In order to prevent accidental start-ups, remove the safety key when the mower is not in use.
3. Remove the battery when making any adjustments or when any of the four wheels must be lifted off the ground.
4. Keep the handles dry, clean, and free of oil and grease.
5. In order to reduce the risk of fire, keep the motor free of grass, leaves and debris build-up.
6. Frequently check the blade and motor mounting bolts for proper tightness. Visually inspect blade for damage (e.g.: bent, cracked, or worn).
7. For best and safest performance, maintain the mower with care. Keep the mower blade sharp and clean. Mower blades are sharp and can cut. Wrap the blades or wear gloves and use extra caution when servicing.
8. Keep all nuts, bolts and screws tight in order to be sure that the equipment is in safe working condition.
9. Never tamper with safety devices. Check them regularly for proper operation.
10. After striking a foreign object, stop the motor and remove the safety key. Thoroughly inspect the mower for any damage. Repair any damage before operating the mower.
11. Lawn mower components are subject to wear and damage, which could expose moving parts or allow objects to be thrown. As a safety precaution, frequently check components and replace those that show signs of wear or damage.
12. When it is not in use, store the mower indoors in a dry area, with the safety key removed and out of the reach of children.



PARTS LIST

Item No.	Part No.	Qty	Description
1	8411401	1	Side cover
2	8320801	1	Slide cover spring
3	8331801	1	Slide bracket
4	8320201	1	Slide axis
5	8220601	2	Round Head Square Neck boltM6*15
6	8240102	7	Washer ϕ 6
7	8230201	11	Hex Nut M6
8	8411301	1	Slide opening
9	8420201	4	Rubber spring sleeve
10	8610801	1	Battery Pack
11	8220502	4	Hex lock nut M6
12	8240112	7	Washer ϕ 8
13	8410701	2	7" wheel assembly
14	8331001	1	Left support
14	8410201	1	Front cover
16	8228901	2	"Phillips pan head self tapping screw ST6.3*20-C"
17	8221701	6	Phillips deep head self tapping screw ST4.8*18-C
18	8228908	2	Phillips pan screw M6*40
19	8228701	2	Phillips pan screw M6*30
20	8321002	2	Front axis sleeve
21	8410301	2	Front wheel lower press board
22	8410401	2	Front wheel up press board
23	8331101	1	Right support
24	8330101	1	Front wheel assembly
25	8230201	11	Hex locknut M6
26	8411501	1	Rear board
27	8220801	19	"Phillips pan head self tapping screw ST4.8*18-F"
28	8330501	2	Rear axis press board
29	8430201	1	Rear block leather
30	8330301	1	Rear axis assembly
31	8419101	4	Rear sleeve
32	8321101	2	Rear wheel sleeve
33	8410801	2	8" wheel assembly
34	8230201	11	Hex lock nut M6
35	8227502	3	Hex flange nut M8*20
36	8131431	1	DC motor(36V)
37	8410601	1	Motor seat
38	8220302	3	Hex bolt M6*20
39	8221801	3	Hex bolt M6*25
40	8323001	1	Fan bushing
41	8330401	1	Fan washer
42	8412701	1	Centrifugal fan

PARTS LIST

Item No.	Part No.	Qty	Description
43	8331212	1	19" blade
44	8331901	1	Blade block plate
45	8220102	1	Lock axis nut
46	8331201	1	Housing assembly
47	8220901	25	Phillips pan head self tapping screw ST4.2*16-F
48	8410101	1	Housing Cover
49	8412101	1	Battery bracket
50	8410303	1	Rear cover(new appearance)
51	8247501	2	Opening lock ring ϕ 7
52	8321001	1	Rear cover left spring
53	8320401	1	Rear cover axis
54	8322901	1	Rear cover right spring
55	8430101	1	Sponge sleeve
56	8320601	1	Up handle
57	8410501	4	Knobs
58	8220202	2	Push rod bolt M8*8
59	8320701	1	Lower handle
60	8440201	1	Grass bag
61	8321401	1	Grass bag bracket
62	8330701	1	Connection par assembly
63	8220501	4	Half hexagon head bolt M10*20
64	8330801	1	Right adjustment plate assembly
65	8331601	1	Spring board
66	8220401	4	Internal
67	8321301	1	Internal Hexagon bolt M5*14
68	8419001	1	Adjustment height handle
69	8412401	1	Plug up cover
70	8641101-1	1	Power cord
71	8320601	1	Up handle
72	8330201	1	Threaded ring
73	8412501	1	Hang hook
74	8413601	1	Plug below cover
75	8110102	1	Switch Assembly

WARRANTY

ONE (1) Year RESIDENTIAL USE Limited Warranty – MODEL PMLI-20

Driven by Solar Inc., maker of the Recharge Mower®, warrants to the original retail purchaser that this Recharge Mower® product is free from defects in material or workmanship under normal use and maintenance from the date of retail purchase for the applicable Warranty Period. Certain components are excluded from coverage and other limitations apply, as described in this document. Driven by Solar Inc. will repair or replace at its discretion, any defective product or part covered by the Limited Warranty, free of charge at any authorized Driven by Solar Inc. Service Provider using original OEM Recharge Mower® replacement parts, subject to the limitations and exclusions described below. Driven by Solar Inc. does not offer an over-the-counter exchange program or provide for refund.

THIS LIMITED WARRANTY IS THE SOLE EXPRESS WARRANTY PROVIDED BY DRIVEN BY SOLAR INC. ANY WARRANTY THAT MAY BE IMPLIED BY LAW (INCLUDING ANY IMPLIED WARRANTY OF FITNESS FOR A PARTICULAR PURPOSE OR USE AND IMPLIED WARRANTY OF MERCHANTABILITY) IS LIMITED TO THE DURATION OF THE APPLICABLE WARRANTY PERIOD UNDER THIS LIMITED WARRANTY. THIS LIMITED WARRANTY MAY BE MODIFIED ONLY BY DRIVEN BY SOLAR INC. SOME STATES DO NOT ALLOW LIMITATIONS ON HOW LONG AN IMPLIED WARRANTY LASTS, SO THE ABOVE LIMITATIONS MAY NOT APPLY TO YOU. THIS LIMITED WARRANTY GIVES YOU SPECIFIC LEGAL RIGHTS AND YOU MAY ALSO HAVE OTHER RIGHTS WHICH MAY VARY FROM STATE TO STATE. THIS WARRANTY IS GIVEN ONLY BY DRIVEN BY SOLAR INC. THE ABOVE REMEDIES ARE THE EXCLUSIVE REMEDIES FOR ANY BREACH OF THIS LIMITED WARRANTY. DRIVEN BY SOLAR INC. AND ITS AFFILIATED COMPANIES SHALL NOT BE LIABLE FOR ANY SPECIAL, INCIDENTAL OR CONSEQUENTIAL DAMAGE, INCLUDING LOST PROFITS RESULTING FROM ANY SUCH BREACH AND ALL SUCH DAMAGES ARE HEREBY DISCLAIMED. SOME STATES DO NOT ALLOW THE EXCLUSION OR LIMITATION OF INCIDENTAL OR CONSEQUENTIAL DAMAGES, SO THE ABOVE LIMITATIONS MAY NOT APPLY TO YOU.

LIMITATIONS AND EXCLUSIONS

1. This Limited warranty does not cover any of the FOLLOWING:

- (a) *Expendable Parts.* This Limited Warranty does not cover general maintenance parts and items (“Expendable Parts”), including without limitation blades and blade adapters, deflectors, cords, tires, labels, and wiring.

2. **Any COMMERCIAL, INSTITUTIONAL, AGRICULTURAL, INDUSTRIAL, INCOME PRODUCING, or RENTAL use will result in No Warranty.**

3. **Owners (your) Responsibilities.** To preserve your rights under this Limited Warranty, you must demonstrate reasonable care and use of the product, including, following the preventative maintenance and storage as prescribed in the enclosed operator’s manual. For example, the following items are the Owner’s responsibility and are not covered by this Limited Warranty:

- a. Set-up and pre-delivery service and any adjustments.
- b. Adjustments after the first (30) thirty days of purchase.
- c. Preventative maintenance as outlined in the operator’s manual. In addition, you must cease using the product immediately upon any failure or damage. The product should be taken to an authorized Recharge Mower® service provider prior to any further use.

4. **Damages resulting from normal aging, wear and tear or neglect are NOT covered.** The Limited Warranty does not cover damage other than that resulting from defects in material or workmanship. The following are NOT considered defects in material or workmanship and therefore are NOT covered.

- (a) Abrasion to mower decks;
- (b) Tire damage or wear,
- (c) Natural discoloration of materials due to ultraviolet light or environmental issues;
- (d) Damage to cutting equipment by wear or contact with rocks, or other non-approved materials and/or structures;

In addition, this Limited Warranty does not cover damages, malfunctions or failures resulting from abuse or neglect of the product related to or including any of the following:

- (e) Failure to provide or perform required maintenance services for either mower or batteries as prescribed in the operator’s manual;
- (f) Abuse, misuse, neglect, modifications, alterations, normal wear, improper servicing, use of unauthorized attachments;
- (g) Pressure cleaning or steam cleaning the product;
- (h) Tampering with engine controller, speed governor or electronic parts or pieces;
- (i) Operation of the unit with improperly installed/removed or modified cutting shields, guards, or safety devices;
- (j) Any excessive dirt abrasives, salt water, moisture, corrosion, rust, varnish or any adverse reaction due to incorrect storage procedures;
- (k) Failures due to improper set up, pre-delivery service or repair service by anyone other than an authorized Recharge Mower® service provider during the warranty period;
- (l) Continued use of product, after initial operational problem or failure occurs;
- (m) If the batteries have been maintained in accordance with operator’s manual but have prematurely failed, a pro-rated adjustment, at the discretion of Driven By Solar Inc., will be applied to the current retail price for replacement of the batteries.

The provisions as set forth in this warranty provide the sole and exclusive remedy arising from the sale. Driven By Solar Inc. shall not be liable for incidental or consequential loss or damage including, without limitation, expenses incurred for substitute or replacement lawn services or for rental expenses to temporarily replace a warranted product.

HOW TO OBTAIN SERVICE

5. **Authorized Recharge Mower® Service Provider.** In order to obtain warranty coverage it is your responsibility (at your expense) to deliver or ship your Recharge Mower® unit to an authorized Recharge Mower® Service Provider and arrange for pick-up or return of your unit after the repairs have been made. If you do not know the location of your nearest authorized Recharge Mower® Service Provider call the Warranty Provider as identified by the card included with this packaging of this product. You may also contact American Warranty Services at 1-866-393-3968 or Driven by Solar Inc., through email at: service@rechargemower.com or through our website at www.rechargemower.com if you have questions concerning this Limited Warranty.

6. **Documentation Required.** You must maintain and present Proof of purchase (including date, product model and serial number) to American Warranty Services for warranty service under this Limited Warranty. Proof of purchase rests solely with the owner-customer.

For Warranty Inquiries, contact:

AMERICAN WARRANTY SERVICES...1-866-393-3968