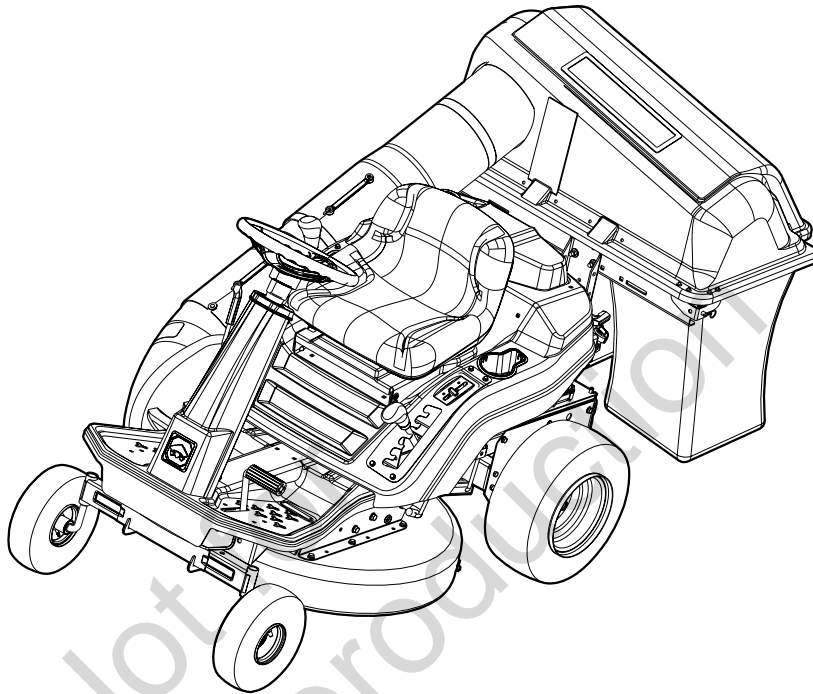


ATTACHMENT OPERATOR'S MANUAL



Twin Bag Catcher for Rear Engine Rider

Mfg. No.	Description
7600192	Twin Bag Catcher



CAUTION: Read and follow all instructions

7105616
Rev.: A

Not for
Reproduction

Table of Contents

Operator Safety	4
Assembly.....	5
Operation	10
Warranty.....	11
Parts List.....	14

NOTE: In these instructions, “left” and “right” are referenced from the operating position.

Not for
Reproduction

Operator Safety

⚠ Read these safety rules and follow them closely. Failure to obey these rules could result in loss of control of unit, severe personal injury or death to you, or bystanders, or damage to property or equipment. The ⚠ triangle in text signifies important cautions or warnings which must be followed.

⚠ General Warnings

- Know the unit's controls and how to stop quickly. **READ THE OPERATOR'S MANUALS.**
- Read and obey all safety decals.
- Only allow responsible adults, who are familiar with the instructions, to operate the unit.
- Disengage the PTO. Shut off the engine and wait for all moving parts to stop before attaching, adjusting, or disconnecting any part of the collection system.
- Check the collection system to make sure it is bolted tightly to the unit.
- **DO NOT** operate the unit without either the entire grass catcher or the deflector in place.
- Turn off the PTO to disengage the blades when not mowing.
- **DO NOT** mow in reverse unless absolutely necessary. Always look down and behind before and while travelling in reverse.
- **DO NOT** turn sharply when travelling alongside a building or any object. Slow down before turning.
- **DO NOT** carry passengers.
- When collection system is removed from the mower deck, the deflector must be properly installed.
- Collector bags are subject to deterioration and wear during normal use. Inspect the bag periodically for tears, holes, or weak spots and replace with a new bag that meets manufacturer's durability standards.
- For added stability and to prevent tipping or loss of control:
 - a. Use reduced speed on uneven ground and when turning corners.
 - b. Reduce loads on hillsides. It is recommended that the collection system be kept only half full when negotiating any slopes. Start mowing on slopes when the collection system is empty.
 - c. Mow up and down the face of slopes; never across the face of any slope.
- **Never operate on slopes greater than 17.6% (10°).**

Safety Decals

Several safety labels are installed on the unit to remind you of important information while you are operating your unit.

All **DANGER, WARNING, CAUTION** and instructional messages on your rider, attachments and mower should be carefully read and obeyed. Personal bodily injury can result when these instructions are not followed. The safety decals below are on your product.

If any decals are lost or damaged, replace them at once. See your local dealer for replacements.

These labels are easily applied and will act as a constant visual reminder to you, and others who may use the equipment, to follow the safety instructions necessary for safe, effective operation.

Attachment Decals



Decal - WARNING Thrown Objects Hazard
Part Number 1732819SM



Decal - WARNING Chute / Deflector Decal
Part Number 7046720SM

Kit Contents *

- | | |
|-------------------------------|-----------------------------------|
| 1 - Instruction Manual | 2 - 3-3/4" Clevis Pins |
| 1 - Catcher Bracket Assembly | 2 - 1-7/8" Hair Pins |
| 1 - Upright Support | 1 - 5/16 x 3/4" Carriage Bolt |
| 1 - Cross Support | 1 - 5/16" Bolt Retainer |
| 2 - Hinge Pivots | 2 - 5/16 x 1" Carriage Bolts |
| 1 - Catcher Cover Assembly | 1 - Rear Bracket |
| 2 - Grass Bag Assemblies | 3 - 5/16" Flat Washers (Large OD) |
| 1 - Catcher Boot Assembly | 3 - 5/16 Wing Nuts |
| 1 - Upper Tube Assembly | 2 - #10 x 5/8" Machine Screws |
| 1 - Lower Tube Assembly | 2 - 3/16 Flat Washers |
| 1 - Hardware Bag containing: | 2 - Mounting Straps |
| 3 - 5/16 x 3/4" Hex Bolts | 2 - #10 Weld Nuts |
| 3 - 5/16" Flange Nuts | 2 - 5/16 x 5/8" Machine Screws |
| 4 - 1/4 x 5/8" Carriage Bolts | 2 - 5/16 Flat Washers (Small OD) |
| 4 - 1/4" Whiz Lock Nuts | 2 - 5/16" Tee-Nuts |
| 2 - 5-5/16" Clevis Pins | |
| 2 - 1-5/8" Hair Pins | |
| 4 - 3/8 x 1" Carriage Bolts | |
| 4 - 3/8" Whiz Lock Nuts | |

* NOTE: Some components may be pre-assembled by the manufacturer.

WARNING: Before beginning any service work turn off the PTO, set the parking brake, turn off the ignition, and disconnect the spark plug wire(s).

Catcher Bracket Installation

1. Remove the top right hex bolt (A, Figure 1) from the rear panel of the rider.
2. Attach the catcher bracket assembly (B) to the rear panel of the rider. Use the bolt removed in Step 1 to secure the top right hole. Secure the other three holes with three 5/16 x 3/4 hex bolts (C) and 5/16" flange nuts (D). Tighten securely.

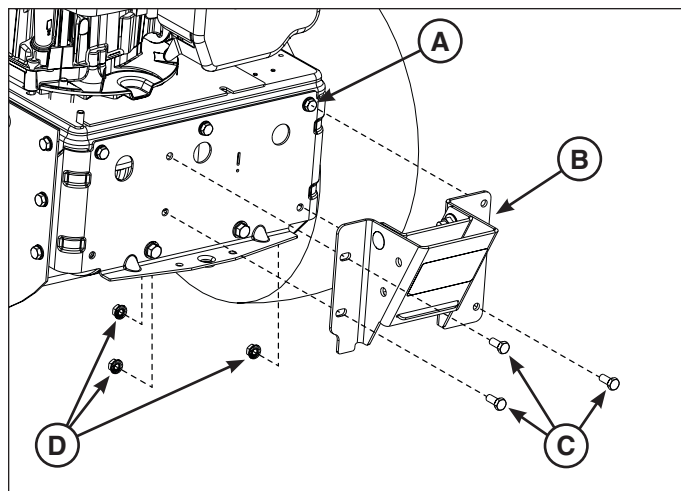


Figure 1

Catcher Frame Assembly

1. Install the upright support (A, Figure 2) into the catcher bracket as shown, securing with two 5-5/16" clevis pins (B) and 1-5/8" hair pins (C).

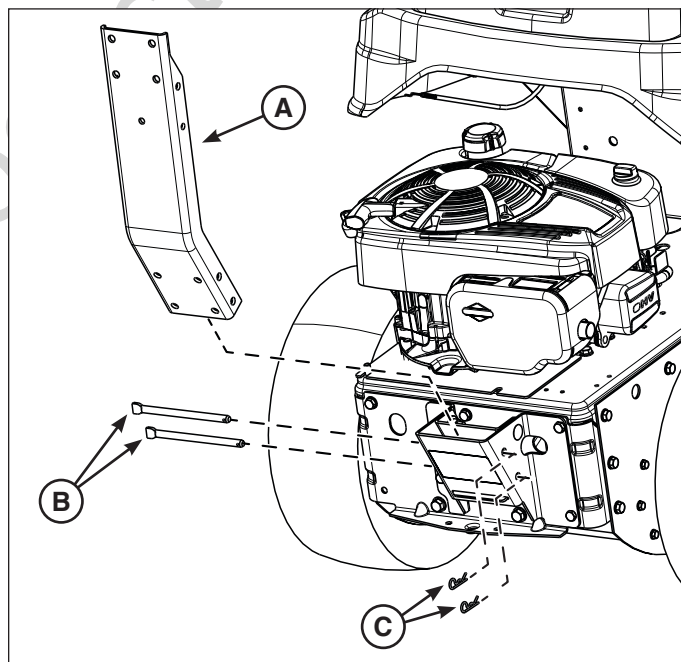


Figure 2

Assembly

2. Attach the cross support (D, Figure 3) to the upright support with four 3/8 x 1" carriage bolts (E) and four 3/8" whiz lock nuts (F). Tighten securely.
3. Attach one hinge pivot (G) to each end to the cross support as shown with two 1/4 x 5/8" carriage bolts (H) and two 1/4" whiz lock nuts (I). Tighten securely.

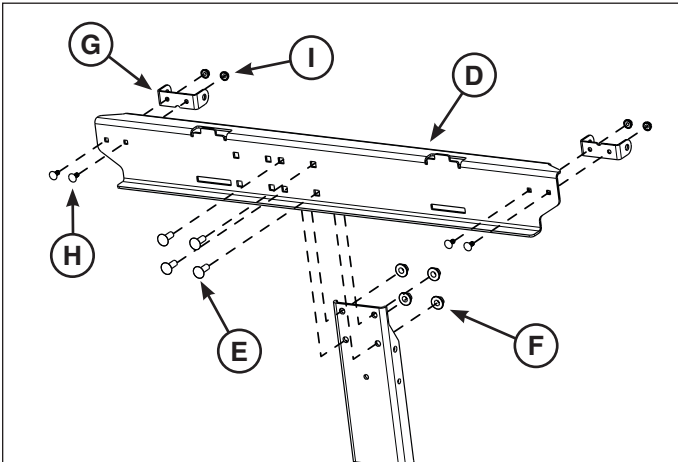


Figure 3

4. Attach the catcher cover assembly (J, Figure 4) to the hinge pivots (K), using one 3-3/4" clevis pin (L) and 1-7/8" hair pin (M) for each side of the cover.

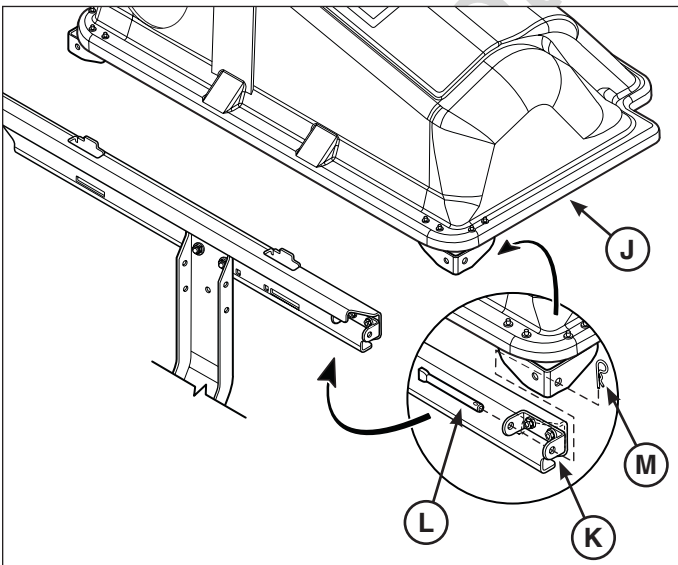


Figure 4

Grass Bag Installation

1. With the catcher cover raised, install the two grass bag assemblies (A, Figure 5) onto the catcher frame as shown. Be sure the slot (B) in the top of each grass bag hanger fits onto the tab (C) in the cross support, and the bottom of each grass bag hanger fits into the slot (D) in the cross support.
2. Lower the catcher cover.

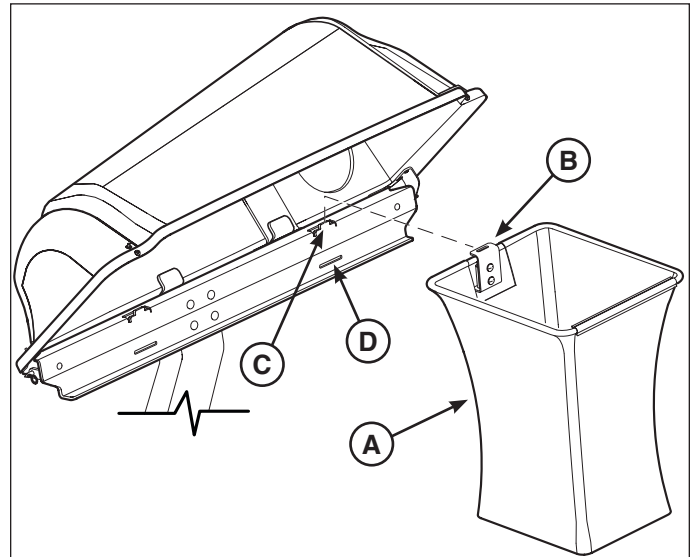


Figure 5

Catcher Tube / Catcher Boot Assembly

1. Install the two mounting straps (A, Figure 6) onto the upper catcher tube (B) and lower catcher tube (C) as shown, attaching each with a #10 machine screw (D) and 3/16" washer (E), and securing with a #10 weld nut (F). Tighten securely.

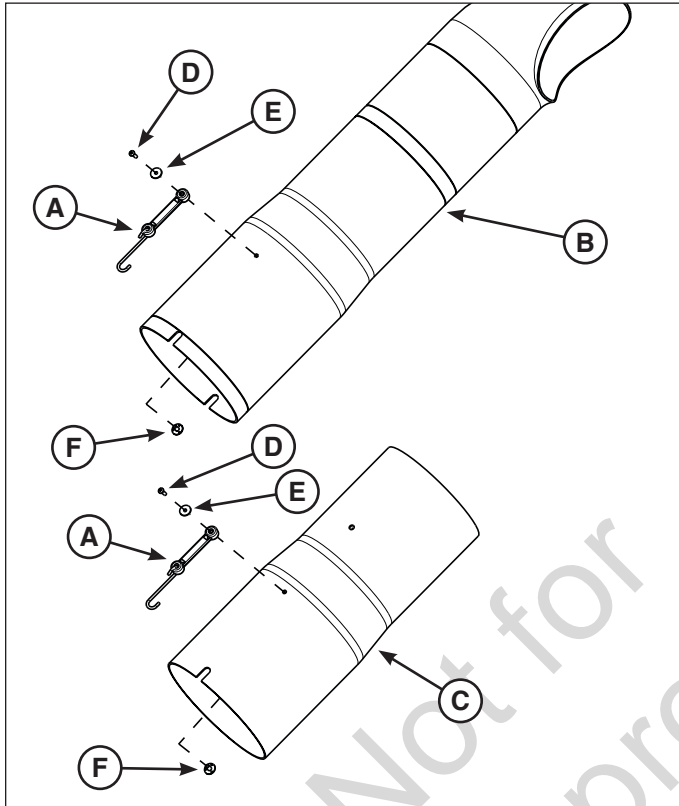


Figure 6

2. Install the two 5/16 x 5/8" machine screws (G, Figure 7) out through the noted holes in the lower catcher tube (C) and catcher boot (H), securing each with a 5/16" small OD flat washer (I) and tee-nut (J). Tighten securely.

NOTE: On catcher boots with two mounting holes, install the tee-nut to the innermost hole (hole closest to the rider) (K). Do not use the outermost hole (L).

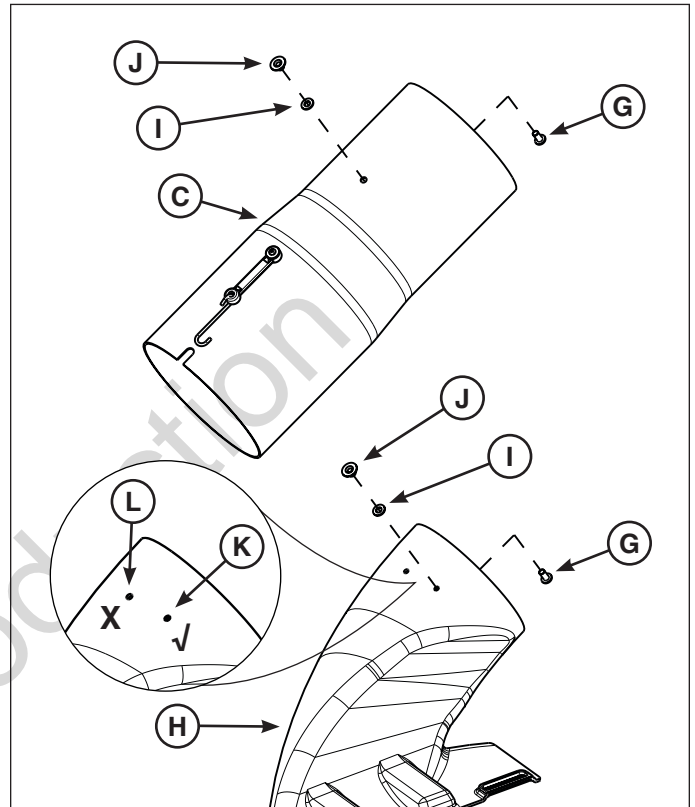


Figure 7

Assembly

Catcher Boot Installation

1. Raise the mulching cover. Refer to the Operator's Manual.
2. Install the 5/16 x 3/4" carriage bolt (A, Figure 8) out through the middle hole in the side of the deck, and secure with the 5/16" bolt retainer (B).

NOTE: Your rider may come with this hardware already installed.

3. Install the catcher boot (C) onto the mower deck, making sure the slots (D) in the boot fit securely onto the tabs on the mulching cover hinge (E).
4. Secure the bottom of the boot to the deck with a 5/16" large OD flat washer (F) and 5/16" wing nut (G).

NOTE: If provided, use the securing hardware that came with your rider.

5. Insert one 5/16 x 1" carriage bolt (H) out through the front hole in the deck and catcher boot, and secure with a 5/16" large OD flat washer and 5/16" wing nut. Tighten securely.
6. Lay the rear bracket (I, inset) against the rear of the catcher boot, and secure both to the deck with the remaining 5/16 x 1" carriage bolt, 5/16" large OD flat washer, and 5/16" wing nut. Tighten securely.

NOTE: There are two holes (J, inset) in the rear of the catcher boot and the rear bracket. Be sure to use the one that corresponds with your deck.

7. Lower the mulching cover.

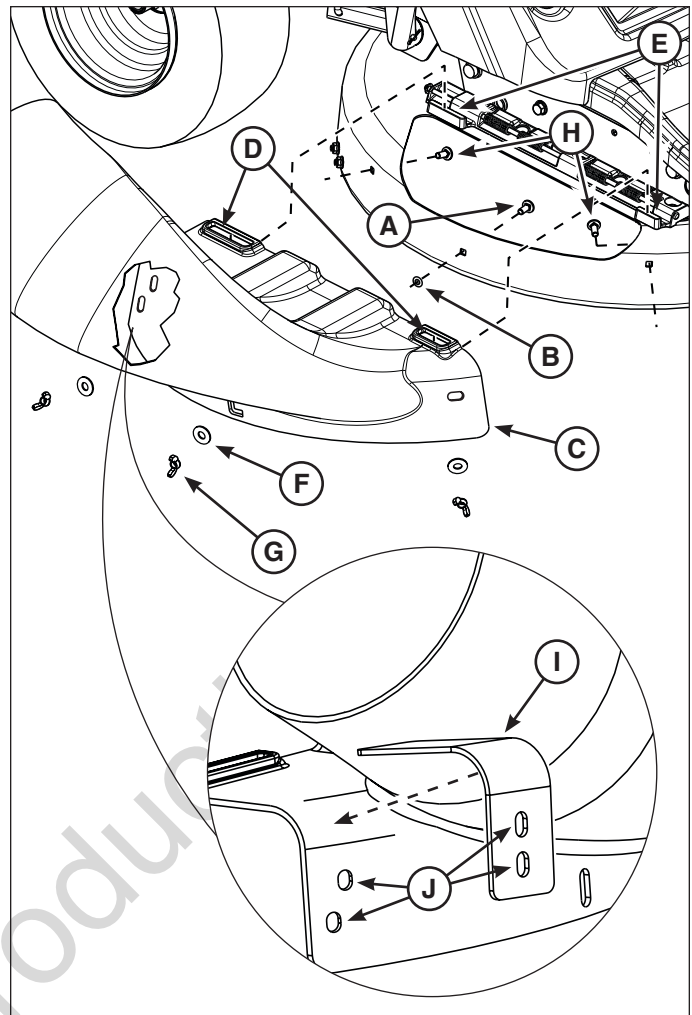


Figure 8 (Mulching cover not shown to provide clarity)

Catcher Tube Installation

1. Insert the upper tube (A, Figure 9) into the opening in the catcher cover (B) as shown, making sure the discharge is directed toward the left side of the unit.
2. Insert the lower tube (C, Figure 10) into the bottom of the upper tube as shown. Make sure the tee-nut (D) on the lower tube slips into the slot (E) in the upper tube. Secure by hooking the strap (F) on the upper tube onto the tee-nut on the lower tube.
3. Slip the lower tube (C, Figure 11) onto the catcher boot (G), making sure the slot (H) in the lower tube slips over the tee-nut (I) on the catcher boot. Secure by hooking the strap (J) on the lower tube onto the tee-nut on the catcher boot.

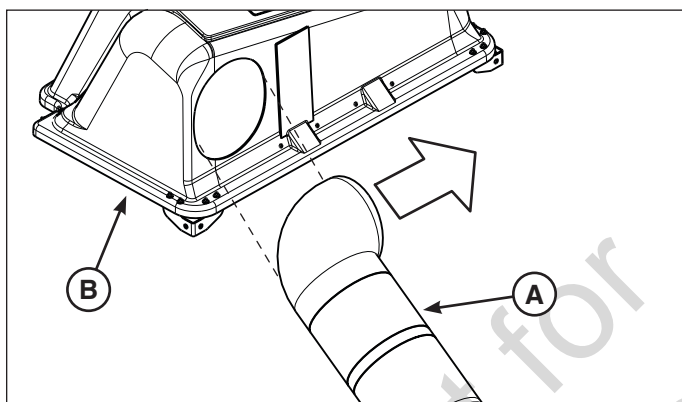


Figure 9 (Rider and components removed for clarity)

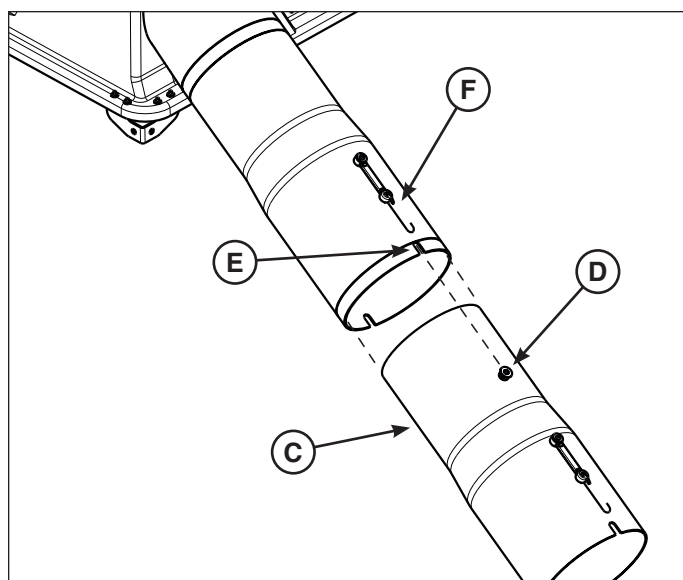


Figure 10

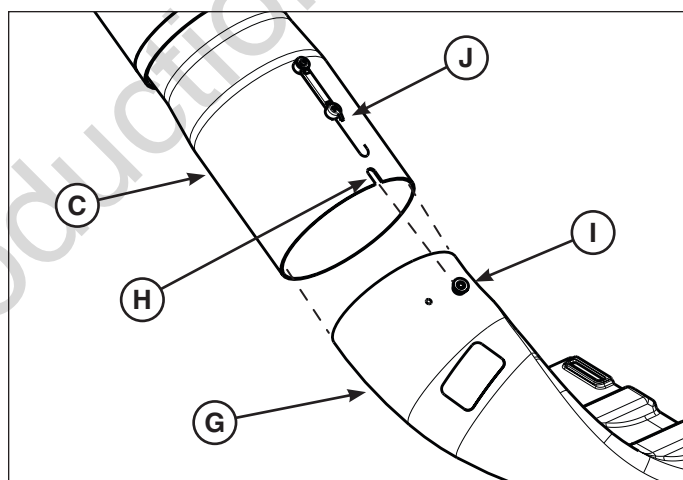


Figure 11

Operation

Before Operation

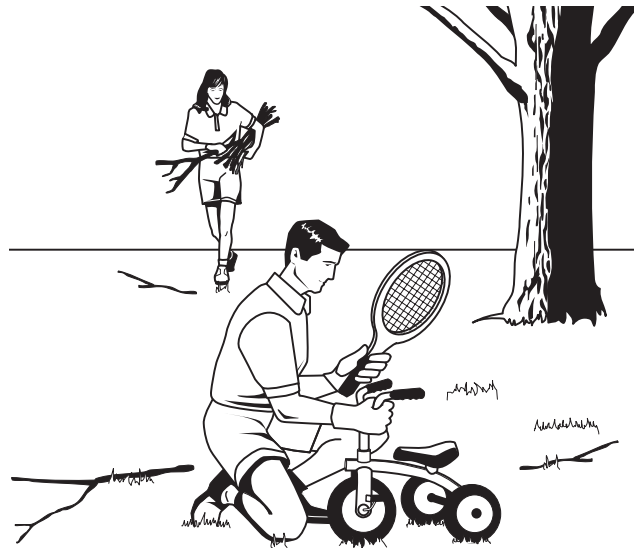
Clear the lawn of all sticks, stones, wire and other debris which may be caught or thrown by the mower blades.

Check grass condition. If wet, wait until later in the day. If grass is wet, the grass catcher is likely to become plugged.

For efficient bagging, air circulation under the mower deck, through the chute and into the bag is very important.

For this reason, **BEFORE YOU BEGIN MOWING** you should make certain the underside of the mower and the underside of the catcher cover are free from grass and debris.

Make sure that there is a snug fit between mower deck, catcher boot, tubes, and grass catcher cover.



CAUTION: Before you begin operating the unit be certain you have read all of the safety and operational information of this instruction sheet, as well as the Operator's Manual for the rider and any other attachments.

NOTE: Never operate on slopes greater than 17.6% (10°).

Mowing with the Catcher

Always operate with throttle at full speed when mowing.

Grass should be cut often, and not too short. If grass is too long or lush it may be necessary to keep ground speed to a minimum or to cut only half the width of the mower to prevent clogging. If grass is long, operate with mower in high cutting position for first pass, cutting again in a lower position on a second pass.

Do not open the cover with mower engaged.

If a large amount of cut grass is spilling out from under deck, the tubes may be plugged or the bags may be full — discontinue mowing, stop the unit, disengage the blade, shut off the engine and then empty the catcher or clear the tubes.

WARNING: ALWAYS shut off the rider, disengage the blade, and allow all moving parts to stop **BEFORE** disconnecting or clearing tubes, or emptying catcher.

Before leaving the operator's position for any reason, engage the parking brake, disengage the blade, stop the engine and remove the key.

To reduce fire hazard, keep the engine, rider and mower free of grass, leaves and excess grease. Do not stop or park rider over dry leaves, grass or combustible materials.

After Operation

Remove any debris from the screen on the underside of the catcher cover.

The catcher boot and tubes should be removed for cleaning.

Inspect the grass bags for wear or damage. Make sure that there is a snug fit between mower deck, catcher boot, tubes, and grass catcher cover.

CAUTION: Do not leave grass in bagger containers. Empty containers after each use and before storing. Failure to do so may result in spontaneous combustion which could develop into a fire.

BRIGGS & STRATTON PRODUCTS WARRANTY POLICY

April 2012

LIMITED WARRANTY

Briggs & Stratton warrants that, during the warranty period specified below, it will repair or replace, free of charge, any part that is defective in material or workmanship or both. Transportation charges on product submitted for repair or replacement under this warranty must be borne by purchaser. This warranty is effective for and is subject to the time periods and conditions stated below. For warranty service, find the nearest Authorized Service Dealer in our dealer locator map at www.BriggsandStratton.com. The purchaser must contact the Authorized Service Dealer, and then make the product available to the Authorized Service Dealer for inspection and testing.

There is no other express warranty. Implied warranties, including those of merchantability and fitness for a particular purpose, are limited to one year from purchase, or to the extent permitted by law. All other implied warranties are excluded. Liability for incidental or consequential damages are excluded to the extent exclusion is permitted by law. Some states or countries do not allow limitations on how long an implied warranty lasts, and some states or countries do not allow the exclusion or limitation of incidental or consequential damages, so the above limitation and exclusion may not apply to you. This warranty gives you specific legal rights and you may also have other rights which vary from state to state or country to country.**

WARRANTY PERIOD

Item	Consumer Use	Commercial Use
Equipment	1 year	0

** In Australia - Our goods come with guarantees that cannot be excluded under the Australian Consumer Law. You are entitled to a replacement or refund for a major failure and for compensation for any other reasonably foreseeable loss or damage. You are also entitled to have the goods repaired or replaced if the goods fail to be of acceptable quality and the failure does not amount to a major failure. For warranty service, find the nearest Authorized Service Dealer in our dealer locator map at BRIGGSandSTRATTON.COM, or by calling 1300 274 447, or by emailing or writing to salesenquires@briggsandstratton.com.au, Briggs & Stratton Australia Pty Ltd, 1 Moorebank Avenue, NSW, Australia, 2170.

The warranty period begins on the date of purchase by the first retail consumer or commercial end user, and continues for the period of time stated in the table above. "Consumer use" means personal residential household use by a retail consumer. "Commercial use" means all other uses, including use for commercial, income producing or rental purposes. Once a product has experienced commercial use, it shall thereafter be considered as a commercial use product for purposes of this warranty.

No warranty registration is necessary to obtain warranty on Briggs & Stratton products. Save your proof of purchase receipt. If you do not provide proof of the initial purchase date at the time warranty service is requested, the manufacturing date of the product will be used to determine the warranty period.

ABOUT YOUR WARRANTY

We welcome warranty repair and apologize to you for being inconvenienced. Warranty service is available only through Briggs & Stratton Authorized Service Dealers. Most warranty repairs are handled routinely, but sometimes requests for warranty service may not be appropriate. This warranty only covers defects in materials or workmanship. It does not cover damage caused by improper use or abuse, improper maintenance or repair, or normal wear and tear.

Improper Use and Abuse - The proper, intended use of this product is described in the Operator's Manual. Using the product in a way not described in the Operator's Manual or using the product after it has been damaged will void your warranty. Warranty is not allowed if the serial number on the product has been removed or the product has been altered or modified in any way, or if the product has evidence of abuse such as impact damage, or water/chemical corrosion damage.

Improper Maintenance or Repair - This product must be maintained according to the procedures and schedules provided in the Operator's Manual, and serviced or repaired using genuine Briggs & Stratton parts or equivalent. Damage caused by lack of maintenance or use of non-original parts is not covered by warranty.

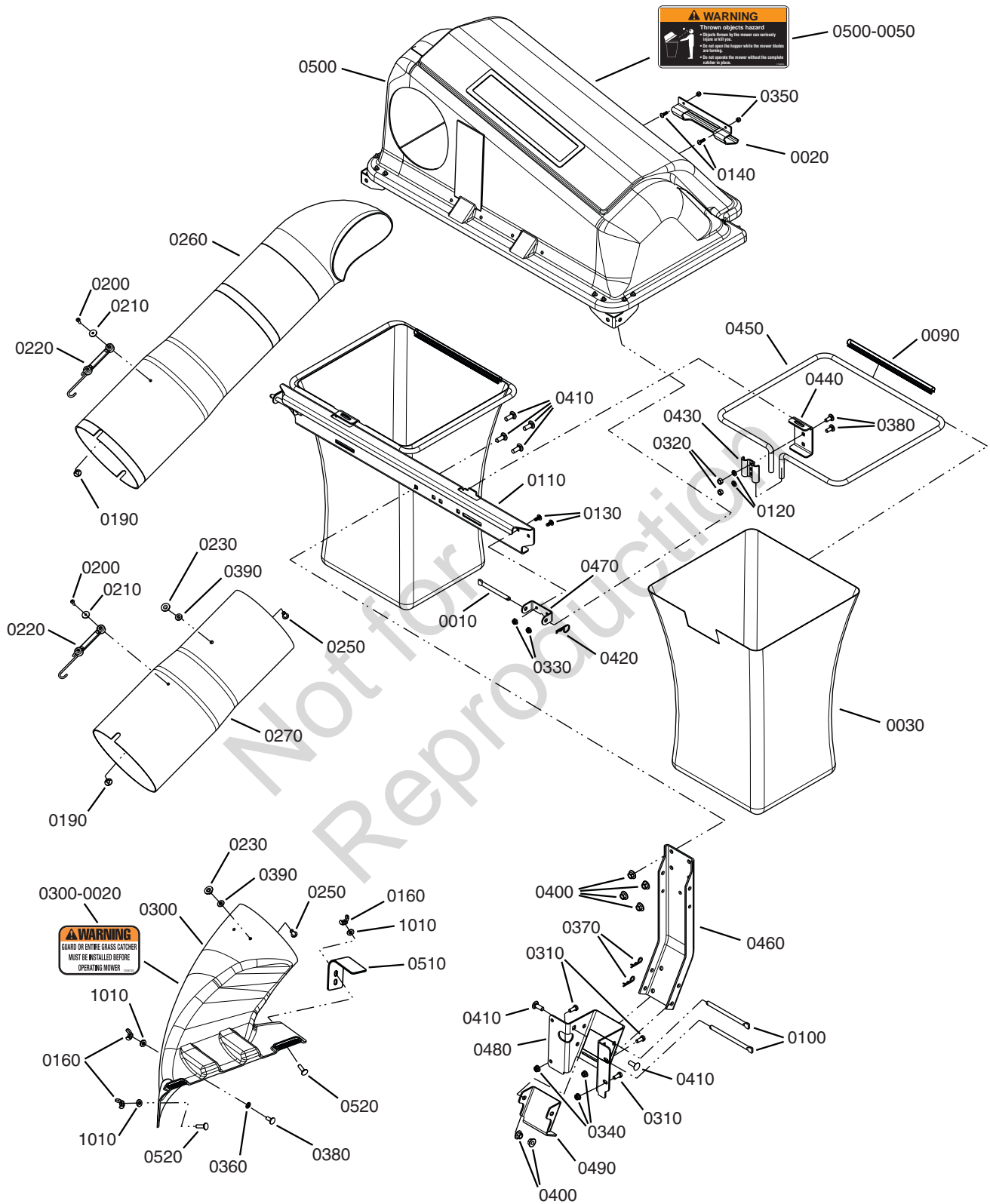
Normal Wear - Like all mechanical devices, your unit is subject to wear even when properly maintained. This warranty does not cover repairs when normal use has exhausted the life of a part or the equipment. Maintenance and wear items such as filters, belts, cutting blades, and brake pads (except engine brake pads) are not covered by warranty due to wear characteristics alone, unless the cause is due to defects in material or workmanship.

Other Exclusions - This warranty excludes damage due to accident, abuse, modifications, alterations, improper servicing, freezing or chemical deterioration. Attachments or accessories that were not originally packaged with the product are also excluded. This warranty also excludes failures due to acts of God and other force majeure events beyond the manufacturer's control.

Not for
Reproduction

Not for
Reproduction

Parts List



Parts List

Item	Number	Object Description	Quantity
0010	0054407ZMA	Pin - Clevis 3/8 x 3-3/4	2
0020	0054537MA	Handle, Plastic	1
0030	1703764SM	Bag-Grass 15.4 x 16 x 22.5 White Poly Cloth	2
0090	1733709SM	Edging-12.00 Lg Pvc Tube White Triple Ca	2
0100	1734229SM	Pin - Clevis 3/8 x 5-5/16	2
0110	1736026YP	Cross Support -10Ga Twin Catcher	1
0120	1917356SM	Lockwasher - Spring, 5/16 Blk	4
0130	1960252SM	Bolt, Carriage, 1/4-20 x 5/8 G5 Blk	4
0140	1960404SM	Screw - Truss Hd Phillips, #10-24 x 3/4	2
0160	7024085YP	Wing Nut, 5/16C W/ Nylon Ring ZP	3
0190	7036404SM	Weld Nut, #10C YZ	2
0200	7036415SM	Pan Head Machine Screw, #10C x 5/8 GR5 YZ	2
0210	7036422SM	Flat Washer, 3/16 YZ	2
0220	7036433SM	Strap, Mounting	2
0230	7036543SM	Tee-Nut, 5/16C YZ	2
0250	7091833SM	Pan Head Machine Screw, 5/16C x 5/8 GR5 YZ	2
0260	7100618SM	Tube, Upper	1
0270	7100701SM	Tube, Lower	1
0300	7503112YP	Assy, Catcher Boot	1
0300-0020	7046720SM	Decal, Warning - Chute/Deflector (on catcher boot)	1
0310	1921332SM	Hex Bolt, 5/16-18 x 3/4, GR5	3
0320	703465	Nut, 5/16-18, GR5	4
0330	7091584SM	Nut, Whiz Lock 1/4-20	4
0340	7091601SM	Nut, Flange, 5/16-18, GR5	3
0350	703412	Nut, #10-24, Nylock, GR2	2
0360	703297	Bolt Retainer, 5/16	1
0370	703300	Pin, Hair, 3/32 x 1-5/8	2
0380	703185	Bolt, Carriage, 5/16-18 x 3/4	5
0390	703350	Washer, Flat, 5/16 (Small OD)	2
0400	703793	Nut, Whiz Lock 3/8-16	6
0410	703815	Bolt, Carriage 3/8-16 x 1	6
0420	703796	Pin, Hair, 3/32 x 1-7/8	2
0430	1672023ASM	Grass Bag Hanger Clamp	2
0440	1703807BMYP	Grass Bag Hanger	2
0450	1733491AYP	Grass Bag Hoop	2
0460	1734223ASM	Upright Support	1
0470	1736886BMYP	Hinge Pivot	2
0480	7301294BMYP	Catcher Bracket	1
0490	7301377BMYP	Catcher Bracket Support	1
0500	7106054YP	Catcher Cover Assembly	1
0500-0050	1732819SM	Decal, Warning - Thrown Objects (on catcher cover)	1
0510	7301385BMYP	Bracket, Rear	1
0520	7091903YP	Bolt, Carriage, 5/16-18 x 1	2
1010	703298	Washer, Flat, 5/16 (Large OD)	3

Not for
Reproduction

Copyright © 2013 Briggs & Stratton Power Products Group, LLC.
Milwaukee, WI, USA. All rights reserved.

BRIGGS & STRATTON POWER PRODUCTS is a registered
trademark of Briggs & Stratton Corporation.